

Attachment B-1

Project Plans & Renderings

Susanville Courthouse

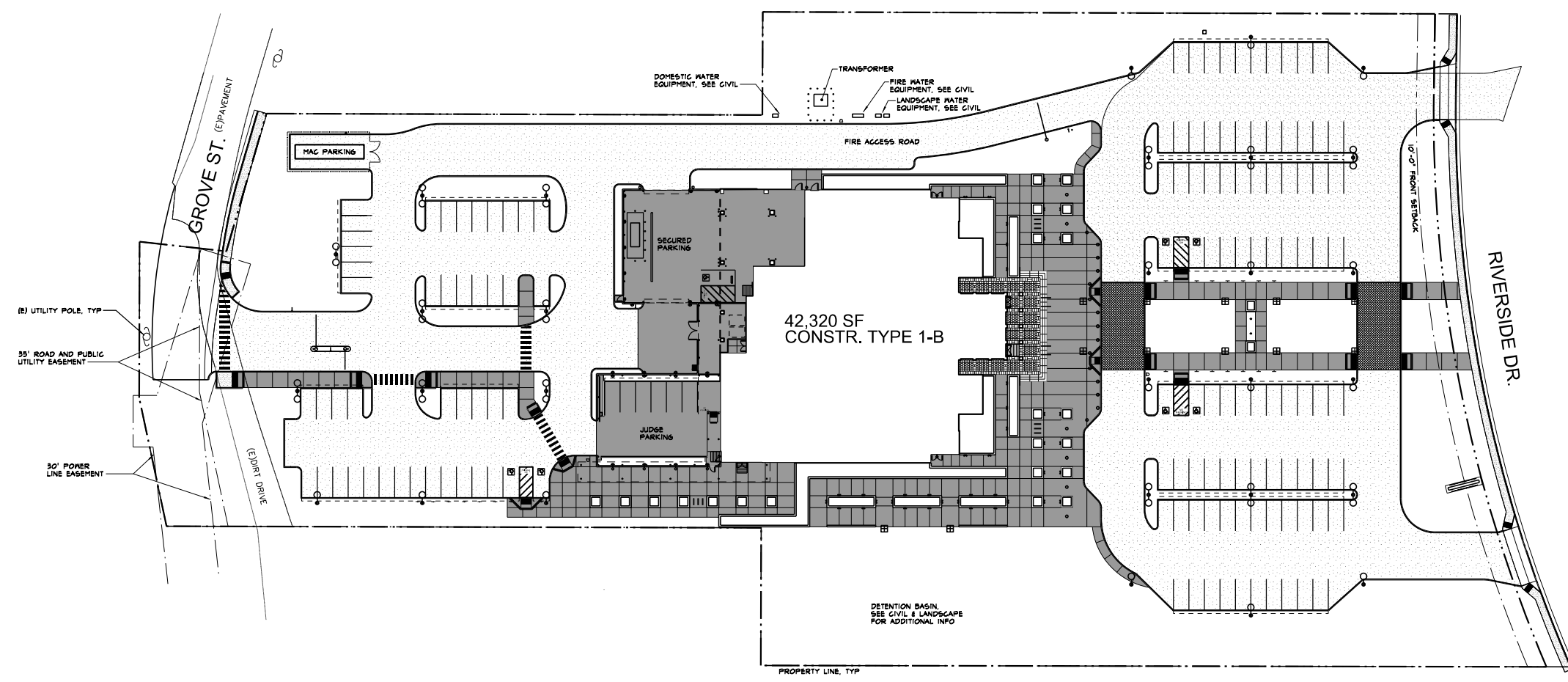
Superior Court of California, County of Lassen



ADMINISTRATIVE OFFICE
OF THE COURTS

OFFICE OF COURT CONSTRUCTION
AND MANAGEMENT

2/20/2010 2:28:41 PM ...2778 A1.1 Site Plan.dgn



PAVING LEGEND

- AG PAVING
- CONCRETE PAVING - SALTED FINISH
- ▨ CONCRETE SIDEWALKS (PER CITY STANDARDS)
- ▩ INTERLOCKING CONCRETE PAVERS
- ▧ CONCRETE PAVERS

SEAL
FOR REVIEW ONLY - NOT FOR CONSTRUCTION

ISSUED
100% CONSTRUCTION DOCUMENTS 12/21/2009

AGENCY APPROVALS

PROJECT NO. 21761

**NEW COURTHOUSE
SUPERIOR COURT
OF CALIFORNIA
LASSEN COUNTY**

2610 RIVERSIDE DRIVE
SUSANVILLE, CA 96130

KEY PLAN

1 SITE PLAN
1"=30'-0"



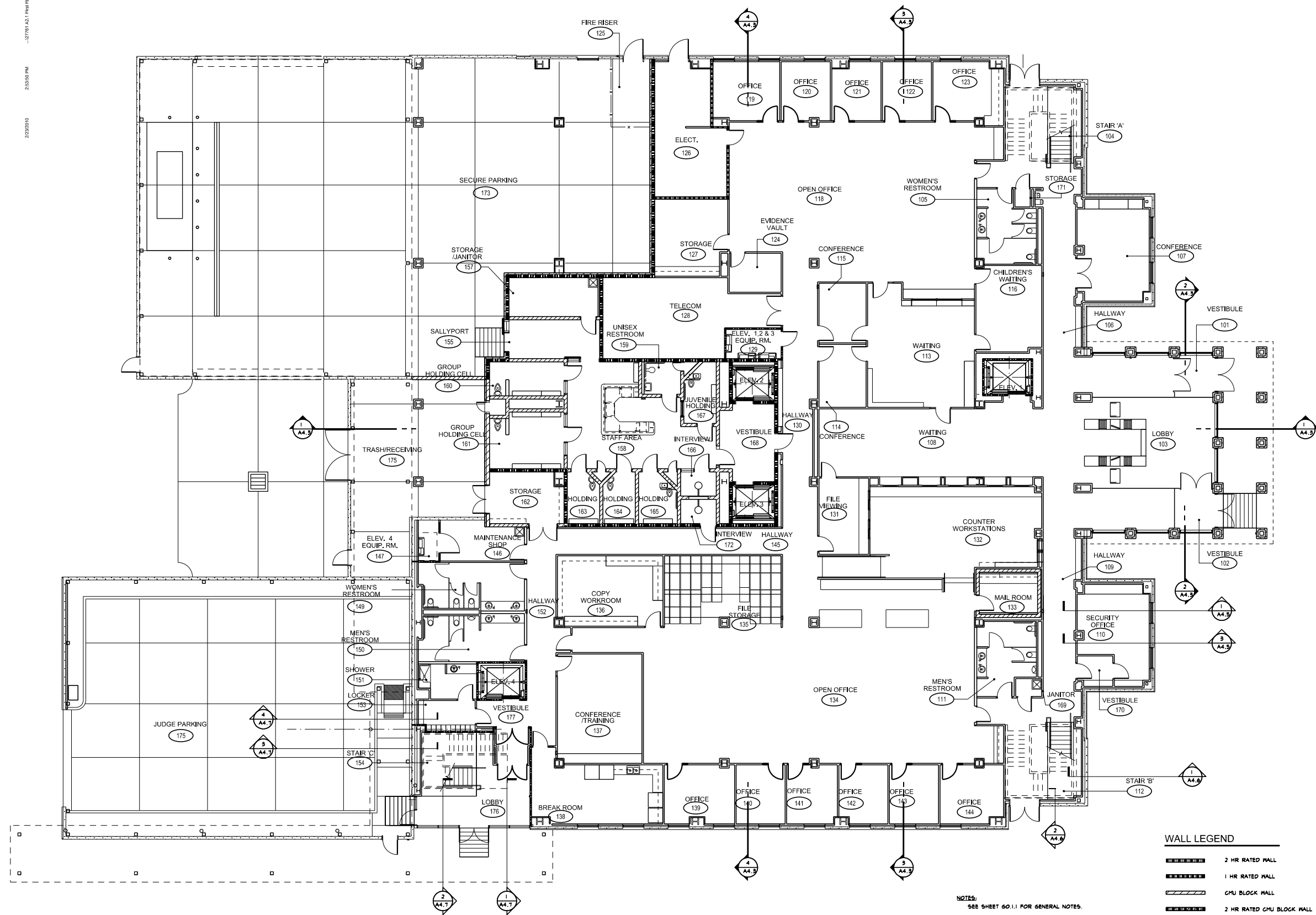
SHEET TITLE

SITE PLAN

SHEET NO.

A1.1

2/20/2010 2:33:50 PM ...07781 A2.1 First Floor Plan.dgn



SEAL
FOR REVIEW ONLY - NOT FOR CONSTRUCTION
FOR REVIEW ONLY - NOT FOR CONSTRUCTION

ISSUED
100% CONSTRUCTION DOCUMENTS 12/21/2009

AGENCY APPROVALS

PROJECT NO. 21761

**NEW COURTHOUSE
SUPERIOR COURT
OF CALIFORNIA
LASSEN COUNTY**

2610 RIVERSIDE DRIVE
SUSANVILLE, CA 96130

KEY PLAN

1 FIRST FLOOR PLAN
1/8"=1'-0"

NOTES:
SEE SHEET 60.1.1 FOR GENERAL NOTES.
STANDARD FIRST FLOOR INTERIOR MALL TYPE IS 2, UNO.
STANDARD FURRING MALL TYPE IS 8, UNO.
REFER TO 52.1 FOR ADDITIONAL SLAB JOINTS.
REFER TO CIVIL DRAWINGS FOR SLAB SLOPES
AND STORM DRAINS.

WALL LEGEND

	2 HR RATED WALL
	1 HR RATED WALL
	CMU BLOCK WALL
	2 HR RATED CMU BLOCK WALL
	INSULATED CMU BLOCK WALL
	2 HR RATED INSULATED CMU
	METAL STUD WALL
	PRE-CAST MASONRY EXTERIOR
	STEEL SECURITY WALL SYSTEM

- KEY NOTES**
- (1) TYPICAL HANDRAIL
 - (2) CASEWORK
 - (3) LOCKERS
 - (4) HIGH DENSITY STORAGE SYSTEM

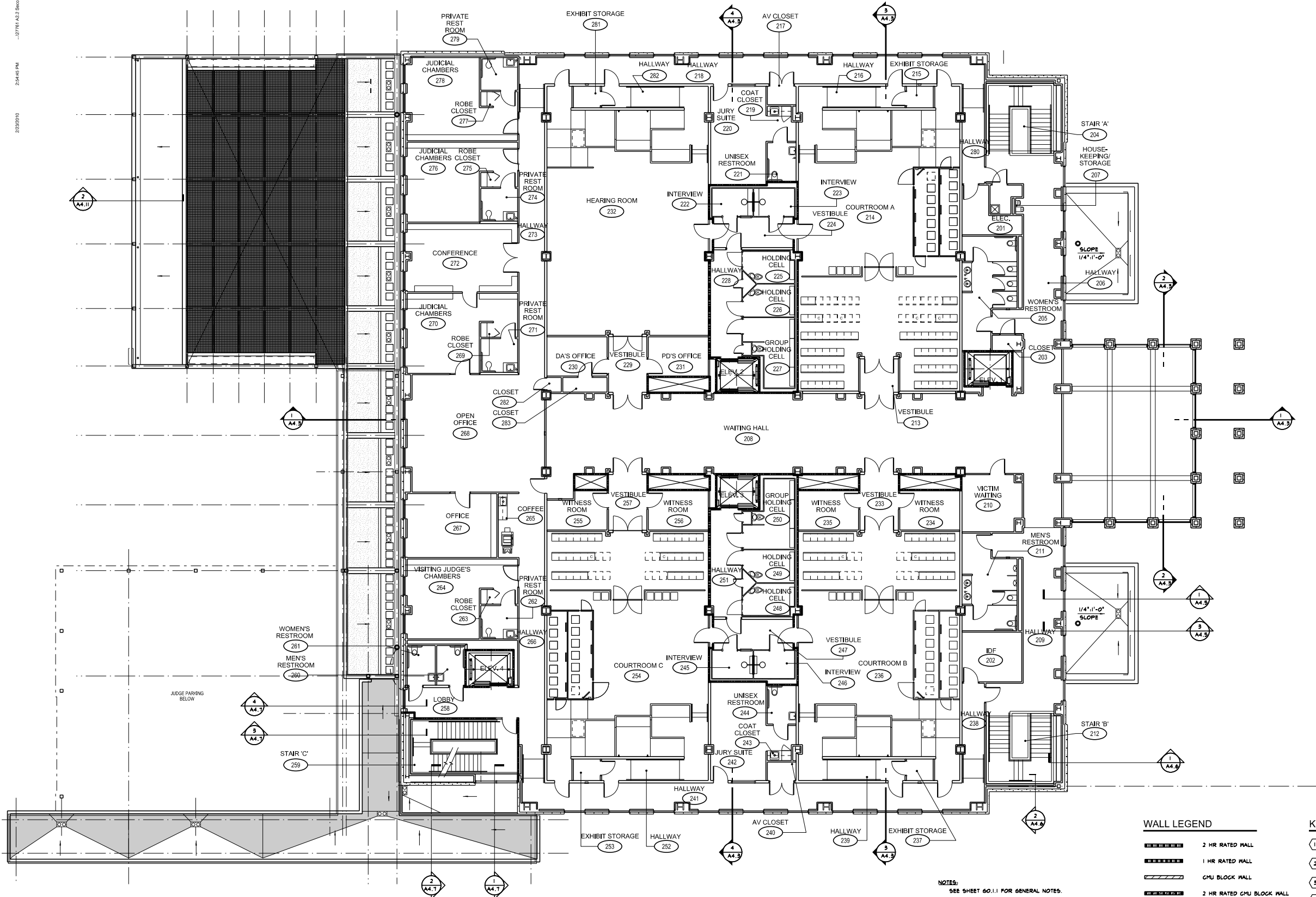
SHEET TITLE

FIRST FLOOR PLAN

SHEET NO.

A2.1

2/23/2010 2:54:46 PM ...07781 A2.2 Second Floor Plan.dgn



SEAL
FOR REVIEW ONLY - NOT FOR CONSTRUCTION
FOR REVIEW ONLY - NOT FOR CONSTRUCTION

ISSUED
100% CONSTRUCTION DOCUMENTS 12/21/2009

AGENCY APPROVALS

PROJECT NO. 21761

**NEW COURTHOUSE
SUPERIOR COURT
OF CALIFORNIA
LASSEN COUNTY**

2610 RIVERSIDE DRIVE
SUSANVILLE, CA 96130

KEY PLAN

1 SECOND FLOOR PLAN
1/8"=1'-0"

NOTES:
SEE SHEET 60.1.1 FOR GENERAL NOTES.
STANDARD SECOND FLOOR INTERIOR WALL TYPE IS 3, UNO.
STANDARD FURRING WALL TYPE IS 6, UNO.
REFER TO S2.1 FOR ADDITIONAL SLAB JOINTS.
REFER TO CIVIL DRAWINGS FOR SLAB SLOPES
AND STORM DRAINS.

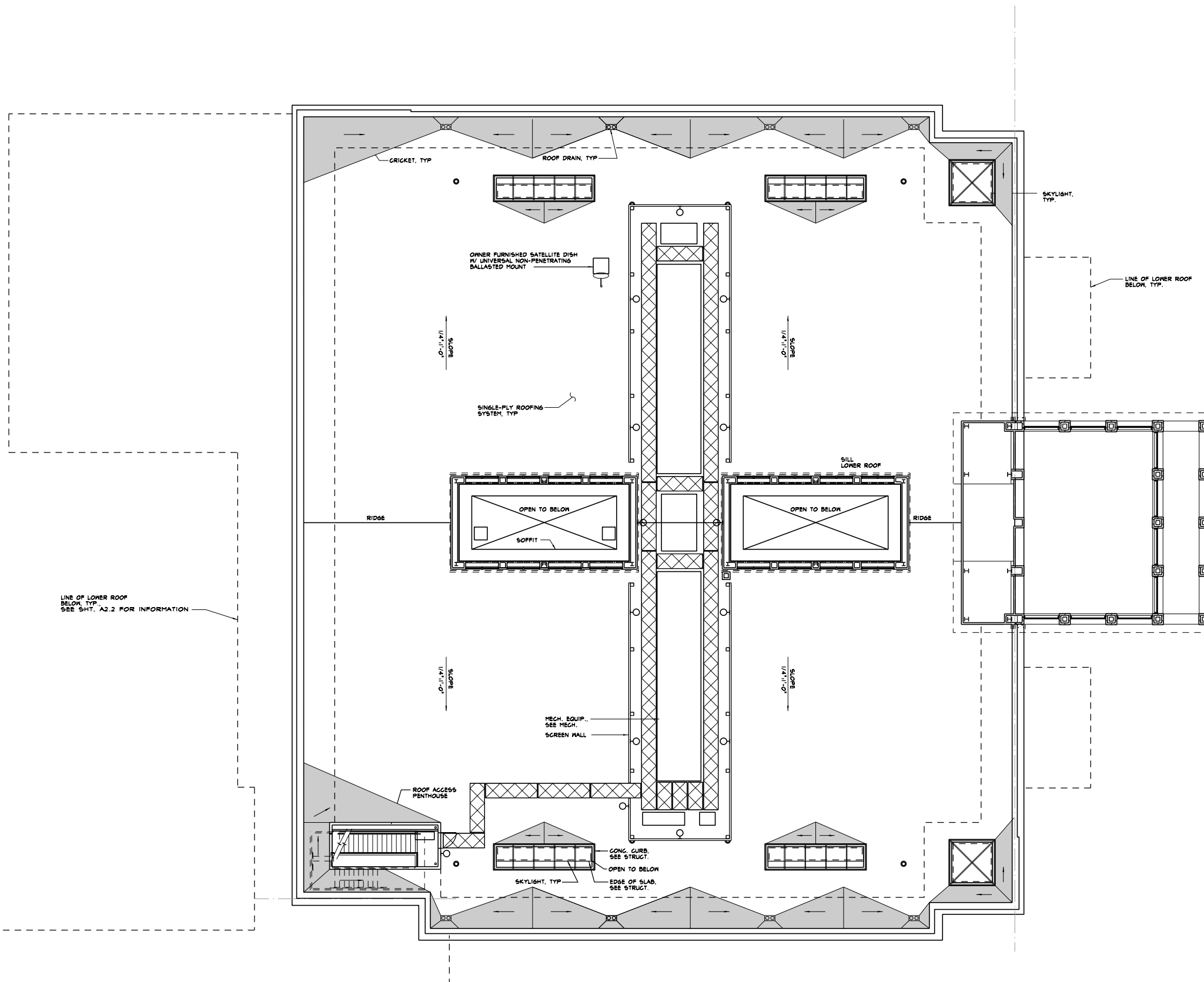
WALL LEGEND

	2 HR RATED WALL
	1 HR RATED WALL
	CMU BLOCK WALL
	2 HR RATED CMU BLOCK WALL
	INSULATED CMU BLOCK WALL
	2 HR RATED INSULATED CMU
	METAL STUD WALL
	PRE-CAST MASONRY EXTERIOR

- KEY NOTES**
- ① TYPICAL HANDRAIL
 - ② CASENOTE
 - ③ LOCKERS
 - ④ HIGH DENSITY STORAGE SYSTEM

SHEET TITLE
SECOND FLOOR PLAN
SHEET NO.
A2.2

2/23/2010 2:58:34 PM ...07781 A2.3 Roof Plan.dgn



SEAL
FOR REVIEW ONLY - NOT FOR CONSTRUCTION
ISSUED
100% CONSTRUCTION DOCUMENTS 12/21/2009
AGENCY APPROVALS

PROJECT NO. 21761

NEW COURTHOUSE
SUPERIOR COURT
OF CALIFORNIA
LASSEN COUNTY

2610 RIVERSIDE DRIVE
SUSANVILLE, CA 96130

KEY PLAN

SHEET TITLE

ROOF
PLAN

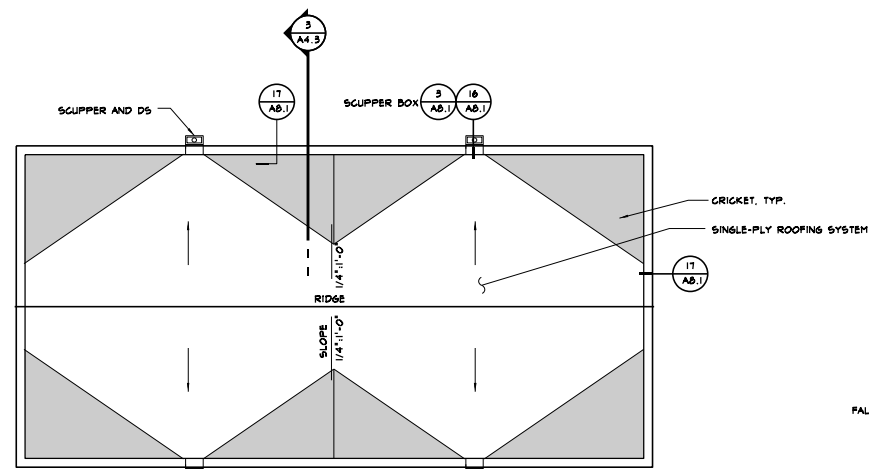
SHEET NO.

A2.3

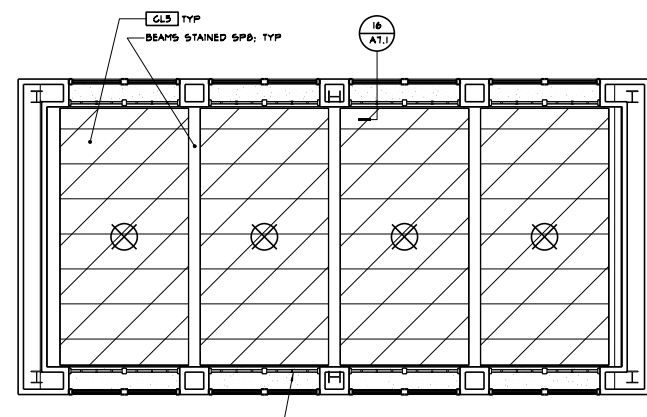
NOTES:
SEE SHEET 60.1.1 FOR GENERAL NOTES.

1 ROOF PLAN
1/8"=1'-0"

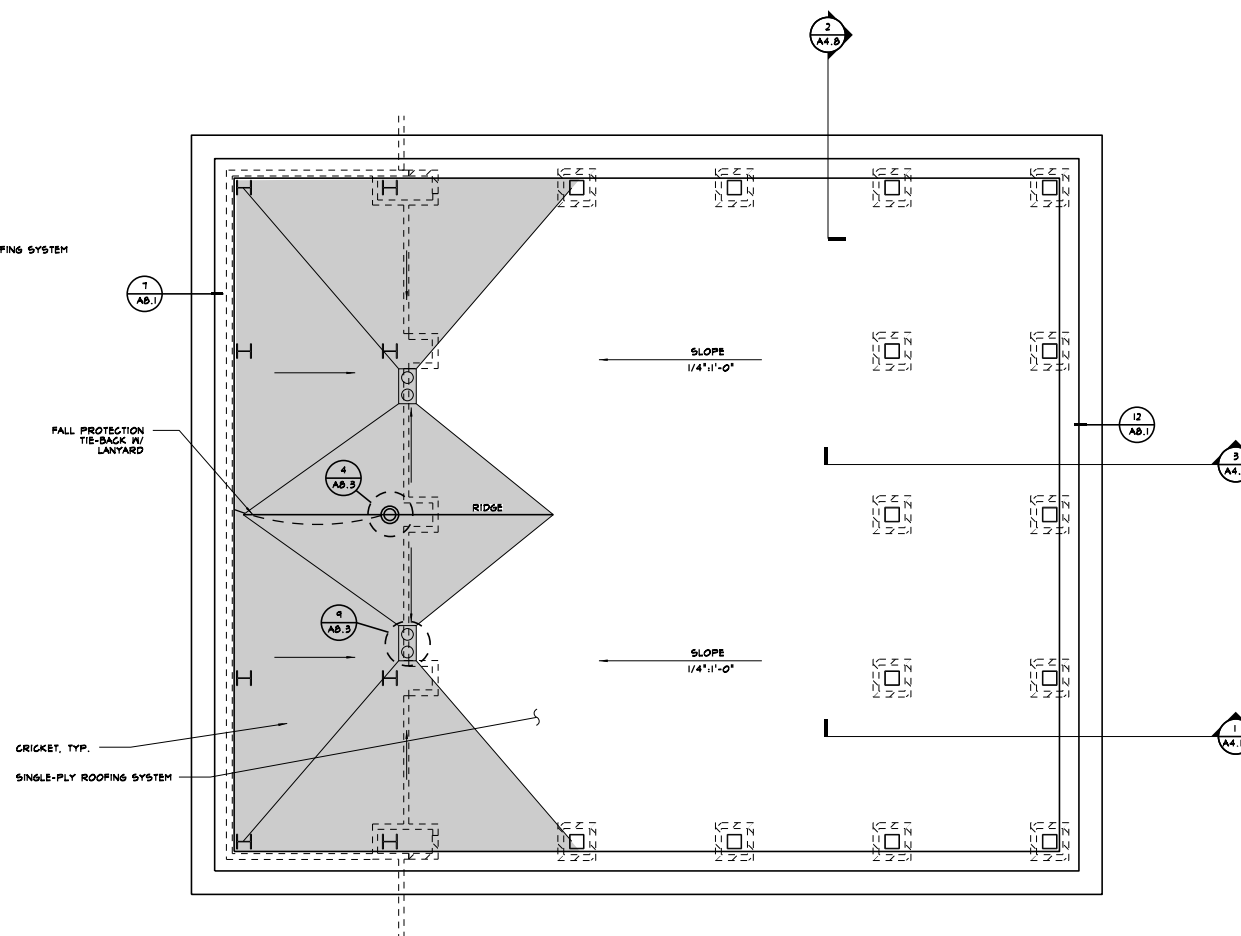
2/22/2010 2:28:53 PM ...S2751 A2.3.1 High Roof Plans & Clerestory RCP.dgn



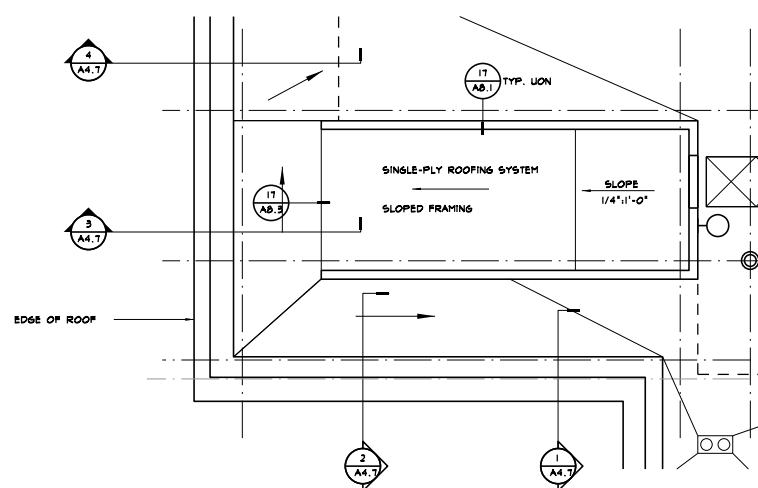
1 CLERESTORY ROOF PLAN
1/8"=1'-0"



2 CLERESTORY REFLECTED CEILING PLAN
1/8"=1'-0"



3 LOBBY ROOF PLAN
1/8"=1'-0"



4 STAFF STAIR ROOF PLAN
1/8"=1'-0"

SEAL
FOR REVIEW ONLY NOT FOR CONSTRUCTION
FOR REVIEW ONLY NOT FOR CONSTRUCTION

ISSUED

100% CONSTRUCTION DOCUMENTS 12/21/2009

AGENCY APPROVALS

PROJECT NO. 21761

NEW COURTHOUSE
SUPERIOR COURT
OF CALIFORNIA
LASSEN COUNTY

2610 RIVERSIDE DRIVE
SUSANVILLE, CA 96130

KEY PLAN

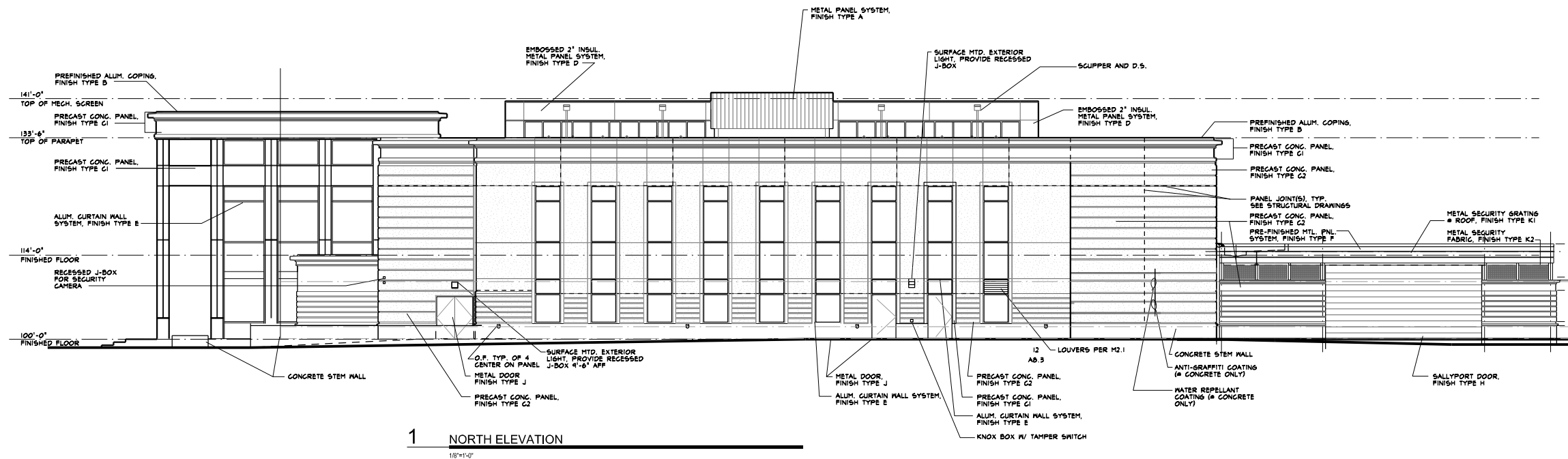
SHEET TITLE

HIGH ROOF PLANS
& CLERESTORY RCP

SHEET NO.

A2.3.1

2/23/2010 3:31:16 PM ...27781 A4.1 Exterior Elevations.dgn

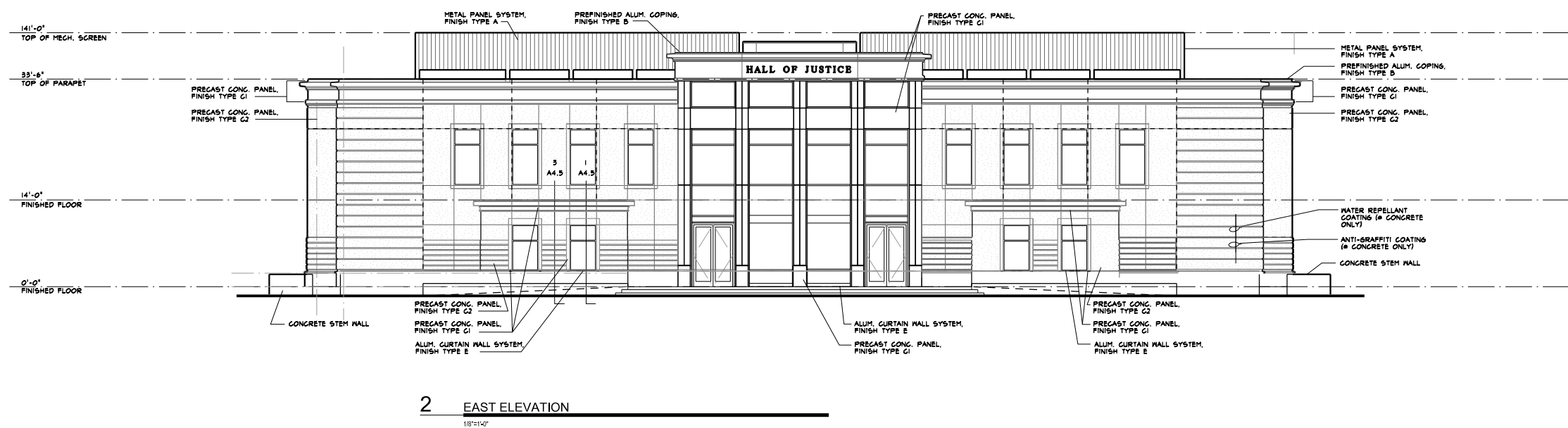


SEAL
FOR REVIEW ONLY - NOT FOR CONSTRUCTION
FOR REVIEW ONLY - NOT FOR CONSTRUCTION

ISSUED

100% CONSTRUCTION DOCUMENTS 12/21/2009

AGENCY APPROVALS



PROJECT NO. 21761

NEW COURTHOUSE
SUPERIOR COURT
OF CALIFORNIA
LASSEN COUNTY

2610 RIVERSIDE DRIVE
SUSANVILLE, CA 96130

KEY PLAN

SHEET TITLE

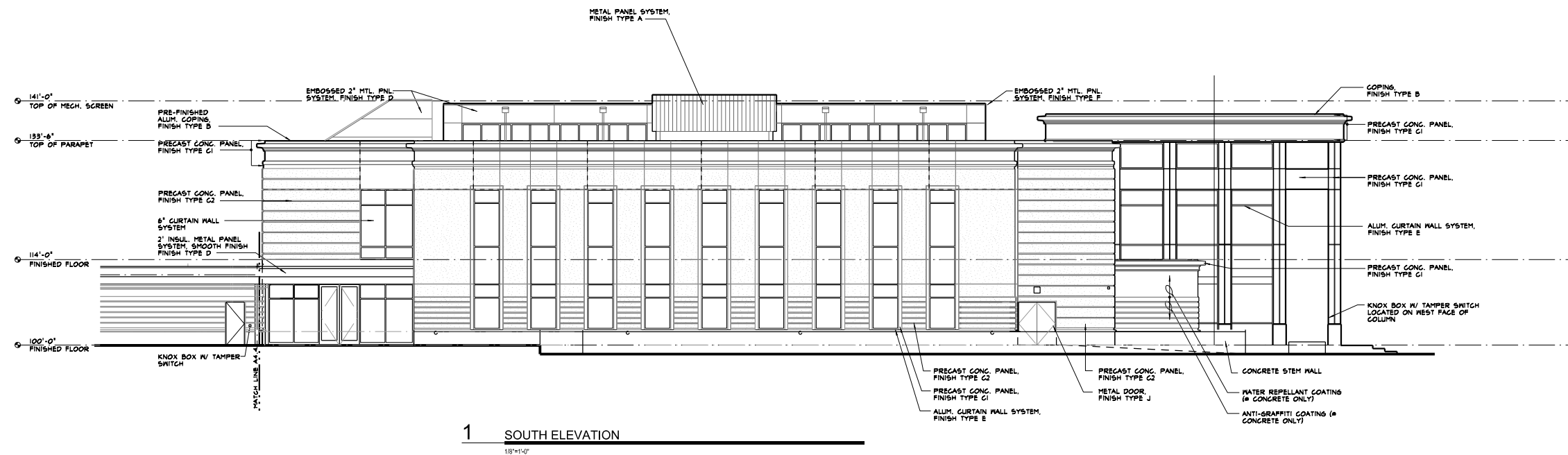
EXTERIOR
ELEVATIONS

SHEET NO.

A4.1

...2778 A4.2 Exterior Elevations.dgn

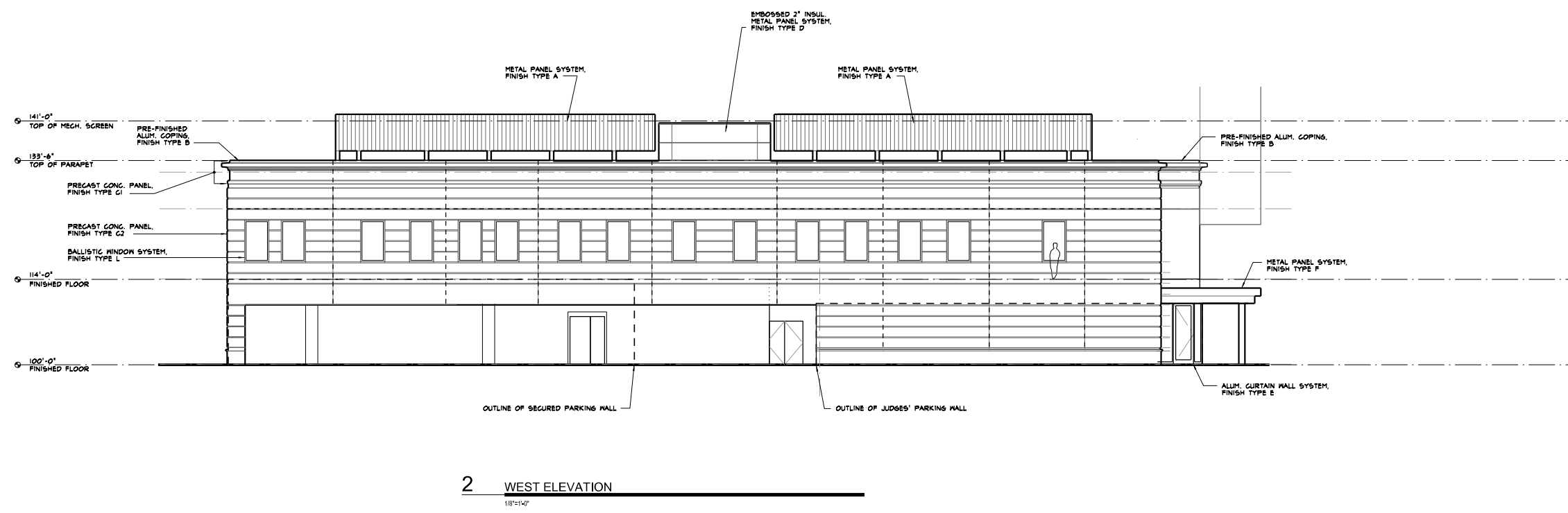
3/20/06 PM 2/20/07 10



SEAL
FOR REVIEW ONLY - NOT FOR CONSTRUCTION
FOR REVIEW ONLY - NOT FOR CONSTRUCTION

ISSUED
100% CONSTRUCTION DOCUMENTS 12/21/2009

AGENCY APPROVALS



PROJECT NO. 21761

NEW COURTHOUSE
SUPERIOR COURT
OF CALIFORNIA
LASSEN COUNTY

2610 RIVERSIDE DRIVE
SUSANVILLE, CA 96130

KEY PLAN

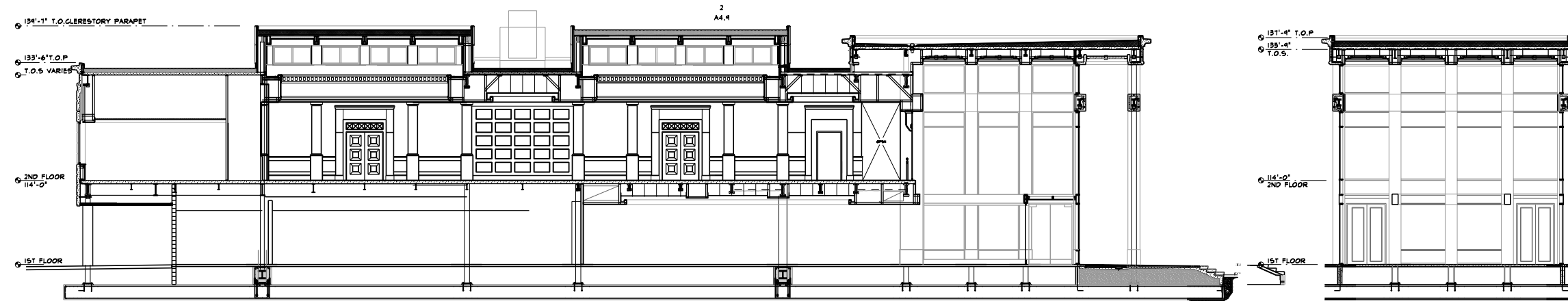
SHEET TITLE

EXTERIOR
ELEVATIONS

SHEET NO.

A4.2

2/2/2010 3:18:38 PM ...07781 A4.3 Building Sections.dgn



1 SECTION @ GRID E
1/8"=1'-0"

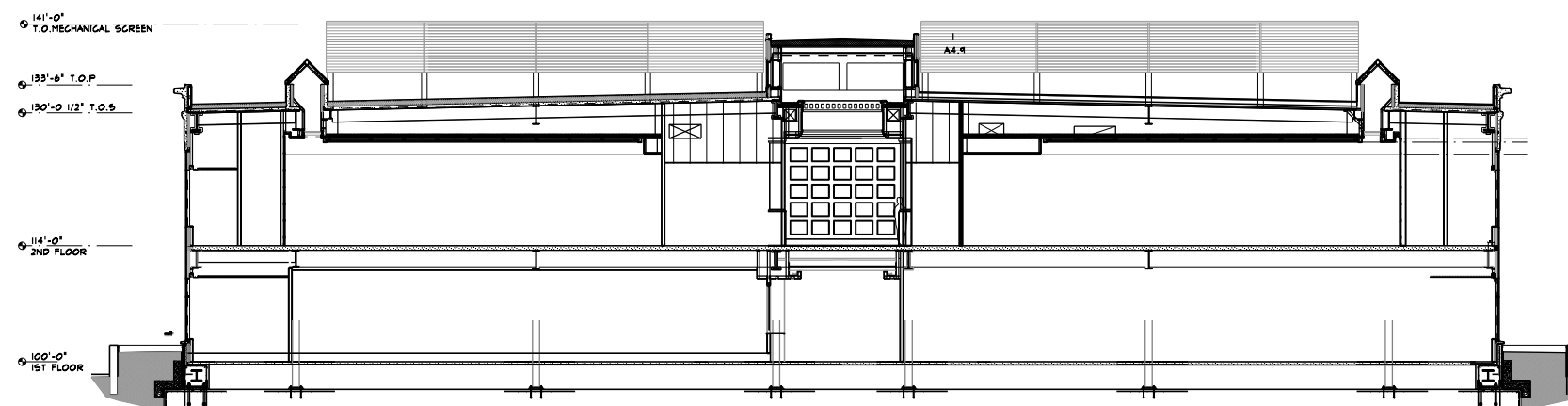
2 SECTION @ GRID 7
1/8"=1'-0"

SEAL
FOR REVIEW ONLY - NOT FOR CONSTRUCTION
FOR REVIEW ONLY - NOT FOR CONSTRUCTION

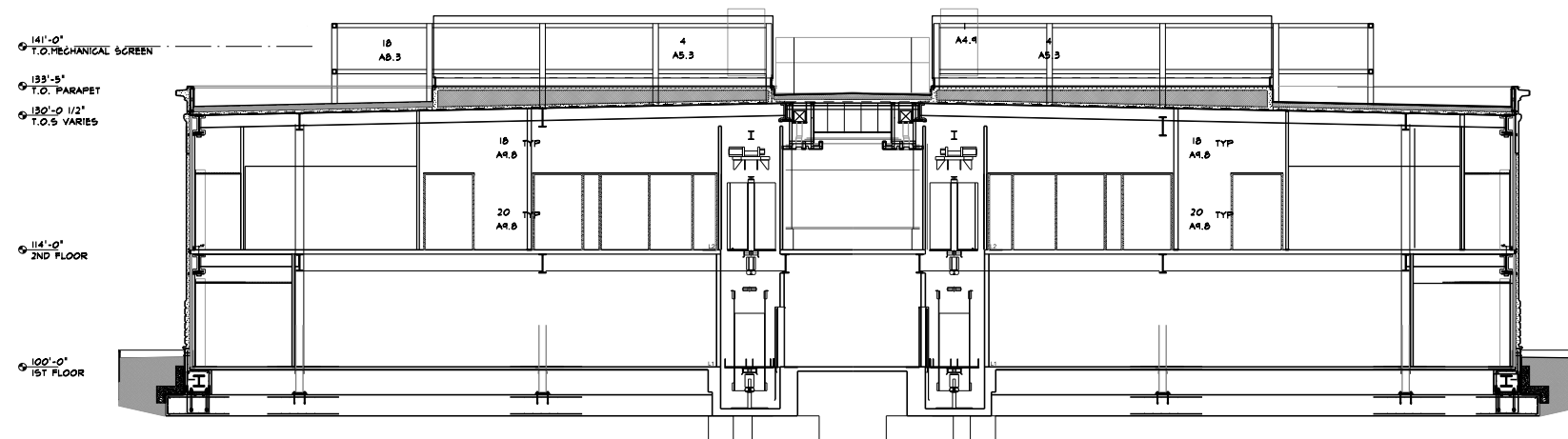
ISSUED

100% CONSTRUCTION DOCUMENTS 12/21/2009

AGENCY APPROVALS



3 SECTION @ GRID 4.5
1/8"=1'-0"



4 SECTION @ GRID 3.9
1/8"=1'-0"

PROJECT NO. 21761

NEW COURTHOUSE
SUPERIOR COURT
OF CALIFORNIA
LASSEN COUNTY

2610 RIVERSIDE DRIVE
SUSANVILLE, CA 96130

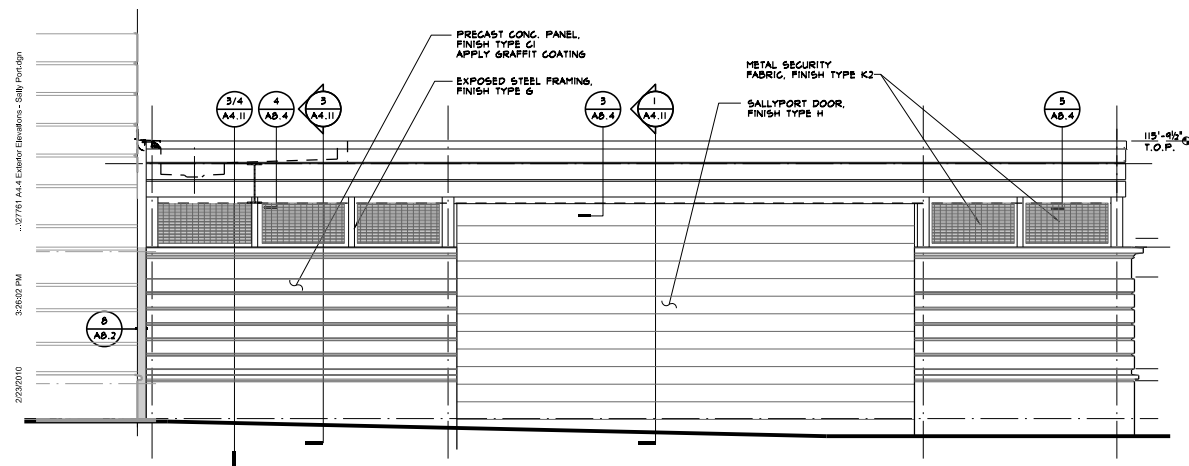
KEY PLAN

SHEET TITLE

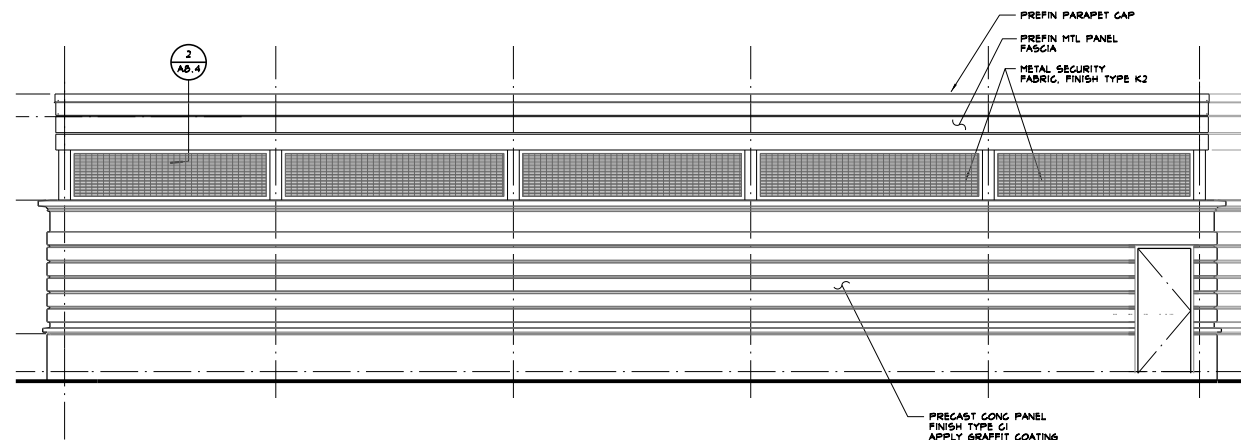
BUILDING
SECTIONS

SHEET NO.

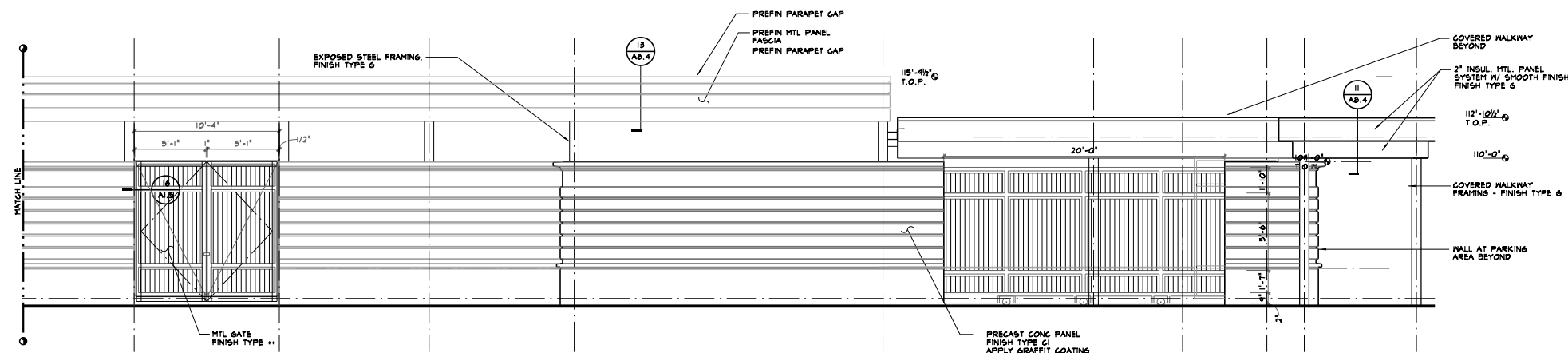
A4.3



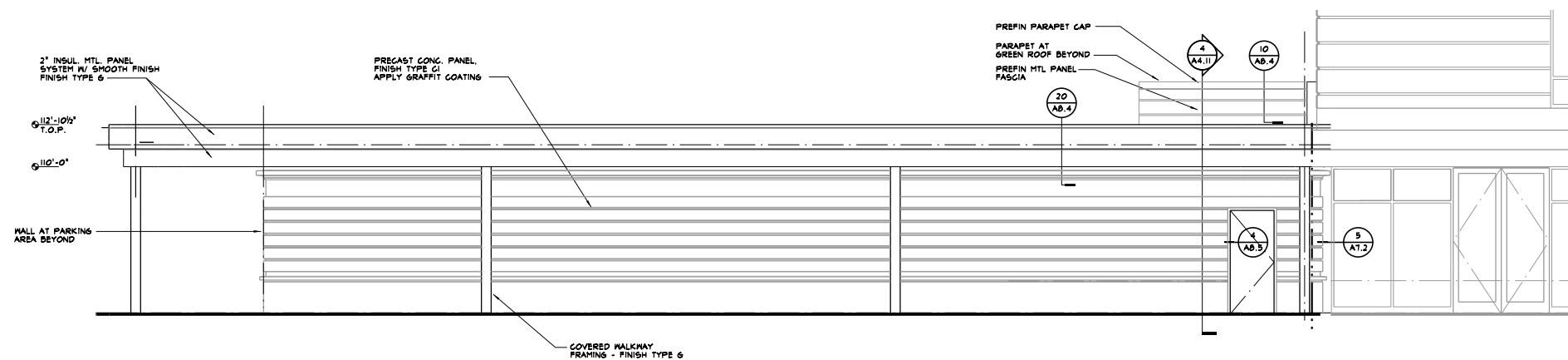
1 NORTH ELEVATION
SCALE: 1/4" = 1'-0"



4 WEST ELEVATION
SCALE: 1/4" = 1'-0"



2 WEST ELEVATION
SCALE: 1/4" = 1'-0"



3 SOUTH ELEVATION
SCALE: 1/4" = 1'-0"

SEAL
FOR REVIEW ONLY - NOT FOR CONSTRUCTION
FOR REVIEW ONLY - NOT FOR CONSTRUCTION

ISSUED

100% CONSTRUCTION DOCUMENTS 12/21/2009

AGENCY APPROVALS

PROJECT NO. 21761

NEW COURTHOUSE
SUPERIOR COURT
OF CALIFORNIA
LASSEN COUNTY

2610 RIVERSIDE DRIVE
SUSANVILLE, CA 96130

KEY PLAN

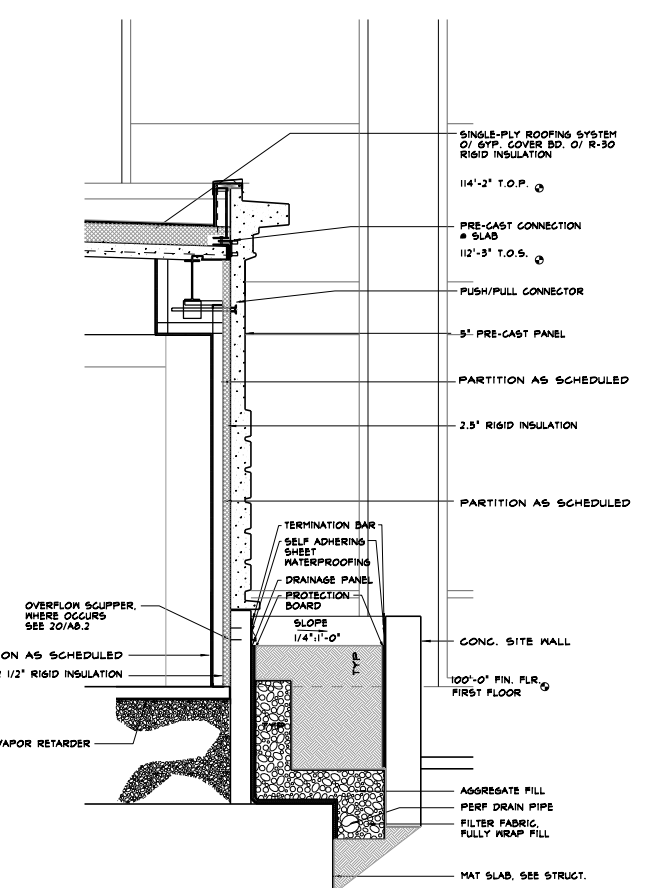
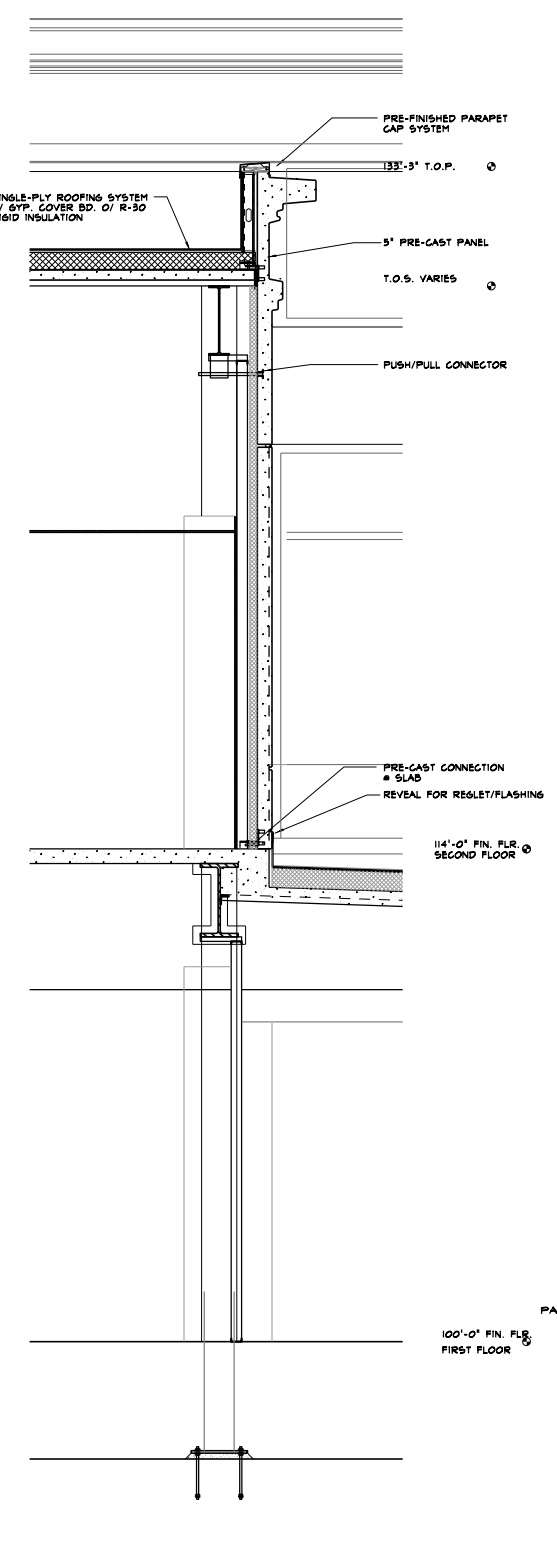
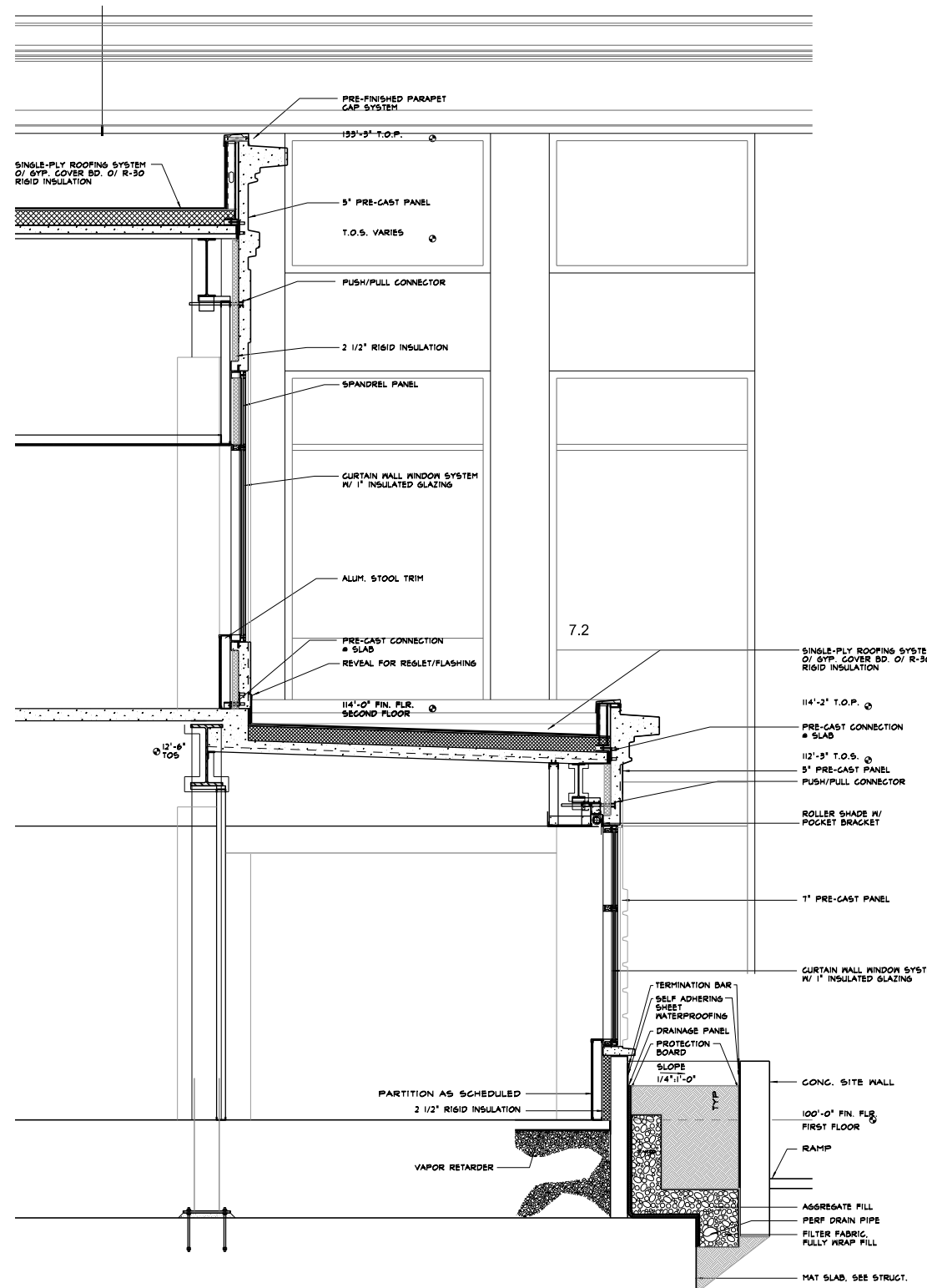
SHEET TITLE

BUILDING
ELEVATIONS
- SALLY PORT

SHEET NO.

A4.4

3/23/14 PM
2/23/2010
...07781 A4.5 W&B Section.dwg



SEAL
FOR REVIEW ONLY - NOT FOR CONSTRUCTION
FOR REVIEW ONLY - NOT FOR CONSTRUCTION

ISSUED
100% CONSTRUCTION DOCUMENTS 12/21/2009

AGENCY APPROVALS

PROJECT NO. 21761

NEW COURTHOUSE
SUPERIOR COURT
OF CALIFORNIA
LASSEN COUNTY

2610 RIVERSIDE DRIVE
SUSANVILLE, CA 96130

KEY PLAN

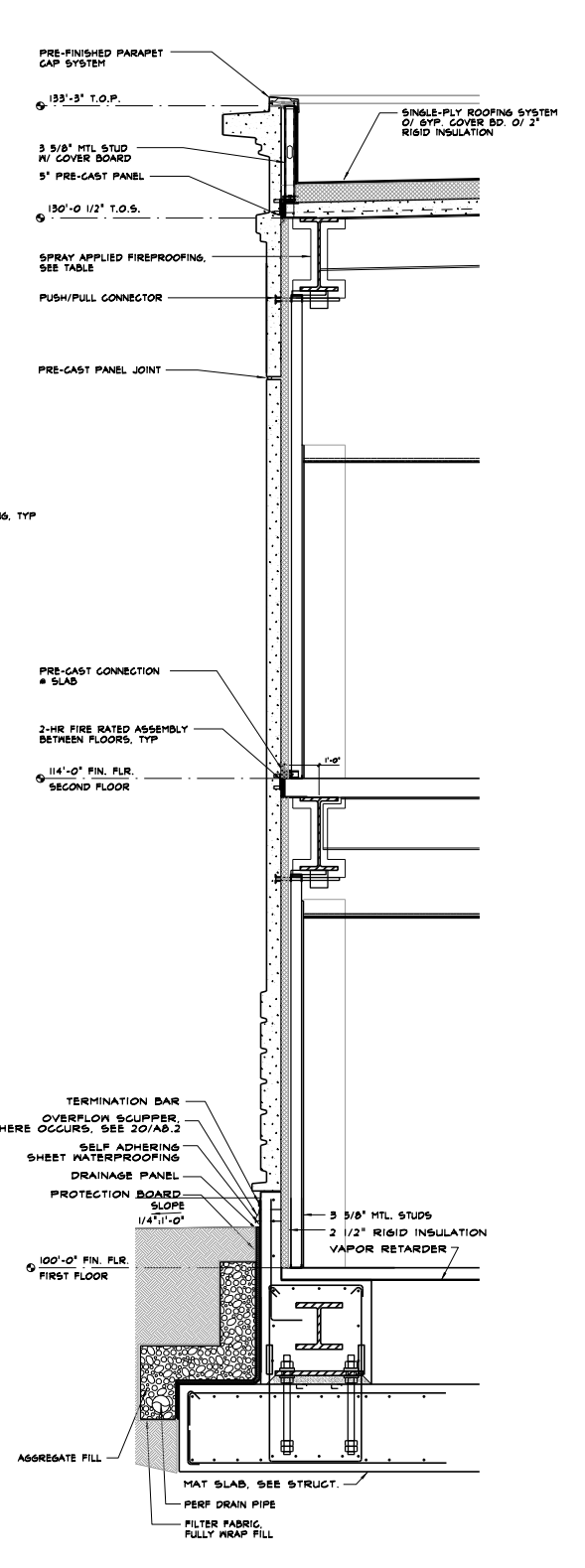
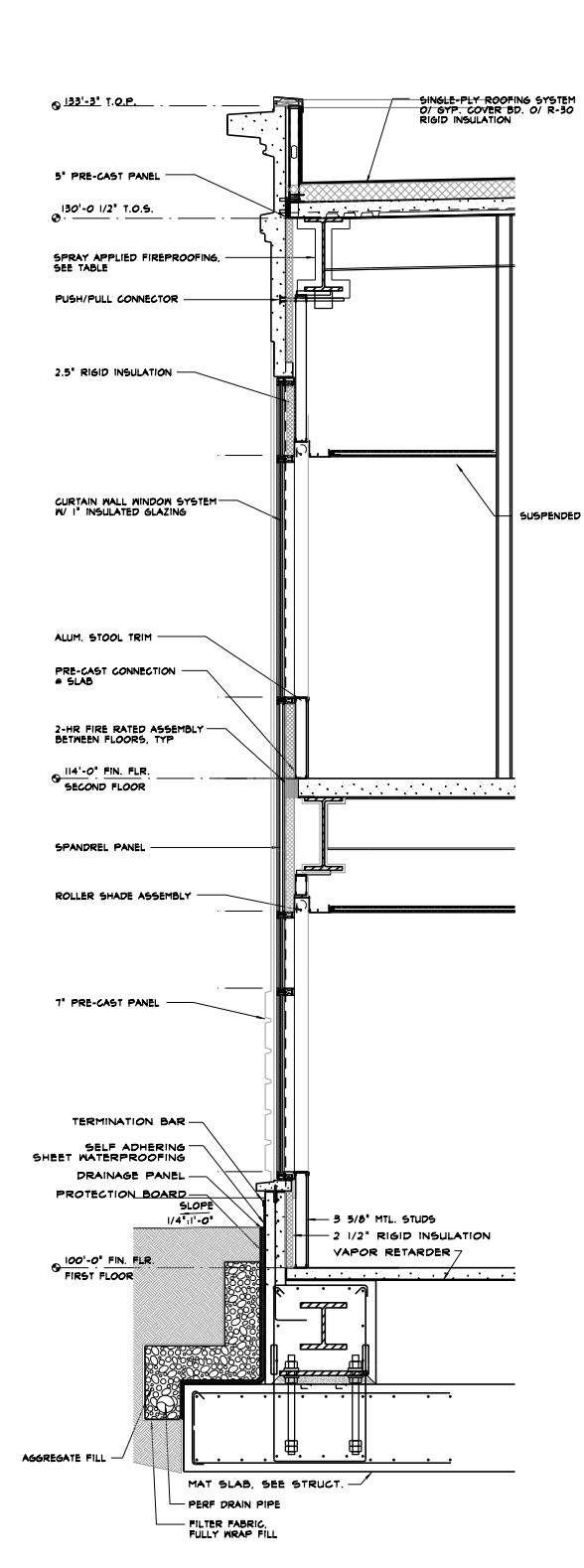
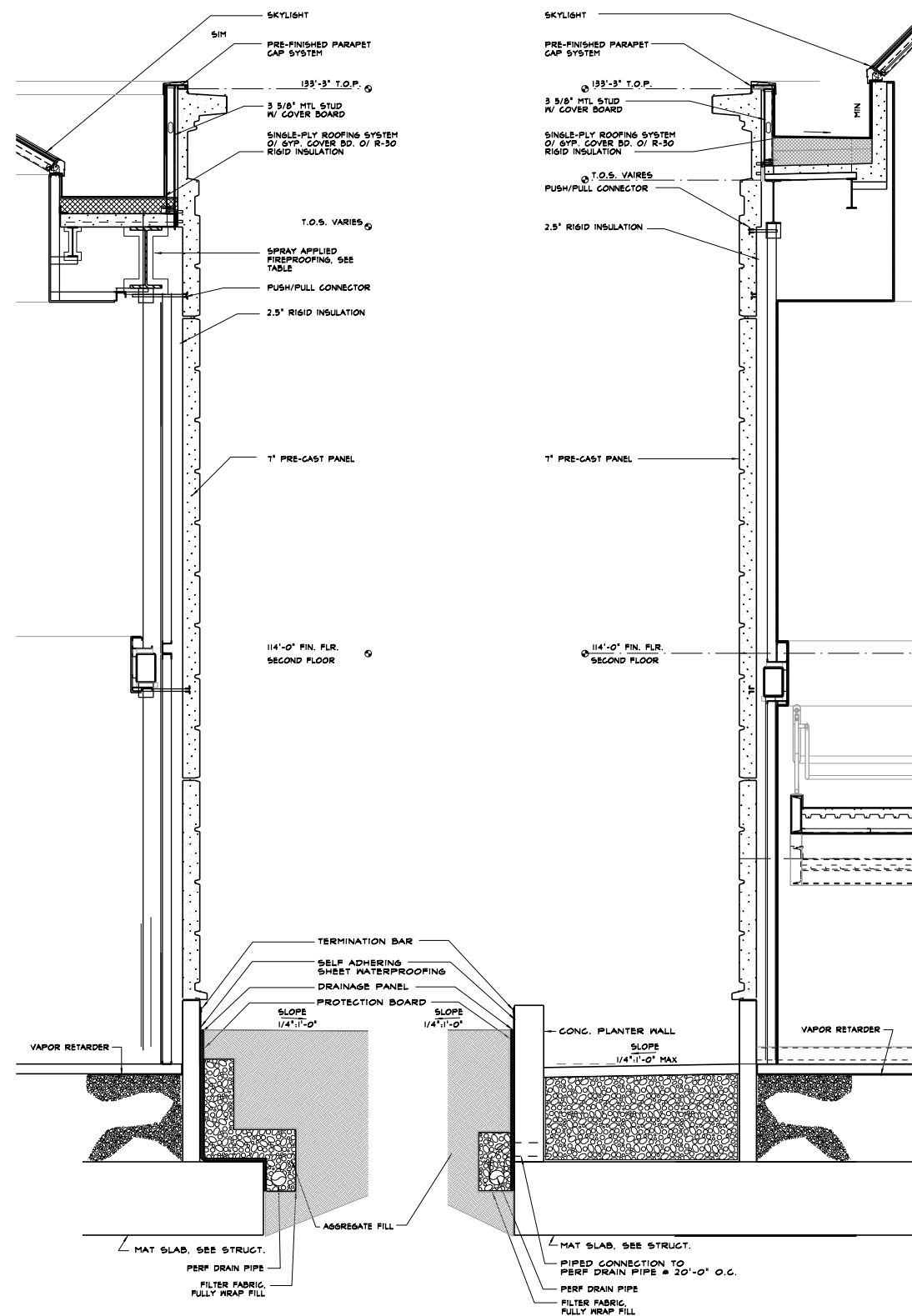
SHEET TITLE

WALL SECTIONS

SHEET NO.

A4.5

2/23/2010 3:37:27 PM ...27761 A4.6 WALL SECTION.dwg



FOR REVIEW ONLY - NOT FOR CONSTRUCTION

ISSUED
100% CONSTRUCTION DOCUMENTS 12/21/2009

AGENCY APPROVALS

PROJECT NO. 21761

NEW COURTHOUSE
SUPERIOR COURT
OF CALIFORNIA
LASSEN COUNTY

2610 RIVERSIDE DRIVE
SUSANVILLE, CA 96130

KEY PLAN

SHEET TITLE

WALL SECTIONS

SHEET NO.

1 WALL SECTION 5-29-09 1/2" = 1'-0"

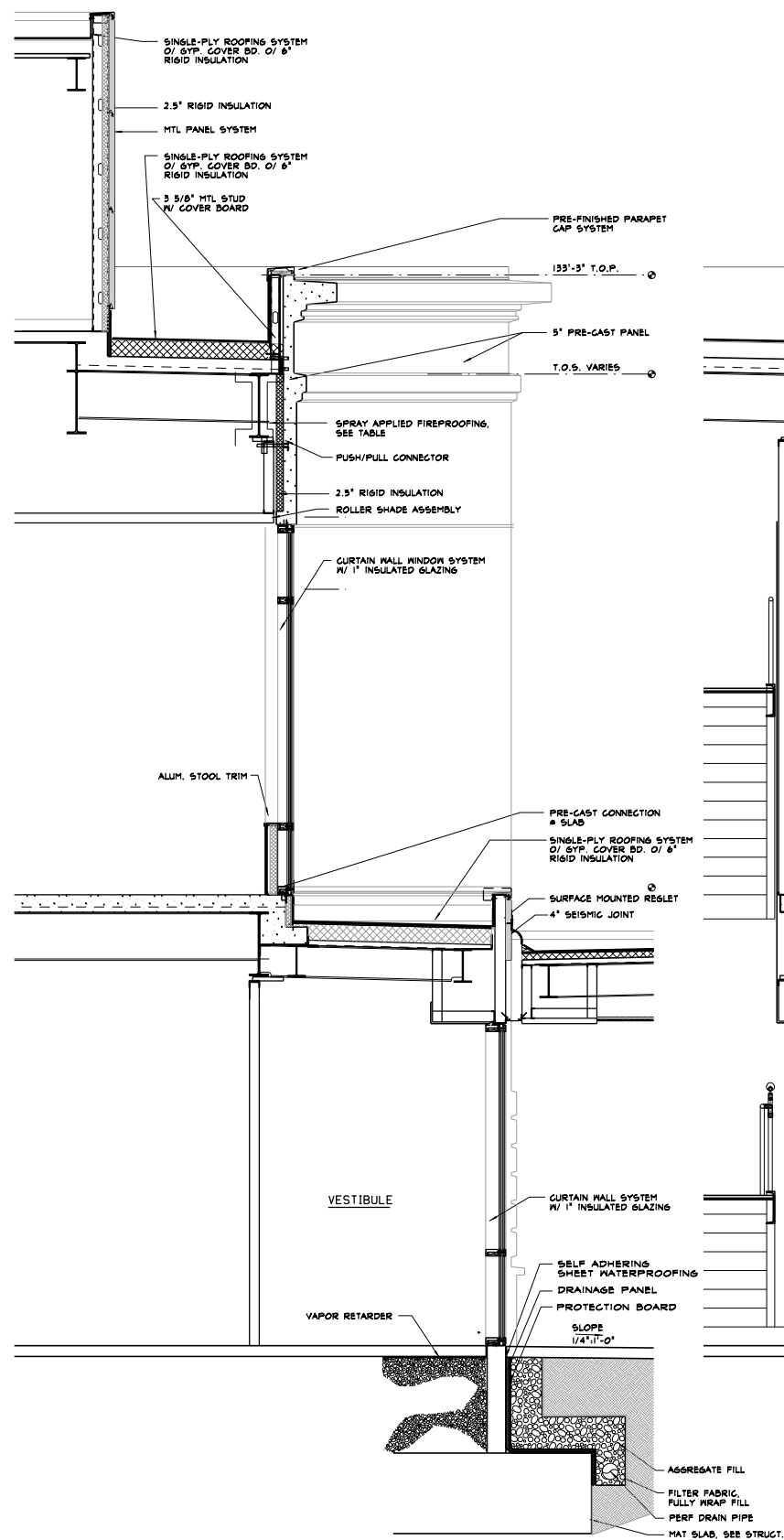
2 WALL SECTION 5-29-09 1/2" = 1'-0"

3 WALL SECTION 5-29-09 1/2" = 1'-0"

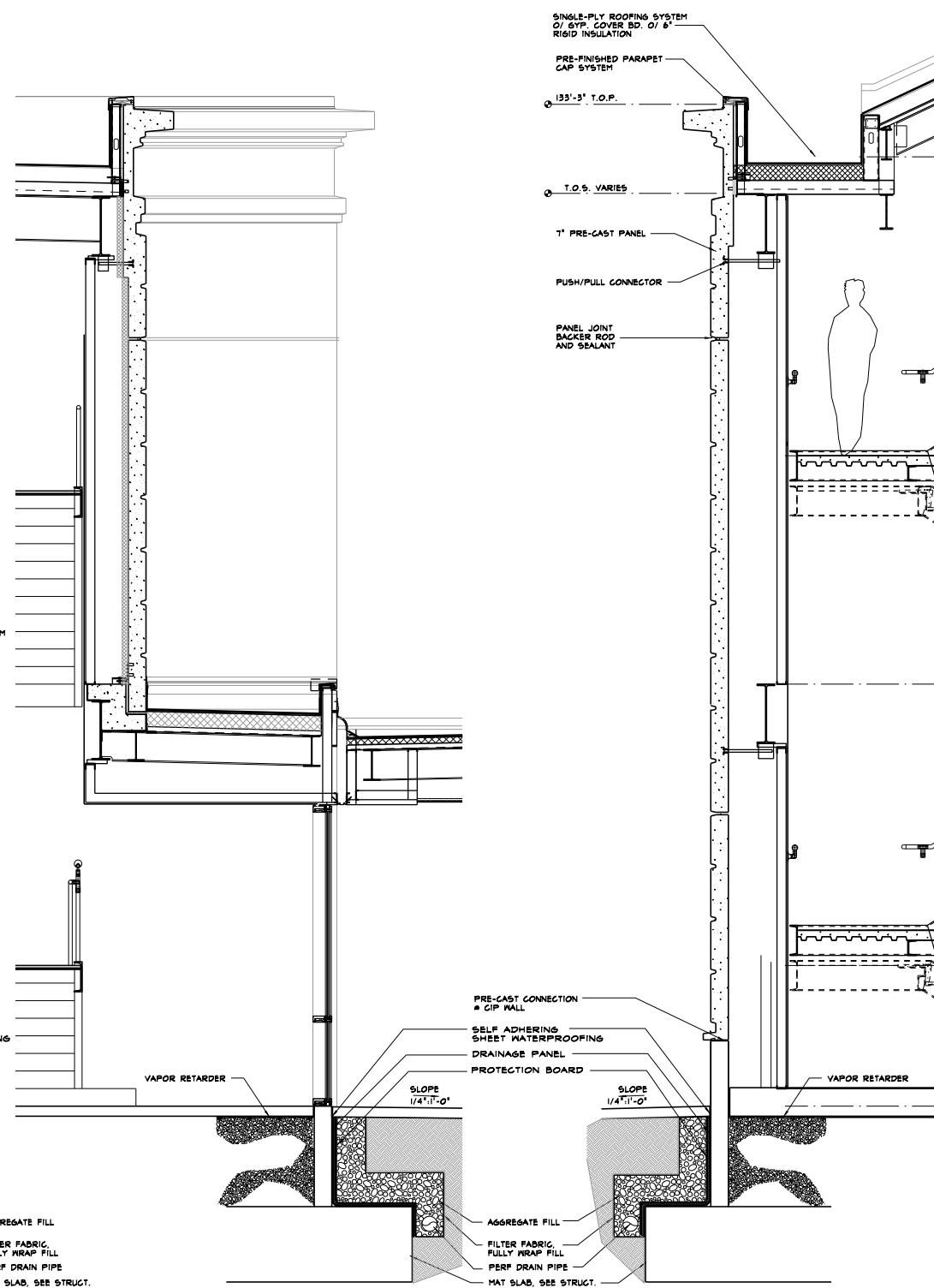
4 WALL SECTION 5-29-09 1/2" = 1'-0"

A4.6

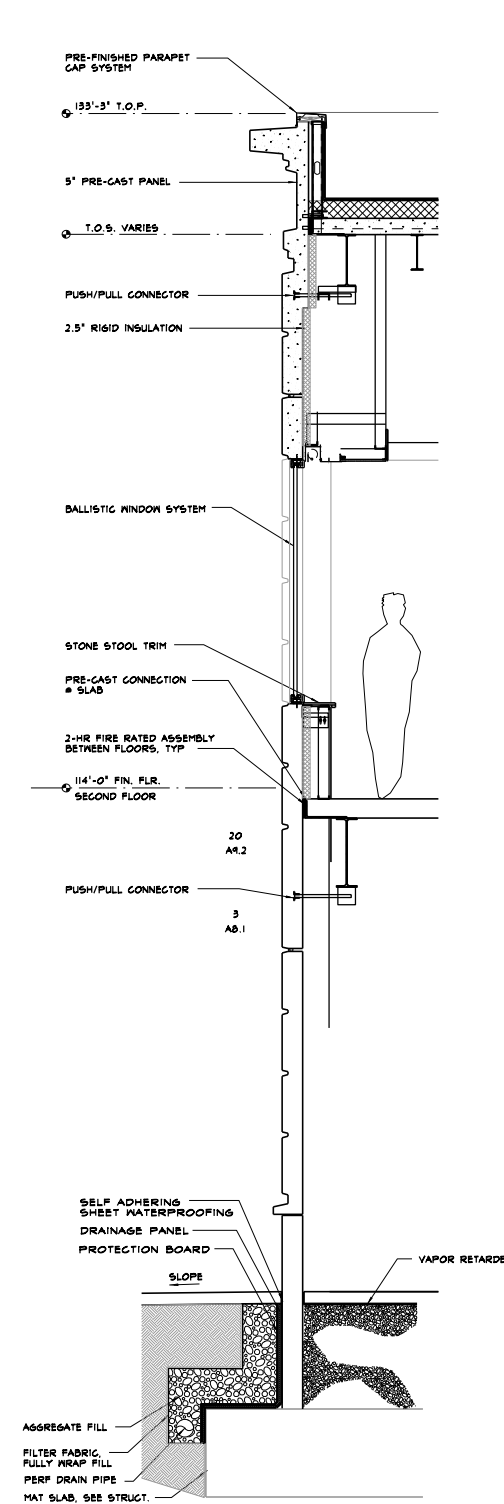
2/23/2010 3:42:22 PM ...07781 A4.7 WALL SECTION.dgn



1 WALL SECTION 5-29-09 1/2" = 1'-0"



2 WALL SECTION 5-29-09 1/2" = 1'-0"



3 WALL SECTION 5-29-09 1/2" = 1'-0"

FOR REVIEW ONLY - NOT FOR CONSTRUCTION

ISSUED
100% CONSTRUCTION DOCUMENTS 12/21/2009

AGENCY APPROVALS

PROJECT NO. 21761

NEW COURTHOUSE
SUPERIOR COURT
OF CALIFORNIA
LASSEN COUNTY

2610 RIVERSIDE DRIVE
SUSANVILLE, CA 96130

KEY PLAN

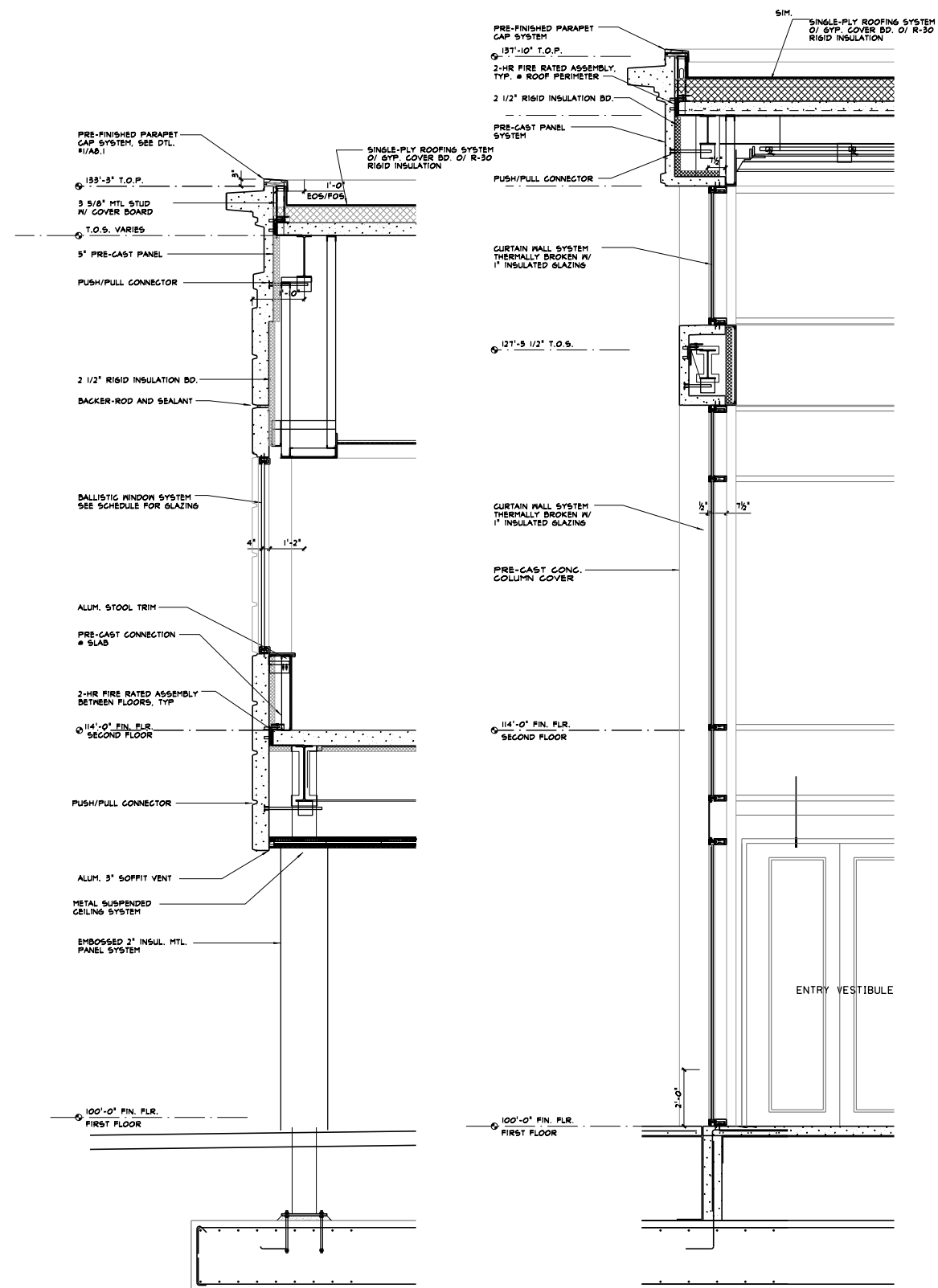
SHEET TITLE

WALL SECTIONS

SHEET NO.

A4.7

2/23/2010 3:48:23 PM ...:\7761_A4.8_W8_Rev00.rvt



FOR REVIEW ONLY - NOT FOR CONSTRUCTION

ISSUED
100% CONSTRUCTION DOCUMENTS 12/21/2009

AGENCY APPROVALS

PROJECT NO. 21761

NEW COURTHOUSE
SUPERIOR COURT
OF CALIFORNIA
LASSEN COUNTY

2610 RIVERSIDE DRIVE
SUSANVILLE, CA 96130

KEY PLAN

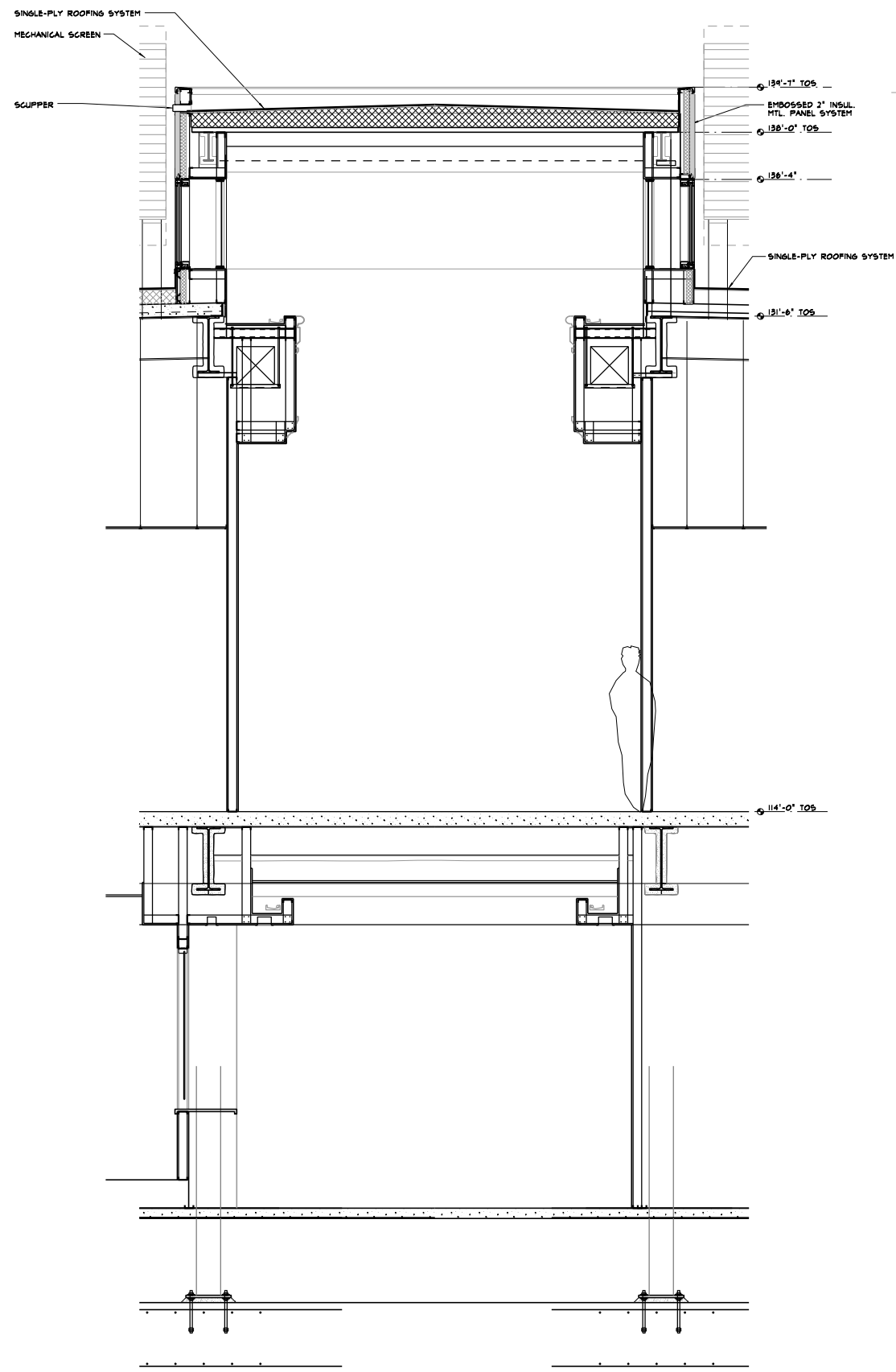
SHEET TITLE

WALL SECTIONS

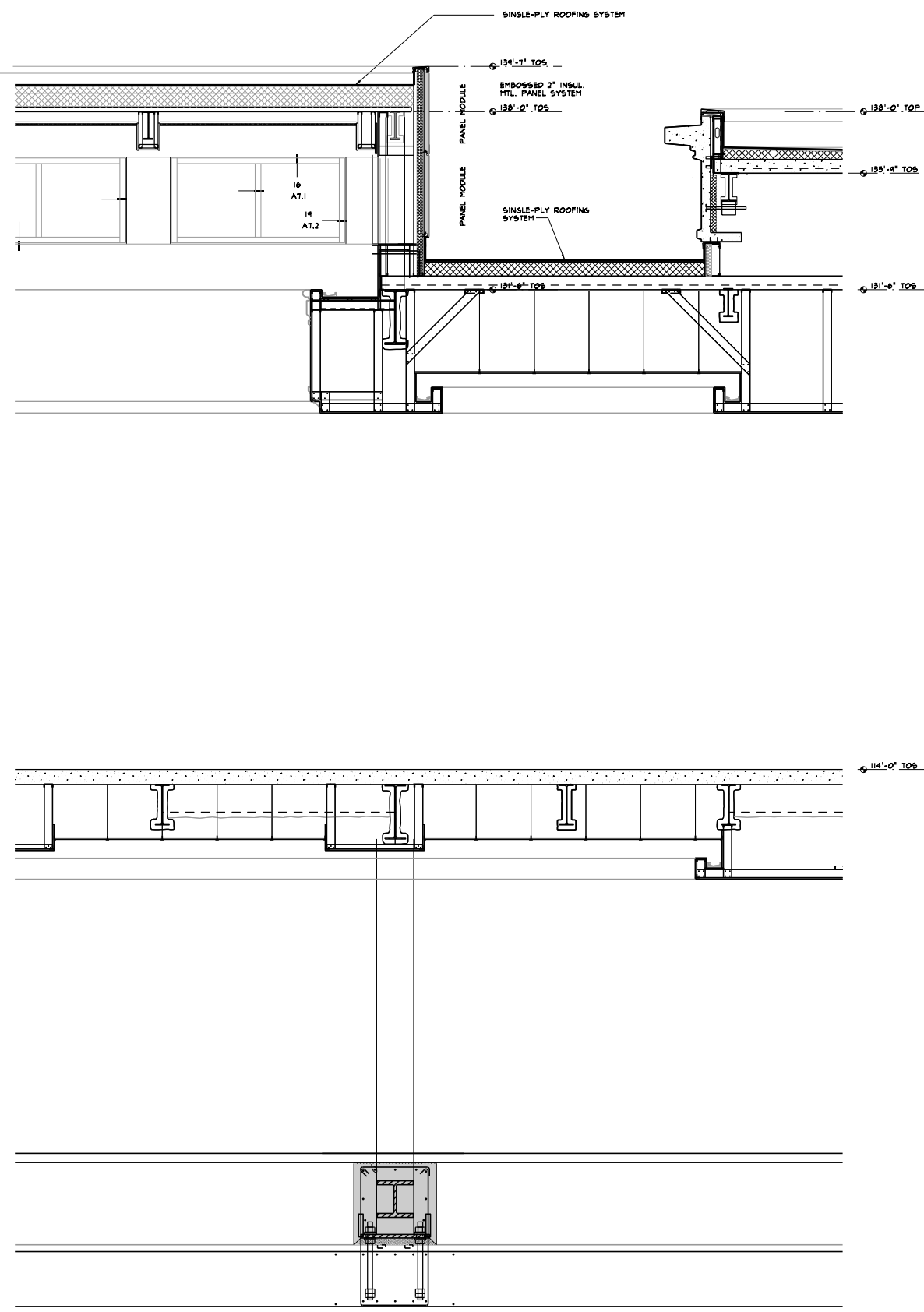
SHEET NO.

A4.8

2/2/2010 3:31:59 PM ...2778 A4.9 W88 Section.dwg



1 SECTION
1/2" = 1'-0"



2 SECTION
1/2" = 1'-0"

SEAL
FOR REVIEW ONLY - NOT FOR CONSTRUCTION
FOR REVIEW ONLY - NOT FOR CONSTRUCTION

ISSUED

100% CONSTRUCTION DOCUMENTS 12/21/2009

AGENCY APPROVALS

PROJECT NO. 21761

NEW COURTHOUSE
SUPERIOR COURT
OF CALIFORNIA
LASSEN COUNTY

2610 RIVERSIDE DRIVE
SUSANVILLE, CA 96130

KEY PLAN

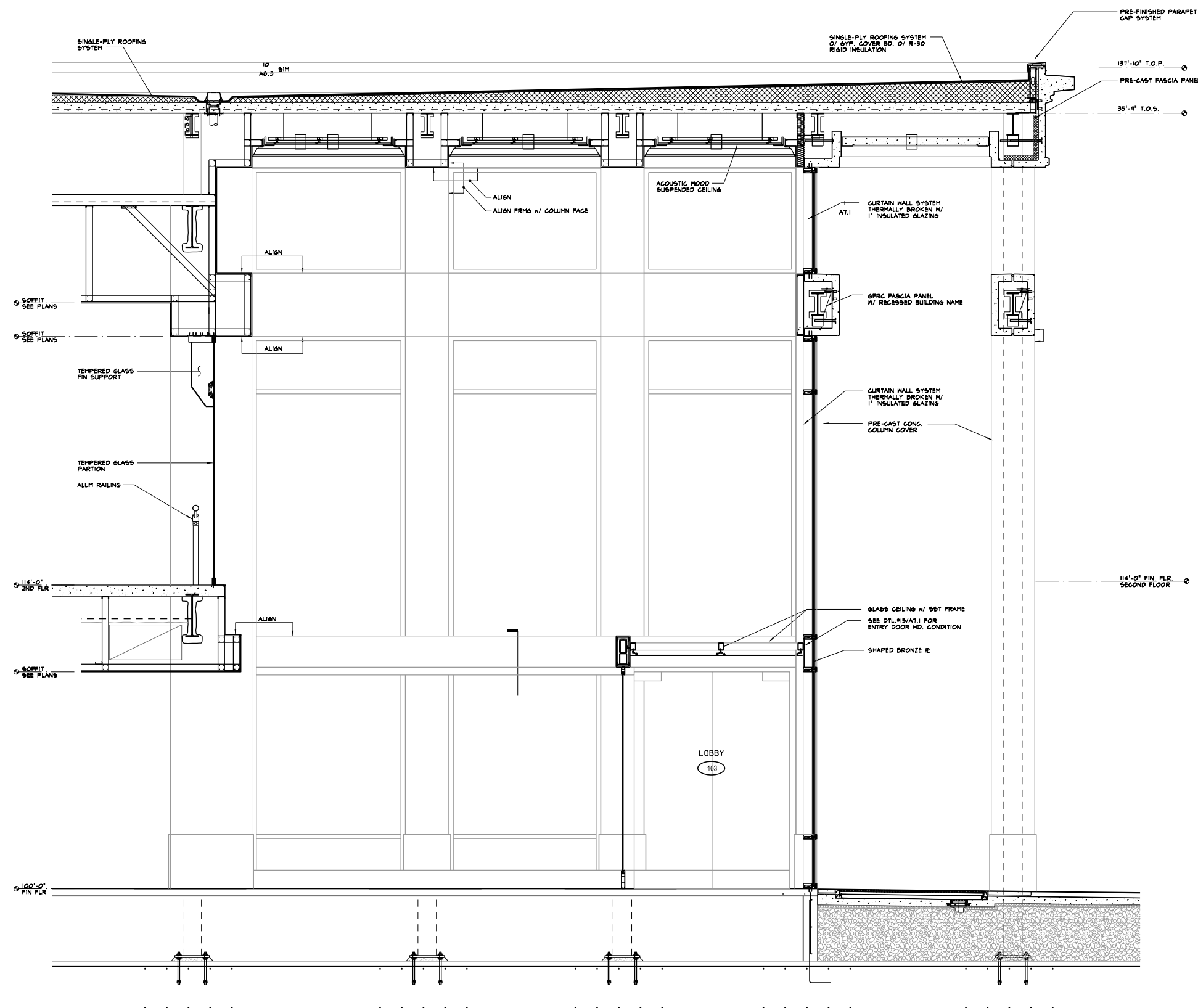
SHEET TITLE

WALL SECTIONS

SHEET NO.

A4.9

2/20/2010 3:45:39 PM ...0778 A4.10 Wall Sections.dgn



1 SECTION
1/2" = 1'-0"

SEAL
FOR REVIEW ONLY - NOT FOR CONSTRUCTION
FOR REVIEW ONLY - NOT FOR CONSTRUCTION

ISSUED
100% CONSTRUCTION DOCUMENTS 12/21/2009

AGENCY APPROVALS

PROJECT NO. 21761

NEW COURTHOUSE
SUPERIOR COURT
OF CALIFORNIA
LASSEN COUNTY

2610 RIVERSIDE DRIVE
SUSANVILLE, CA 96130

KEY PLAN

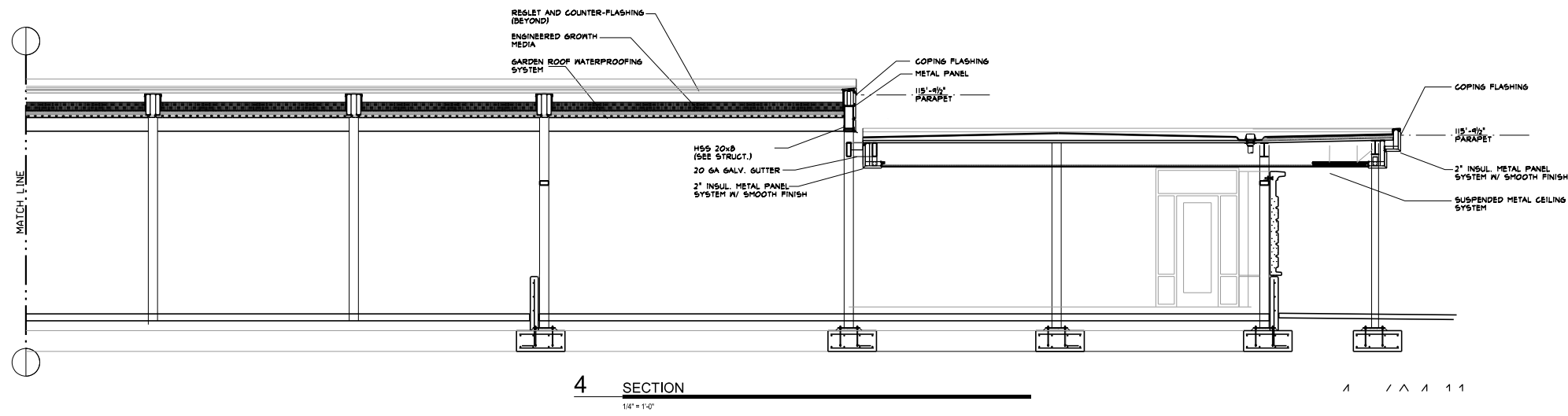
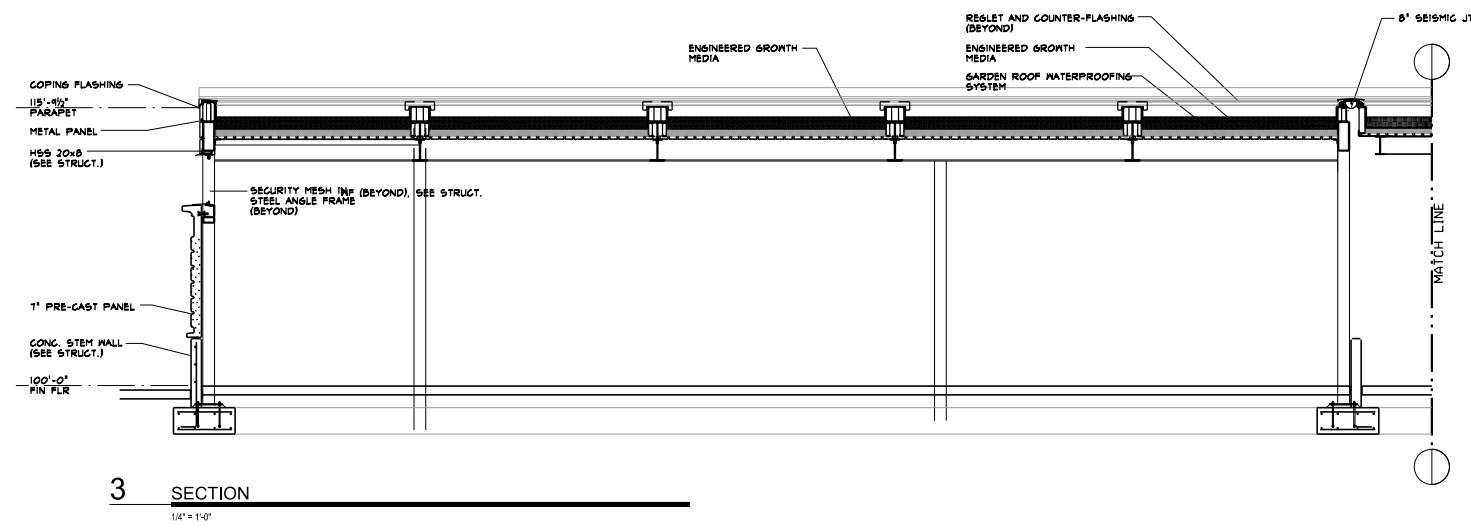
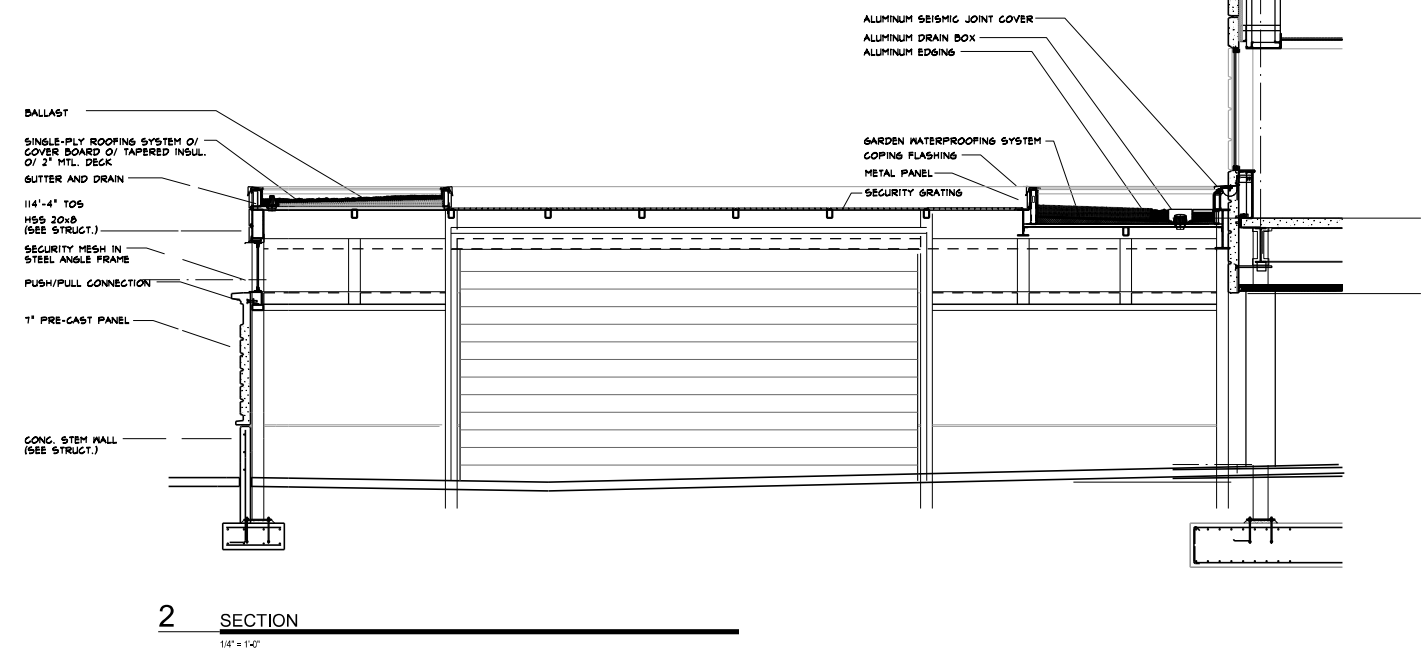
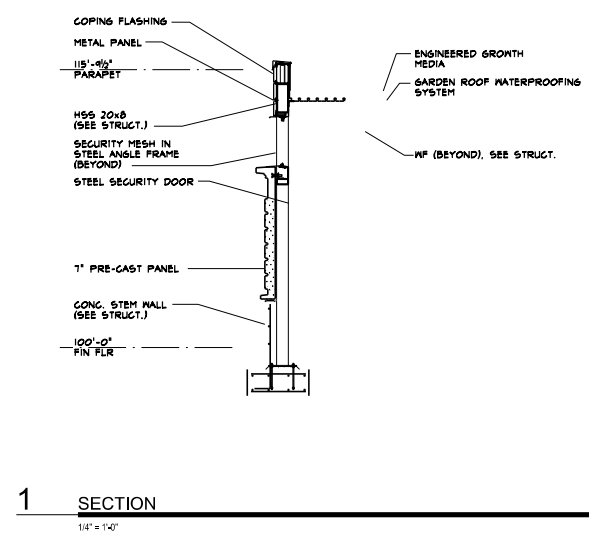
SHEET TITLE

WALL SECTIONS

SHEET NO.

A4.10

2/23/2010 4:02:23 PM ...27781 A4.11 Wall Section.dgn



SEAL
FOR REVIEW ONLY - NOT FOR CONSTRUCTION
FOR REVIEW ONLY - NOT FOR CONSTRUCTION

ISSUED

100% CONSTRUCTION DOCUMENTS 12/21/2009

AGENCY APPROVALS

PROJECT NO. 21761

NEW COURTHOUSE
SUPERIOR COURT
OF CALIFORNIA
LASSEN COUNTY

2610 RIVERSIDE DRIVE
SUSANVILLE, CA 96130

KEY PLAN

SHEET TITLE

**BUILDING SECTIONS
- SALLY PORT**

SHEET NO.

A4.11



HALL OF JUSTICE

HALL OF JUSTICE

