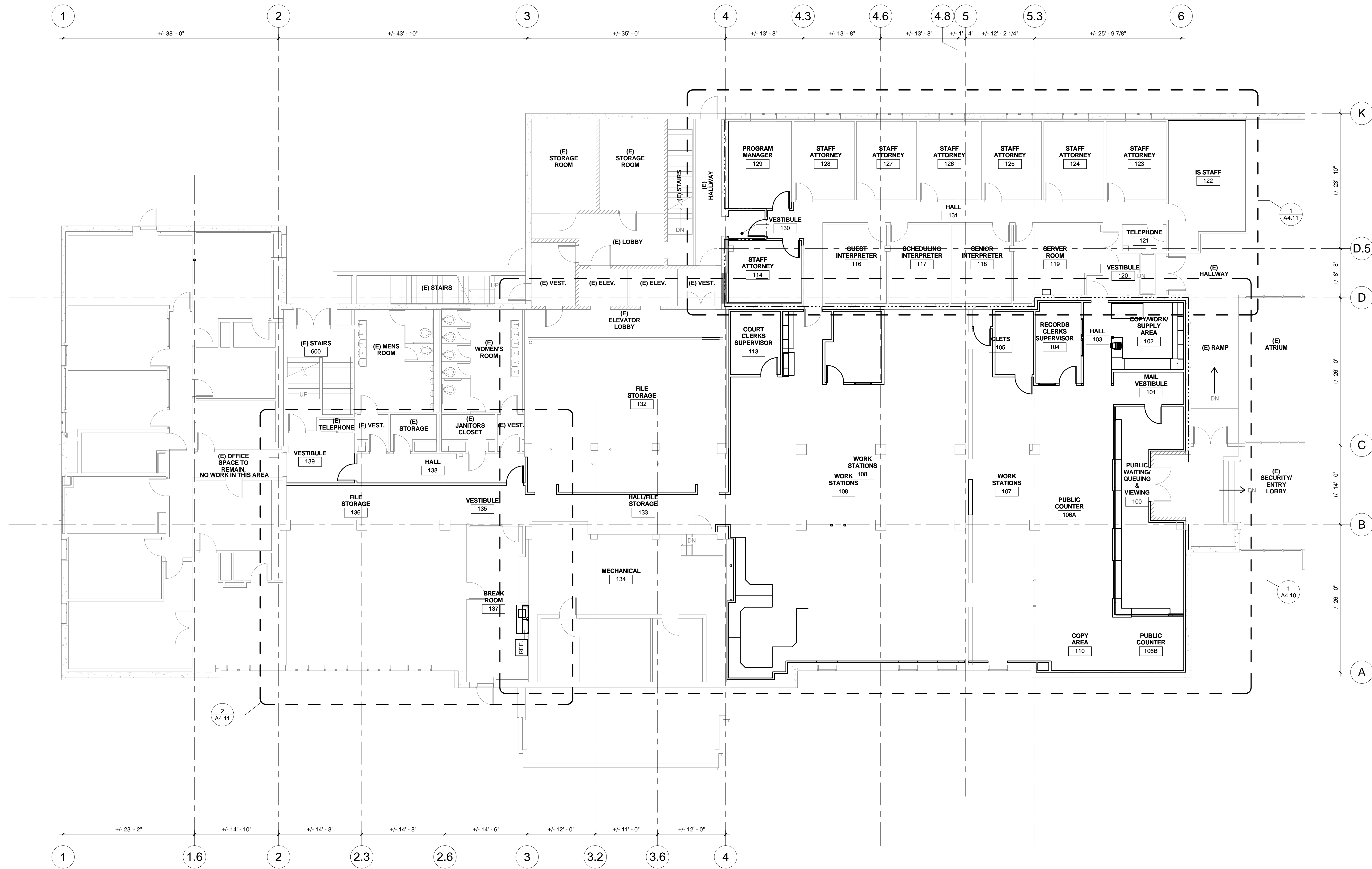
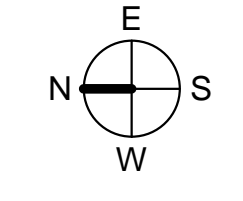


ONE AND ONE-HALF INCH = ONE FOOT  
 ONE INCH = ONE FOOT  
 THREE-QUARTERS INCH = ONE FOOT  
 ONE-HALF INCH = ONE FOOT  
 ONE-QUARTER INCH = ONE FOOT  
 ONE-EIGHTH INCH = ONE FOOT  
 ONE-SIXTEENTH INCH = ONE FOOT  
 ONE INCH = TWENTY FEET



1 HALL OF JUSTICE - FLOOR PLAN  
 1/8" = 1'-0"



**GENERAL NOTES:**

- SEE SHEET T0.00 AND SPECIFICATIONS FOR GENERAL NOTES AND SCOPE OF WORK THAT MAY NOT BE COMPLETELY IDENTIFIED ON THESE SHEETS.
- SEE A8.00 FOR PARTITION TYPES.
- SEE A6.10 AND A6.20 FOR DOOR AND INTERIOR WINDOW TYPES.
- ALL DIMENSIONS TO EXISTING ITEMS ARE APPROXIMATE AND SHALL BE VERIFIED IN FIELD BY CONTRACTOR. DIMENSIONS TO NEW WORK ARE TO FACE OF STUD OR CONCRETE MASONRY UNIT, U.O.A.
- SEE A9.10 AND A9.20 FOR FURNITURE /EQUIPMENT PLANS.
- WHERE A RATED WALL INTERSECTS WITH AN EXTERIOR WALL, CONTINUE RATED ASSEMBLY TO INTERIOR FACE OF EXTERIOR WALL (BISECTING ANY FURRING AT INSIDE FACE OF EXTERIOR WALL).
- SEE A1.13 AND A1.20 FOR DEMOLITION PLANS.
- SEE A8.00 FOR RATED PARTITION HEAD DETAILS AT UNDERSIDE OF DECK AND FOR RATED THROUGH-WALL PENETRATION DETAILS.
- SEE A8.53 FOR FIRE EXTINGUISHER CABINET DETAIL.
- CONTRACTOR TO VERIFY & COORDINATE OPENING WIDTHS WITH REQUIREMENTS OF SELECTED DOOR/WINDOW SYSTEM.
- SEE 13/A5.22 FOR PLATFORM FRAMING PLAN AND DETAILS.

**WALL LEGEND:**

- 1 HOUR WALL
- 2 HOUR WALL
- 3 HOUR WALL
- (E) MASONRY WALL
- (E) CONCRETE WALL
- (E) STUD WALL
- (N) STUD WALL

CONSULTANTS

ARCHITECT



600 Q Street  
 Suite 100  
 Sacramento, CA 95811  
 (916) 329-4000  
 www.nlararch.com

50% DESIGN DEVELOPMENT SET

INITIAL BOX

NO.	DWG BY	DATE

REVISIONS

NO.	DESCRIPTION	DATE

DATE 12/12/08  
 JOB NO. Y809.00

SHEET TITLE  
**FIRST FLOOR  
 PLAN - HOJ**

SHEET No.  
**A2.10**  
 SHEET \_\_\_\_ OF \_\_\_\_ TOTAL