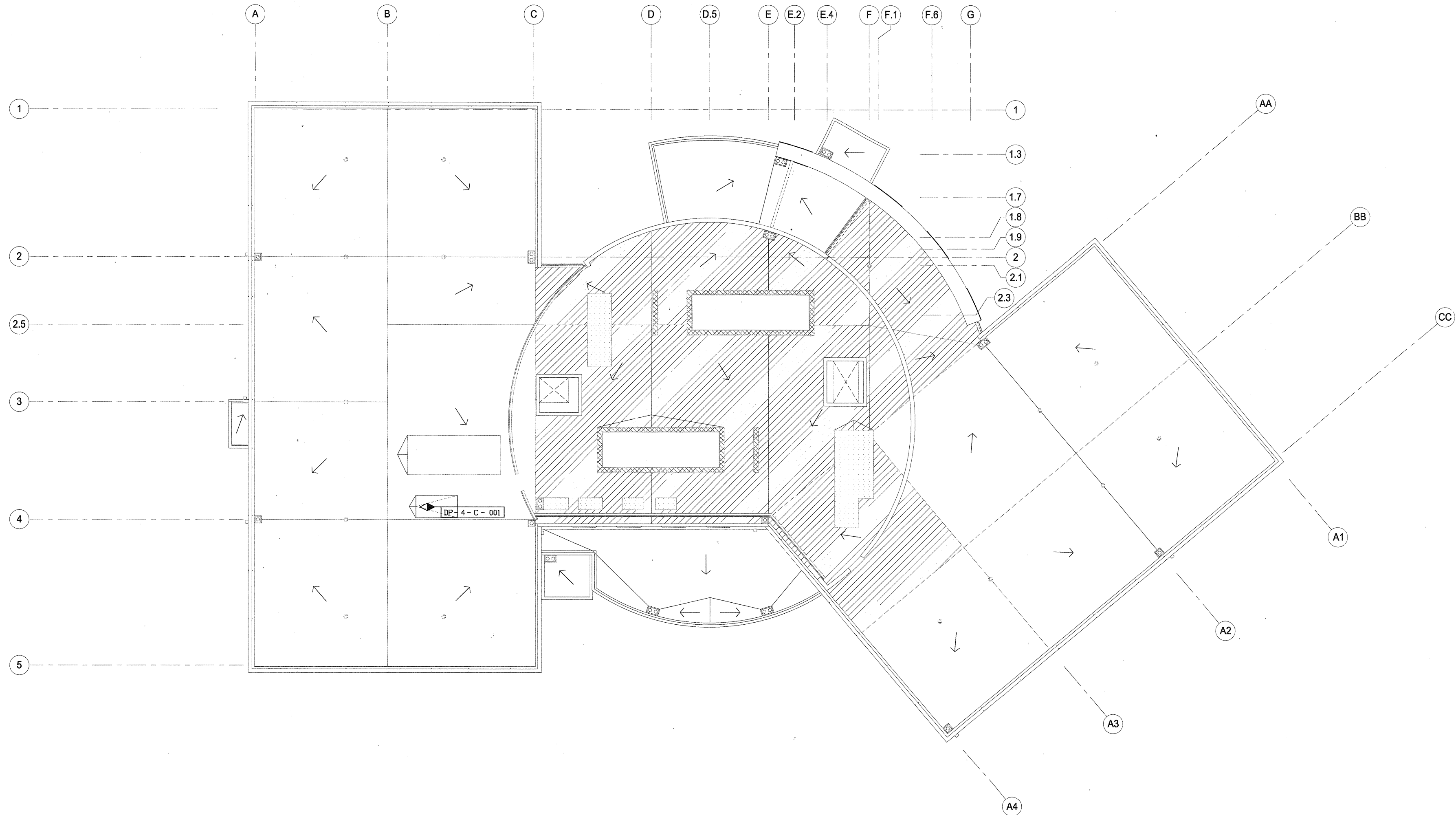
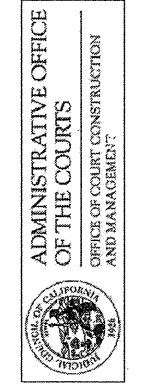


ALL IDEAS, DESIGN, ARRANGEMENTS AND PLANS INDICATED OR REPRESENTED BY THIS DRAWING ARE OWNED BY, AND THE PROPERTY OF CARRIER JOHNSON, AND WERE CREATED, EVOLVED AND DEVELOPED FOR USE ON, AND IN CONNECTION WITH THIS PROJECT. NONE OF SUCH IDEAS, DESIGN, ARRANGEMENTS, OR PLANS SHALL BE USED BY, OR DISCLOSED TO ANY PERSON, FIRM, OR CORPORATION FOR ANY PURPOSE WHATSOEVER WITHOUT THE WRITTEN PERMISSION OF CARRIER JOHNSON. PILING THESE DRAWINGS OR SPECIFICATIONS WITH ANY PUBLIC AGENCY IS NOT A PUBLICATION OF SAME. NO COPYING, REPRODUCTION OR USE THEREOF IS PERMISSIBLE WITHOUT THE CONSENT OF CARRIER JOHNSON.



**carrierjohnson**  
architecture for urban environments  
1301 third avenue san diego ca 92101  
phone 619.239.2353 | fax 619.239.6227

**COURT OF APPEAL  
FOURTH APPELLATE DISTRICT  
DIVISION THREE  
SANTA ANA, CA**



02-09-07 50% CD SUBMITTAL  
ISSUES:

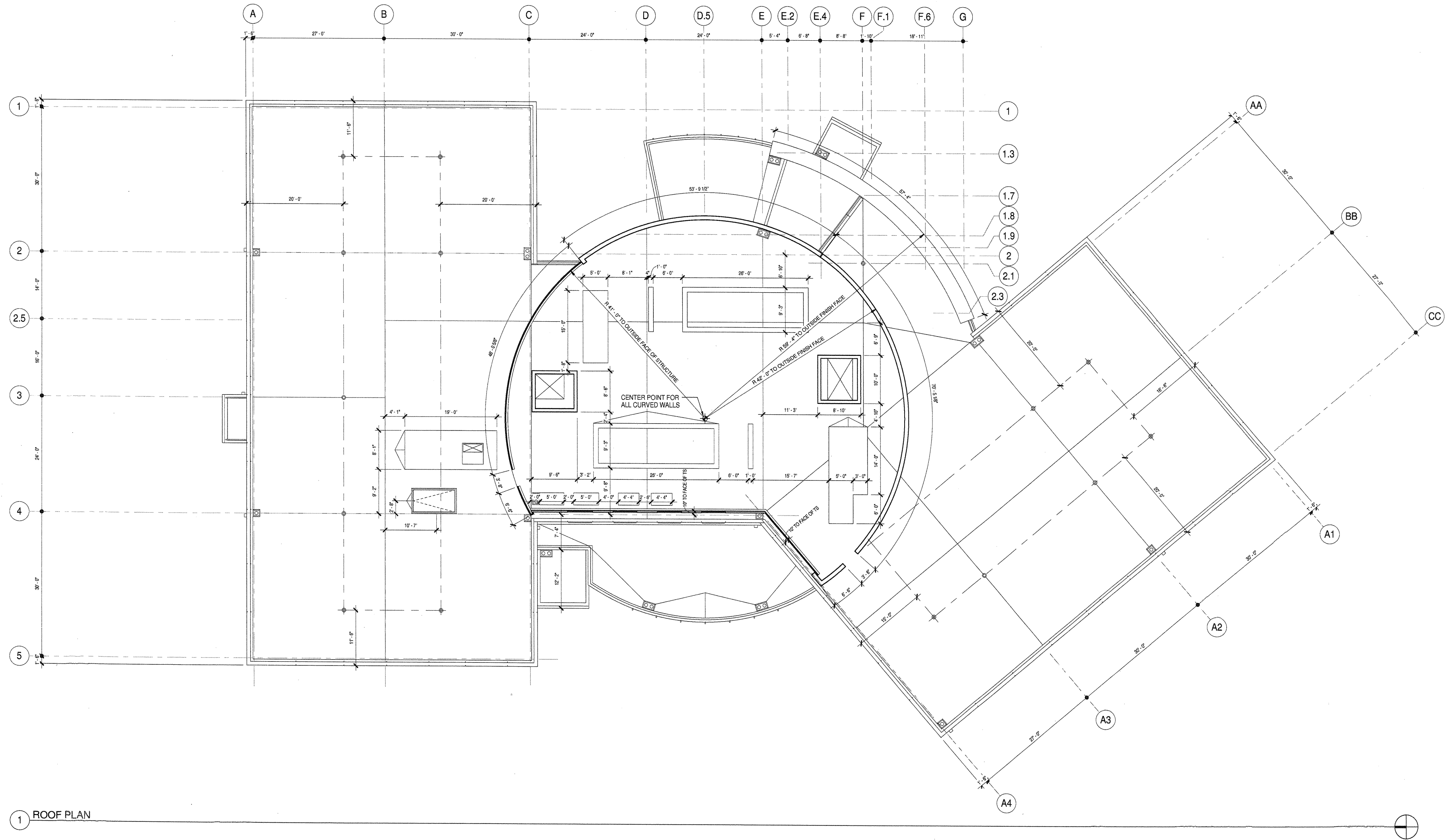
PROJECT NO: \_\_\_\_\_  
FILENAME: \_\_\_\_\_  
DRAWN BY: \_\_\_\_\_ CHECKED BY: \_\_\_\_\_  
PLOT DATE: 4-05-07  
TITLE: \_\_\_\_\_

**SECURITY  
ROOF LEVEL  
PLAN**

DRAWING NO:

**ES 2.4**

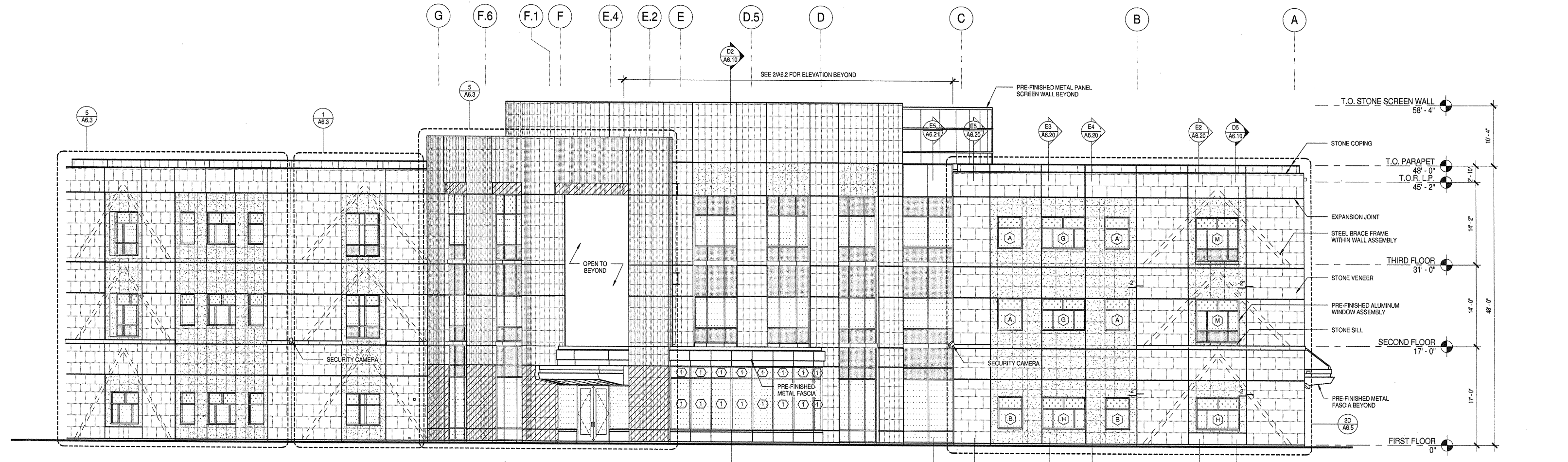
ALL IDEAS, DESIGN, ARRANGEMENTS AND PLANS INDICATED OR REPRESENTED BY THIS DRAWING ARE OWNED BY AND THE PROPERTY OF CARRIERJOHNSON AND WERE CREATED, ENDED AND DEVELOPED FOR USE ON AND IN CONNECTION WITH THIS PROJECT. NONE OF SUCH IDEAS, DESIGN ARRANGEMENTS, OR PLANS SHALL BE USED BY OR DISCLOSED TO ANY PERSON, FIRM, OR CORPORATION FOR ANY PURPOSE WHATSOEVER WITHOUT THE WRITTEN PERMISSION OF CARRIERJOHNSON. FILING THESE DRAWINGS OR SPECIFICATIONS WITH ANY PUBLIC AGENCY IS NOT A PUBLICATION OF SAME. NO COPYING, REPRODUCTION OR USE THEREOF IS PERMISSIBLE WITHOUT THE CONSENT OF CARRIERJOHNSON.



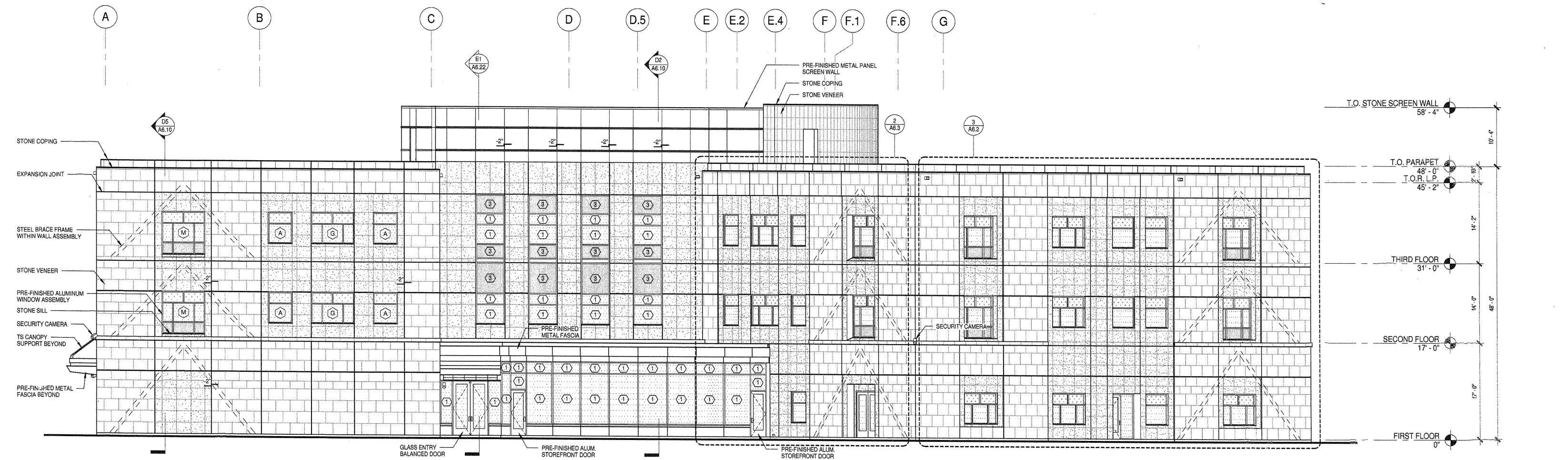
1 ROOF PLAN



ALL IDEAS, DESIGN ARRANGEMENTS AND PLANS INDICATED OR REPRESENTED BY THIS DRAWING ARE OWNED BY, AND THE PROPERTY OF, CARRIER JOHNSON AND WERE CREATED, ENDED AND DEVELOPED FOR USE ON, AND IN CONNECTION WITH, THIS PROJECT. NONE OF SUCH IDEAS, DESIGN ARRANGEMENTS, OR PLANS SHALL BE USED BY, OR DISCLOSED TO ANY PERSON, FIRM, OR CORPORATION FOR ANY PURPOSES WHATSOEVER WITHOUT THE WRITTEN PERMISSION OF CARRIER JOHNSON. FILING THESE DRAWINGS OR SPECIFICATIONS WITH ANY PUBLIC AGENCY IS NOT A PUBLICATION OF SAME. NO COPYING, REPRODUCTION OR USE THEREOF IS PERMISSIBLE WITHOUT THE CONSENT OF CARRIER JOHNSON.



1 OVERALL EAST ELEVATION  
SCALE: 1/8" = 1'-0"

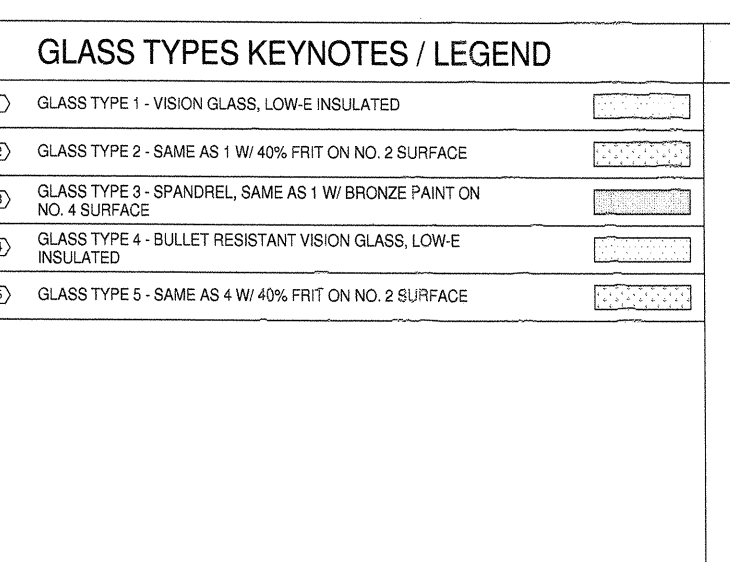


2 OVERALL WEST ELEVATION  
SCALE: 1/8" = 1'-0"

EXT. ELEVATION GENERAL NOTES	
1.	ALL EXTERIOR STEEL AND MISCELLANEOUS METALS SHALL BE HOT DIP GALVANIZED AND PAINTED, U.O.N.
2.	PREMISES IDENTIFICATION: ADDRESS NUMERALS SHALL BE PLACED IN SUCH A POSITION AS TO BE PLAINLY VISIBLE AND LEGIBLE FROM THE STREET OR ROAD FRONTING THE PROPERTY. NUMBERS SHALL CONTRAST WITH THEIR BACKGROUND.
3.	PROVIDE TEMPERED SAFETY GLAZING AS FOLLOWS: (CBC SECTION 2406) A. GLAZING IN DOORS B. FIXED GLAZING WITHIN 24" OF DOORS C. GLAZING ADJACENT TO A WALKING SURFACE WITH BOTTOM EDGE LESS THAN 18" AFF AND TOP EDGE GREATER THAN 36" AFF.
4.	AN INDIVIDUAL STONE VENEER TILE SHALL NOT HAVE A SURFACE AREA OVER 720 SQUARE INCHES.

EXTERIOR MATERIAL LEGEND	
	STONE VENEER TYPE 1
	STONE VENEER TYPE 2
	STONE VENEER TYPE 3
	STONE VENEER TYPE 4

GLASS TYPES KEYNOTES / LEGEND	
①	GLASS TYPE 1 - VISION GLASS, LOW-E INSULATED
②	GLASS TYPE 2 - SAME AS 1 W/ 40% FRIT ON NO. 2 SURFACE
③	GLASS TYPE 3 - SPANDREL, SAME AS 1 W/ BRONZE PAINT ON NO. 4 SURFACE
④	GLASS TYPE 4 - BULLET RESISTANT VISION GLASS, LOW-E INSULATED
⑤	GLASS TYPE 5 - SAME AS 4 W/ 40% FRIT ON NO. 2 SURFACE



PROJECT INFORMATION	
PROJECT NO:	4510.10
FILE NAME:	P:\4510.10\Rev\4510 central.rvt
DRAWN BY:	CHECKED BY:
PLOT DATE:	
TITLE:	EXTERIOR ELEVATIONS
DRAWING NO:	A6.1

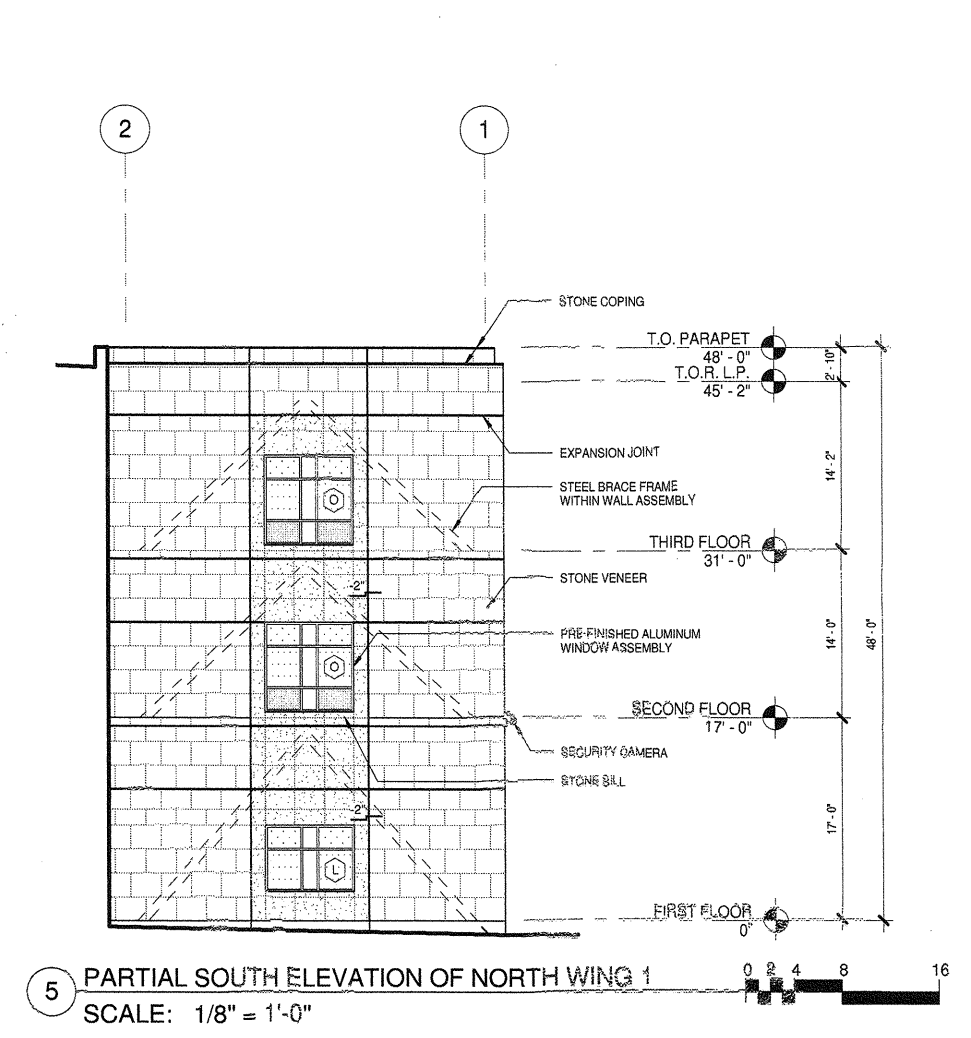
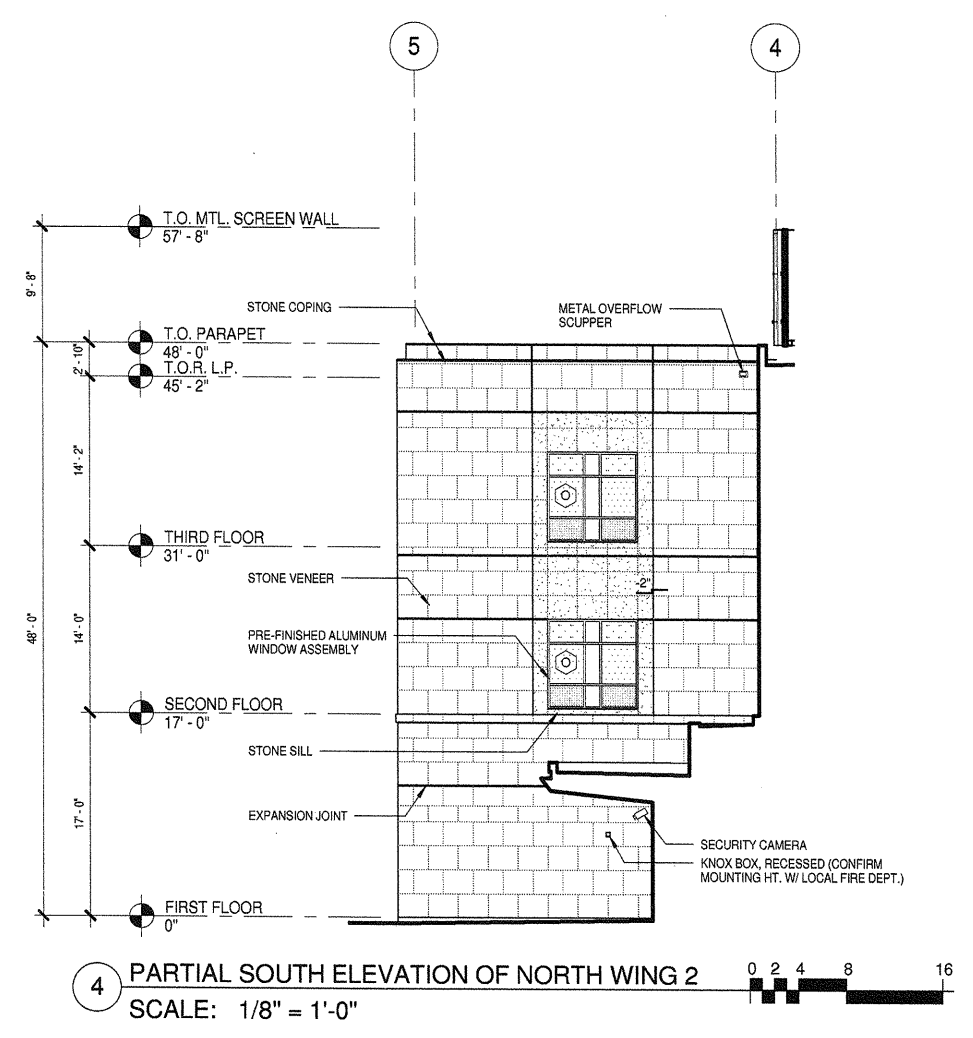
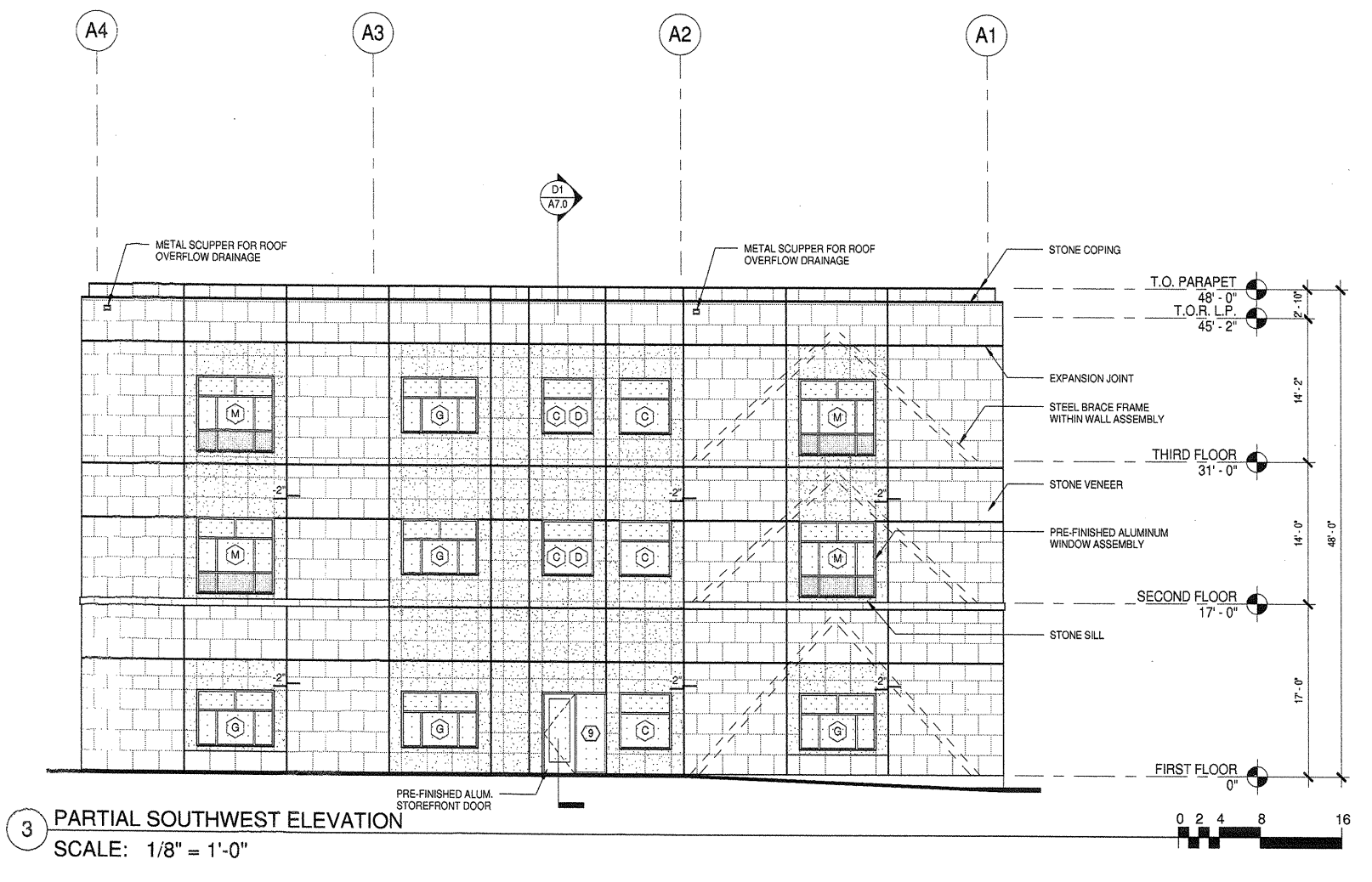
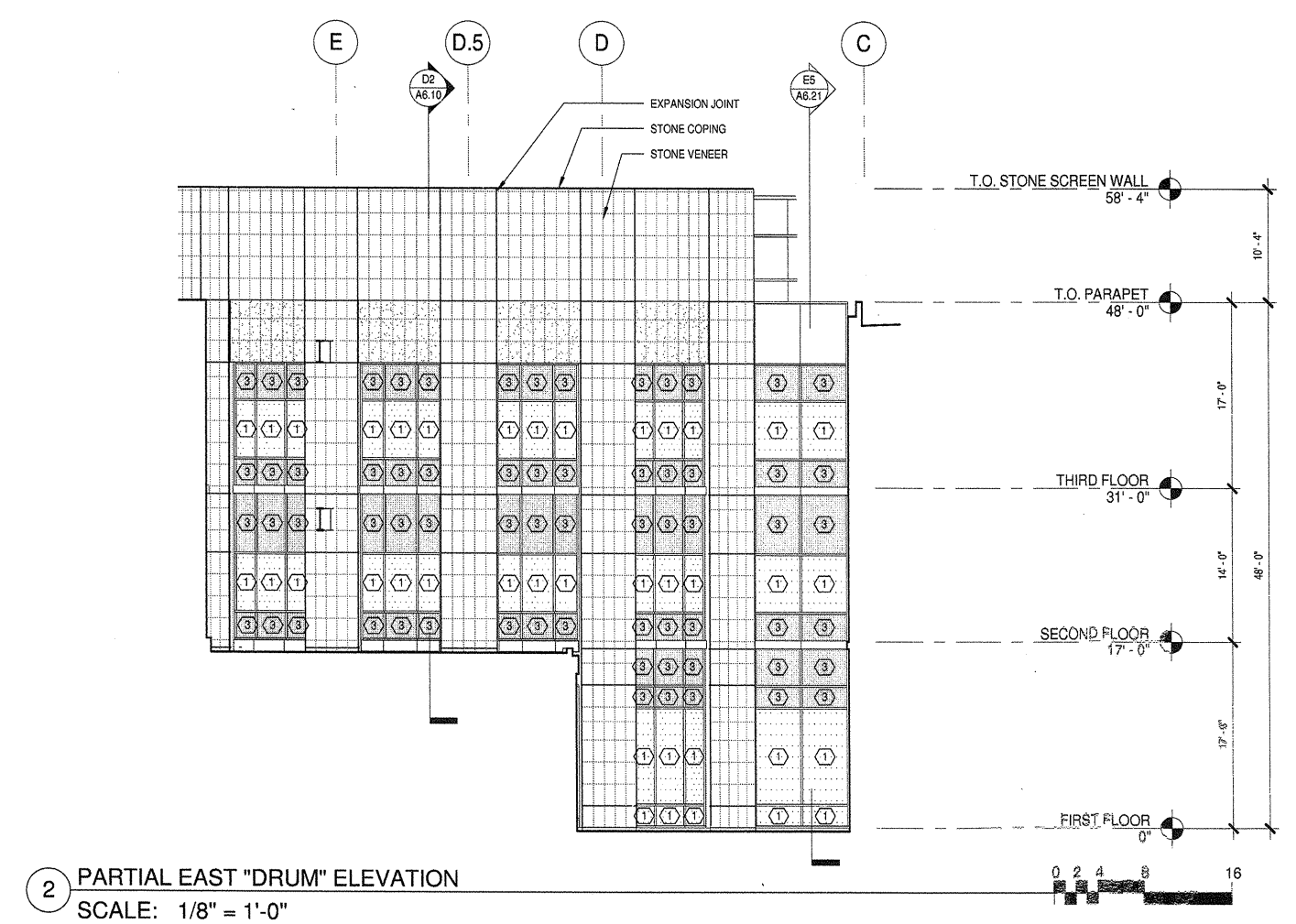
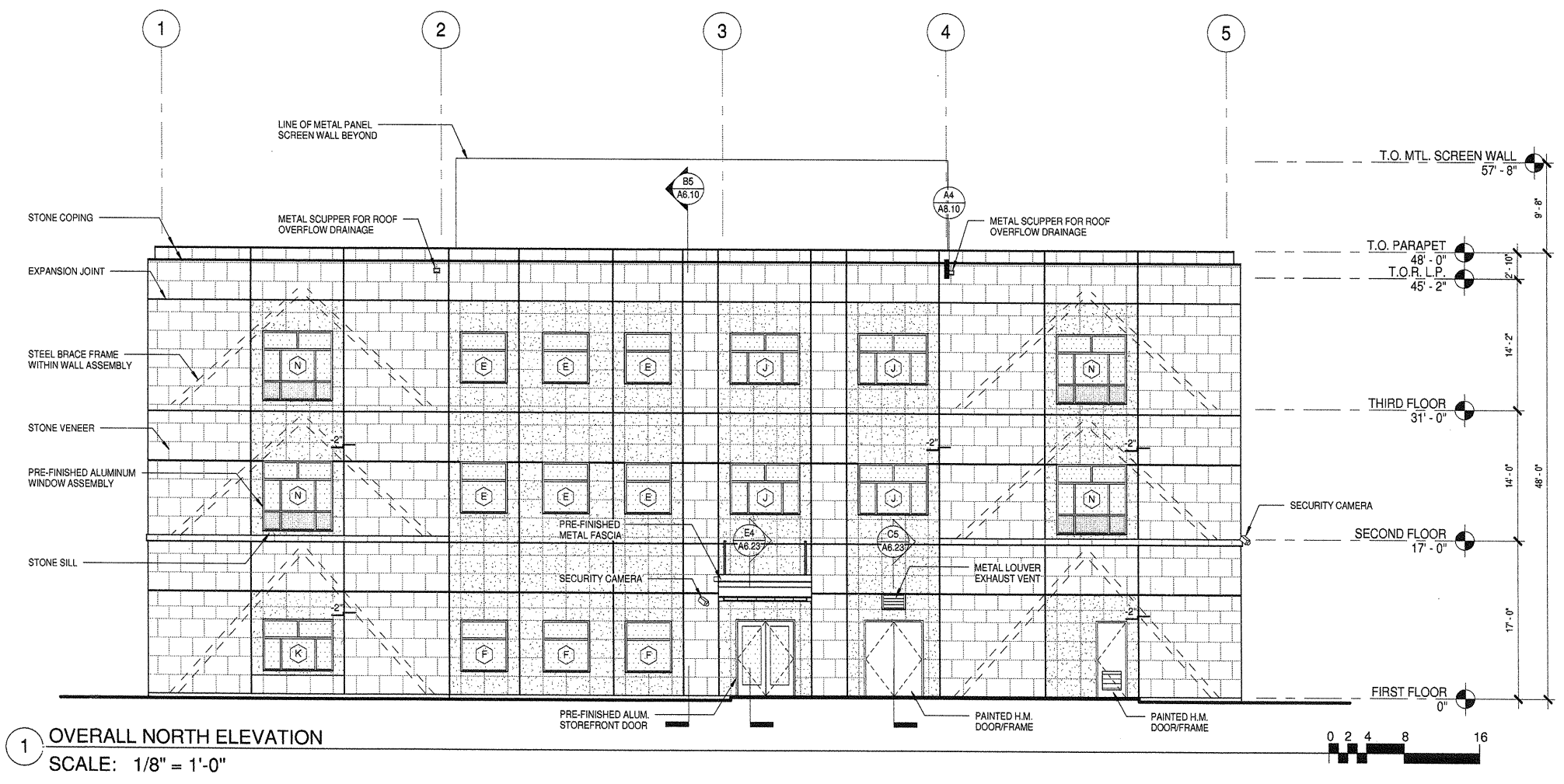
**carrierjohnson**  
architecture for urban environments  
1301 third avenue san diego ca 92101  
phone 619.239.2353 | fax 619.239.6227

**COURT OF APPEAL  
FOURTH APPELLATE DISTRICT  
DIVISION THREE  
SANTA ANA, CA**

ADMINISTRATIVE OFFICE  
OF THE COURTS  
OFFICE OF COURT CONSTRUCTION  
AND MANAGEMENT  
04-09-07 85% CD SUBMITTAL  
02-08-07 50% CD SUBMITTAL  
ISSUES

NOT FOR CONSTRUCTION

ALL IDEAS, DESIGN, ARRANGEMENTS AND PLANS INDICATED OR REPRESENTED BY THIS DRAWING ARE OWNED BY AND THE PROPERTY OF CARRIER JOHNSON AND WERE CREATED, DEVELOPED AND REVISED FOR USE ON AND IN CONNECTION WITH THIS PROJECT. NONE OF THESE IDEAS, DESIGN, ARRANGEMENTS, OR PLANS SHALL BE USED BY OR DISCLOSED TO ANY PERSON, FIRM, OR CORPORATION FOR ANY PURPOSE WHATSOEVER WITHOUT THE WRITTEN PERMISSION OF CARRIER JOHNSON. THESE DRAWINGS OR SPECIFICATIONS WITH ANY PHOTOGRAPHS, PANS OR PUBLICATIONS OF SOME KIND, OR ANY REPRODUCTION OR USE THEREOF IS PROHIBITED WITHOUT THE CONSENT OF CARRIER JOHNSON.



**EXT. ELEVATION GENERAL NOTES**

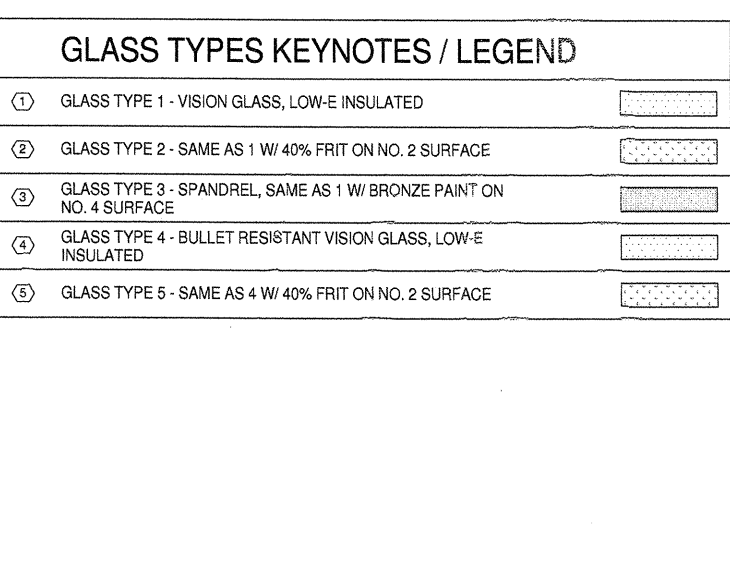
- ALL EXTERIOR STEEL AND MISCELLANEOUS METALS SHALL BE HOT DIP GALVANIZED AND PAINTED, U.O.N.
- PREMISES IDENTIFICATION: ADDRESS NUMERALS SHALL BE PLACED IN SUCH A POSITION AS TO BE PLAINLY VISIBLE AND LEGIBLE FROM THE STREET OR ROAD FRONTING THE PROPERTY. NUMBERS SHALL CONTRAST WITH THEIR BACKGROUND.
- PROVIDE TEMPERED SAFETY GLAZING AS FOLLOWS: (CBC SECTION 2406)
  - GLAZING IN DOORS
  - FIXED GLAZING WITHIN 24" OF DOORS
  - GLAZING ADJACENT TO A WALKING SURFACE WITH BOTTOM EDGE LESS THAN 18" AFF AND TOP EDGE GREATER THAN 36" AFF.
- AN INDIVIDUAL STONE VENEER TILE SHALL NOT HAVE A SURFACE AREA OVER 720 SQUARE INCHES.

**EXTERIOR MATERIAL LEGEND**

	STONE VENEER TYPE 1
	STONE VENEER TYPE 2
	STONE VENEER TYPE 3
	STONE VENEER TYPE 4

**GLASS TYPES KEYNOTES / LEGEND**

①	GLASS TYPE 1 - VISION GLASS, LOW-E INSULATED	
②	GLASS TYPE 2 - SAME AS 1 W/ 40% FRIT ON NO. 2 SURFACE	
③	GLASS TYPE 3 - SPANDREL, SAME AS 1 W/ BRONZE PAINT ON NO. 4 SURFACE	
④	GLASS TYPE 4 - BULLET RESISTANT VISION GLASS, LOW-E INSULATED	
⑤	GLASS TYPE 5 - SAME AS 4 W/ 40% FRIT ON NO. 2 SURFACE	



PROJECT NO:  
4610.10  
FILE NAME:  
P:\4610.10\Rev\4610 central.rvt  
DRAWN BY: CHECKED BY:  
PLOT DATE:  
TITLE:  
**EXTERIOR ELEVATIONS**  
DRAWING NO:  
**A6.2**

**carrierjohnson**  
architecture for urban environments  
1301 third avenue san diego ca 92101  
phone 619.239.2353 | fax 619.239.6227

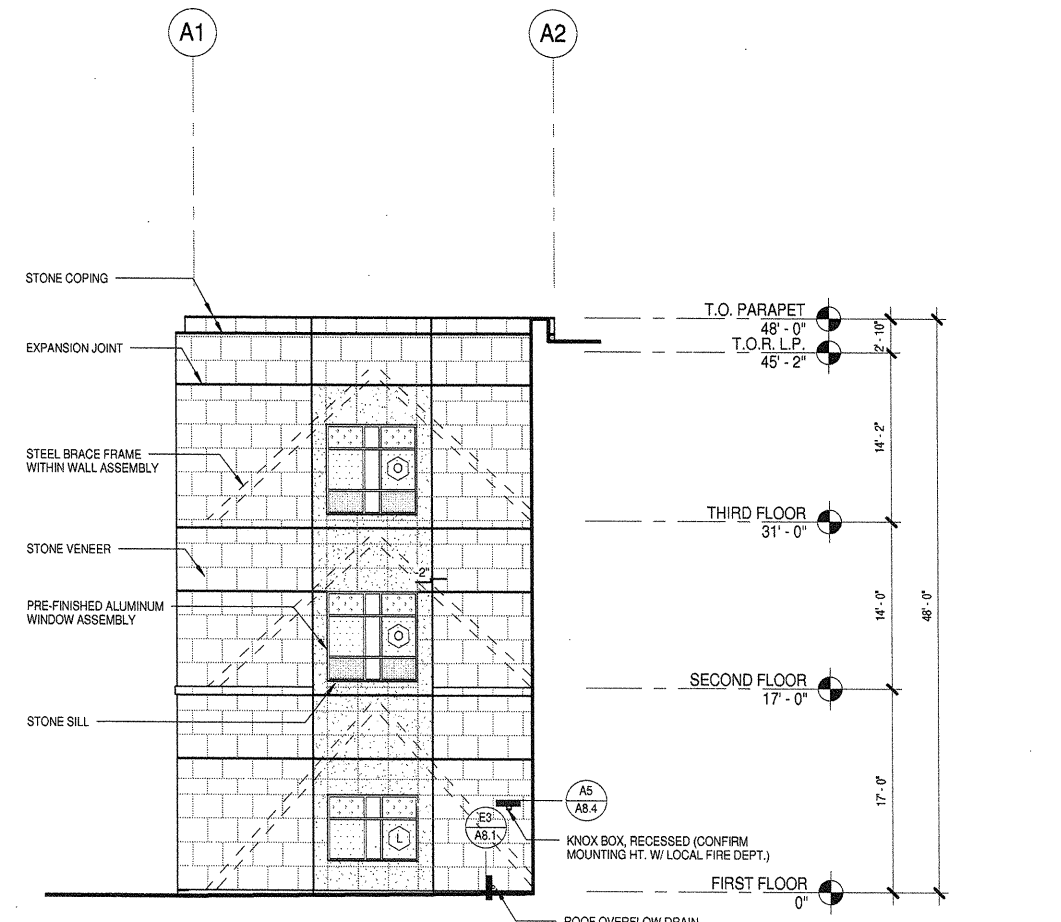
**COURT OF APPEAL  
FOURTH APPELLATE DISTRICT  
DIVISION THREE  
SANTA ANA, CA**

ADMINISTRATIVE OFFICE  
OF THE COURTS  
OFFICE OF COURT CONSTRUCTION  
AND MANAGEMENT

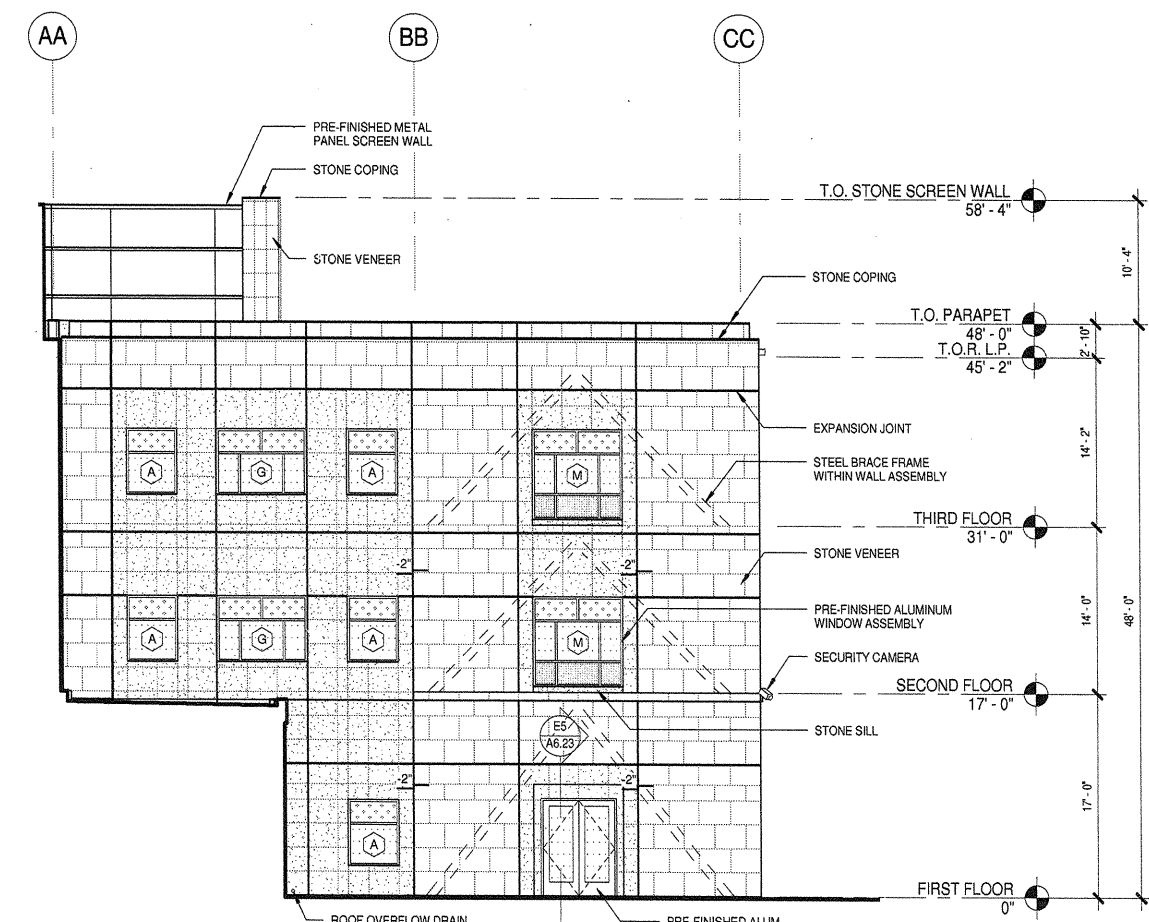
04-08-07 95% CD SUBMITTAL  
02-08-07 50% CD SUBMITTAL  
ISSUES:

NOT FOR CONSTRUCTION

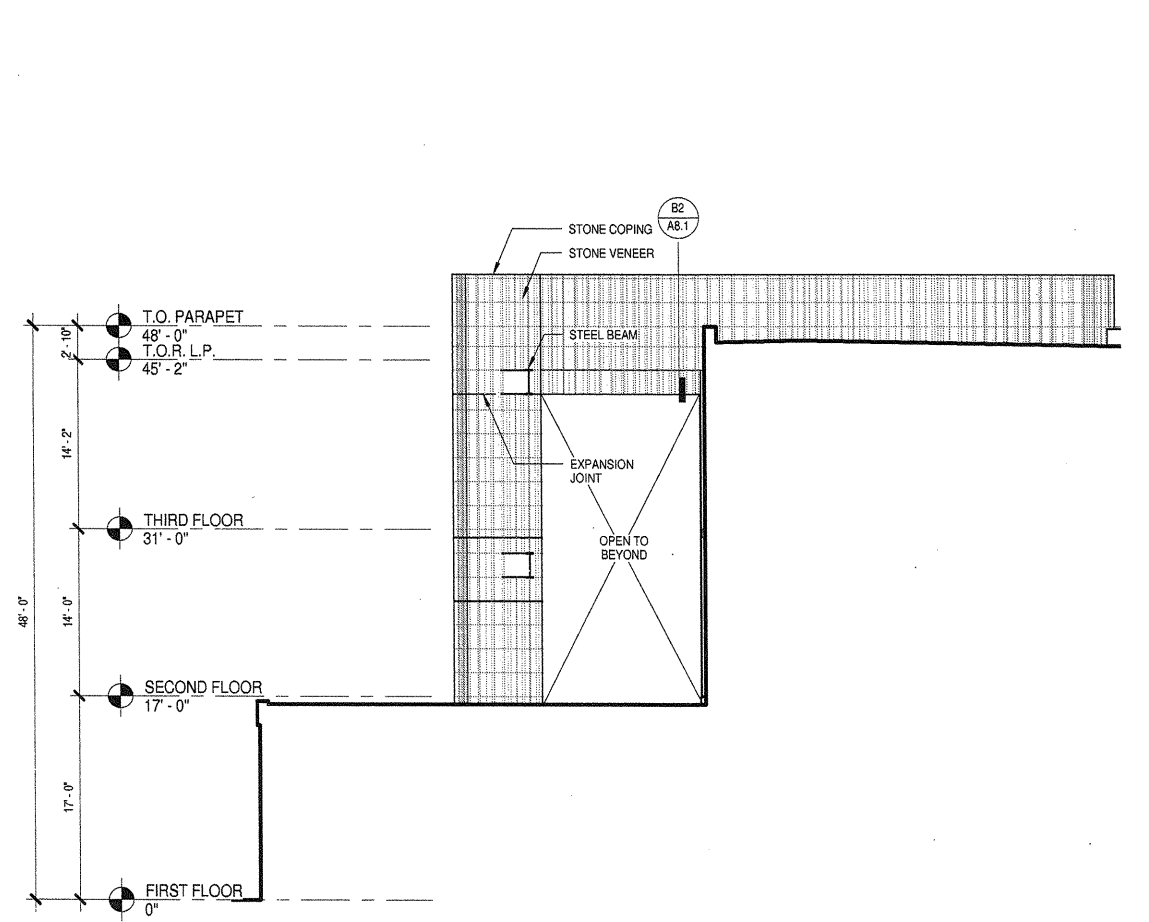
ALL IDEAS, DESIGN ARRANGEMENTS AND FINISHES INDICATED OR REPRESENTED BY THIS DRAWING ARE OWNED BY AND ARE THE PROPERTY OF CARRIER JOHNSON AND DEVELOPED FOR USE ON AND IN CONNECTION WITH THIS PROJECT. NONE OF SUCH IDEAS, DESIGN ARRANGEMENTS, OR FINISHES SHALL BE USED BY OR DISCLOSED TO ANY PERSON, FIRM, OR CORPORATION FOR ANY PURPOSE WHATSOEVER WITHOUT THE WRITTEN PERMISSION OF CARRIER JOHNSON. FEELING THESE DRAWINGS OR INFORMATION TO BE REPRODUCED OR USED IN ANY MANNER WITHOUT THE WRITTEN PERMISSION OF CARRIER JOHNSON.



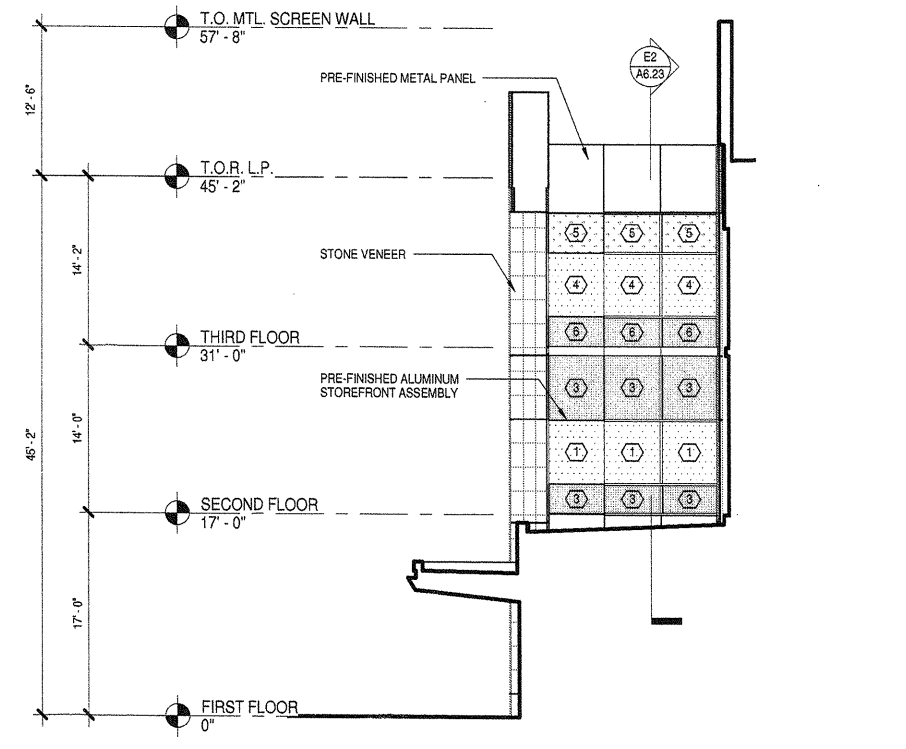
1 PARTIAL NORTHEAST ELEVATION  
SCALE: 1/8" = 1'-0"



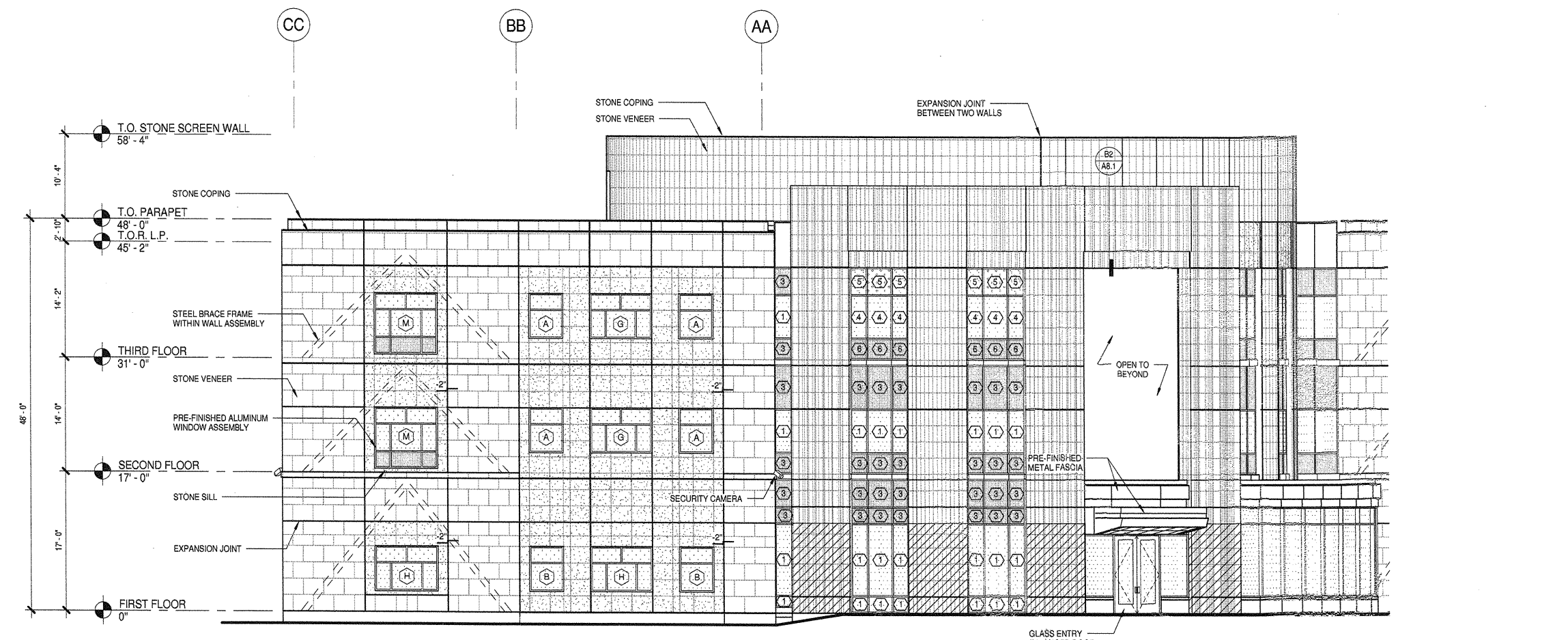
2 PARTIAL NORTHWEST ELEVATION  
SCALE: 1/8" = 1'-0"



3 PARTIAL SOUTHEAST "SHIELD" ELEVATION  
SCALE: 1/8" = 1'-0"



4 PARTIAL NORTH ELEVATION  
SCALE: 1/8" = 1'-0"



5 PARTIAL SOUTHEAST ELEVATION  
SCALE: 1/8" = 1'-0"

**EXT. ELEVATION GENERAL NOTES**

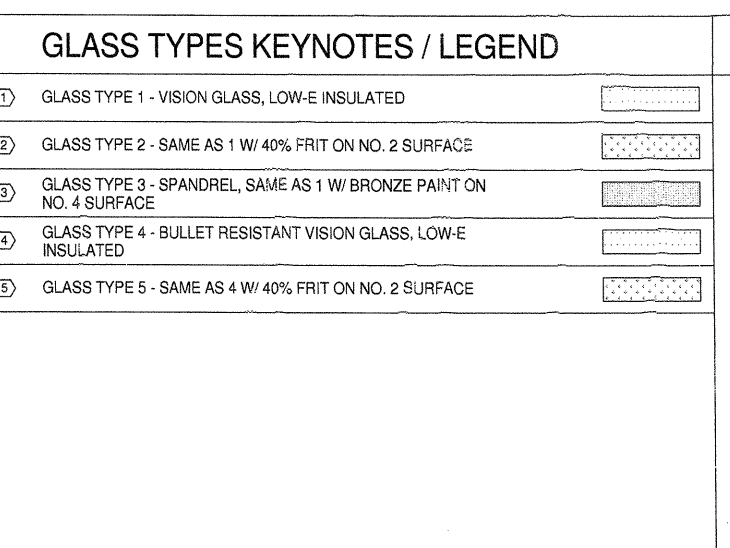
- ALL EXTERIOR STEEL AND MISCELLANEOUS METALS SHALL BE HOT DIP GALVANIZED AND PAINTED, U.O.N.
- PREMISES IDENTIFICATION: ADDRESS NUMERALS SHALL BE PLACED IN SUCH A POSITION AS TO BE PLAINLY VISIBLE AND LEGIBLE FROM THE STREET OR ROAD FRONTING THE PROPERTY. NUMBERS SHALL CONTRAST WITH THEIR BACKGROUND.
- PROVIDE TEMPERED SAFETY GLAZING AS FOLLOWS: (CBC SECTION 2406)
  - GLAZING IN DOORS
  - FIXED GLAZING WITHIN 24" OF DOORS
  - GLAZING ADJACENT TO A WALKING SURFACE WITH BOTTOM EDGE LESS THAN 18" AFF AND TOP EDGE GREATER THAN 38" AFF.
- AN INDIVIDUAL STONE VENEER TILE SHALL NOT HAVE A SURFACE AREA OVER 720 SQUARE INCHES.

**EXTERIOR MATERIAL LEGEND**

	STONE VENEER TYPE 1
	STONE VENEER TYPE 2
	STONE VENEER TYPE 3
	STONE VENEER TYPE 4

**GLASS TYPES KEYNOTES / LEGEND**

①	GLASS TYPE 1 - VISION GLASS, LOW-E INSULATED	
②	GLASS TYPE 2 - SAME AS 1 W/ 40% FRIT ON NO. 2 SURFACE	
③	GLASS TYPE 3 - SPANDREL, SAME AS 1 W/ BRONZE PAINT ON NO. 4 SURFACE	
④	GLASS TYPE 4 - BULLET RESISTANT VISION GLASS, LOW-E INSULATED	
⑤	GLASS TYPE 5 - SAME AS 4 W/ 40% FRIT ON NO. 2 SURFACE	



PROJECT NO: 4610.10  
 FILE NAME: P:\4610.10\Rev\4610 central.rvt  
 DRAWN BY: CHECKED BY:  
 PLOT DATE:  
 TITLE:  
**EXTERIOR ELEVATIONS**  
 DRAWING NO:

A6.3

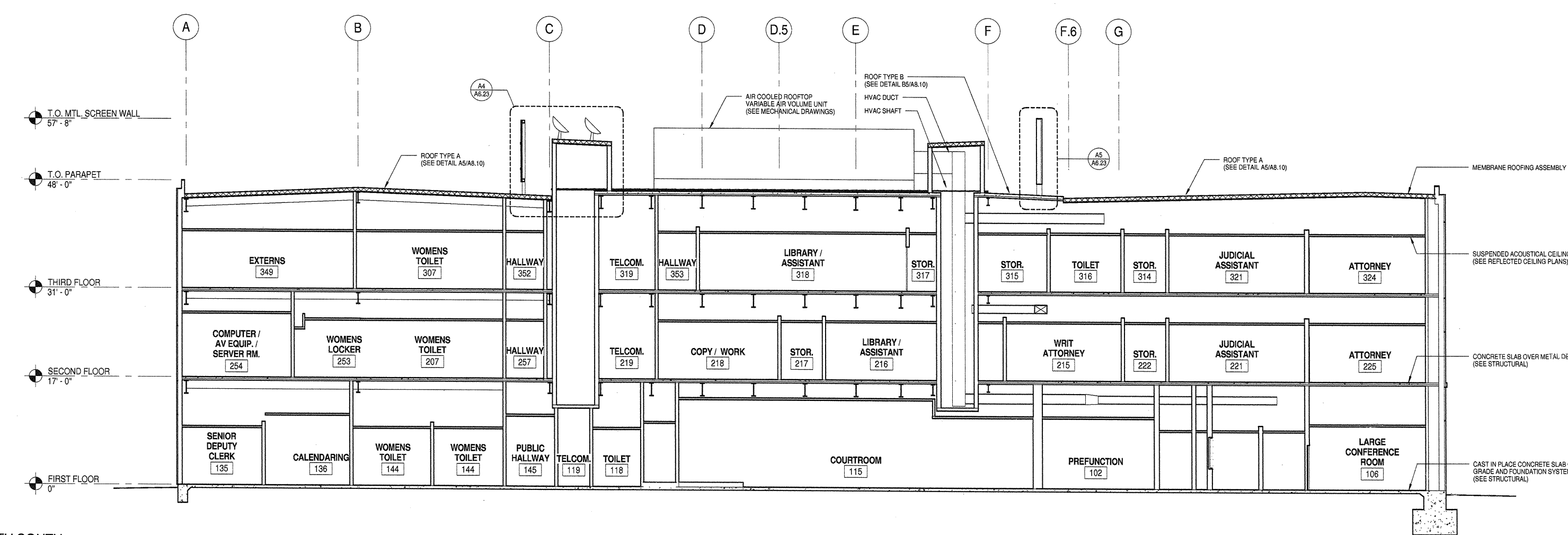
NOT FOR CONSTRUCTION

**carrierjohnson**  
 architecture for urban environments  
 1301 third avenue san diego ca 92101  
 phone 619.239.2353 | fax 619.239.6227

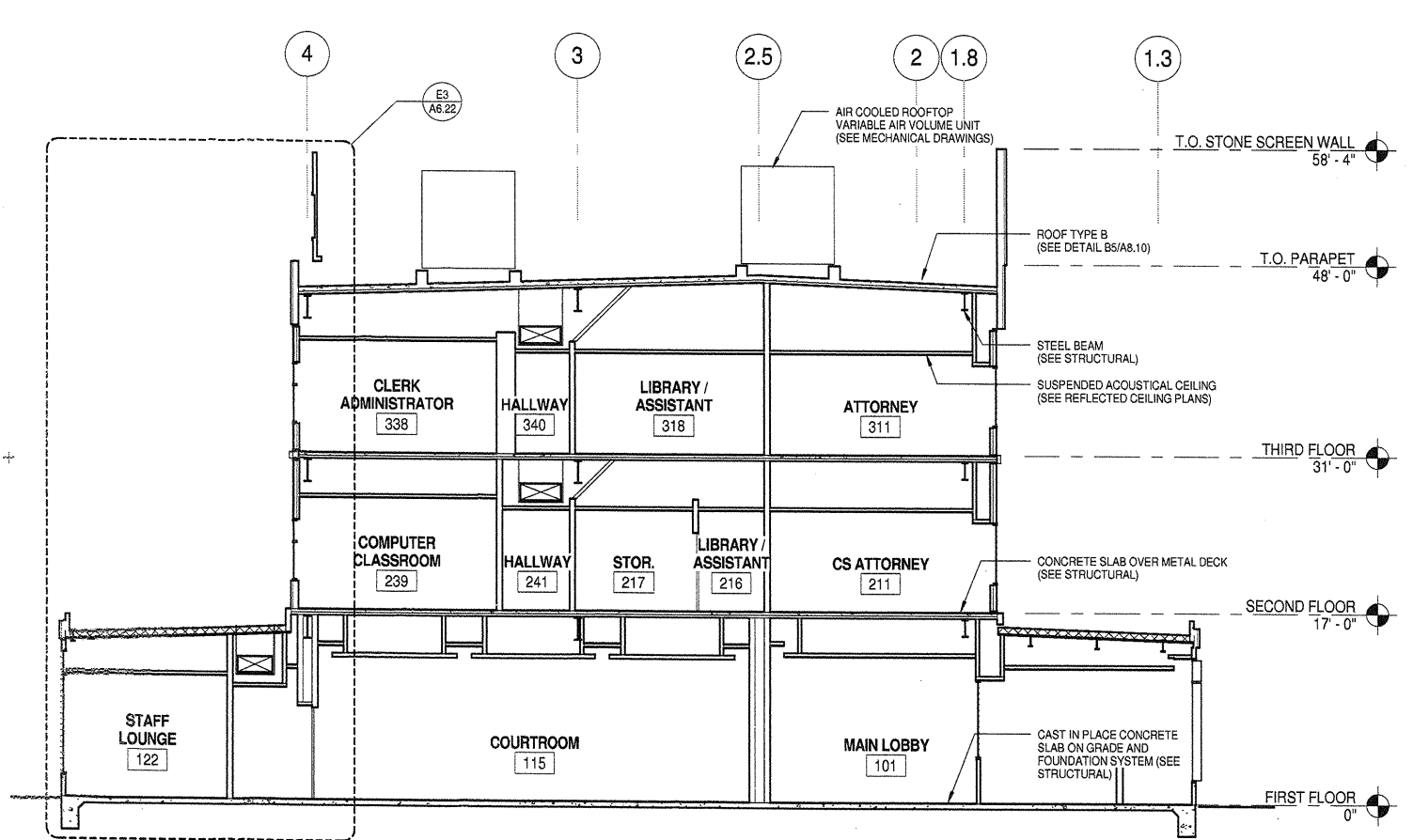
**COURT OF APPEAL  
 FOURTH APPELLATE DISTRICT  
 DIVISION THREE  
 SANTA ANA, CA**

ADMINISTRATIVE OFFICE  
 OF THE COURTS  
 OFFICE OF COURT CONSTRUCTION  
 AND MANAGEMENT

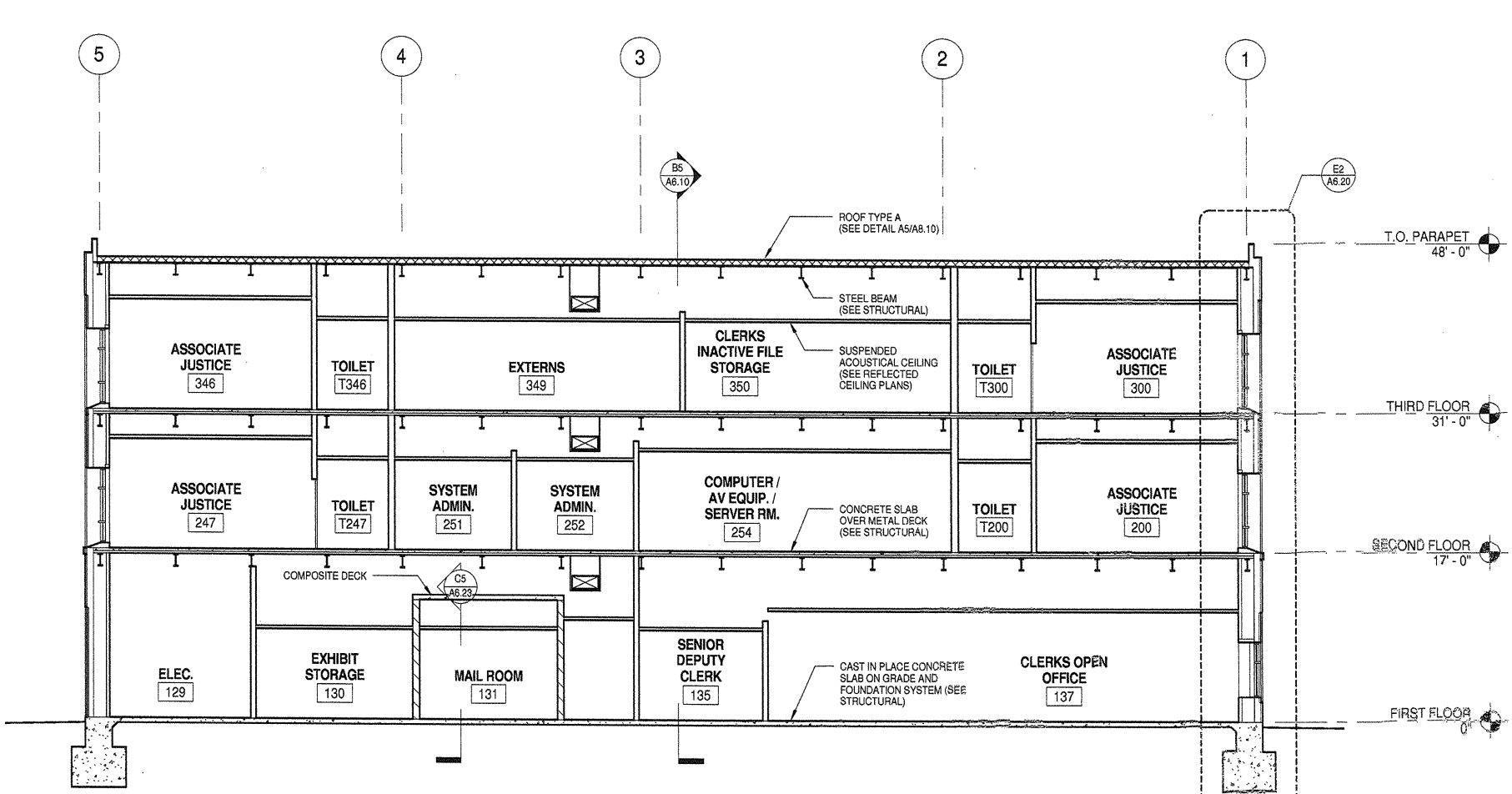
04-09-07 85% CD SUBMITTAL  
 02-09-07 50% CD SUBMITTAL  
 ISSUES:



**BUILDING SECTION - NORTH SOUTH**  
 SCALE: 1/8" = 1'-0"



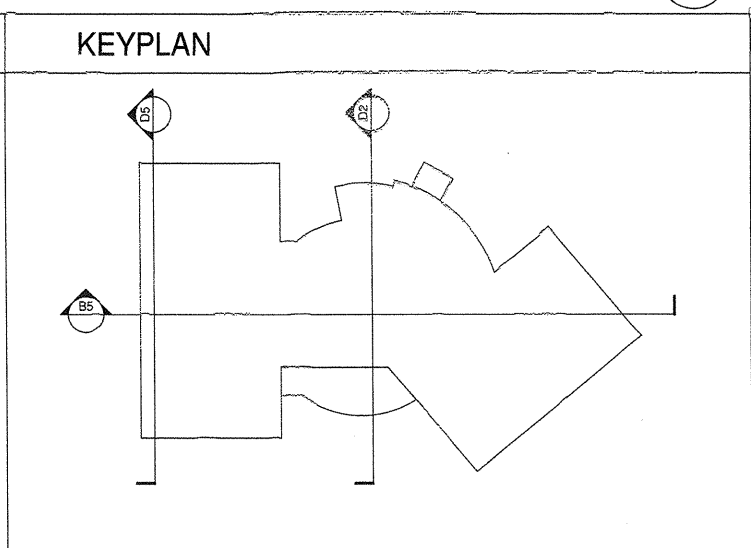
**BUILDING SECTION - EAST WEST**  
 SCALE: 1/8" = 1'-0"



**BUILDING SECTION THROUGH NORTH WING**  
 SCALE: 1/8" = 1'-0"

**BLDG. SECTION GENERAL NOTES**

- CONTRACTOR SHALL PROVIDE THE FOLLOWING R-VALUES AT WALLS AND ROOF CONSTRUCTION AT CONDITIONED SPACES, ROOFS: R-30, WALLS: R-22
- ALL EXTERIOR JOINTS AND OPENINGS IN THE BUILDING ENVELOPE THAT ARE OBSERVABLE SOURCES OF AIR LEAKAGE SHALL BE CAULKED, GASKETED, WEATHERSTRIPPED, OR OTHERWISE SEALED.
- PROVIDE TEMPERED SAFETY GLAZING AS FOLLOWS: (CBC SECTION 2406)
  - A. GLAZING IN DOORS
  - B. FIXED GLAZING WITHIN 24" OF DOORS
  - C. GLAZING ADJACENT TO A WALKING SURFACE WITH BOTTOM EDGE LESS THAN 18" AFF AND TOP EDGE GREATER THAN 36" AFF.

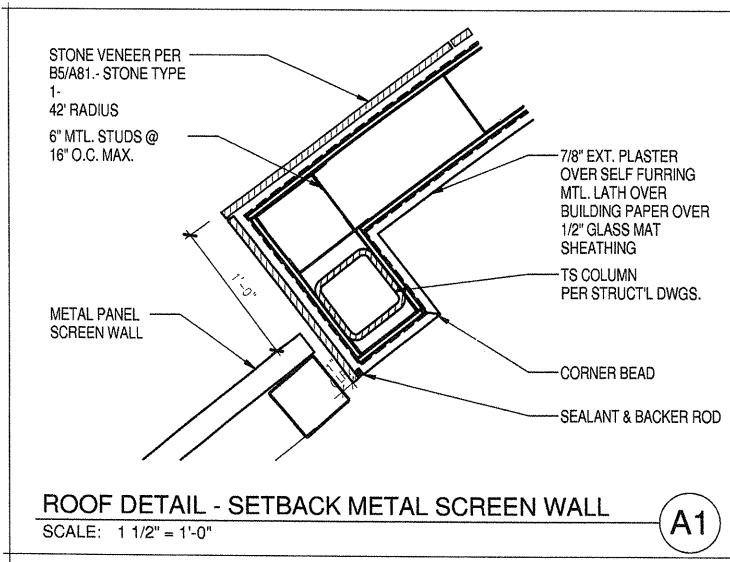


PROJECT NO:  
 4610.10  
 FILE NAME:  
 P:\4610.10\Revit\4610 central.rvt  
 DRAWN BY: CHECKED BY:  
 PLOT DATE:  
 TITLE:  
**BUILDING SECTIONS**  
 DRAWING NO:  
**A6.10**

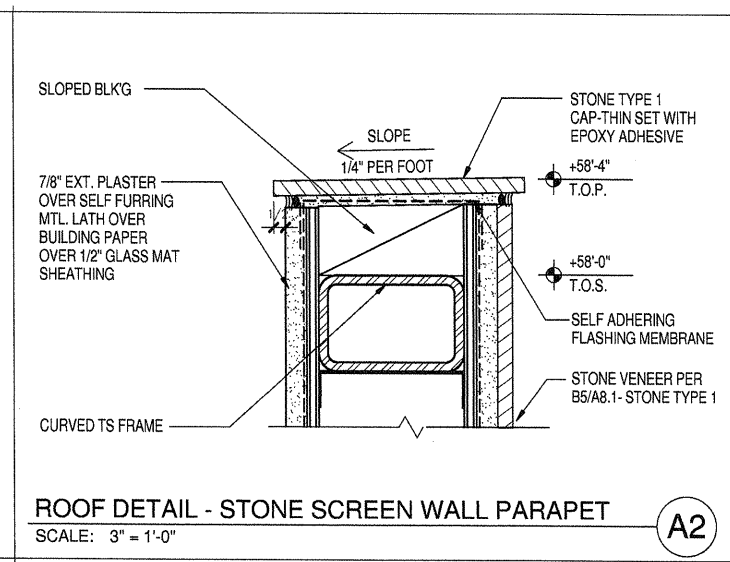
NOT FOR CONSTRUCTION

ALL IDEAS, DESIGN, ARRANGEMENTS AND PLANS INDICATED OR REPRESENTED BY THIS DRAWING ARE OWNED BY, AND THE PROPERTY OF, CARRIER JOHNSON AND WERE CREATED, DEVELOPED AND DEVELOPED FOR USE ON, AND IN CONNECTION WITH THIS PROJECT. NONE OF SUCH IDEAS, DESIGN ARRANGEMENTS, OR PLANS SHALL BE USED BY, OR DISCLOSED TO, ANY PERSON, FIRM, OR CORPORATION FOR ANY PURPOSE WHATSOEVER WITHOUT THE WRITTEN PERMISSION OF CARRIER JOHNSON. THESE DRAWINGS OR PORTIONS THEREOF ARE NOT TO BE REPRODUCED OR USED IN ANY MANNER WITHOUT THE WRITTEN PERMISSION OF CARRIER JOHNSON.

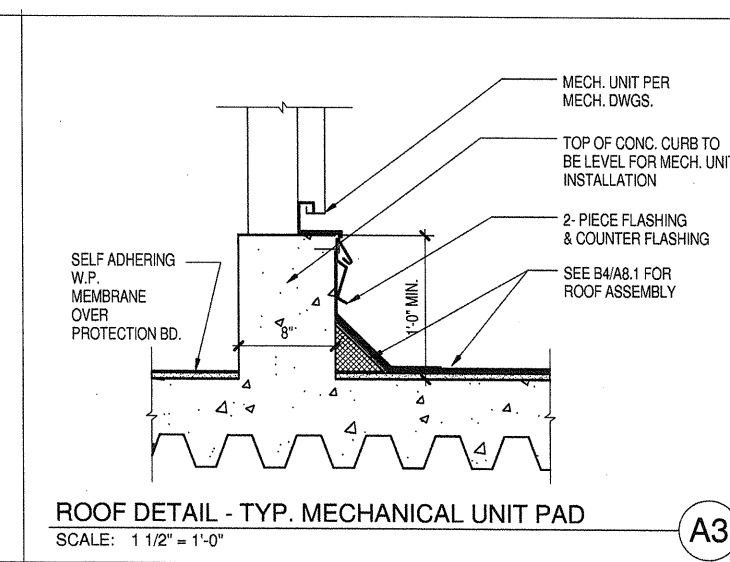
ALL IDEAS, DESIGN ARRANGEMENTS AND PLANS INDICATED OR REPRESENTED BY THIS DRAWING ARE OWNED BY AND THE PROPERTY OF CARRIERJOHNSON. ANY REUSE, REPRODUCTION OR MODIFICATION OF THIS DRAWING WITHOUT THE WRITTEN PERMISSION OF CARRIERJOHNSON IS STRICTLY PROHIBITED. THIS DRAWING IS THE PROPERTY OF CARRIERJOHNSON AND IS NOT TO BE REPRODUCED OR TRANSMITTED IN ANY FORM OR BY ANY MEANS, ELECTRONIC OR MECHANICAL, INCLUDING PHOTOCOPYING, RECORDING, OR BY ANY INFORMATION STORAGE AND RETRIEVAL SYSTEM, WITHOUT THE WRITTEN PERMISSION OF CARRIERJOHNSON.



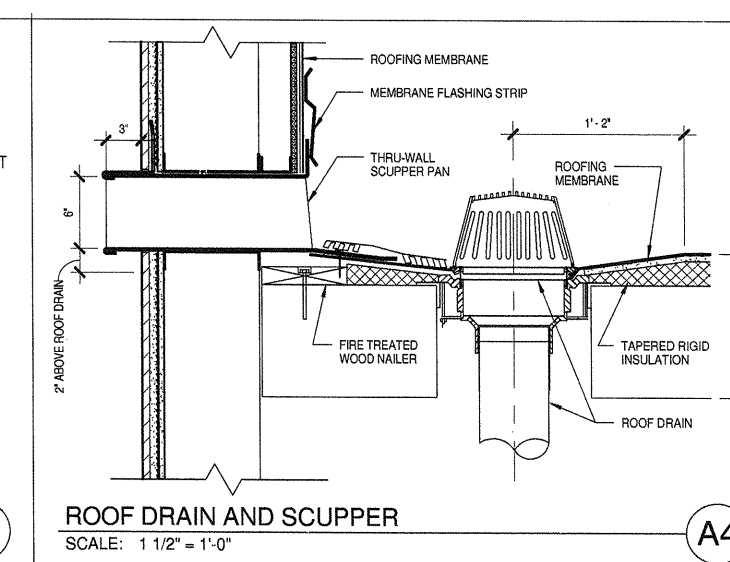
**ROOF DETAIL - SETBACK METAL SCREEN WALL**  
SCALE: 1 1/2" = 1'-0"  
**A1**



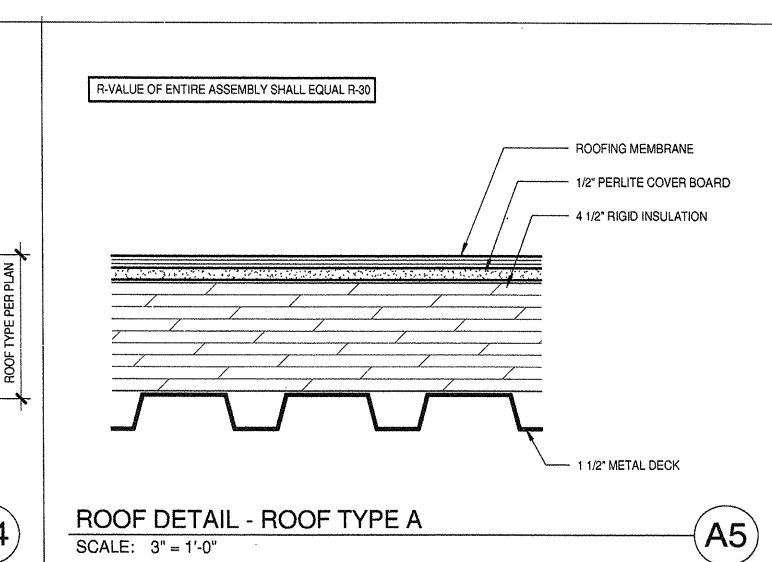
**ROOF DETAIL - STONE SCREEN WALL PARAPET**  
SCALE: 3" = 1'-0"  
**A2**



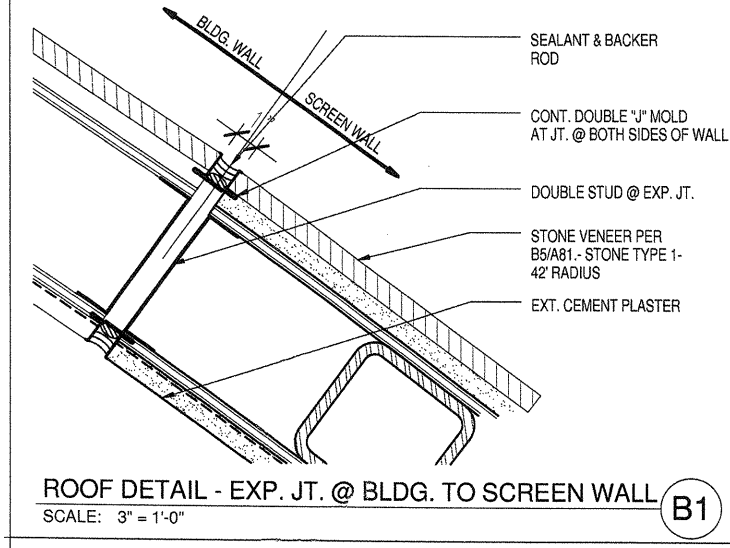
**ROOF DETAIL - TYP. MECHANICAL UNIT PAD**  
SCALE: 1 1/2" = 1'-0"  
**A3**



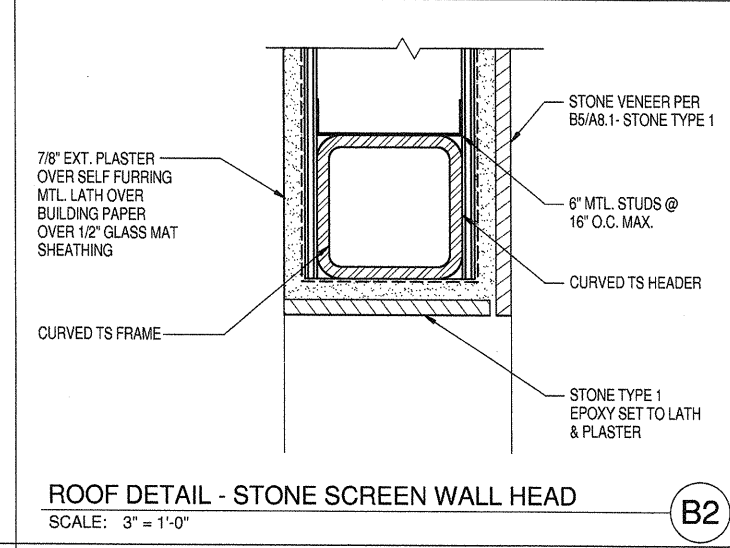
**ROOF DRAIN AND SCUPPER**  
SCALE: 1 1/2" = 1'-0"  
**A4**



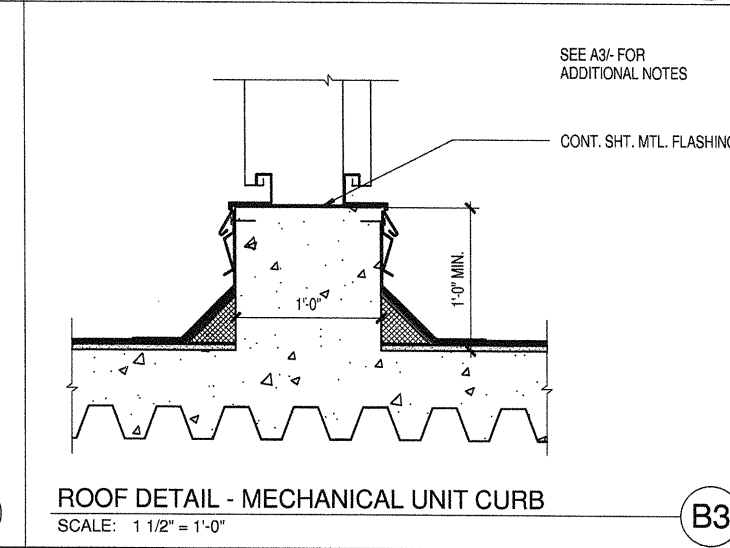
**ROOF DETAIL - ROOF TYPE A**  
SCALE: 3" = 1'-0"  
**A5**



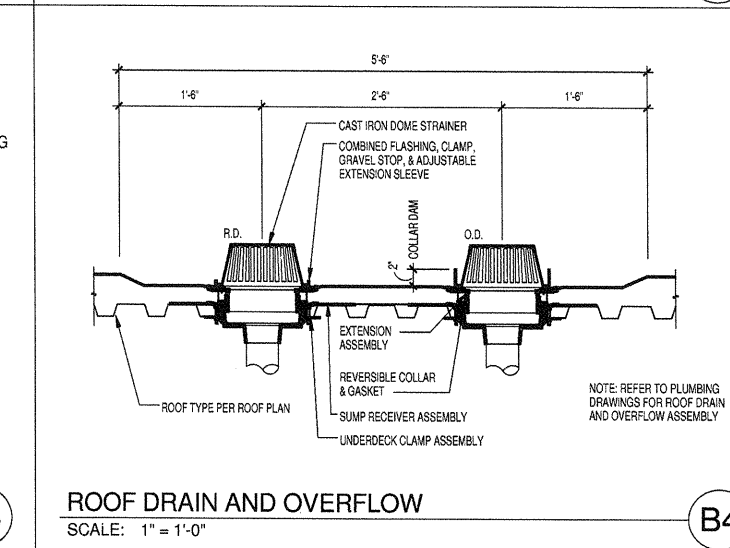
**ROOF DETAIL - EXP. JT. @ BLDG. TO SCREEN WALL**  
SCALE: 3" = 1'-0"  
**B1**



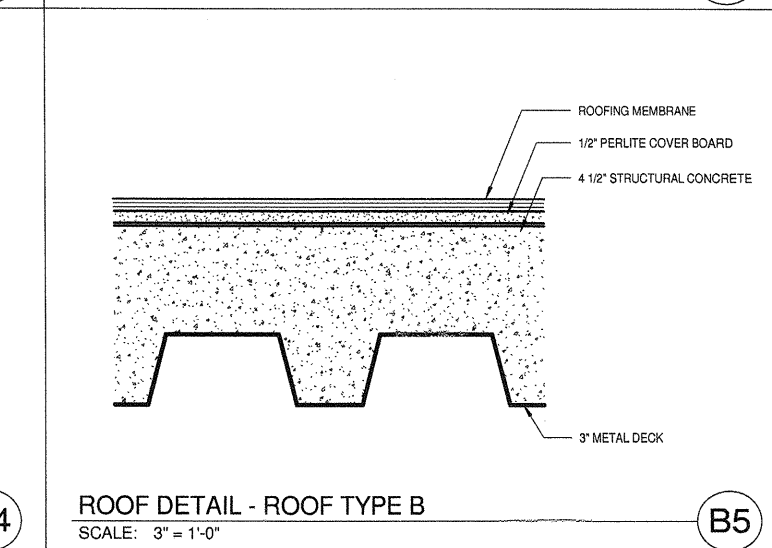
**ROOF DETAIL - STONE SCREEN WALL HEAD**  
SCALE: 3" = 1'-0"  
**B2**



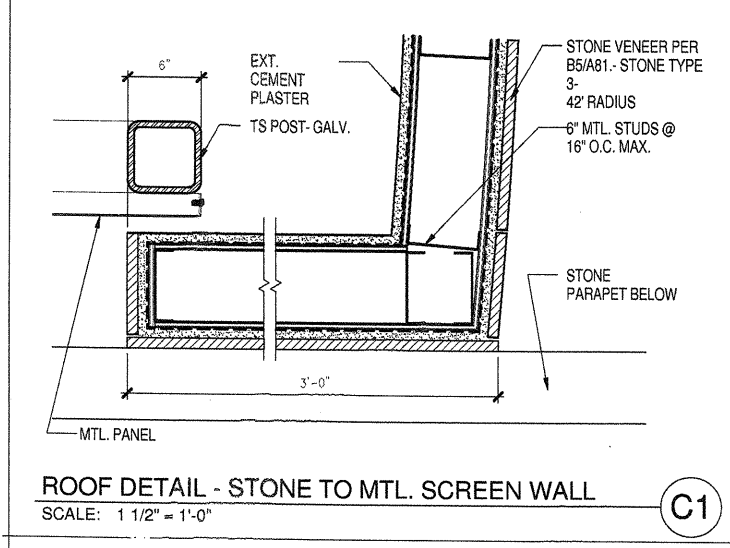
**ROOF DETAIL - MECHANICAL UNIT CURB**  
SCALE: 1 1/2" = 1'-0"  
**B3**



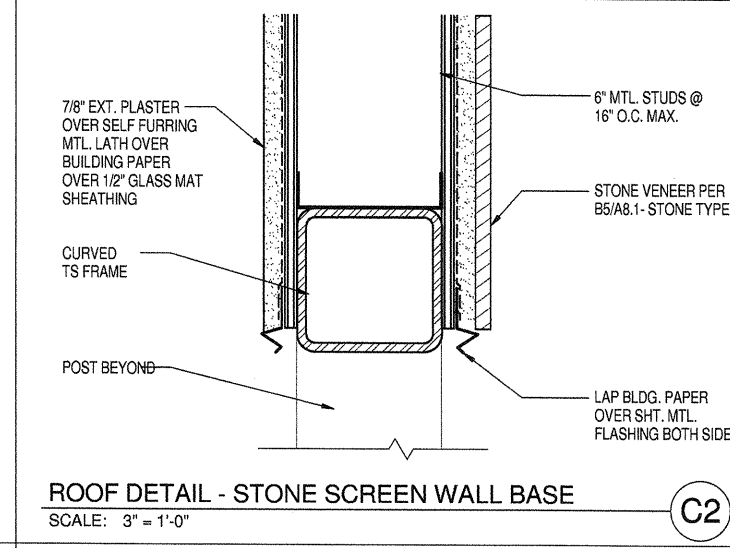
**ROOF DRAIN AND OVERFLOW**  
SCALE: 1" = 1'-0"  
**B4**



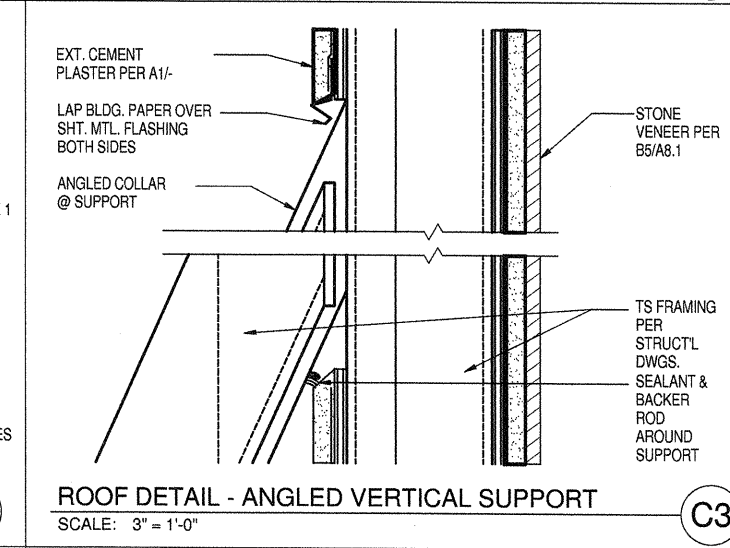
**ROOF DETAIL - ROOF TYPE B**  
SCALE: 3" = 1'-0"  
**B5**



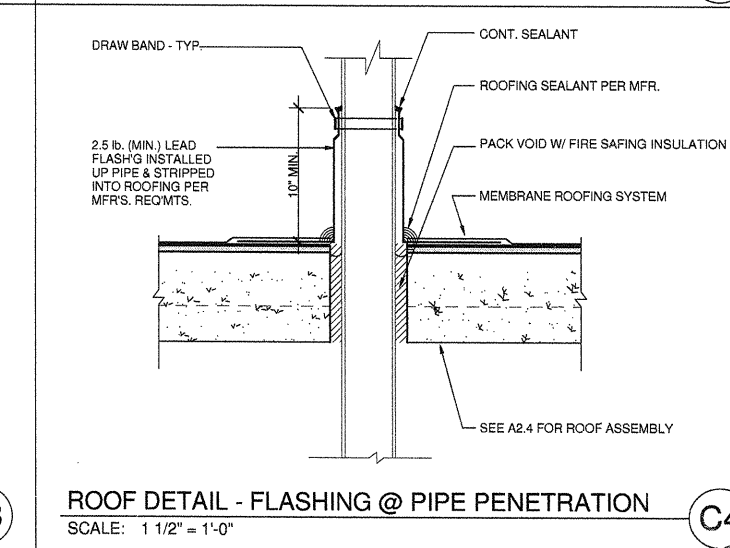
**ROOF DETAIL - STONE TO MTL. SCREEN WALL**  
SCALE: 1 1/2" = 1'-0"  
**C1**



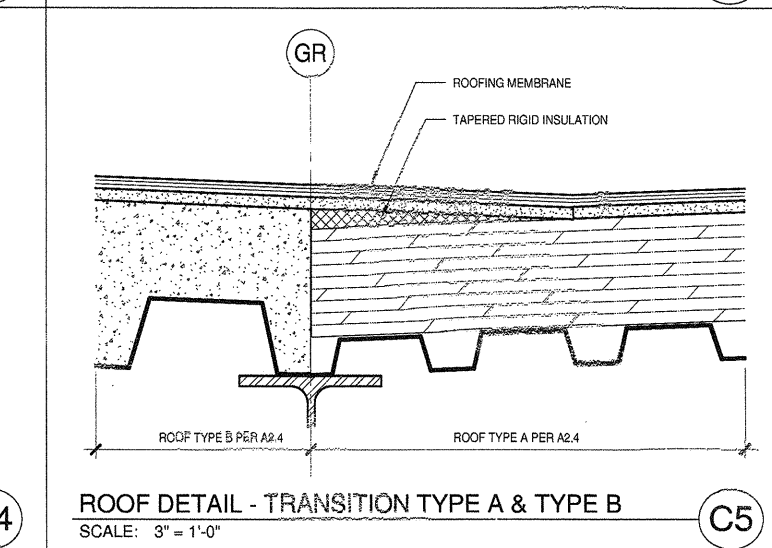
**ROOF DETAIL - STONE SCREEN WALL BASE**  
SCALE: 3" = 1'-0"  
**C2**



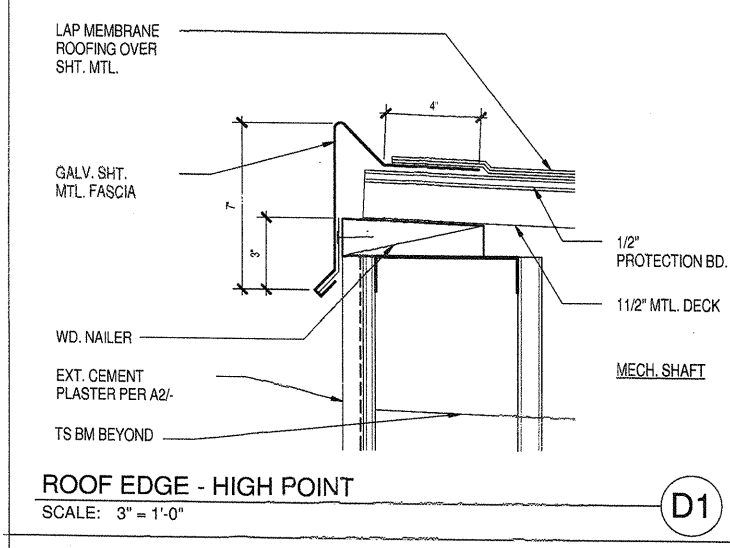
**ROOF DETAIL - ANGLED VERTICAL SUPPORT**  
SCALE: 3" = 1'-0"  
**C3**



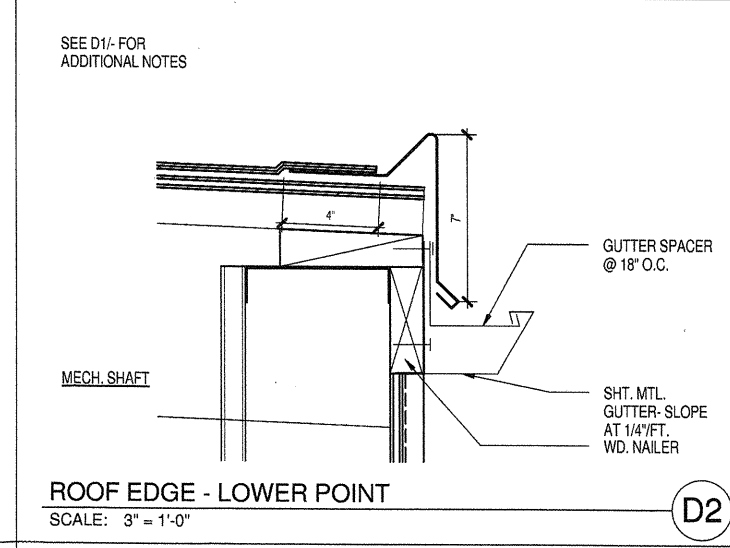
**ROOF DETAIL - FLASHING @ PIPE PENETRATION**  
SCALE: 1 1/2" = 1'-0"  
**C4**



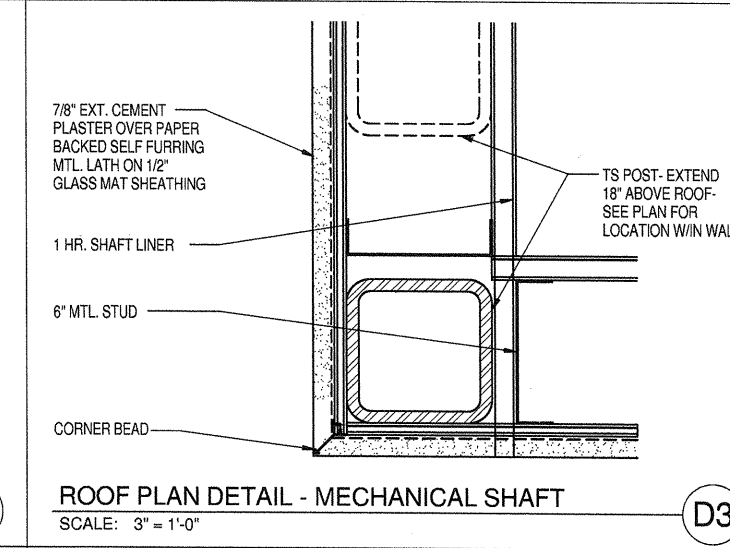
**ROOF DETAIL - TRANSITION TYPE A & TYPE B**  
SCALE: 3" = 1'-0"  
**C5**



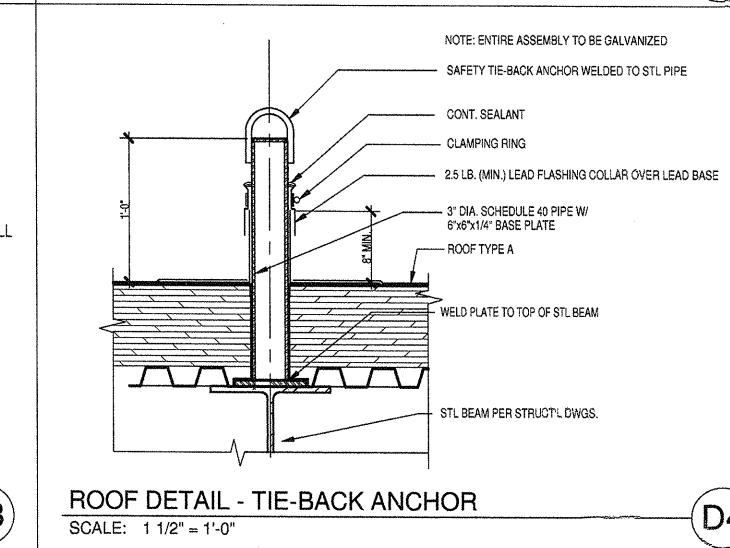
**ROOF EDGE - HIGH POINT**  
SCALE: 3" = 1'-0"  
**D1**



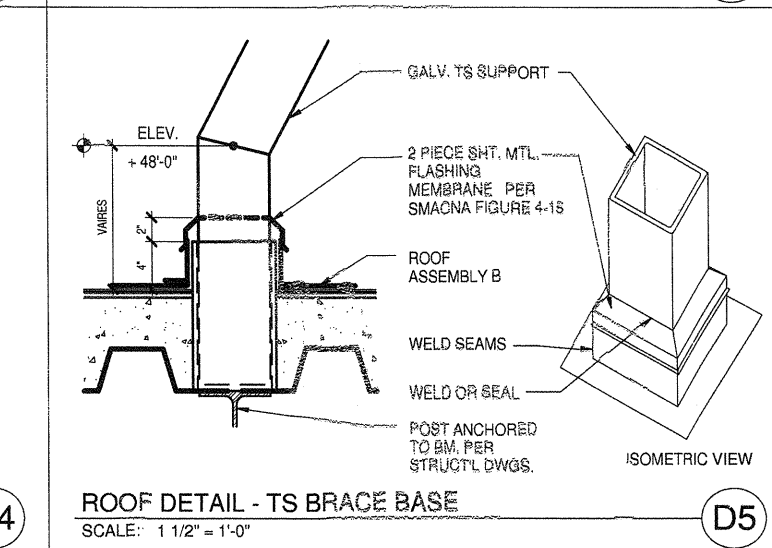
**ROOF EDGE - LOWER POINT**  
SCALE: 3" = 1'-0"  
**D2**



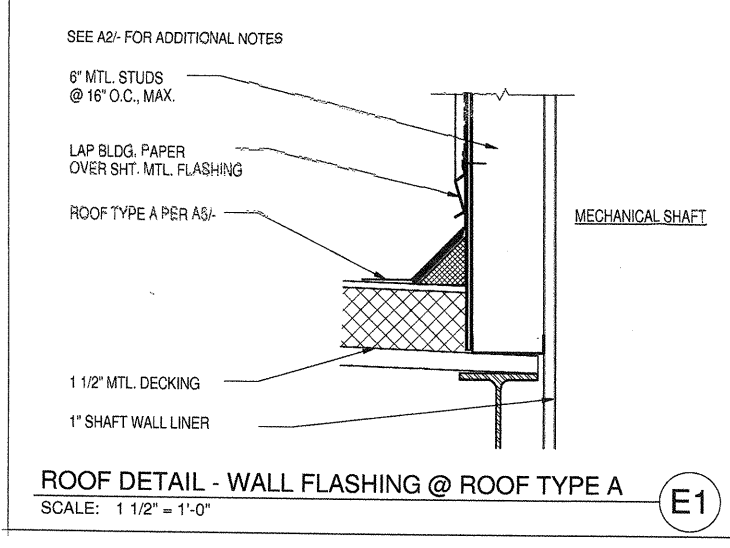
**ROOF PLAN DETAIL - MECHANICAL SHAFT**  
SCALE: 3" = 1'-0"  
**D3**



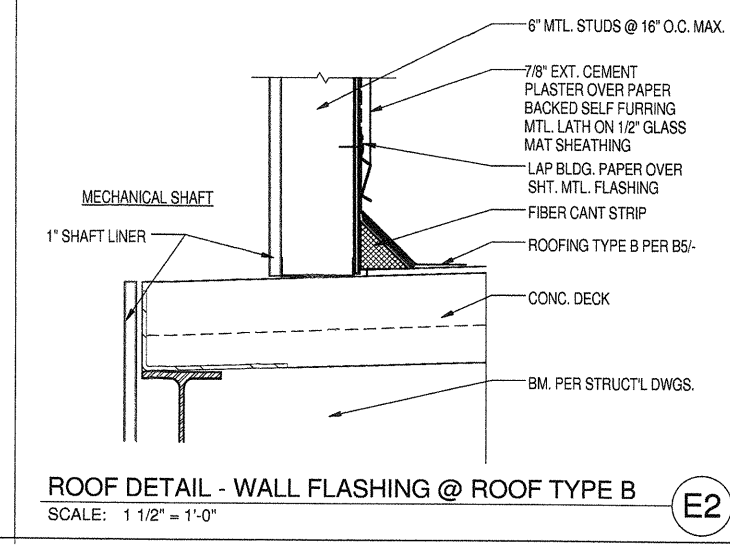
**ROOF DETAIL - TIE-BACK ANCHOR**  
SCALE: 1 1/2" = 1'-0"  
**D4**



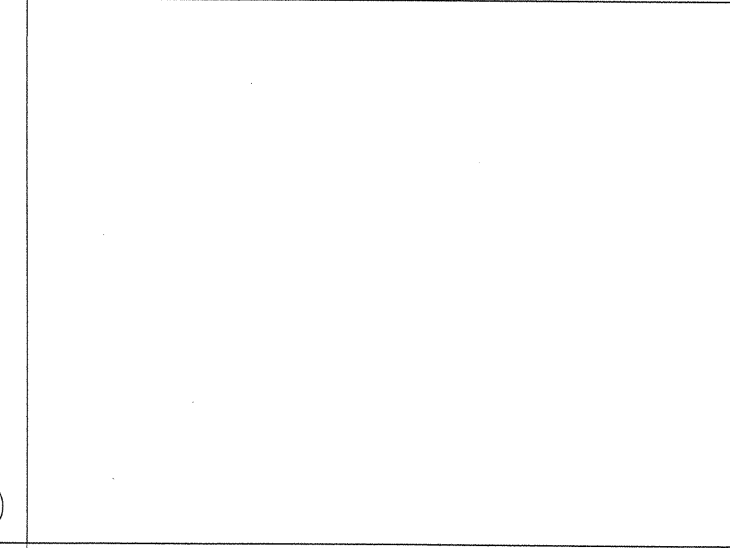
**ROOF DETAIL - TS BRACE BASE**  
SCALE: 1 1/2" = 1'-0"  
**D5**



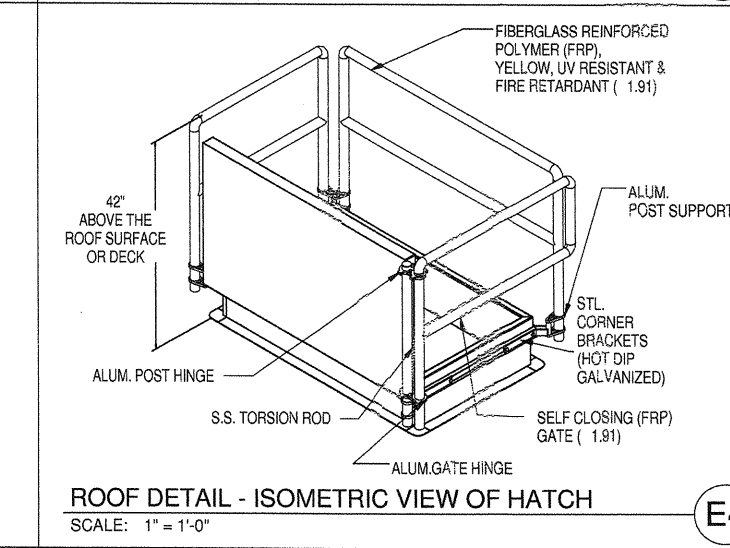
**ROOF DETAIL - WALL FLASHING @ ROOF TYPE A**  
SCALE: 1 1/2" = 1'-0"  
**E1**



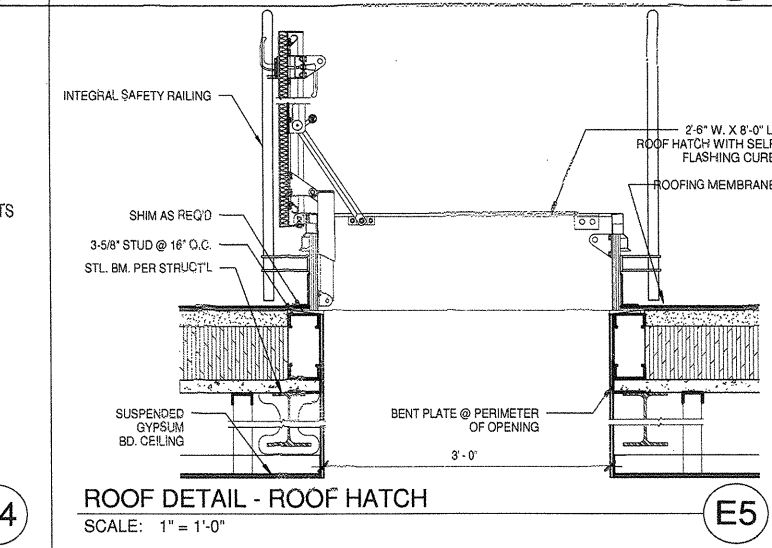
**ROOF DETAIL - WALL FLASHING @ ROOF TYPE B**  
SCALE: 1 1/2" = 1'-0"  
**E2**



**ROOF DETAIL - MECHANICAL SHAFT**  
SCALE: 3" = 1'-0"  
**E3**



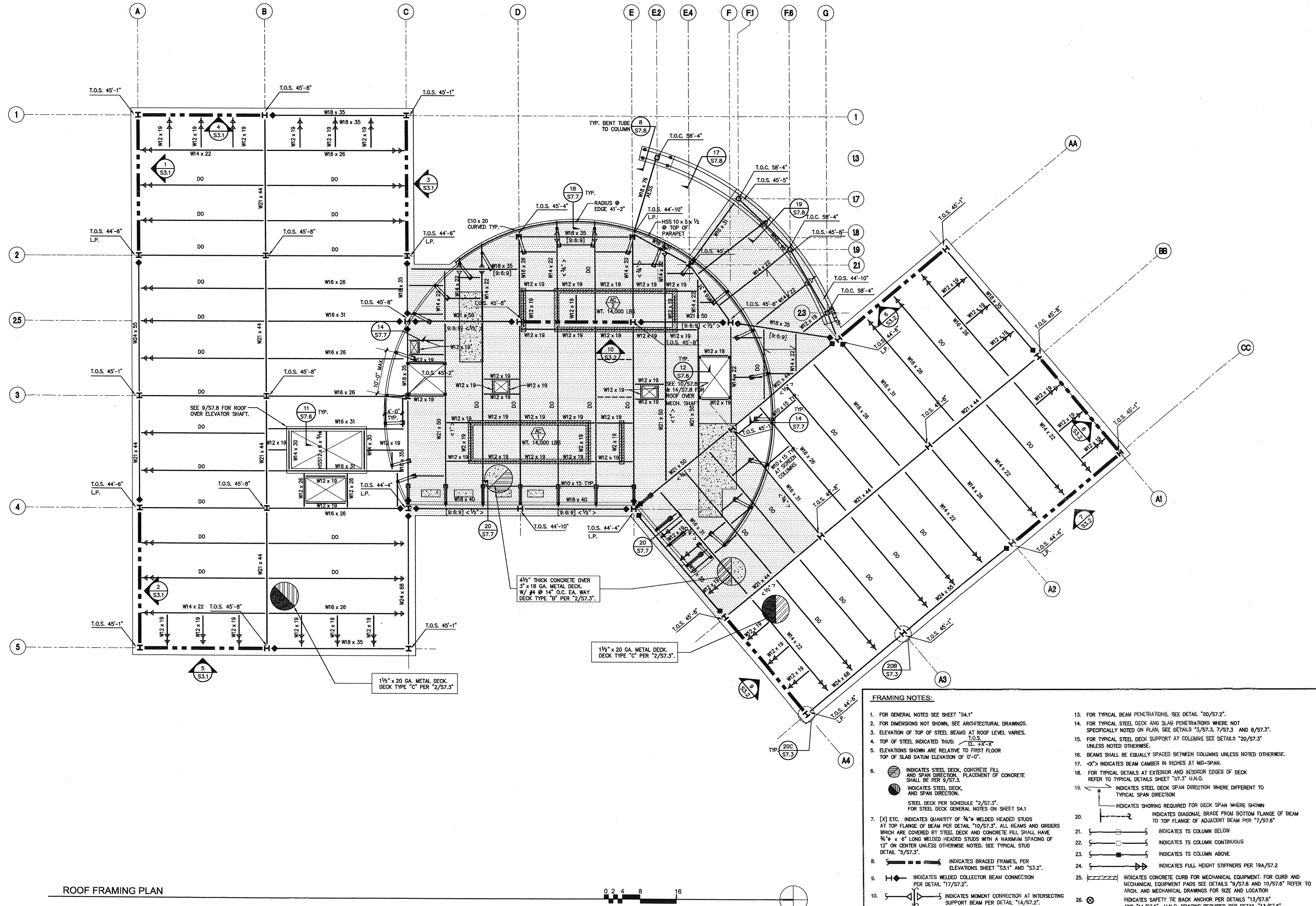
**ROOF DETAIL - ISOMETRIC VIEW OF HATCH**  
SCALE: 1" = 1'-0"  
**E4**



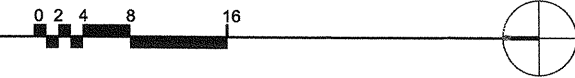
**ROOF DETAIL - ROOF HATCH**  
SCALE: 1" = 1'-0"  
**E5**

**carrierjohnson**  
 architecture for urban environments  
 1301 third avenue san diego ca 92101  
 phone 619.239.2353 | fax 619.239.6227  
  
**COURT OF APPEAL**  
**FOURTH APPELLATE DISTRICT**  
**DIVISION THREE**  
 SANTA ANA, CA  
  
 ADMINISTRATIVE OFFICE  
 OF THE COURTS  
 OFFICE OF COURT CONSTRUCTION  
 AND MANAGEMENT  
 04-09-07 95% CD SUBMITTAL  
 02-08-07 85% CD SUBMITTAL  
 ISSUES:  
 PROJECT NO:  
 4610.10  
 FILE NAME:  
 P:\4610.10\Rev\4610 central.rvt  
 DRAWN BY: CHECKED BY:  
 PLOT DATE:  
 TITLE:  
**ROOF DETAILS**  
 DRAWING NO:  
**A8.10**  
**NOT FOR CONSTRUCTION**

ALL IDEAS, DESIGN, ARRANGEMENTS AND PLANS INDICATED OR REPRESENTED BY THIS DRAWING ARE OWNED BY, AND THE PROPERTY OF, CARRIER JOHNSON AND WERE CREATED, EVOLVED AND DEVELOPED FOR USE ON, AND IN CONNECTION WITH THIS PROJECT. NONE OF SUCH IDEAS, DESIGN, ARRANGEMENTS OR PLANS SHALL BE USED BY, OR DISCLOSED TO ANY PERSON, FIRM, OR CORPORATION FOR ANY PURPOSE WHATSOEVER WITHOUT THE WRITTEN PERMISSION OF CARRIER JOHNSON. FILING THESE DRAWINGS OR SPECIFICATIONS WITH ANY PUBLIC AGENCY IS NOT A PUBLICATION OF SAME. NO COPYING, REPRODUCTION OR USE THEREOF IS PERMISSIBLE WITHOUT THE CONSENT OF CARRIER JOHNSON.



ROOF FRAMING PLAN



- FRAMING NOTES:**
- FOR GENERAL NOTES SEE SHEET "S4.1"
  - FOR DIMENSIONS NOT SHOWN, SEE ARCHITECTURAL DRAWINGS.
  - ELEVATION OF TOP OF STEEL BEAMS AT ROOF LEVEL VARIES.
  - TOP OF STEEL INDICATED THUS:  $\overline{\text{---}}$  T.O.S.
  - ELEVATIONS SHOWN ARE RELATIVE TO FIRST FLOOR TOP OF SLAB DATUM ELEVATION OF 0'-0".
  - INDICATES STEEL DECK, CONCRETE FILL AND SPAN DIRECTION. PLACEMENT OF CONCRETE SHALL BE PER 9/57.3.
  - INDICATES STEEL DECK, AND SPAN DIRECTION.
  - STEEL DECK PER SCHEDULE "2/S7.3". FOR STEEL DECK GENERAL NOTES ON SHEET S4.1
  - [X] ETC. INDICATES QUANTITY OF 3/4" WELDED HEADED STUDS AT TOP FLANGE OF BEAM PER DETAIL "10/S7.3". ALL BEAMS AND ORDERS WHICH ARE COVERED BY STEEL DECK AND CONCRETE FILL SHALL HAVE 3/4" x 6" LONG WELDED HEADED STUDS WITH A MAXIMUM SPACING OF 12" ON CENTER UNLESS OTHERWISE NOTED. SEE TYPICAL STUD DETAIL "5/S7.3".
  - INDICATES BRACED FRAMES, PER ELEVATIONS SHEET "S3.1" AND "S3.2".
  - INDICATES WELDED COLLECTOR BEAM CONNECTION PER DETAIL "17/S7.2".
  - INDICATES MOMENT CONNECTION AT INTERSECTING SUPPORT BEAM PER DETAIL "14/S7.2".
  - INDICATES MOMENT CONNECTION AT TYPICAL GRAVITY COLUMN PER DETAIL "4/S7.2 & 12/S7.2".
  - FOR TYPICAL BEAM TO COLUMN CONNECTION AND BEAM TO BEAM CONNECTION SEE DETAIL "10/S7.2".
  - FOR TYPICAL BEAM PENETRATIONS, SEE DETAIL "20/S7.2".
  - FOR TYPICAL STEEL DECK AND SLAB PENETRATIONS WHERE NOT SPECIFICALLY NOTED ON PLAN, SEE DETAILS "1/S7.3, 7/S7.3 AND 8/S7.3".
  - FOR TYPICAL STEEL DECK SUPPORT AT COLUMNS SEE DETAILS "20/S7.3" UNLESS NOTED OTHERWISE.
  - BEAMS SHALL BE EQUALLY SPACED BETWEEN COLUMNS UNLESS NOTED OTHERWISE.
  - <X> INDICATES BEAM CAMBER IN INCHES AT MID-SPAN.
  - FOR TYPICAL DETAILS AT EXTERIOR AND INTERIOR EDGES OF DECK REFER TO TYPICAL DETAILS SHEET "S7.3" U.N.O.
  - INDICATES STEEL DECK SPAN DIRECTION WHERE DIFFERENT TO TYPICAL SPAN DIRECTION
  - INDICATES SHORING REQUIRED FOR DECK SPAN WHERE SHOWN
  - INDICATES DIAGONAL BRACE FROM BOTTOM FLANGE OF BEAM TO TOP FLANGE OF ADJACENT BEAM PER "7/S7.6"
  - INDICATES TS COLUMN BELOW
  - INDICATES TS COLUMN CONTINUOUS
  - INDICATES TS COLUMN ABOVE
  - INDICATES FULL HEIGHT STIFFENERS PER 19A/S7.2
  - INDICATES CONCRETE CURB FOR MECHANICAL EQUIPMENT. FOR CURB AND MECHANICAL EQUIPMENT PADS SEE DETAILS "9/S7.6 AND 10/S7.6" REFER TO ARCH. AND MECHANICAL DRAWINGS FOR SIZE AND LOCATION
  - INDICATES SAFETY TIE BACK ANCHOR PER DETAILS "13/S7.6" AND "14/S7.6" U.N.O. BRACING REQUIRED PER DETAIL "13/S7.6" TYP. WHERE ROOF BEAM DOES NOT INTERSECT AT THE BACK.

**carrierjohnson**  
architecture for urban environments  
1301 third avenue san diego ca 92101  
phone 619.239.2353 | fax 619.239.6227

**RSSE**  
STRUCTURAL ENGINEERS  
RSSE Structural Engineers Inc.  
27042 Towne Centre Dr.  
Suite 235  
Foothill Ranch, CA 92610  
949.461.7007 / 949.461.7008-Fax

**COURT OF APPEAL FOURTH APPELLATE DISTRICT DIVISION THREE**

**SANTA ANA, CA**

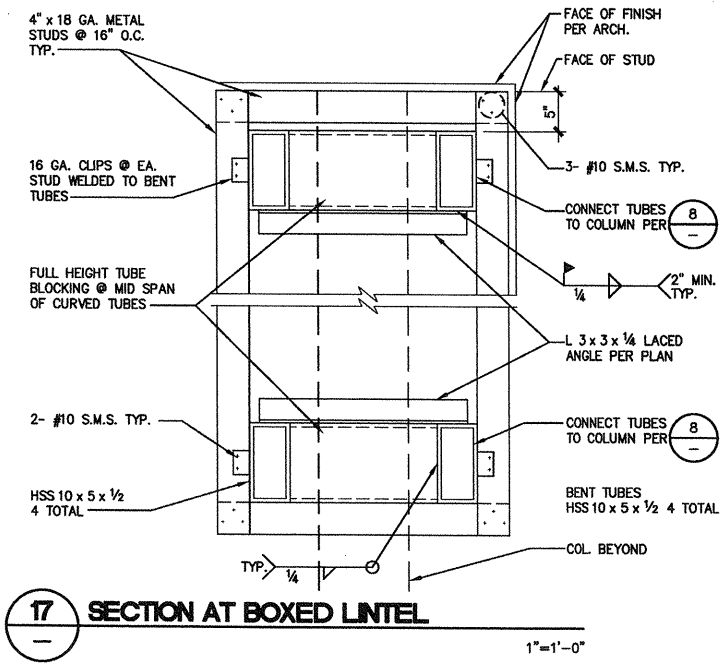
ADMINISTRATIVE OFFICE OF THE COURTS OF CALIFORNIA  
OFFICE OF THE CLERK OF THE SUPERIOR COURT  
AND MANAGEMENT

04-09-07 85% CD SUBMITTAL  
02-29-07 50% CD SUBMITTAL  
ISSUES:

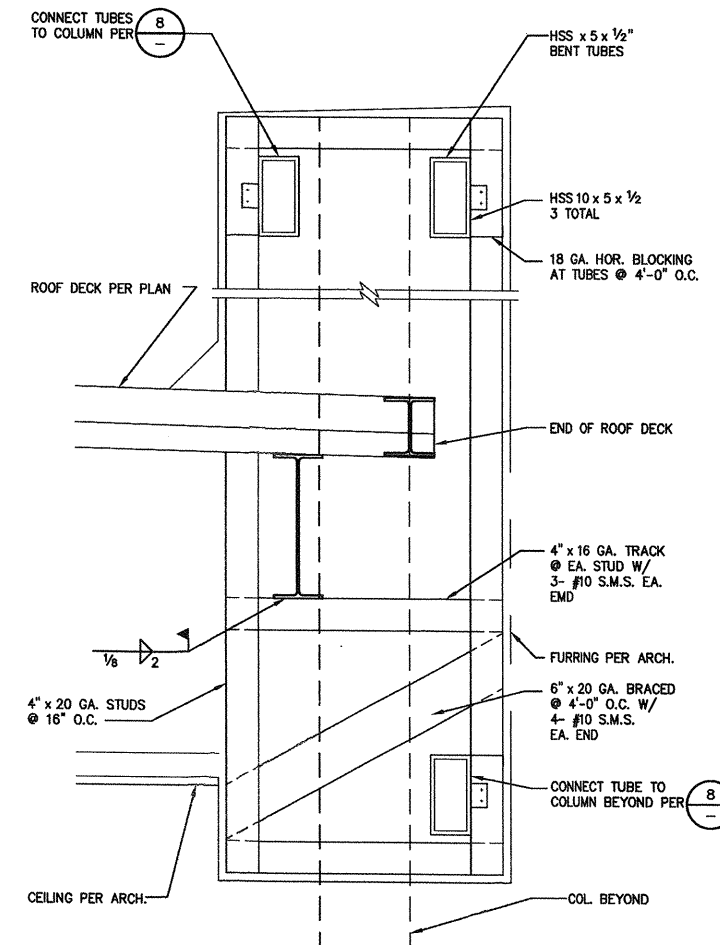
PROJECT NO:  
FILENAME:  
DRAWN BY: CHECKED BY:  
PLOT DATE: 04-05-07  
TITLE:  
**ROOF FRAMING PLAN**  
DRAWING NO:  
**S2.4**



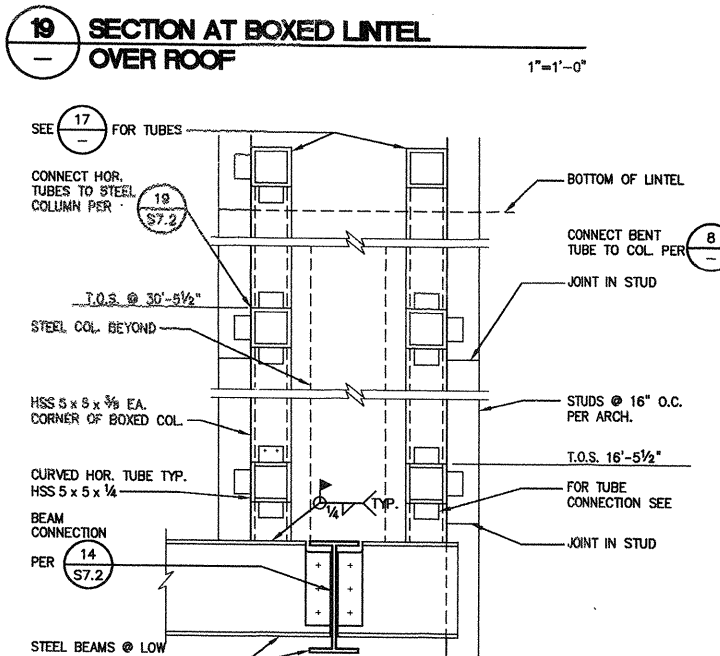
ALL IDEAS, DESIGN ARRANGEMENTS AND PLANS INDICATED OR REPRESENTED BY THIS DRAWING ARE OWNED BY AND THE PROPERTY OF CARRIER JOHNSON AND DEVELOPED FOR USE ON, AND IN CONNECTION WITH THIS PROJECT. NONE OF SUCH IDEAS, DESIGN ARRANGEMENTS, OR PLANS SHALL BE USED BY, OR DISCLOSED TO ANY PERSON, FIRM, OR CORPORATION FOR ANY PURPOSE WHATSOEVER WITHOUT THE WRITTEN PERMISSION OF CARRIER JOHNSON. FILING THESE DRAWINGS OR SPECIFICATIONS WITH ANY PUBLIC AGENCY IS NOT A PUBLICATION OR USE THEREOF IS PERMISSIBLE WITHOUT THE CONSENT OF CARRIER JOHNSON.



**17 SECTION AT BOXED LINTEL**  
1"=1'-0"



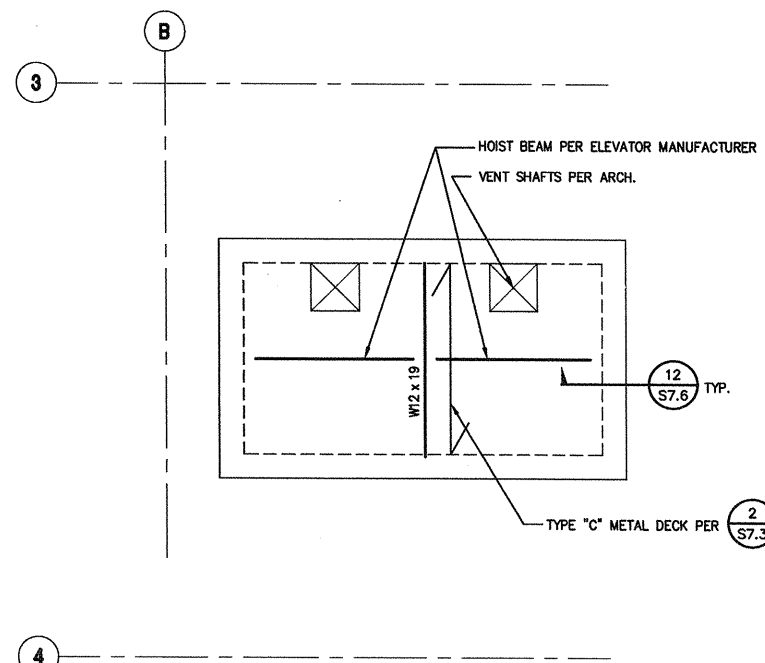
**14 ROOF OVER MECH. SHAFT**  
1"=1'-0"



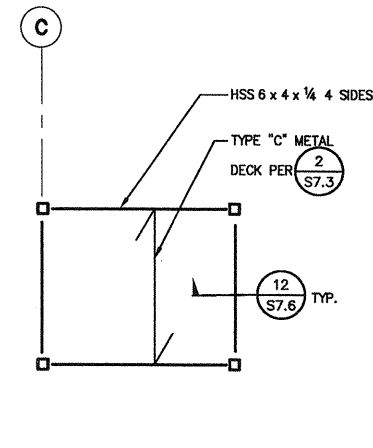
**19 SECTION AT BOXED LINTEL OVER ROOF**  
1"=1'-0"

**20 VERTICAL SECTION AT BOXED COLUMN**  
1"=1'-0"

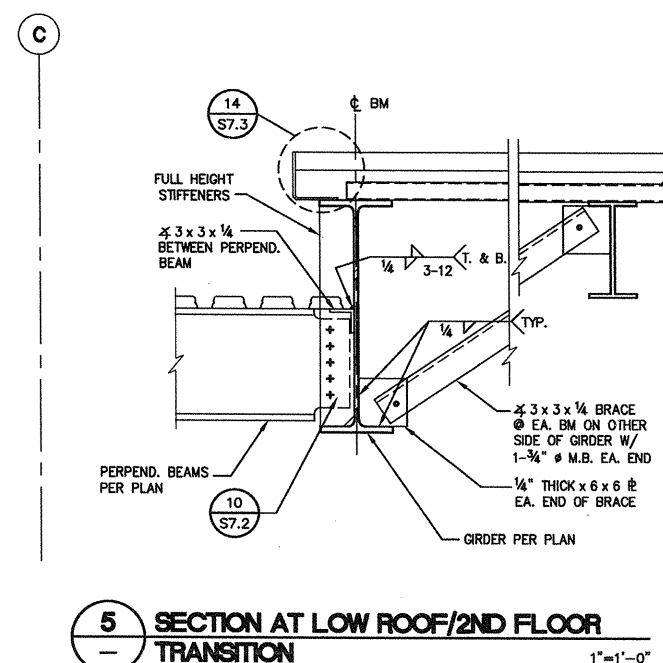
06101/06101\_S78/04/03/07



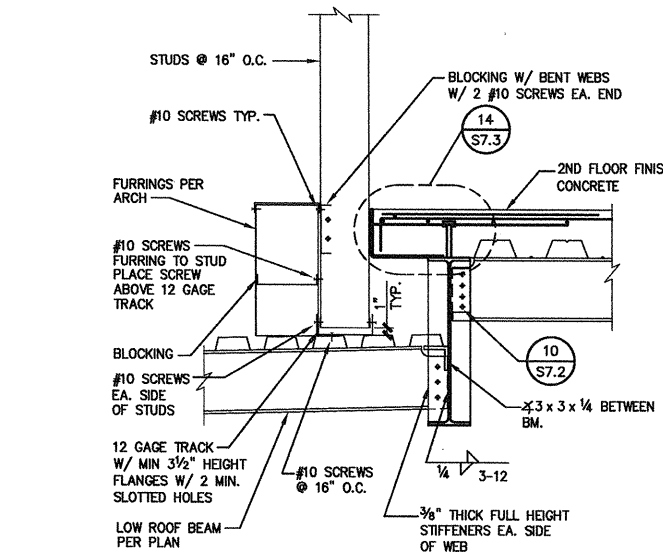
**9 ROOF OVER ELEVATOR SHAFT**  
1"=1'-0"



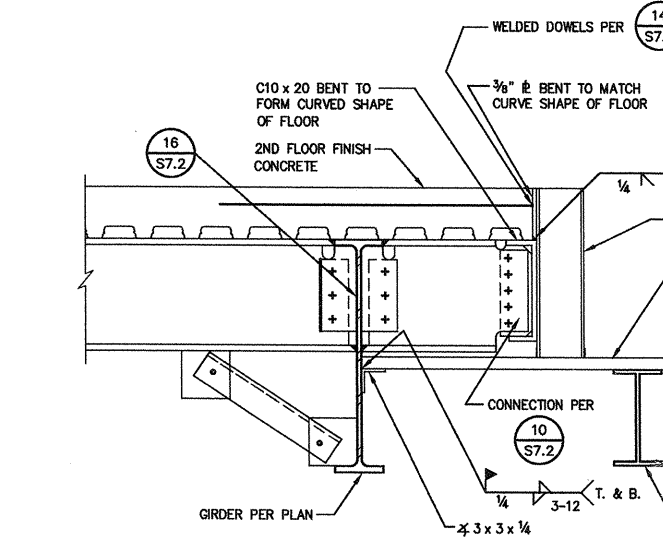
**10 ROOF OVER MECH. SHAFT**  
1"=1'-0"



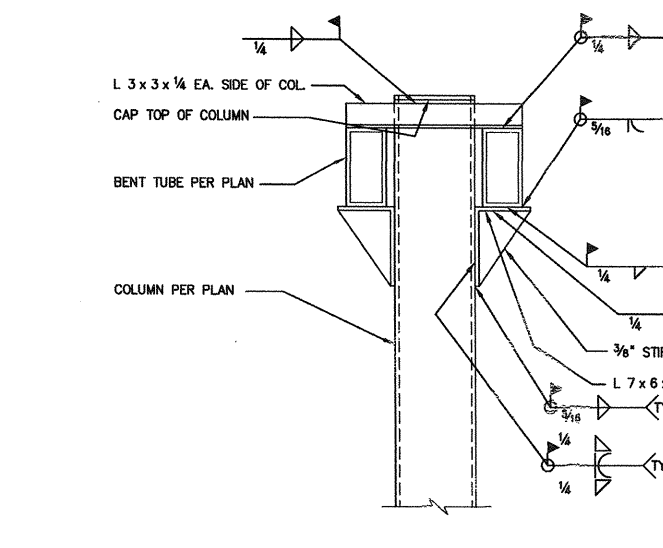
**5 SECTION AT LOW ROOF/2ND FLOOR TRANSITION**  
1"=1'-0"



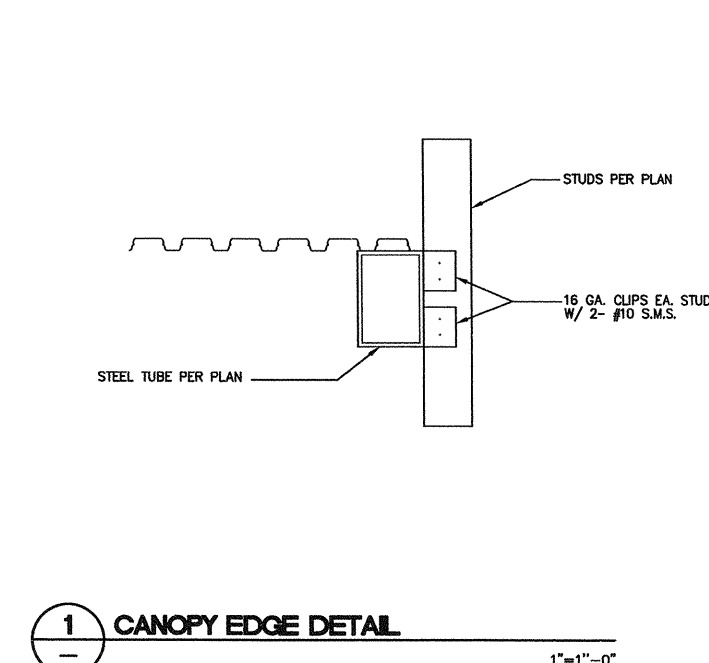
**6 SECTION AT LOW ROOF/2ND FLOOR TRANSITION**  
1"=1'-0"



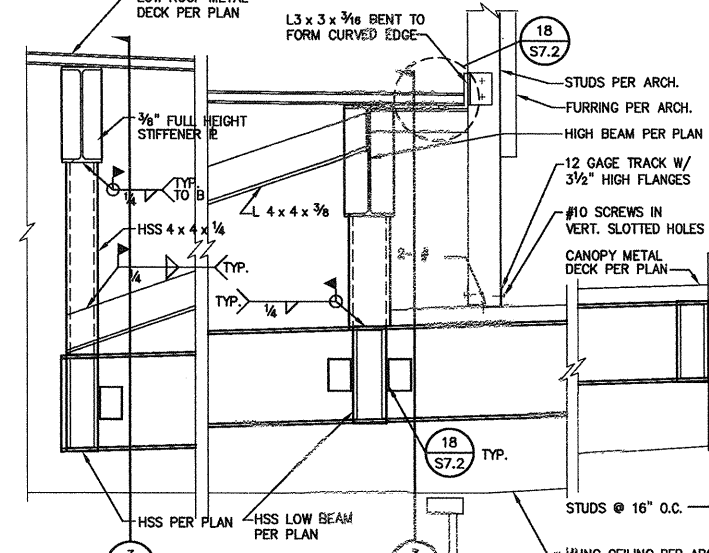
**7 SECTION AT LOW ROOF/2ND FLOOR TRANSITION**  
1"=1'-0"



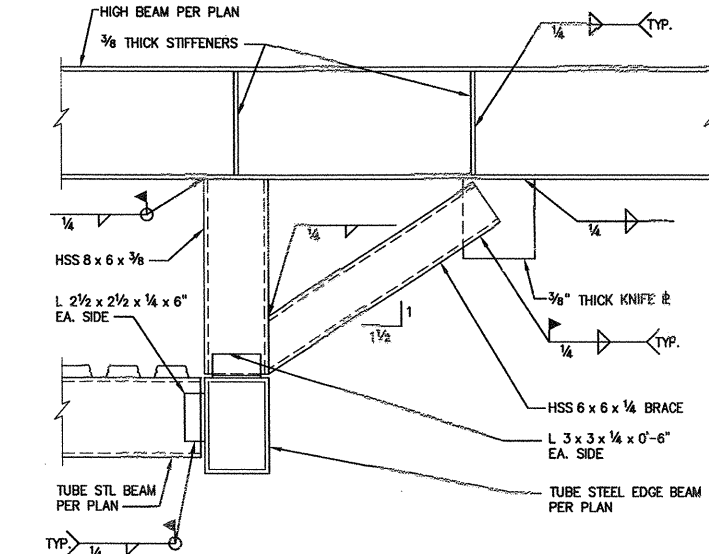
**8 BENT TUBE TO COLUMN CONNECTION**  
1"=1'-0"



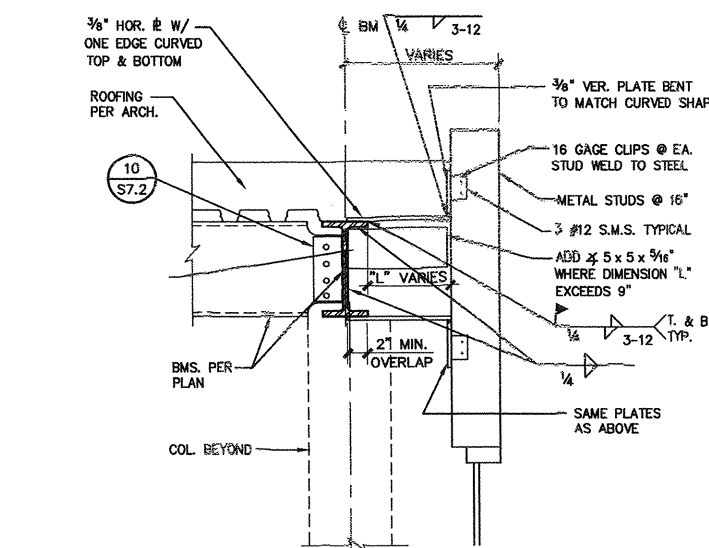
**1 CANOPY EDGE DETAIL**  
1"=1'-0"



**2 SECTION AT ENTRY CANOPY**  
1"=1'-0"



**3 LATERAL BRACING FOR ENTRY CANOPY**  
1"=1'-0"



**4 SECTION AT LOW ROOF PARAPET**  
1"=1'-0"

**carrierjohnson**  
architecture for urban environments  
1301 third avenue san diego ca 92101  
phone 619.299.2355 | fax 619.299.6227

**RSSE**  
STRUCTURAL ENGINEERS  
RSSE  
Structural Engineers Inc.  
27042 Towne Centre Dr.  
Suite 235  
Foothill Ranch, CA 92610  
949.461.7007 / 949.461.7008-Fax

**COURT OF APPEAL FOURTH APPELLATE DISTRICT DIVISION THREE**

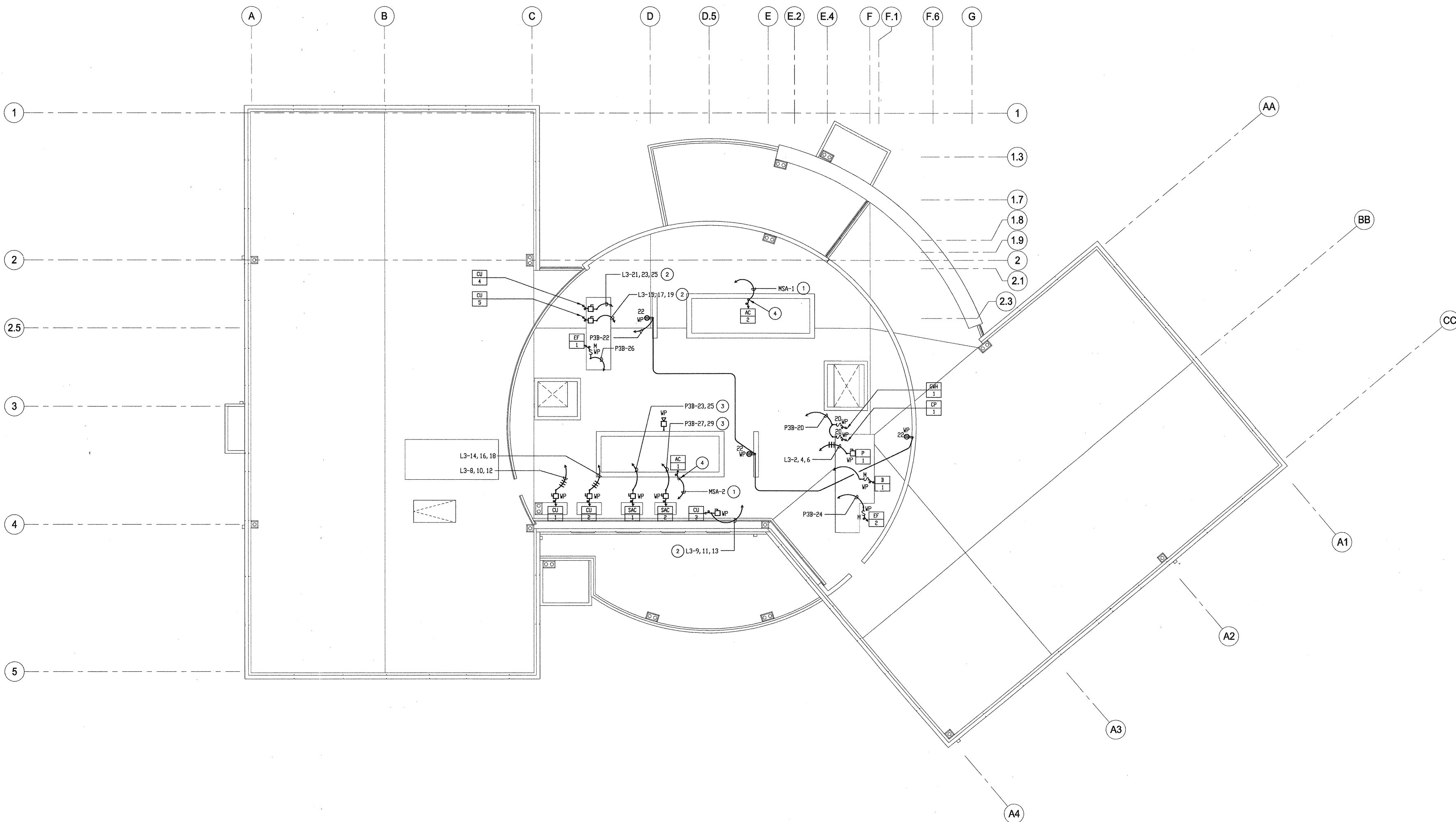
ADMINISTRATIVE OFFICE OF THE COURTS  
OFFICE OF COURT CONSTRUCTION AND MANAGEMENT

04-09-07 95% CD SUBMITTAL  
02-09-07 50% CD SUBMITTAL  
ISSUES:

PROJECT NO:  
FILENAME:  
DRAWN BY: CHECKED BY:  
PLOT DATE: 04-05-07  
TITLE: **STEEL DETAILS**

DRAWING NO. **S7.8**

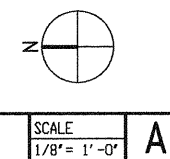
ALL IDEAS, DESIGN ARRANGEMENTS AND PLANS INDICATED OR REPRESENTED BY THIS DRAWING ARE OWNED BY AND THE PROPERTY OF CARRIER JOHNSON AND WERE CREATED, REVISED AND DEVELOPED BY THE PROJECT. NONE OF SUCH IDEAS, DESIGN ARRANGEMENTS, OR PLANS SHALL BE USED BY, OR DISCLOSED TO ANY PERSON, FIRM OR CORPORATION FOR ANY PURPOSE, WITHOUT THE WRITTEN PERMISSION OF CARRIER JOHNSON. FIND THESE DRAWINGS OR REVISIONS WITH ANY PUBLIC AGENCY'S NOT A PUBLICATION OF SAME. NO COPYING, REPRODUCTION OR USE THEREOF IS PERMISSIBLE WITHOUT THE CONSENT OF CARRIER JOHNSON.



- PLAN NOTES
- 1 REFERENCE SINGLE LINE SHEET E4.1 FOR FEEDER REQUIREMENTS.
  - 2 PROVIDE 3#10, 1#10 GRD. - 3/4" C.
  - 3 PROVIDE 2#4, 1#8 GRD. - 1" C.
  - 4 AC-1 AND 2 ARE SPECIFIED WITH FACTORY INSTALLED DISCONNECTS.

CARRIER JOHNSON ARCHITECTURE  
 1301 THIRD AVENUE, SUITE 200  
 SAN DIEGO, CALIFORNIA 92101  
 PHONE 619.239.2353 FAX 619.239.6227  
 WWW.CARRIERJOHNSON.COM

ROOF ELECTRICAL PLAN



SCALE  
 1/8" = 1'-0" A

**carrierjohnson**  
 architecture for urban environments  
 1301 third avenue san diego ca 92101  
 phone 619.239.2353 | fax 619.239.6227

**FBA Engineering**  
 Consulting Engineers, Architects, Planners  
 3400 JEFFERSON AVENUE, SUITE 200  
 SAN DIEGO, CALIFORNIA 92161  
 TEL: 619.594.8800 FAX: 619.594.8801  
 EMAIL: fba@fbaengineering.net  
 FBA # 505.001

**COURT OF APPEAL  
 FOURTH APPELLATE DISTRICT  
 DIVISION THREE  
 SANTA ANA, CA**



04-09-07 80% CD SUBMITTAL  
 12-08-07 50% CD SUBMITTAL  
 ISSUES:

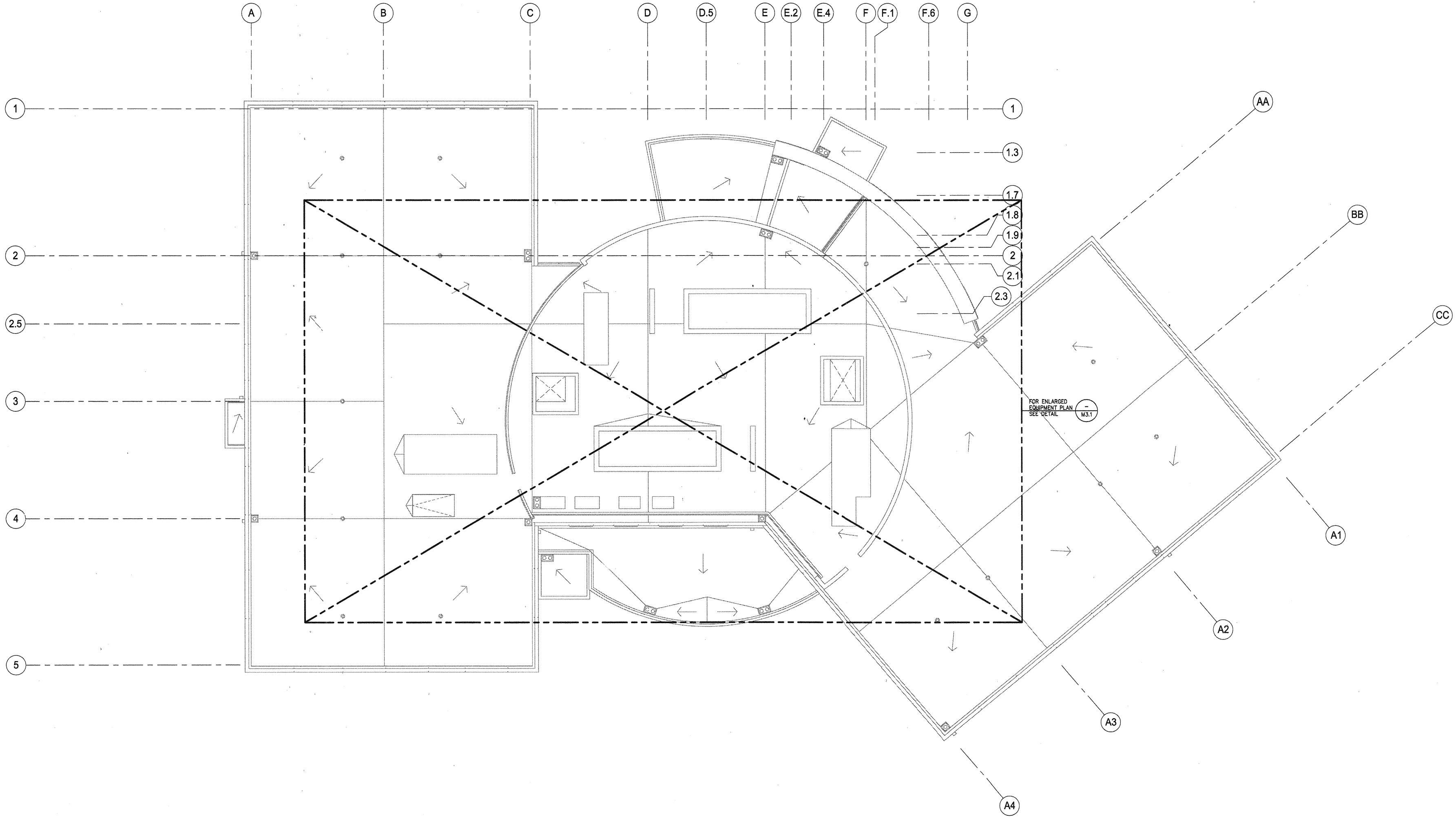
PROJECT NO: \_\_\_\_\_  
 FILENAME: \_\_\_\_\_  
 E3.4\_505001  
 DRAWN BY: J.N. CHECKED BY: B.Z.  
 PLOT DATE: 4-05-07  
 TITLE: \_\_\_\_\_

ROOF ELECTRICAL PLAN

DRAWING NO: \_\_\_\_\_

E3.4

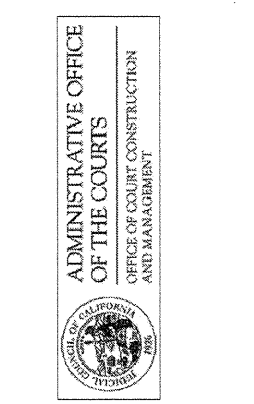
ALL IDEAS, DESIGN, ARRANGEMENTS AND PLANS INDICATED OR REPRESENTED BY THIS DRAWING ARE OWNED BY AND THE PROPERTY OF CARRIER JOHNSON AND WERE CREATED, ENLIGHTENED AND DEVELOPED FOR USE ON AND IN CONNECTION WITH THIS PROJECT. NONE OF SUCH IDEAS, DESIGN, ARRANGEMENTS OR PLANS SHALL BE REPRODUCED, COPIED, REPRODUCED, OR OTHERWISE USED IN ANY MANNER WITHOUT THE WRITTEN PERMISSION OF CARRIER JOHNSON. NO COPYING, REPRODUCTION OR USE THEREOF IS PERMISSIBLE WITHOUT THE CONSENT OF CARRIER JOHNSON.



**carrierjohnson**  
 architecture for urban environments  
 1301 third avenue san diego ca 92101  
 phone 619.239.2353 | fax 619.239.6227

**TKSC**  
 Thomas K. Sullivan & Carter  
 Consulting Mechanical Engineers  
 1771 Van Nuys Avenue, Suite 200  
 Van Nuys, CA 91411  
 Phone: 818.708.0000  
 Fax: 818.708.0077

**COURT OF APPEAL  
 FOURTH APPELLATE DISTRICT  
 DIVISION THREE  
 SANTA ANA, CA**



04-09-07 85% CD SUBMITTAL  
 02-08-07 50% CD SUBMITTAL  
 ISSUES:

PROJECT NO: \_\_\_\_\_  
 DRAWINGS: \_\_\_\_\_  
 FILENAME: \_\_\_\_\_  
 DRAWN BY: \_\_\_\_\_ CHECKED BY: \_\_\_\_\_  
 PLOT DATE: 4-05-07  
 TITLE: \_\_\_\_\_

**ROOF PLAN**

DRAWING NO:

**M2.4**

TKSC #06-003