

Attachment K

Site Plan & Building Section

New San Bernardino Courthouse

Superior Court of California

County of San Bernardino



ADMINISTRATIVE OFFICE
OF THE COURTS

OFFICE OF COURT CONSTRUCTION
AND MANAGEMENT



NORTH ARROWHEAD AVENUE

NORTH MOUNTAIN VIEW AVENUE

BUILDING ENTRY

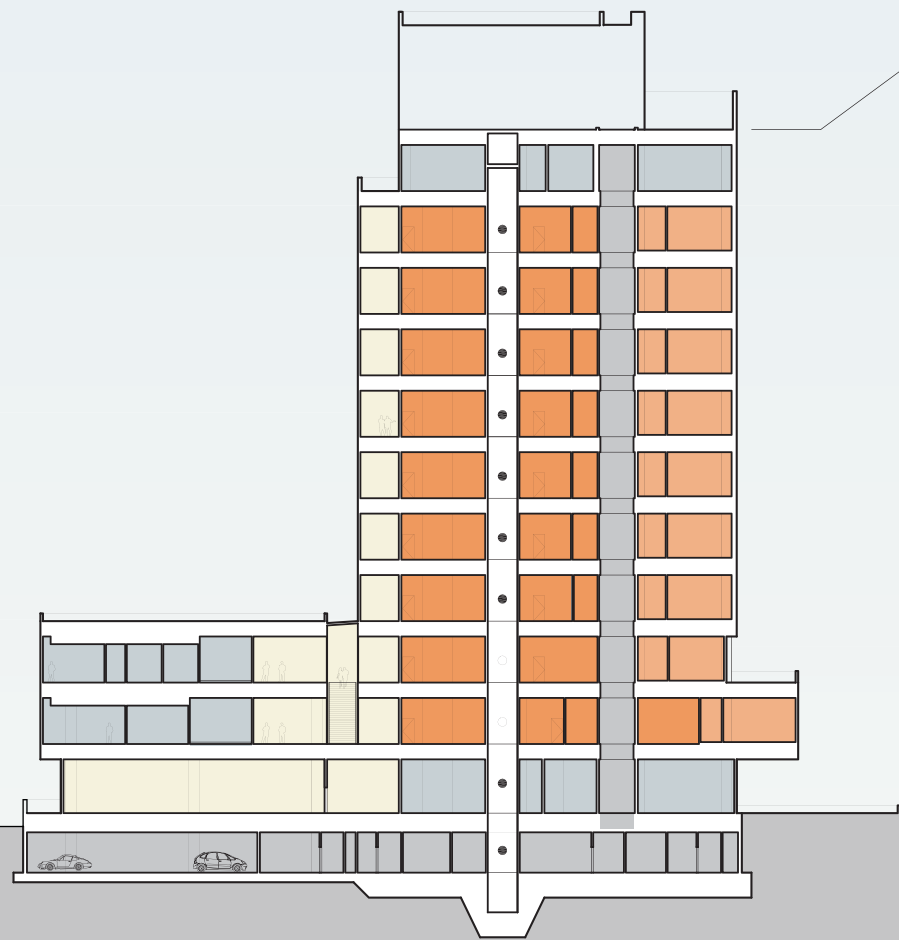
SECURE PARKING/
SALLYPORT

WEST 3RD STREET

PUBLIC PARKING

PUBLIC PARKING

WEST 2ND STREET



11 FLOORS TOTAL
+178'-0" T.O. ROOF

Court Executive Office, court support

Juvenile Court Division

Criminal Courtrooms (Standard Trial)

Criminal Courtrooms (Standard Trial)

Criminal Courtrooms (Standard Trial)

Criminal Courtrooms (Standard Trial)

Criminal Courtrooms (Standard Trial)

Family Law, Probate Courtrooms

Family Law Courtrooms, Clerk Offices

Traffic, Criminal Courtrooms (Ceremonial/Double-Jury), Clerk Offices

Lobby, Jury Services, Clerk Offices

PARTIAL BASEMENT

Secure holding, building support, parking