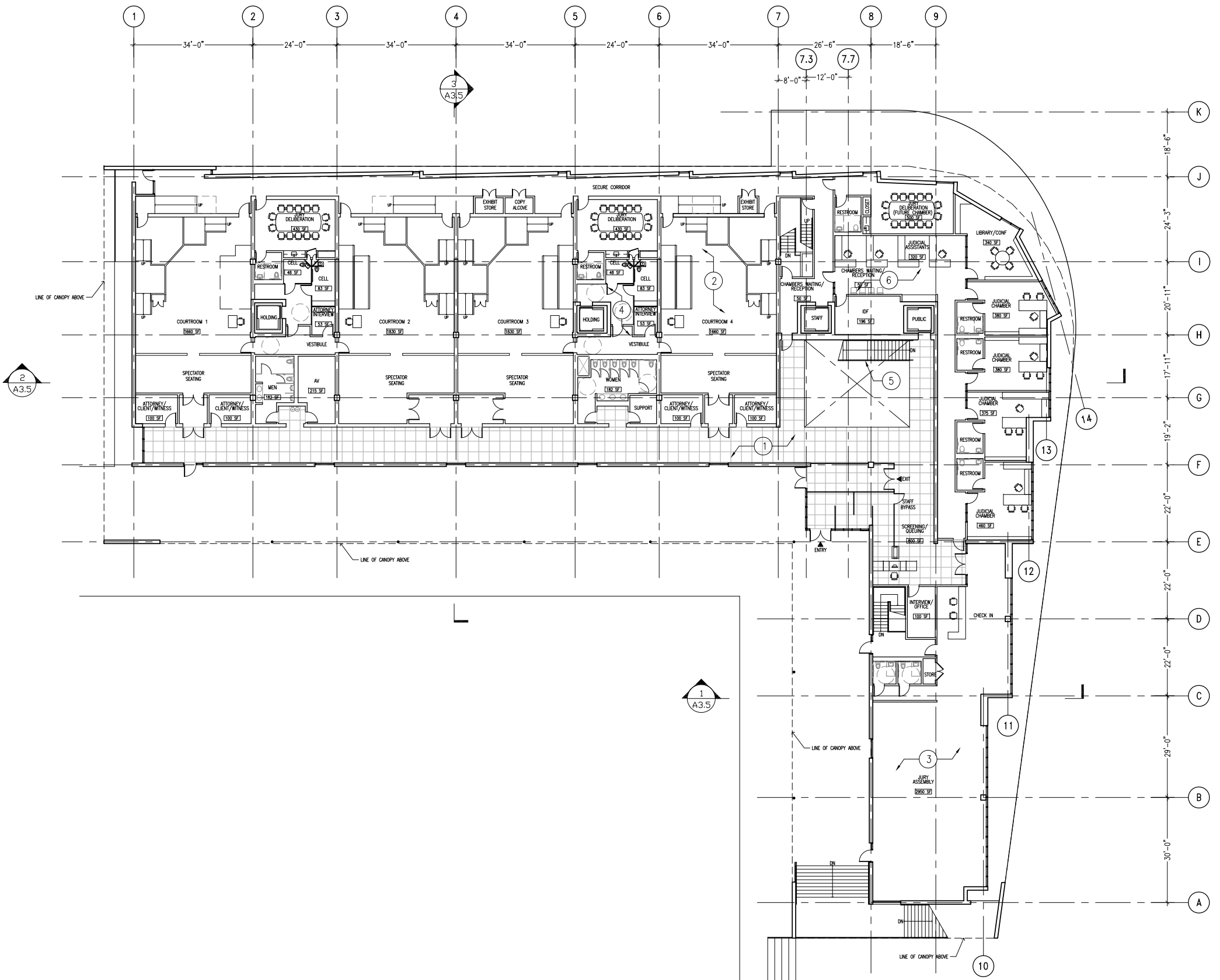


SHEET NOTES

- ① MONUMENT SIGN
- ② ALTERNATE #2: FUTURE PARKING & STAIRS TO COURT
- ③ ALTERNATE #6: STAFF BREAK AREA
- ④ FLAG POLES
- ⑤ PARKING
- ⑥ STONE CLAD BENCHES
- ⑦ SECURE DRIVEWAY TO JUDICIAL PARKING & SALLYPORT WITH SECURITY BOOM ARM
- ⑧ TRANSFORMER, TRASH & MECHANICAL ENCLOSURE IN CONCRETE RETAINING WALL STRUCTURE WITH METAL LOUVERED SCREEN COVERS
- ⑨ ALTERNATE #3: SIDEWALK & LANDSCAPING AT LAKEPORT BLVD.
- ⑩ GLAZED ENTRY VESTIBULE
- ⑪ ROOF LINE

SITE PLAN ①
1/32"=1'-0"

ARCHITECT	REV	DATE	DESCRIPTION
MARK CAVAGNERO ASSOCIATES 1045 SHIMONE STREET SUITE 200 SAN FRANCISCO CA 94111		10.28.2011	50% SCHEMATIC DESIGN
LANDSCAPE ARCHITECT AECOM 150 DUBOIS STREET SAN FRANCISCO CA 94102		12.19.2011	100% SCHEMATIC DESIGN
STRUCTURAL ENGINEER WSP-FLACK & KURTZ 140 WILSON STREET SAN FRANCISCO CA 94111			
MECH/ELEC/PLUMBING ENGINEER ALERSBACH CLAYSON FRENCH 220 UNION STREET SAN FRANCISCO CA 94111			
LIGHTING DESIGNER TECOM DESIGN GROUP 155 SUTTER STREET SAN FRANCISCO CA 94104			
LOW VOLTAGE ENGINEER CHARLES M. SALTER ASSOCIATES 155 SUTTER STREET SUITE 200 SAN FRANCISCO CA 94104			
ACOUSTICAL ENGINEER			
LAKEPORT COURTHOUSE			
LAKEPORT, CA SUPERIOR COURT OF CALIFORNIA, COUNTY OF LAKE			
ARCHITECTURAL SITE PLAN		1/32" = 1'-0"	
A1.0			



SHEET NOTES

REFER TO SHEET A0.1 AND A0.2 FOR ARCHITECTURAL SYSTEM DESCRIPTIONS

- ① LOBBY
FLOOR: STONE TILE
WALLS: WOOD VENEER PANELING
STONE VENEER
EXPOSED CONCRETE
CEILINGS: ACOUSTIC WOOD
- ② COURTROOM, TYP.
FLOOR: CARPET TILE
WALLS: TWO WALLS WOOD PANEL
TWO WALLS STRETCHED-FABRIC WALL PANEL
CEILINGS: ACOUSTIC PANEL WITH GYP. BOARD
- ③ JURY ASSEMBLY
FLOOR: CARPET TILE
WALLS: FABRIC WALL COVERING
GYPSUM BOARD
CEILINGS: ACOUSTIC PANEL WITH GYP. BOARD
- ④ DETENTION AREA, TYP.
FLOOR: EXPOSED CONCRETE
WALLS: DETENTION ENCLOSURES
CEILINGS: SECURITY ACOUSTIC CEILING
- ⑤ STAIR
MONUMENTAL STAIR
- ⑥ OFFICES/JURY DELIBERATION, TYP.
FLOOR: CARPET TILE
WALLS: GYPSUM BOARD
CEILINGS: ACOUSTIC TILE

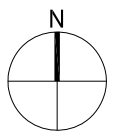
MARK CAVAGNARO ASSOCIATES 1045 SHORE STREET SUITE 200 SAN FRANCISCO CA 94111 SAN JUAN HILLS OFFICE 10000 SAN JUAN HILLS AVENUE SUITE 100 CA 94030 AECOM 150 DUBOIS STREET SAN FRANCISCO CA 94111 WSP-FLACK & KURTZ 140 WARE STREET SAN FRANCISCO CA 94111 ALBERSCH-CLAYSON-FRENCH 250 WARD STREET SAN FRANCISCO CA 94111 TECOM DESIGN GROUP 1500 CALIFORNIA STREET SAN FRANCISCO CA 94109 CHARLES M. SALTER ASSOCIATES 135 SUTHER STREET SUITE 500 SAN FRANCISCO CA 94104	ARCHITECT	REV	DATE	DESCRIPTION
CIVIL ENGINEER			10.28.2011	50% SCHEMATIC DESIGN
LANDSCAPE ARCHITECT			12.19.2011	100% SCHEMATIC DESIGN
STRUCTURAL ENGINEER				
MECH/ELEC/PLUMBING ENGINEER				
LIGHTING DESIGNER				
LOW VOLTAGE ENGINEER				
ACOUSTICAL ENGINEER				

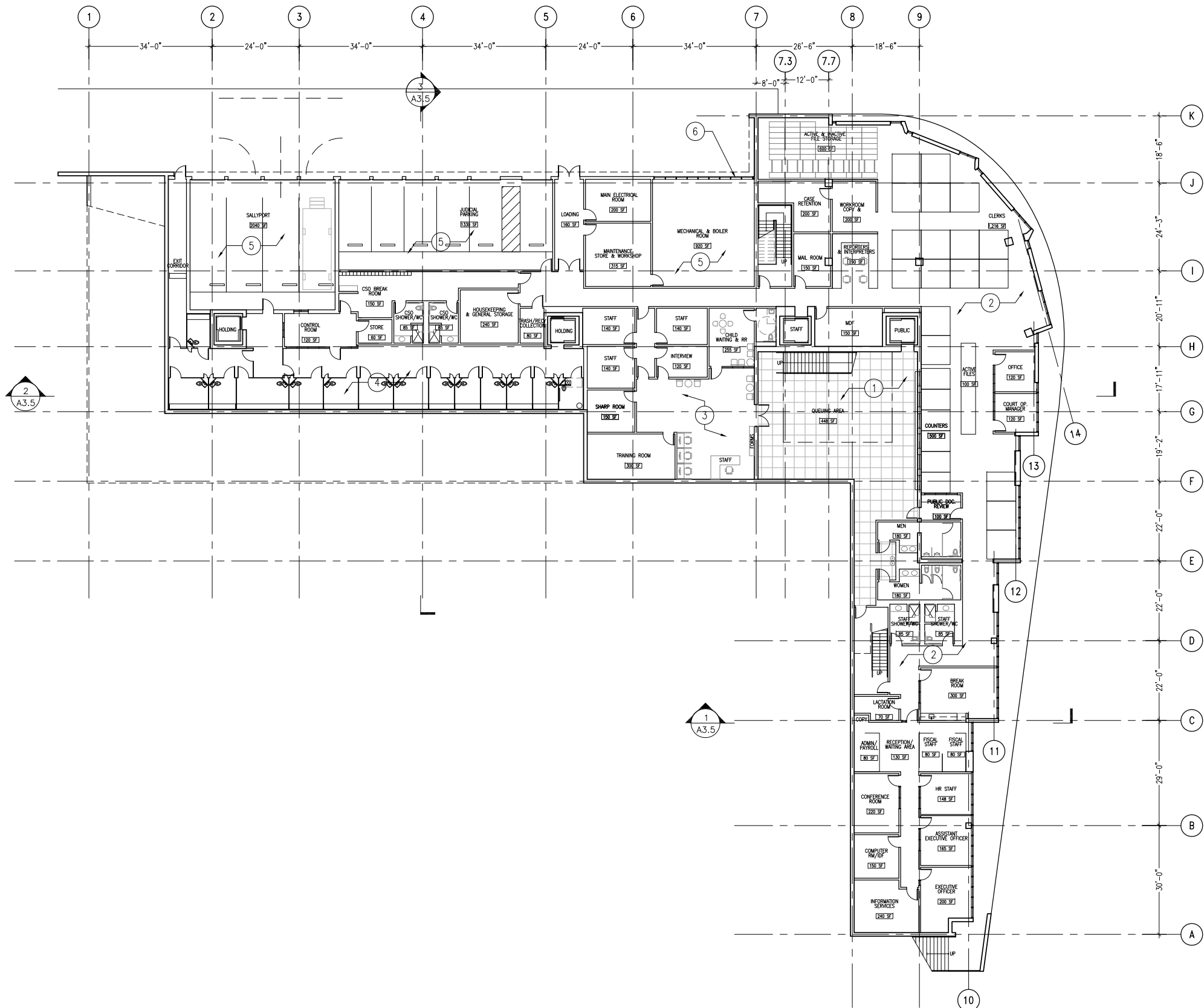
LAKEPORT COURTHOUSE

UPPER LEVEL PLAN
1/16" = 1'-0"

A2.1

UPPER LEVEL PLAN
1/16"=1'-0" ①





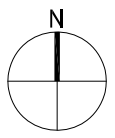
SHEET NOTES

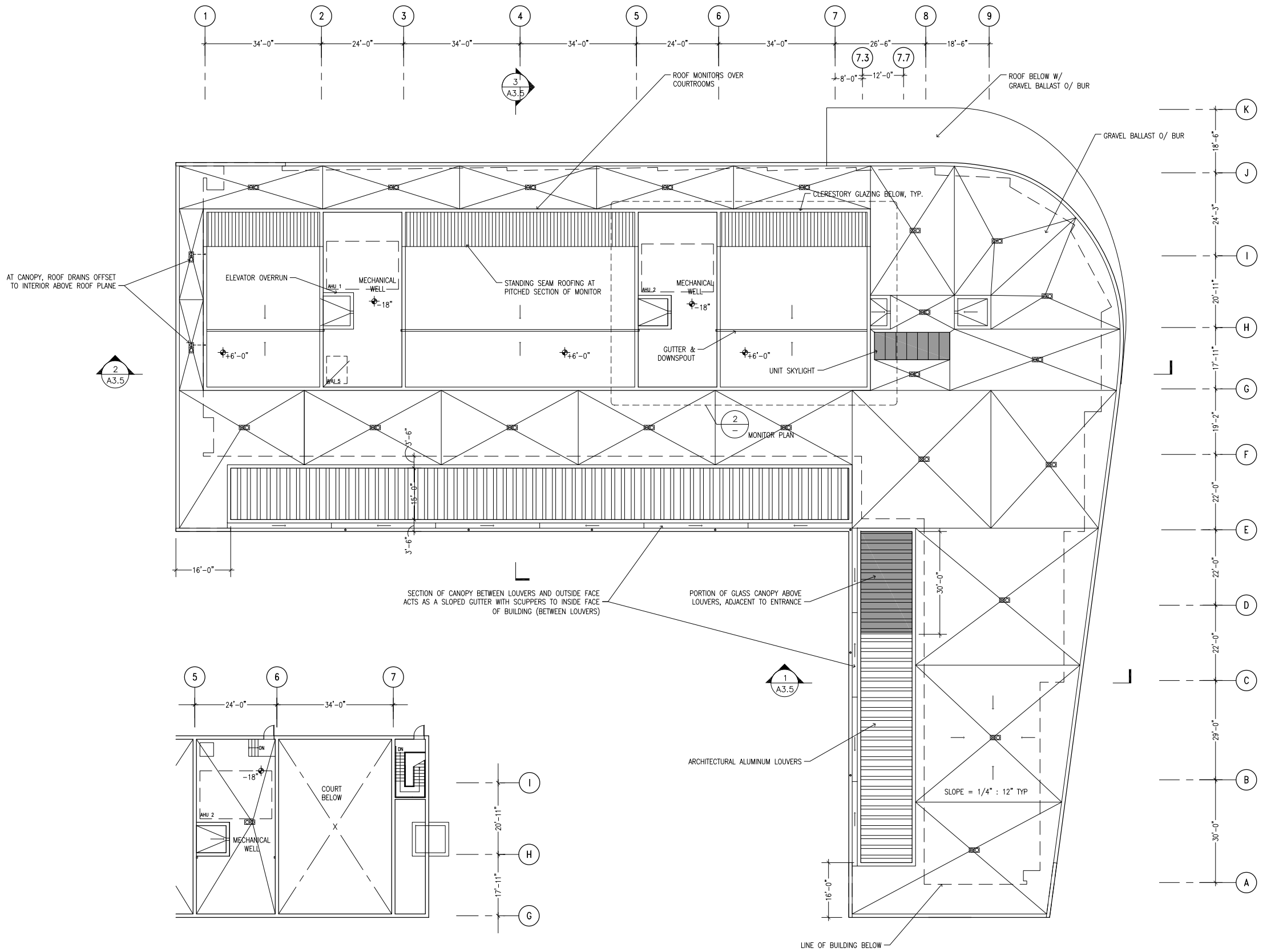
REFER TO SHEET A0.1 AND A0.2 FOR ARCHITECTURAL SYSTEM DESCRIPTIONS

- ① LOBBY
FLOOR: STONE TILE
WALLS: WOOD VENEER PANELING
EXPOSED CONCRETE
CEILING: ACOUSTIC WOOD
- ② OFFICES, TYP.
FLOOR: CARPET TILE
WALLS: GYPSUM BOARD
CEILING: ACOUSTIC TILE
- ③ SELF-HELP/MEDIATION
FLOOR: CARPET TILE
WALLS: FABRIC WALL COVERING
CEILING: ACOUSTIC TILE WITH GYPSUM BOARD
- ④ DETENTION AREA, TYP.
FLOOR: EXPOSED CONCRETE
WALLS: DETENTION ENCLOSURES
CEILING: SECURITY ACOUSTIC CEILING
- ⑤ PARKING/SUPPORT, TYP.
FLOOR: EXPOSED CONCRETE (BROOM FINISH AT SALLYPORT & JUDICIAL PARKING)
WALLS: GYPSUM BOARD
ARCHITECTURALLY EXPOSED CONCRETE
CEILING: CONCRETE DECKING
- ⑥ METAL LOUVERS

ARCHITECT	DESCRIPTION
MARK CAVAGNERO ASSOCIATES 1045 SHORE STREET SUITE 200 SAN FRANCISCO CA 94111	50% SCHEMATIC DESIGN
DATE	10.28.2011
REV	12.19.2011
ARCHITECT	50% SCHEMATIC DESIGN
CIVIL ENGINEER	100% SCHEMATIC DESIGN
LANDSCAPE ARCHITECT	
STRUCTURAL ENGINEER	
MECH/ELEC/PLUMBING ENGINEER	
LIGHTING DESIGNER	
LOW VOLTAGE ENGINEER	
ACOUSTICAL ENGINEER	
AECOM 150 DUBUQUE STREET SAN FRANCISCO CA 94102 WSP-FLACK & KURTZ 140 WILSON STREET SAN FRANCISCO CA 94111 ALPERBACH ASSOCIATES 250 WILSON STREET SAN FRANCISCO CA 94111 TEGOM DESIGN GROUP 155 SUTTER STREET SUITE 200 SAN FRANCISCO CA 94104	
LAKEPORT COURTHOUSE	
LAKEPORT, CA	
SUPERIOR COURT OF CALIFORNIA, COUNTY OF LAKE	
LOWER LEVEL PLAN	
1/16" = 1'-0"	
A2.2	

LOWER LEVEL PLAN ①
1/16"=1'-0"





PARTIAL MONITOR PLAN
1/16"=1'-0" (2)

ROOF PLAN
1/16"=1'-0" (1)

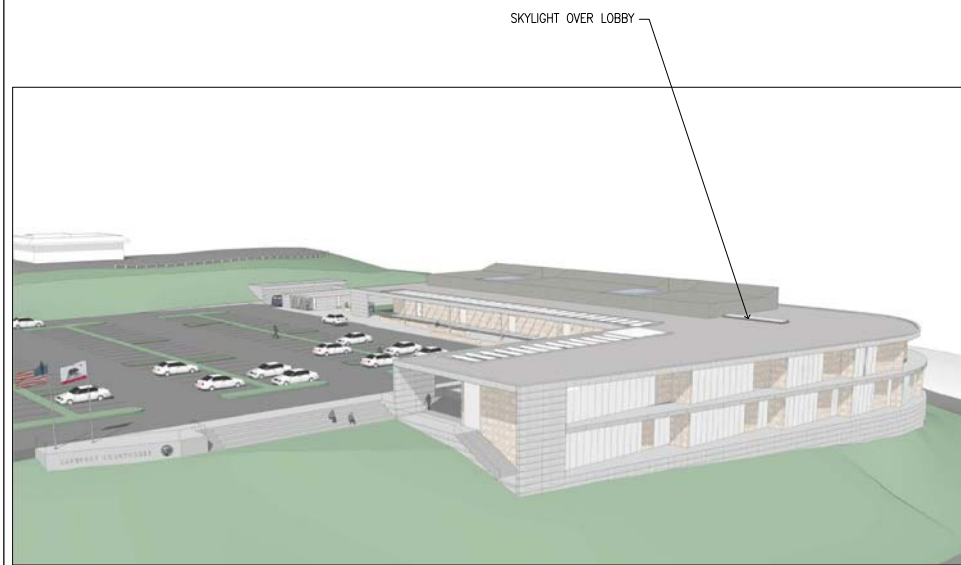
ARCHITECT	REV	DATE	DESCRIPTION
MARK CAVAGNERO ASSOCIATES		10.28.2011	50% SCHEMATIC DESIGN
		12.19.2011	100% SCHEMATIC DESIGN

ARCHITECT	REV	DATE	DESCRIPTION
CIVIL ENGINEER			
LANDSCAPE ARCHITECT			
STRUCTURAL ENGINEER			
MECH/ELEC/PLUMBING ENGINEER			
LIGHTING DESIGNER			
LOW VOLTAGE ENGINEER			
ACOUSTICAL ENGINEER			

LAKEPORT COURTHOUSE
LAKEPORT, CA
SUPERIOR COURT OF CALIFORNIA, COUNTY OF LAKE

ROOF PLAN
1/16" = 1'-0"

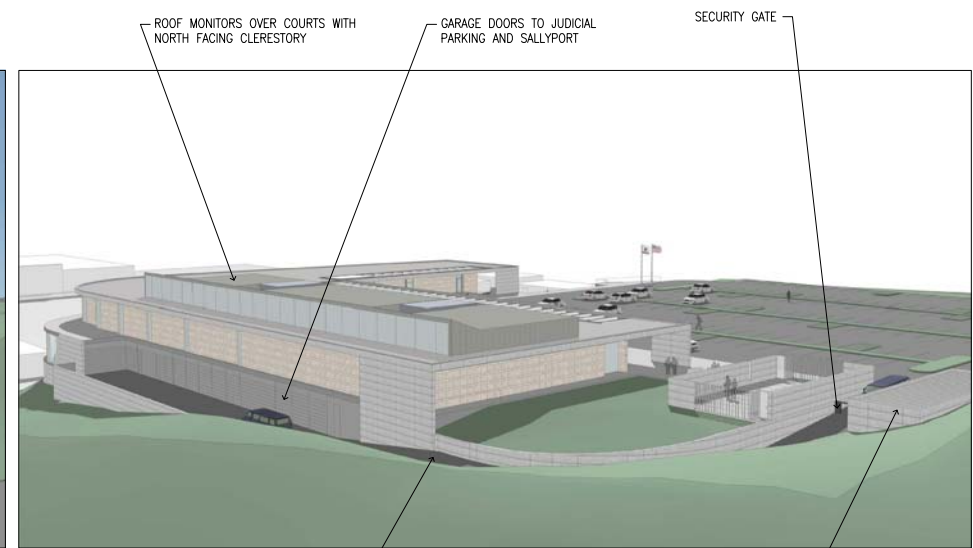
A2.3



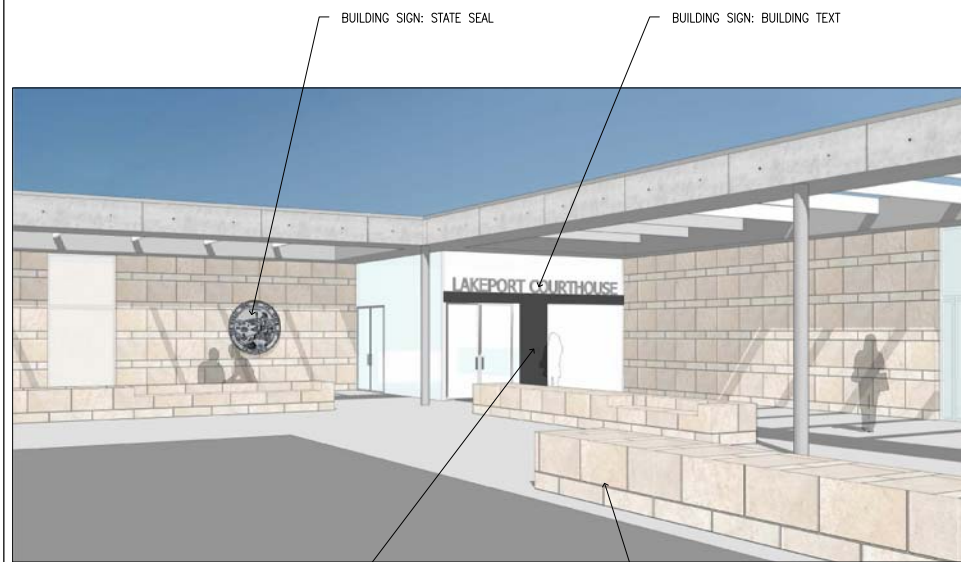
AERIAL VIEW FROM SOUTH EAST
NTS ⑥



STREET VIEW AT LAKEPORT BOULEVARD
NTS ④



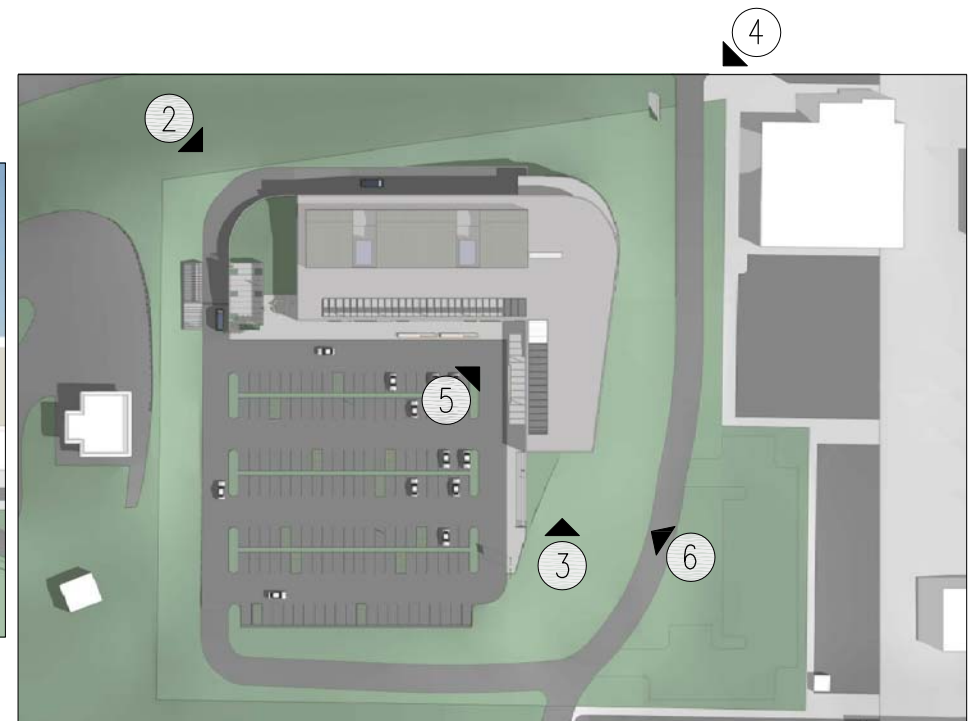
AERIAL VIEW FROM NORTH WEST
NTS ②



VIEW OF ENTRANCE VESTIBULE
NTS ⑤



VIEW OF SOUTH ELEVATION
NTS ③



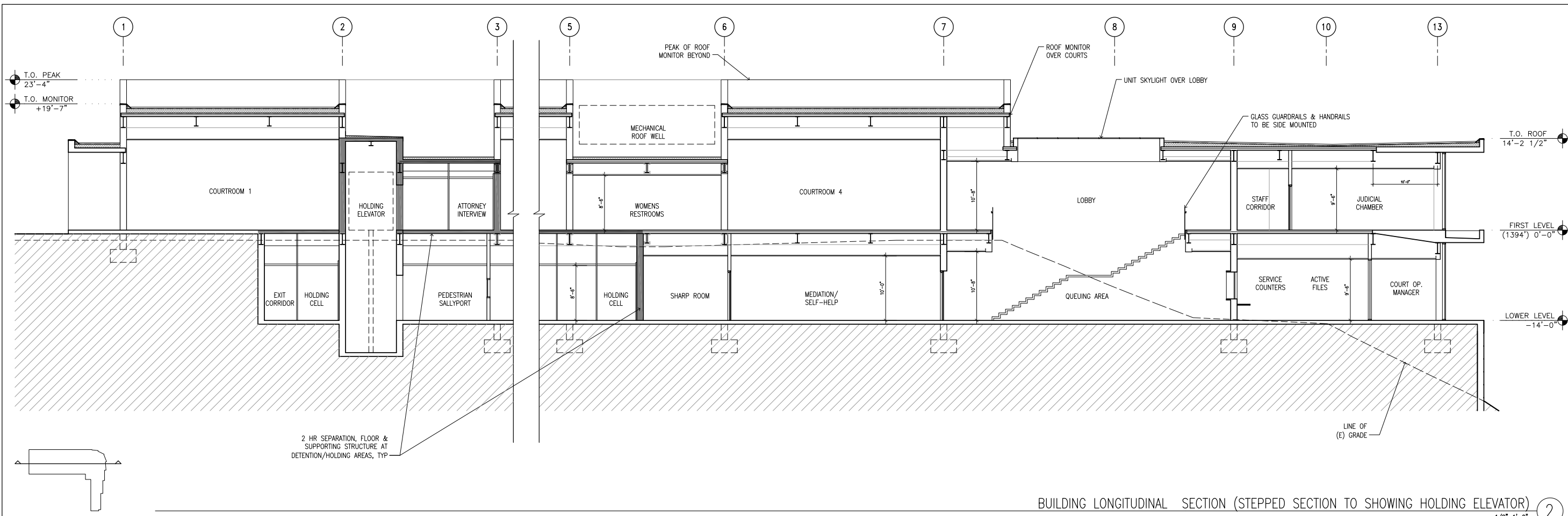
AERIAL VIEW & PERSPECTIVES KEYPLAN
NTS ①

ARCHITECT	REV	DATE	DESCRIPTION
CIVIL ENGINEER		10.28.2011	50% SCHEMATIC DESIGN
LANDSCAPE ARCHITECT		12.19.2011	100% SCHEMATIC DESIGN
STRUCTURAL ENGINEER			
MECH/ELEC/PLUMBING ENGINEER			
LIGHTING DESIGNER			
LOW VOLTAGE ENGINEER			
ACOUSTICAL ENGINEER			

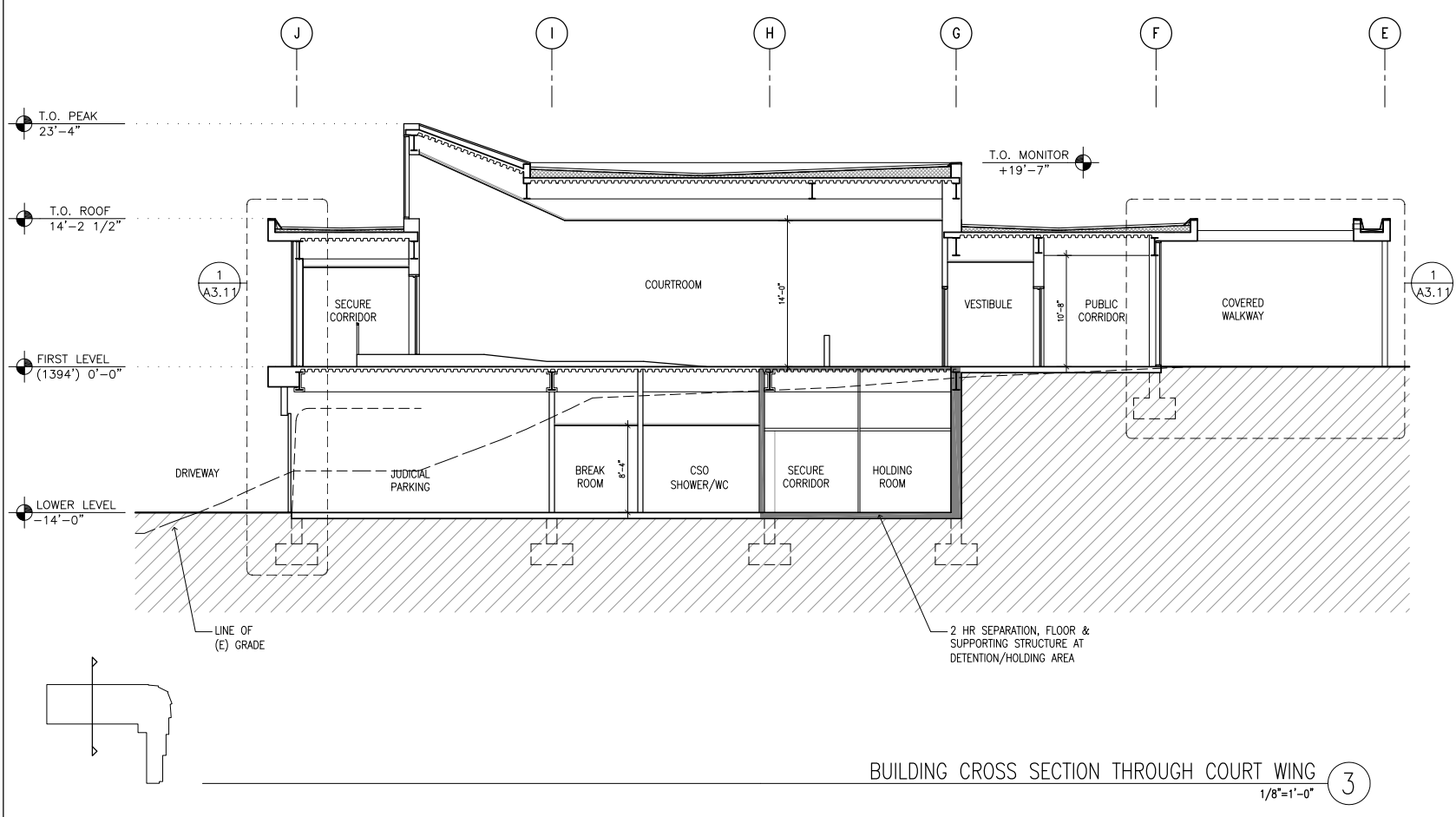
LAKEPORT COURTHOUSE
LAKEPORT, CA
SUPERIOR COURT OF CALIFORNIA, COUNTY OF LAKE

3D VIEWS & PERSPECTIVES
NTS

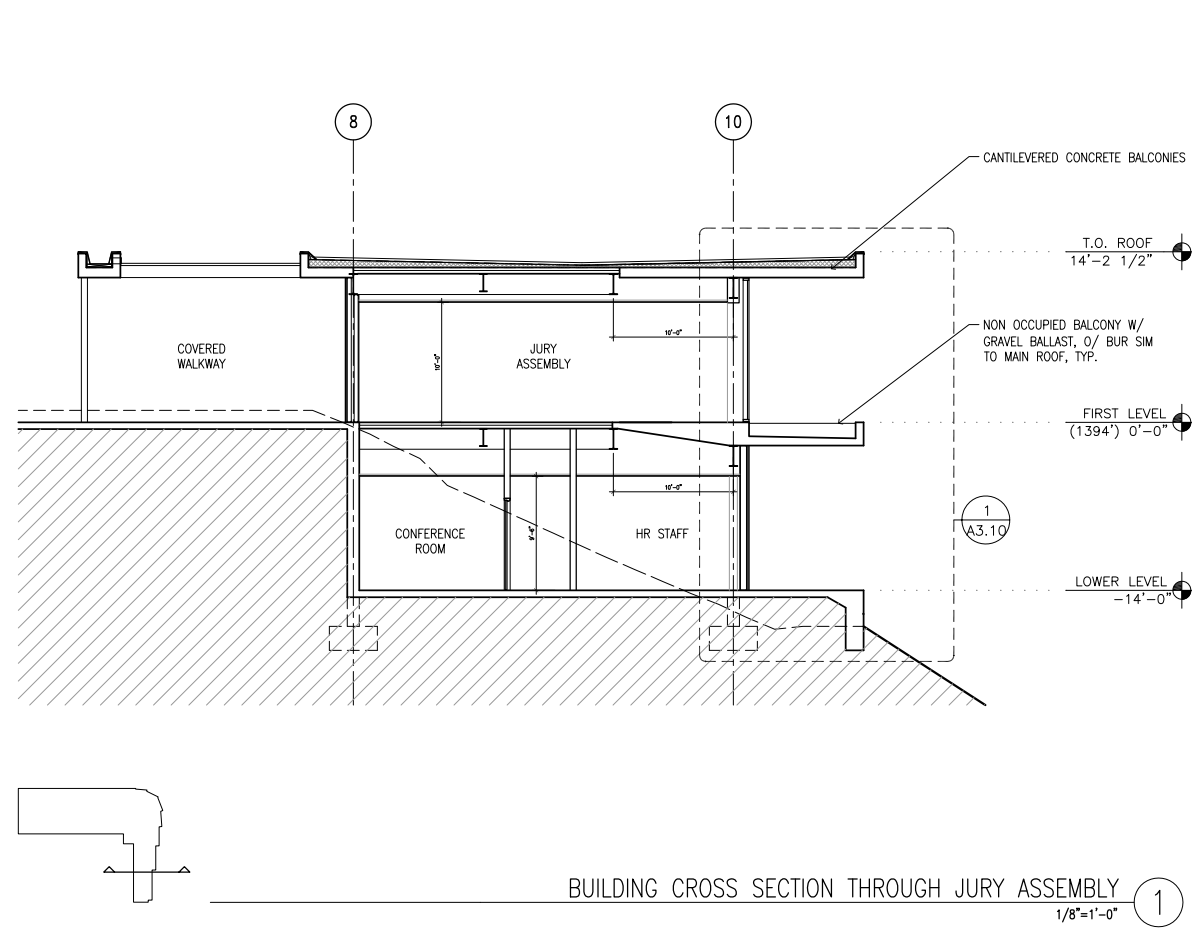
A3.0



BUILDING LONGITUDINAL SECTION (STEPPED SECTION TO SHOWING HOLDING ELEVATOR) 2
1/8"=1'-0"



BUILDING CROSS SECTION THROUGH COURT WING 3
1/8"=1'-0"



BUILDING CROSS SECTION THROUGH JURY ASSEMBLY 1
1/8"=1'-0"

<p>MARK CAVIGNERO ASSOCIATES 1045 SHAWNEE STREET SUITE 200 SAN FRANCISCO CA 94111 SAN JUAN BAUTISTA DRIVE SERRANO CA 94065 AECOM 150 DUBUQUE STREET SAN FRANCISCO CA 94111 190 WILSON STREET SAN FRANCISCO CA 94111 WSP-FLACK & KURTZ 190 WILSON STREET SAN FRANCISCO CA 94111 ALBERSCH, OLSON, FRENCH 230 WORTH STREET SAN FRANCISCO CA 94111 TECOM DESIGN GROUP 155 SUTTER STREET SUITE 500 SAN FRANCISCO CA 94104</p>	<p>ARCHITECT</p>	<p>REV</p>	<p>DATE</p>	<p>DESCRIPTION</p>	
	<p>CIVIL ENGINEER</p>	<p>LANDSCAPE ARCHITECT</p>	<p>STRUCTURAL ENGINEER</p>	<p>Mech/ELEC/PLUMBING ENGINEER</p>	<p>10.28.2011 50% SCHEMATIC DESIGN</p>
	<p>LOW VOLTAGE ENGINEER</p>	<p>ACoustical ENGINEER</p>	<p>LIGHTING DESIGNER</p>	<p>12.19.2011 100% SCHEMATIC DESIGN</p>	
<p>LAKEPORT COURTHOUSE</p> <p>LAKEPORT, CA SUPERIOR COURT OF CALIFORNIA, COUNTY OF LAKE</p>					
<p>BUILDING SECTIONS</p> <p>1/8" = 1'-0"</p>					
<p>A3.5</p>					