



Attachment A

Project Description

New Eastlake Juvenile Courthouse

Superior Court of California

County of Los Angeles



JUDICIAL COUNCIL
OF CALIFORNIA

OPERATIONS AND PROGRAMS DIVISION
CAPITAL PROGRAM

ATTACHMENT A—PROJECT DESCRIPTION

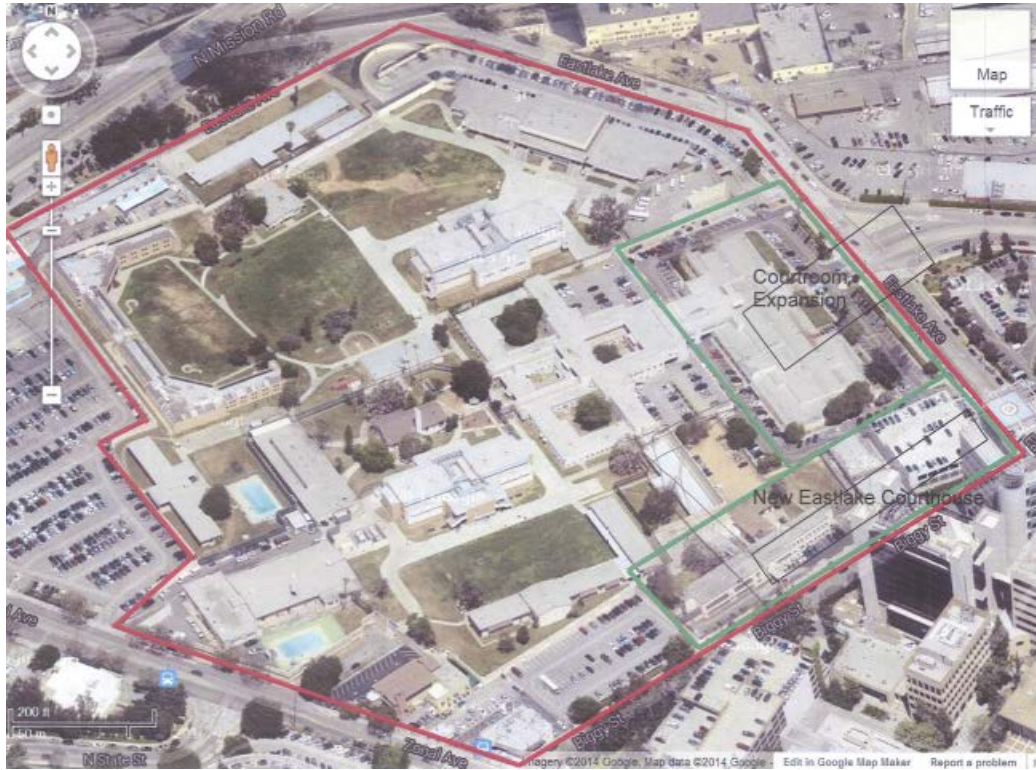
Project Name	No. of Courts	Size (Sq Ft)	Construction Cost	Construction Start
County of Los Angeles: New Eastlake Juvenile Courthouse	5 Courtrooms	58,000 sqft	\$48 Million	TBD

The project includes the design and construction of a new juvenile courthouse building to be occupied by the Superior Court of California, County of Los Angeles. The project will replace the existing Eastlake Juvenile Courthouse near downtown Los Angeles with a modern, secure courthouse. The new courthouse is estimated to be approximately 58,000 building gross square feet (BGSF) in area with five courtrooms. The project also includes construction of 140 surface parking spaces for staff and visitors and 8 secure parking spaces for judicial officers. The project delivery method for construction is CM@Risk with LEED silver rating.

Notes:

1. Project construction scheduling assumptions include:
 - Site acquisition: in progress
 - Schematic Design/Design Development: 12 months
 - Working Drawings: 14 months
 - Construction: 30 months

ATTACHMENT A – PROJECT DESCRIPTION



NOTE: No courthouse site has been selected yet; however, the new courthouse is anticipated to be located within this county campus (shown in red) near downtown Los Angeles.

End of Attachment