



# Attachment A

## Project Description

---

### New Sacramento Criminal Courthouse

Superior Court of California

County of Sacramento



JUDICIAL COUNCIL  
OF CALIFORNIA

---

OPERATIONS AND PROGRAMS DIVISION  
CAPITAL PROGRAM

## ATTACHMENT A—PROJECT DESCRIPTION

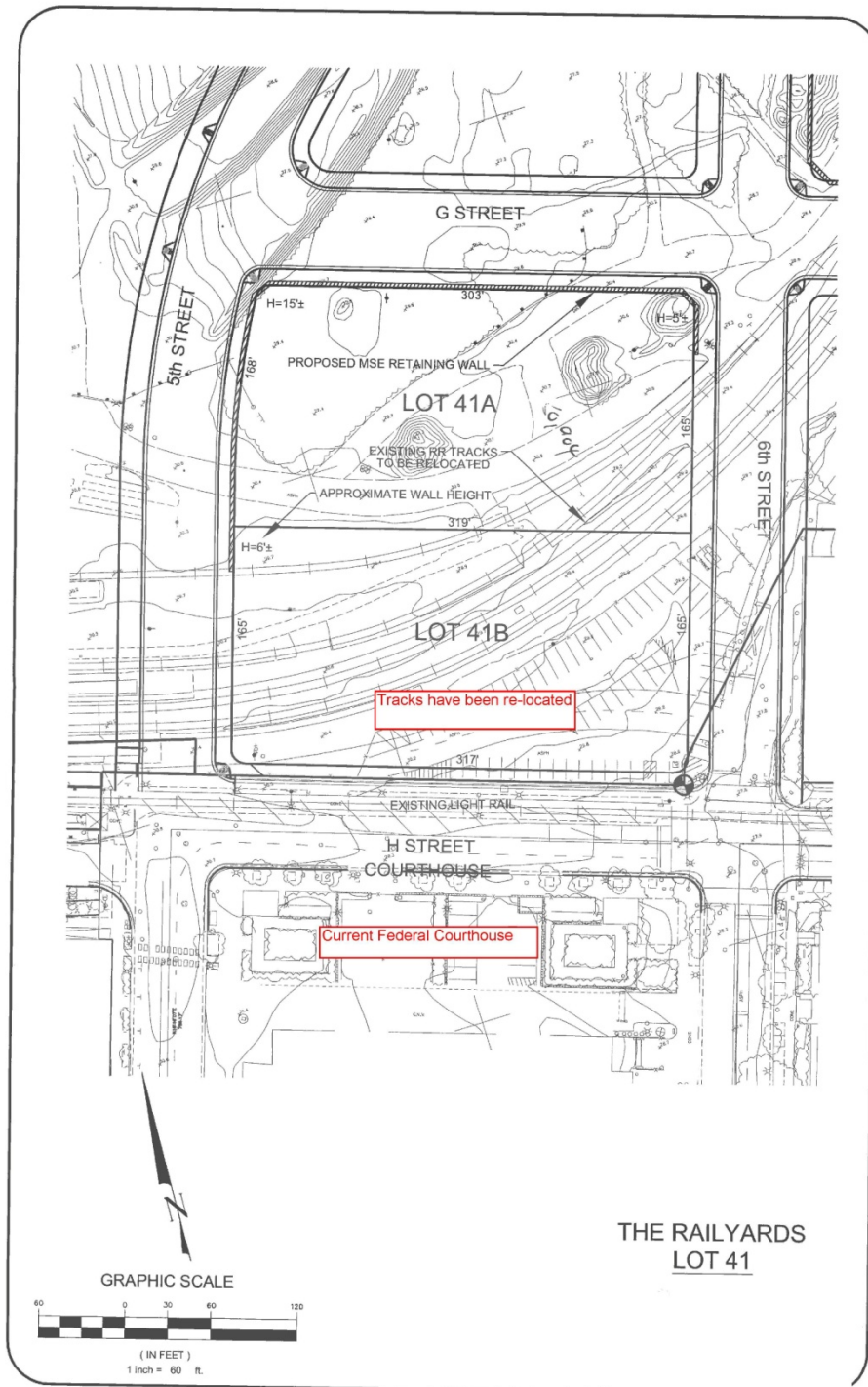
<i>Project Name</i>	<i>No. of Courts</i>	<i>Size (Sq Ft)</i>	<i>Construction Cost</i>	<i>Construction Start</i>
Sacramento County: New Sacramento County Criminal Courthouse	44 Courtrooms	405,468	\$303.0 Million	Fall 2017

The project includes the design and construction of a new criminal courthouse building to be occupied by the Superior Court of California, County of Sacramento. The project replaces and consolidates five existing facilities and portions of the existing Gordon D. Schaber Courthouse. The new courthouse with a basement is estimated to be 405,468 building gross square feet (BGSF) in area with secure underground spaces for judicial officers. The project delivery method for construction is CM@Risk with LEED silver rating.

### Notes:

1. Feasibility reports for the above projects are posted at <http://www.courts.ca.gov/programs-facilities.htm>
2. Project construction scheduling assumptions include:
  - Site acquisition/Pre-design: Completed
  - Schematic Design/Design Development: 12 months
  - Working Drawings: 14 months
  - Construction: 38 months

# ATTACHMENT A – PROJECT DESCRIPTION



End of Attachment