

# NEW EL CENTRO COURTHOUSE

EL CENTRO, CALIFORNIA

CLIENT  
**Judicial Council of California,  
Administrative Office of the Courts**  
455 Golden Gate Ave  
San Francisco, CA 94102

ARCHITECT  
**Safdie Rabines Architects**  
925 Fort Stockton Drive  
San Diego, CA 92103  
(619) 297-6153  
www.safdiearabines.com

STRUCTURAL ENGINEER  
Thornton Tomasetti  
925 Fort Stockton Drive, Suite 200  
San Diego, CA 92103  
(619) 550-5800

MECHANICAL, ELECTRICAL, AND PLUMBING  
ENGINEER  
Stantec  
14130 Riverside Drive, Suite 201  
Sherman Oaks, CA 91423-2313  
(818) 305-3203

CIVIL ENGINEER  
RBF Consulting  
5050 Avenida Encinas, Suite 260  
Carlsbad, CA 92008-4386  
(760) 933-6243

LANDSCAPE ARCHITECT  
The Office of James Burnett  
550 Lomas Santa Fe, Suite A  
Solana Beach, CA 92075  
(858) 793-6970

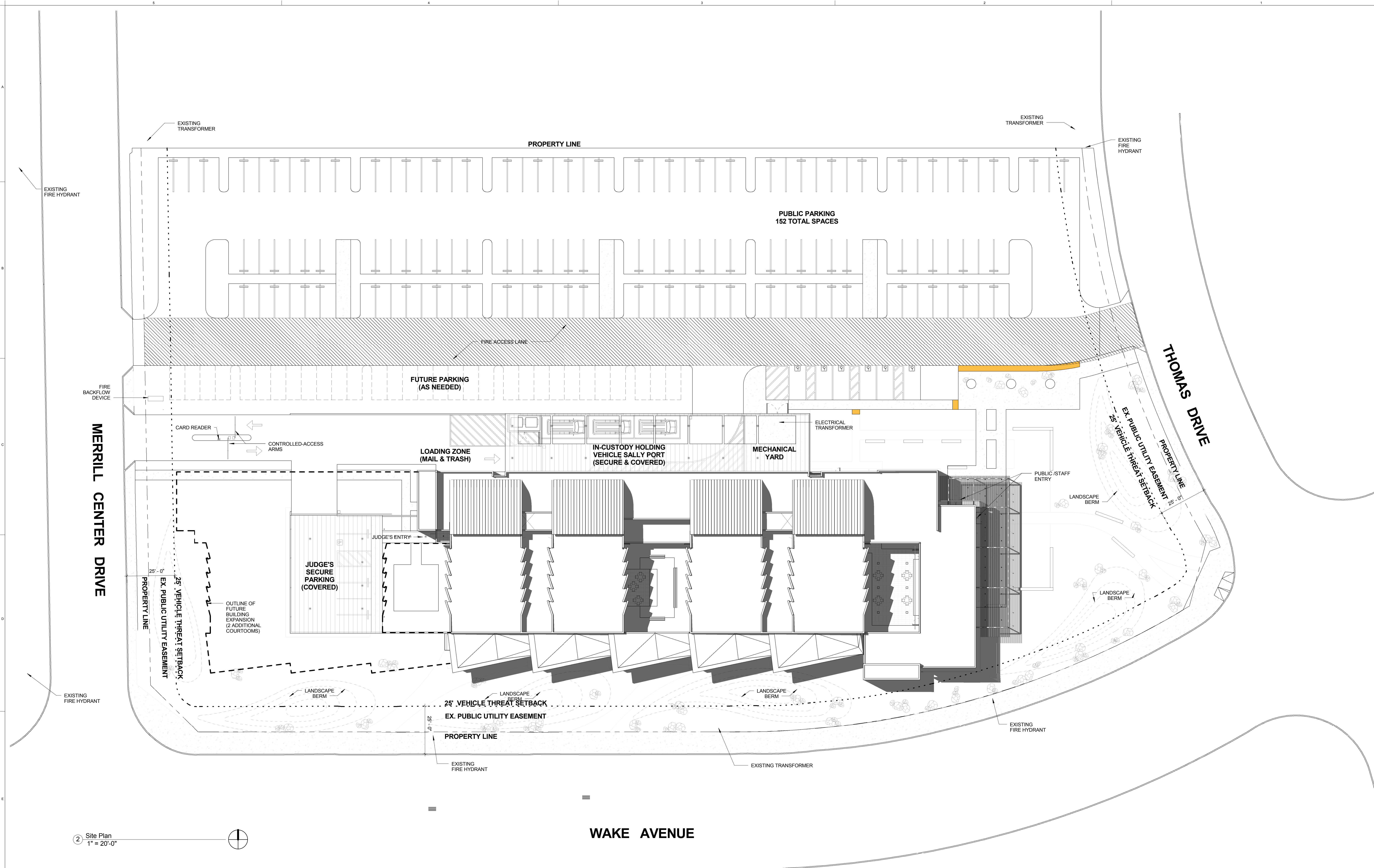
SECURITY CONSULTING  
Knoff Advisory Solutions  
475 Sansome Street  
San Francisco, CA 94111  
(415) 743-4800

FIRE SPRINKLER DESIGN  
Protection Design & Consulting  
2951 Camino del Rio South, #400  
San Diego, CA 92108  
(858) 751-2930

DRY UTILITY CONSULTANT  
Bulsko Utility Design, Inc.  
28835 Jefferson Avenue, Suite A  
Murietta, CA 92562  
(951) 834-9920

AUDIOVISUAL & ACOUSTICAL CONSULTANT  
Veneklassen Associates  
1711 Sixteenth Street  
Santa Monica, CA 90404  
(310) 450-1733

LIGHTING DESIGN  
Lighting Design Alliance  
2830 Temple Avenue  
Long Beach, CA 90806  
(562) 989-3843



2 Site Plan  
1" = 20'-0"

### KEYNOTES

### GENERAL NOTES

1. KEYNOTES ON THESE SHEETS ARE AN ACCUMULATION OF ITEMS ON THE PLANS, SECTIONS & ELEVATIONS SHEETS, NOT ALL ITEMS ARE FOUND ON EACH SHEET.
2. DIMENSIONS SHOWN ARE TYPICAL OF THIS SHEET ONLY, UNLESS NOTED OTHERWISE.
3. GRIDLINES ARE SET TO THE CENTER LINE OF COLUMNS OR THE EXTERIOR FACE OF CMU / CONCRETE / WOOD STUDS.
4. REFER TO SHEET G-XX FOR SITE ACCESSIBILITY AND EGRESS PLAN.
5. REFER TO SHEETS G-0XX, G-0XX & G-0XX FOR EGRESS & LIFE SAFETY PLANS.
6. REFER TO SHEETS G-0XX & G-0XX FOR GENERAL SITE & BUILDING ACCESSIBILITY GUIDELINES.
7. REFER TO CIVIL DRAWINGS FOR ADDITIONAL GRADING & SITE UTILITY INFORMATION.
8. REFER TO LANDSCAPE DRAWINGS FOR ADDITIONAL INFORMATION.
9. REFER TO STRUCTURE DRAWINGS FOR ADDITIONAL INFORMATION.
10. MECHANICAL UNITS & LAYOUTS SHOWN ARE FOR INFORMATION ONLY. REFER TO MECHANICAL DRAWINGS FOR ADDITIONAL INFORMATION.
11. REFER TO PLUMBING DRAWINGS FOR ADDITIONAL INFORMATION.
12. REFER TO ELECTRICAL DRAWINGS FOR ADDITIONAL INFORMATION.
13. REFER TO AXN SERIES SHEETS FOR ENLARGED PLANS, REFLECTED CEILING PLANS, INTERIOR WALL DIMENSIONS, AND INTERIOR WALL TAGS.
14. REFER TO WALL AND FLOOR TYPES FOR INSULATION R-VALUES AND FOR RATED ASSEMBLIES.
15. REFER TO AXN SERIES SHEETS FOR STAIR, RAMP, AND ELEVATOR DRAWINGS.
16. PENETRATIONS OF FIRE-RESISTIVE WALLS, FLOOR-CEILING AND ROOF-CEILING SHALL BE PROTECTED AS REQUIRED IN IBC SECTION 713.
17. REFER TO A8.01 FOR DOOR SCHEDULE.

### REVISIONS

Number	Description	Date
01	100% SCHEMATIC DESIGN	05/14/2014
02	50% DESIGN DEVELOPMENT	06/18/2014

Issue Date  
**06/18/14**

SRA Project Number  
**#0907**

### SITE PLAN

A100

# NEW EL CENTRO COURTHOUSE

EL CENTRO, CALIFORNIA

CLIENT  
**Judicial Council of California,  
Administrative Office of the Courts**  
453 Golden Gate Ave  
San Francisco, CA 94102

ARCHITECT  
**Safdie Rabines Architects**  
825 Fort Stockton Drive  
San Diego, CA 92103  
(619) 297-6153  
www.safdie.com

STRUCTURAL ENGINEER  
Thornton Tomasetti  
925 Fort Stockton Drive, Suite 200  
San Diego, CA 92103  
(619) 550-5800

MECHANICAL, ELECTRICAL, AND PLUMBING ENGINEER  
Slantec  
14130 Riverside Drive, Suite 201  
Sherman Oaks, CA 91423-2313  
(818) 395-3203

CIVIL ENGINEER  
RBF Consulting  
5050 Avenida Encinas, Suite 260  
Carlsbad, CA 92008-4386  
(760) 933-6243

LANDSCAPE ARCHITECT  
The Office of James Burnett  
550 Lomas Santa Fe, Suite A  
Solana Beach, CA 92075  
(858) 793-6970

SECURITY CONSULTING  
Kroll Advisory Solutions  
475 Sansome Street  
San Francisco, CA 94111  
(415) 743-4800

FIRE SPRINKLER DESIGN  
Protection Design & Consulting  
2951 Camino del Rio South, #400  
San Diego, CA 92108  
(619) 751-2930

DRY UTILITY CONSULTANT  
Bulsko Utility Design, Inc.  
28835 Jefferson Avenue, Suite A  
Murreta, CA 92562  
(951) 834-9920

AUDIOVISUAL & ACOUSTICAL CONSULTANT  
Veneklassen Associates  
1711 Sutherland Street  
Santa Monica, CA 90404  
(310) 450-1733

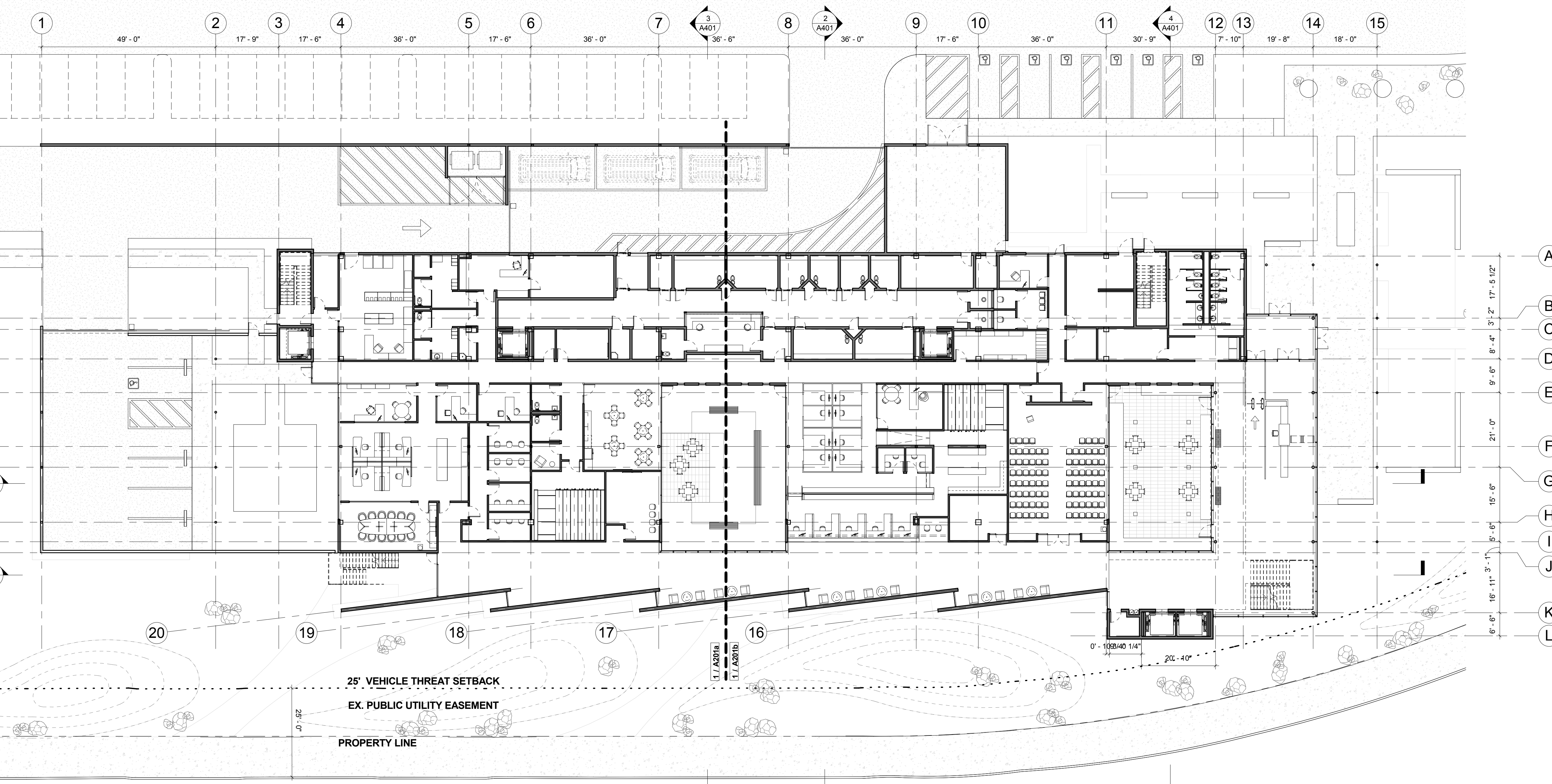
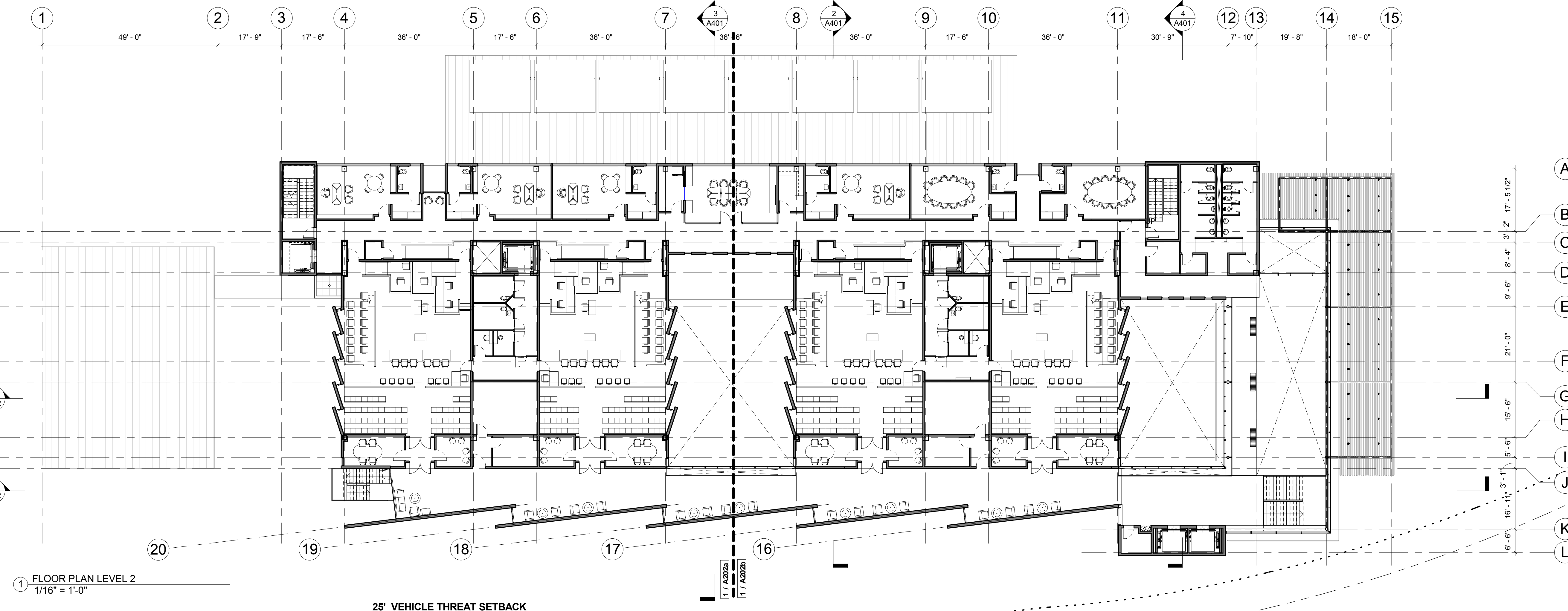
LIGHTING DESIGN  
Lighting Design Alliance  
2830 Temple Avenue  
Long Beach, CA 90806  
(562) 989-3843

## GENERAL NOTES

- KEYNOTES ON THESE SHEETS ARE AN ACCUMULATION OF ITEMS ON THE PLANS, SECTIONS & ELEVATIONS SHEETS. NOT ALL ITEMS ARE FOUND ON EACH SHEET.
- DIMENSIONS SHOWN ARE TYPICAL OF THIS SHEET ONLY, UNLESS NOTED OTHERWISE.
- GRIDLINES ARE SET TO THE CENTER LINE OF COLUMNS OR THE EXTERIOR FACE OF CMU / CONCRETE / WOOD STUDS.
- REFER TO SHEET G-XX FOR SITE ACCESSIBILITY AND EGRESS PLAN.
- REFER TO SHEETS G-0XX, G-0XX & G-0XX FOR EGRESS & LIFE SAFETY PLANS.
- REFER TO SHEETS G-0XX & G-0XX FOR GENERAL SITE & BUILDING ACCESSIBILITY GUIDELINES.
- REFER TO CIVIL DRAWINGS FOR ADDITIONAL GRADING & SITE UTILITY INFORMATION.
- REFER TO LANDSCAPE DRAWINGS FOR ADDITIONAL INFORMATION.
- REFER TO STRUCTURE DRAWINGS FOR ADDITIONAL INFORMATION.
- MECHANICAL UNITS & LAYOUTS SHOWN ARE FOR INFORMATION ONLY. REFER TO MECHANICAL DRAWINGS FOR ADDITIONAL INFORMATION.
- REFER TO PLUMBING DRAWINGS FOR ADDITIONAL INFORMATION.
- REFER TO ELECTRICAL DRAWINGS FOR ADDITIONAL INFORMATION.
- REFER TO AXX SERIES SHEETS FOR ENLARGED PLANS, REFLECTED CEILING PLANS, INTERIOR WALL DIMENSIONS, AND INTERIOR WALL TAGS.
- REFER TO WALL AND FLOOR TYPES FOR INSULATION R-VALUES AND FOR RATED ASSEMBLIES.
- REFER TO AXX SERIES SHEETS FOR STAIR, RAMP, AND ELEVATOR DRAWINGS.
- PENETRATIONS OF FIRE-RESISTIVE WALLS, FLOOR-CEILINGS AND ROOF-CEILING SHALL BE PROTECTED AS REQUIRED IN IBC SECTION 713.
- REFER TO A8.01 FOR DOOR SCHEDULE.

## LEGEND

- ◊ WALL TYPES, REF AXX
- ◊ FR FIRE RESISTANT WALL, REF AXX
- ◊ FP FIRE PARTITION WALL, REF AXX
- ◊ FB FIRE BARRIER WALL, REF AXX
- ◊ FLOOR TYPES, REF AXX
- ◊ WINDOW TYPES, REF AXX
- ◊ DOOR TYPES, REF AXX
- ### ROOM NUMBER
- RETAIL UNIT TYPE (REFER TO AXX SERIES SHEETS)
- ◆ KEYNOTE
- FEC = RATED FIRE EXTINGUISHER CABINET (1 OR 2 HR FIRE RATED TO MATCH RATINGS OF WALL). REF TO DETAIL AXXX FOR MORE INFORMATION. FIRE EXTINGUISHERS TO BE INSTALLED IN ACCORDANCE WITH CBC SECTION 906. EXTINGUISHER TYPE 2A10BC



REVISIONS		
Number	Description	Date
01	100% SCHEMATIC DESIGN	05/14/2014
02	50% DESIGN DEVELOPMENT	06/18/2014

Issue Date  
**06/18/14**

Scale

SRA Project Number  
**#0907**

## KEY PLAN LEVEL 1 & 2

A200a

# NEW EL CENTRO COURTHOUSE

EL CENTRO, CALIFORNIA

CLIENT  
Judicial Council of California,  
Administrative Office of the Courts  
455 Golden Gate Ave  
San Francisco, CA 94102

ARCHITECT  
Safdie Rabines Architects  
925 Fort Stockton Drive  
San Diego, CA 92103  
(619) 297-6153  
www.safdiearabines.com

STRUCTURAL ENGINEER  
Thornton Tomasetti  
925 Fort Stockton Drive, Suite 200  
San Diego, CA 92103  
(619) 550-5800

MECHANICAL, ELECTRICAL, AND PLUMBING  
ENGINEER  
Stantec  
14130 Riverside Drive, Suite 201  
Sherman Oaks, CA 91423-2313  
(818) 305-3203

CIVIL ENGINEER  
RBF Consulting  
5050 Avenida Encinas, Suite 260  
Carlsbad, CA 92008-4386  
(760) 933-6243

LANDSCAPE ARCHITECT  
The Office of James Burnett  
550 Lomas Santa Fe, Suite A  
Solana Beach, CA 92075  
(858) 793-6970

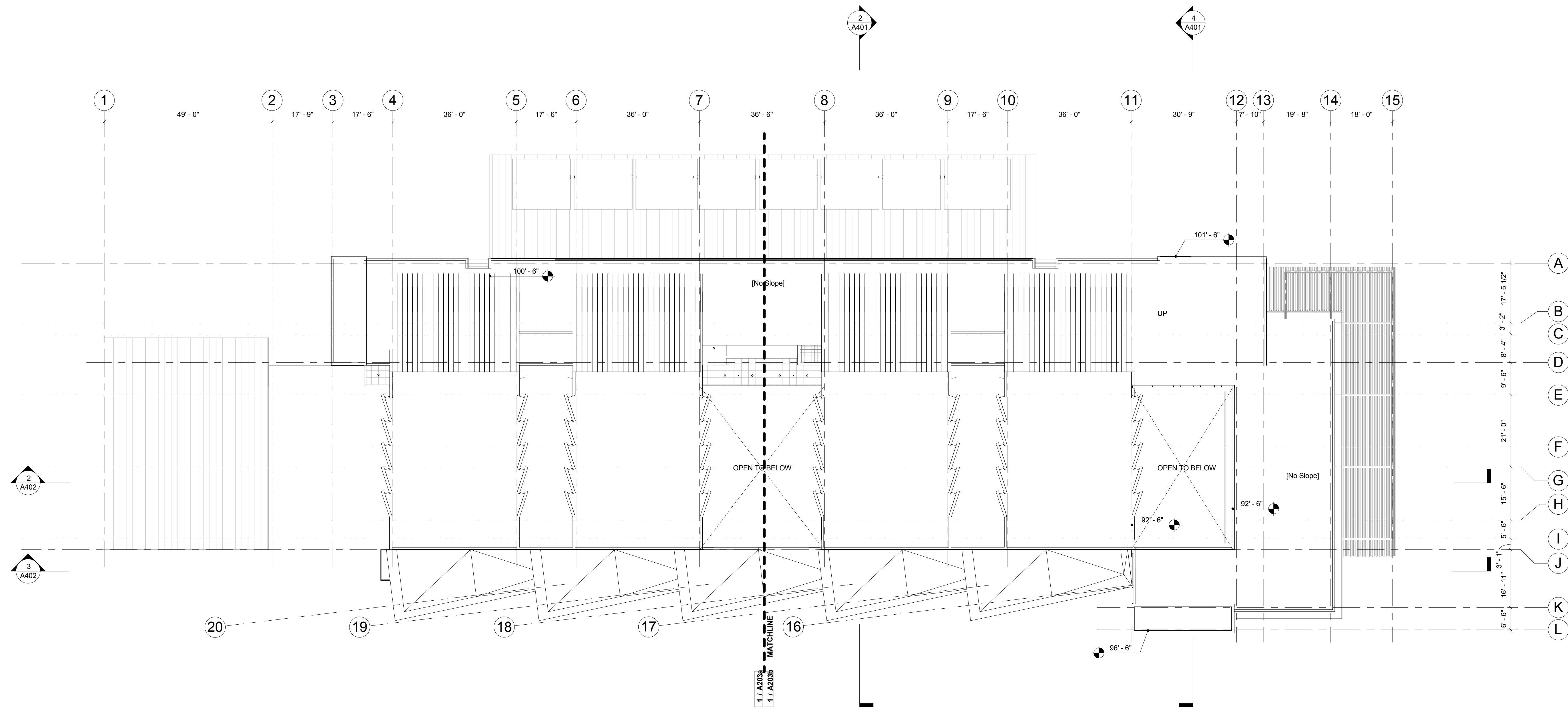
SECURITY CONSULTING  
Kroll Advisory Solutions  
475 Sansome Street  
San Francisco, CA 94111  
(415) 743-4800

FIRE SPRINKLER DESIGN  
Protection Design & Consulting  
2951 Camino del Rio South, #400  
San Diego, CA 92108  
(658) 751-2930

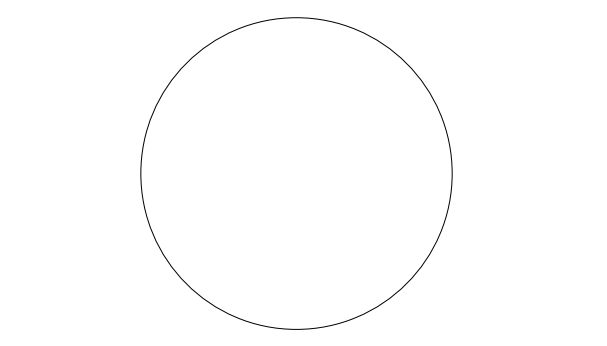
DRY UTILITY CONSULTANT  
Bulsko Utility Design, Inc.  
28835 Jefferson Avenue, Suite A  
Murrieta, CA 92562  
(951) 834-9920

AUDIOVISUAL & ACOUSTICAL CONSULTANT  
Veneklassen Associates  
1711 Sixteenth Street  
Santa Monica, CA 90404  
(310) 450-1733

LIGHTING DESIGN  
Lighting Design Alliance  
2530 Temple Avenue  
Long Beach, CA 90806  
(562) 989-3843



1 ROOF LEVEL 1  
1/16" = 1'-0"



## REVISIONS

Number	Description	Date
01	100% SCHEMATIC DESIGN	05/14/2014
02	50% DESIGN DEVELOPMENT	06/18/2014

Issue Date: 06/18/14 Scale: \_\_\_\_\_

SRA Project Number  
#0907

## ROOF PLAN

A200b

# NEW EL CENTRO COURTHOUSE

EL CENTRO, CALIFORNIA

CLIENT  
**Judicial Council of California,**  
*Administrative Office of the Courts*  
455 Golden Gate Ave  
San Francisco, CA 94102

ARCHITECT  
**Safdie Rabines Architects**  
925 Fort Stockton Drive  
San Diego, CA 92103  
(619) 297-6153  
www.safdiearabines.com

STRUCTURAL ENGINEER  
Thornton Tomasetti  
925 Fort Stockton Drive, Suite 200  
San Diego, CA 92103  
(619) 550-5900

MECHANICAL, ELECTRICAL, AND PLUMBING ENGINEER  
Slantec  
14130 Riverside Drive, Suite 201  
Sherman Oaks, CA 91423-2313  
(818) 305-3203

CIVIL ENGINEER  
RBF Consulting  
5050 Avenida Encinas, Suite 260  
Carlsbad, CA 92008-4386  
(760) 933-6243

LANDSCAPE ARCHITECT  
The Office of James Burnett  
550 Lomas Santa Fe, Suite A  
Solana Beach, CA 92075  
(858) 793-6970

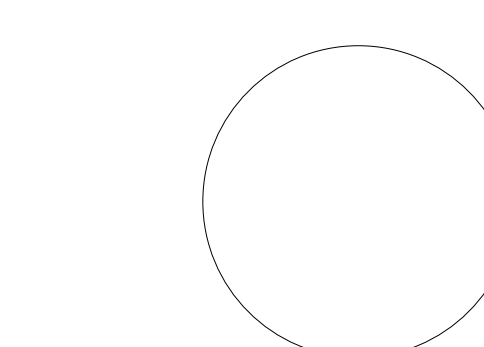
SECURITY CONSULTING  
Kroll Advisory Solutions  
475 Sansome Street  
San Francisco, CA 94111  
(415) 743-4800

FIRE SPRINKLER DESIGN  
Protection Design & Consulting  
2951 Camino del Rio South, #400  
San Diego, CA 92108  
(858) 751-2930

DRY UTILITY CONSULTANT  
Bulsko Utility Design, Inc.  
28835 Jefferson Avenue, Suite A  
Murietta, CA 92562  
(951) 834-9920

AUDIOVISUAL & ACOUSTICAL CONSULTANT  
Veneklassen Associates  
1711 Sixteenth Street  
Santa Monica, CA 90404  
(310) 450-1733

LIGHTING DESIGN  
Lighting Design Alliance  
2830 Temple Avenue  
Long Beach, CA 90806  
(562) 989-3843



REVISIONS		
Number	Description	Date
01	100% SCHEMATIC DESIGN	05/14/2014
02	50% DESIGN DEVELOPMENT	06/18/2014

Issue Date  
**06/18/14**  
Scale  
SRA Project Number  
**#0907**

## FLOOR PLAN LEVEL 1 - WEST

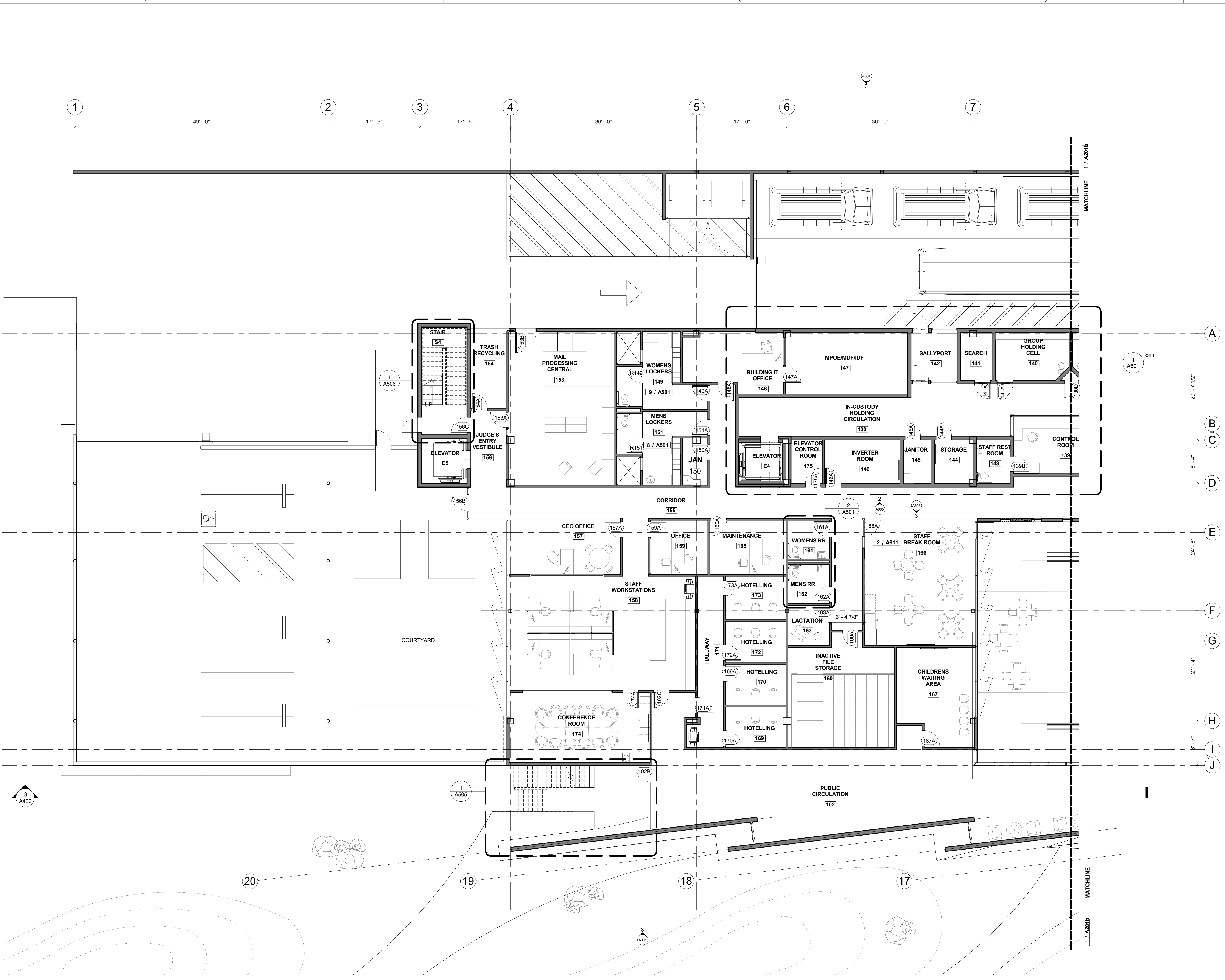
# A201a

### GENERAL NOTES

- KEYNOTES ON THESE SHEETS ARE AN ACCUMULATION OF ITEMS ON THE PLANS, SECTIONS & ELEVATIONS SHEETS, NOT ALL ITEMS ARE FOUND ON EACH SHEET.
- DIMENSIONS SHOWN ARE TYPICAL OF THIS SHEET ONLY, UNLESS NOTED OTHERWISE.
- GRIDLINES ARE SET TO THE CENTER LINE OF COLUMNS OR THE EXTERIOR FACE OF CMU / CONCRETE / WOOD STUDS.
- REFER TO SHEET G-XX FOR SITE ACCESSIBILITY AND EGRESS PLAN.
- REFER TO SHEETS G-0XX, G-0XX & G-0XX FOR EGRESS & LIFE SAFETY PLANS.
- REFER TO SHEETS G-0XX & G-0XX FOR GENERAL SITE & BUILDING ACCESSIBILITY GUIDELINES.
- REFER TO CIVIL DRAWINGS FOR ADDITIONAL GRADING & SITE UTILITY INFORMATION.
- REFER TO LANDSCAPE DRAWINGS FOR ADDITIONAL INFORMATION.
- REFER TO STRUCTURE DRAWINGS FOR ADDITIONAL INFORMATION.
- MECHANICAL UNITS & LAYOUTS SHOWN ARE FOR INFORMATION ONLY. REFER TO MECHANICAL DRAWINGS FOR ADDITIONAL INFORMATION.
- REFER TO PLUMBING DRAWINGS FOR ADDITIONAL INFORMATION.
- REFER TO ELECTRICAL DRAWINGS FOR ADDITIONAL INFORMATION.
- REFER TO AXX SERIES SHEETS FOR ENLARGED PLANS, REFLECTED CEILING PLANS, INTERIOR WALL DIMENSIONS, AND INTERIOR WALL TAGS.
- REFER TO WALL AND FLOOR TYPES FOR INSULATION R-VALUES AND FOR RATED ASSEMBLIES.
- REFER TO AXX SERIES SHEETS FOR STAIR, RAMP, AND ELEVATOR DRAWINGS.
- PENETRATIONS OF FIRE-RESISTIVE WALLS, FLOOR-CEILINGS AND ROOF-CEILING SHALL BE PROTECTED AS REQUIRED IN IBC SECTION 713.
- REFER TO A8.01 FOR DOOR SCHEDULE.

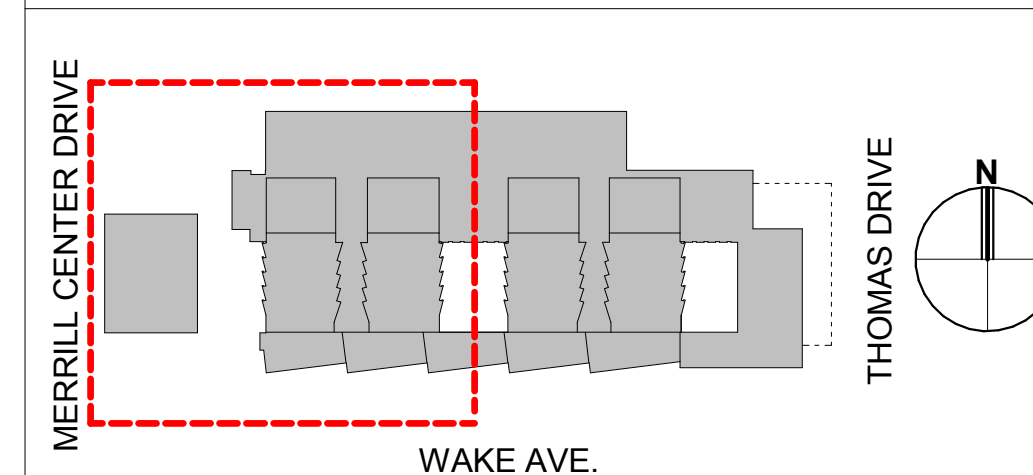
### LEGEND

- ◊+ WALL TYPES, REF AXX
  - ◊FR FIRE RESISTANT WALL, REF AXX
  - ◊FP FIRE PARTITION WALL, REF AXX
  - ◊FB FIRE BARRIER WALL, REF AXX
  - ◊+ FLOOR TYPES, REF AXX
  - ◊+ WINDOW TYPES, REF AXX
  - ◊+ DOOR TYPES, REF AXX
  - ### ROOM NUMBER (REFER TO AXX SERIES SHEETS)
  - RETAL UNIT TYPE (REFER TO AXX SERIES SHEETS)
  - KEYNOTE
- FEC** = RATED FIRE EXTINGUISHER CABINET (1 OR 2 HR FIRE RATED TO MATCH RATINGS OF WALL). REF TO DETAIL 4A712 FOR MORE INFORMATION. FIRE EXTINGUISHERS TO BE INSTALLED IN ACCORDANCE WITH CBC SECTION 906. EXTINGUISHER TYPE 2A10BC



1 FLOOR PLAN - LEVEL 1 - WEST  
1/8" = 1'-0"

### KEY PLAN



# NEW EL CENTRO COURTHOUSE

EL CENTRO, CALIFORNIA

CLIENT  
**Judicial Council of California,**  
*Administrative Office of the Courts*  
455 Golden Gate Ave  
San Francisco, CA 94102

ARCHITECT  
**Safdie Rabines Architects**  
825 Fort Stockton Drive  
San Diego, CA 92103  
(619) 297-6153  
www.safdiearabines.com

STRUCTURAL ENGINEER  
Thornton Tomasetti  
925 Fort Stockton Drive, Suite 200  
San Diego, CA 92103  
(619) 550-5900

MECHANICAL, ELECTRICAL, AND PLUMBING ENGINEER  
Slantec  
14130 Riverside Drive, Suite 201  
Sherman Oaks, CA 91423-2313  
(818) 305-3203

CIVIL ENGINEER  
RBF Consulting  
5050 Avenida Encinas, Suite 260  
Carlsbad, CA 92008-4386  
(760) 933-6243

LANDSCAPE ARCHITECT  
The Office of James Burnett  
550 Lomas Santa Fe, Suite A  
Solana Beach, CA 92075  
(858) 793-6970

SECURITY CONSULTING  
Kroll Advisory Solutions  
475 Sansome Street  
San Francisco, CA 94111  
(415) 743-4800

FIRE SPRINKLER DESIGN  
Protection Design & Consulting  
2951 Camino del Rio South, #400  
San Diego, CA 92108  
(858) 751-2930

DRY UTILITY CONSULTANT  
Bulsko Utility Design, Inc.  
28835 Jefferson Avenue, Suite A  
Murreeta, CA 92562  
(951) 834-9920

AUDIOVISUAL & ACOUSTICAL CONSULTANT  
Veneklassen Associates  
1711 Sutherland Street  
Santa Monica, CA 90404  
(310) 450-1733

LIGHTING DESIGN  
Lighting Design Alliance  
2530 Temple Avenue  
Long Beach, CA 90806  
(562) 989-3843

REVISIONS		
Number	Description	Date
01	100% SCHEMATIC DESIGN	05/14/2014
02	50% DESIGN DEVELOPMENT	06/18/2014

Issue Date  
**06/18/14**  
Scale  
SRA Project Number  
**#0907**

## FLOOR PLAN LEVEL 1 - EAST

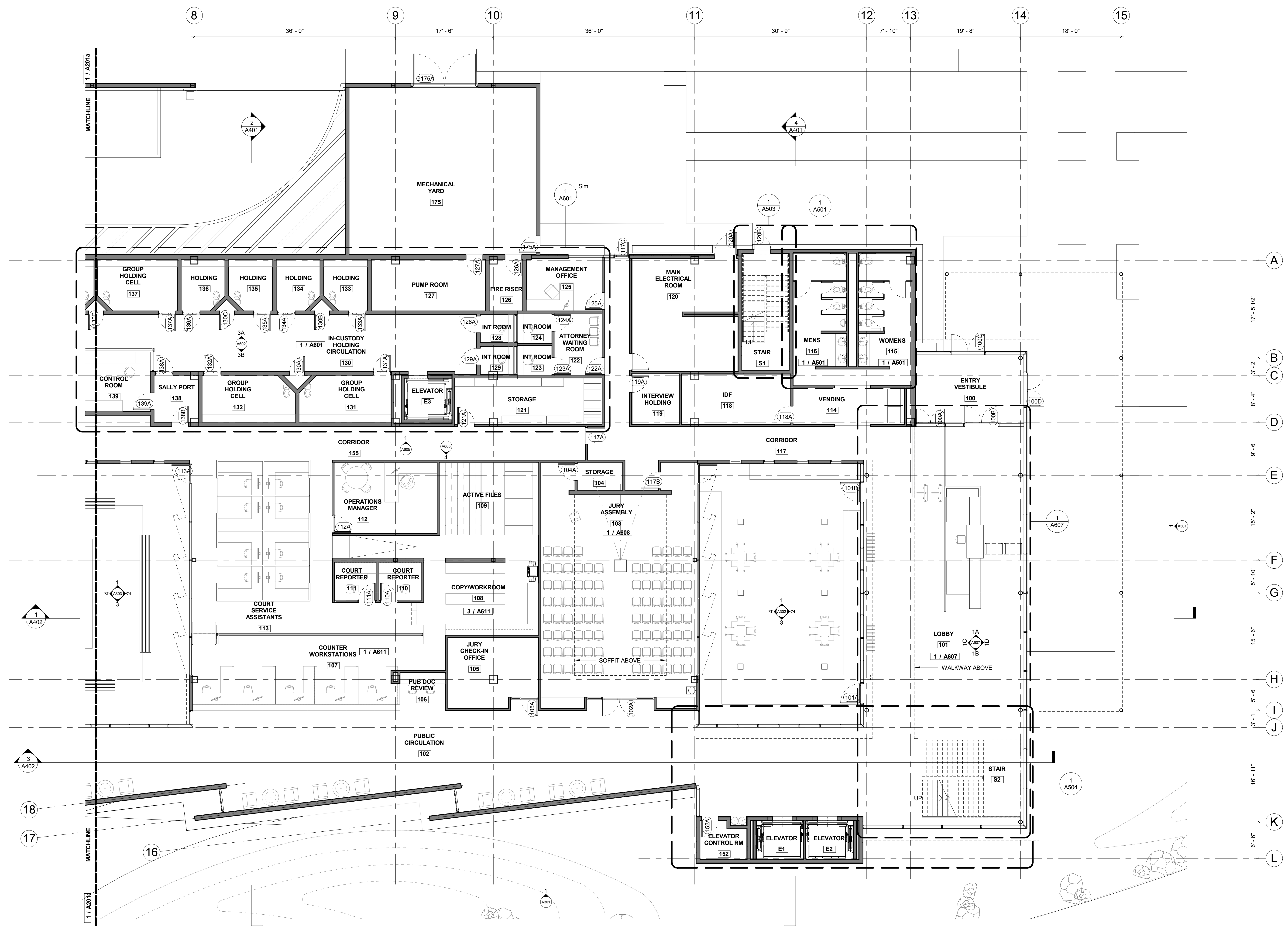
# A201b

### GENERAL NOTES

- KEYNOTES ON THESE SHEETS ARE AN ACCUMULATION OF ITEMS ON THE PLANS, SECTIONS & ELEVATIONS SHEETS, NOT ALL ITEMS ARE FOUND ON EACH SHEET.
- DIMENSIONS SHOWN ARE TYPICAL OF THIS SHEET ONLY, UNLESS NOTED OTHERWISE.
- GRIDLINES ARE SET TO THE CENTER LINE OF COLUMNS OR THE EXTERIOR FACE OF CMU / CONCRETE / WOOD STUDS.
- REFER TO SHEET G-XX FOR SITE ACCESSIBILITY AND EGRESS PLAN.
- REFER TO SHEETS G-0XX, G-0XX & G-0XX FOR EGRESS & LIFE SAFETY PLANS.
- REFER TO SHEETS G-0XX & G-0XX FOR GENERAL SITE & BUILDING ACCESSIBILITY GUIDELINES.
- REFER TO CIVIL DRAWINGS FOR ADDITIONAL GRADING & SITE UTILITY INFORMATION.
- REFER TO LANDSCAPE DRAWINGS FOR ADDITIONAL INFORMATION.
- REFER TO STRUCTURE DRAWINGS FOR ADDITIONAL INFORMATION.
- MECHANICAL UNITS & LAYOUTS SHOWN ARE FOR INFORMATION ONLY. REFER TO MECHANICAL DRAWINGS FOR ADDITIONAL INFORMATION.
- REFER TO ELECTRICAL DRAWINGS FOR ADDITIONAL INFORMATION.
- REFER TO AXS SERIES SHEETS FOR ENLARGED PLANS, REFLECTED CEILING PLANS, INTERIOR WALL DIMENSIONS, AND INTERIOR WALL TAGS.
- REFER TO WALL AND FLOOR TYPES FOR INSULATION R-VALUES AND FOR RATED ASSEMBLIES.
- REFER TO AXS SERIES SHEETS FOR STAIR, RAMP, AND ELEVATOR DRAWINGS.
- PENETRATIONS OF FIRE-RESISTIVE WALLS, FLOOR-CEILING AND ROOF-CEILING SHALL BE PROTECTED AS REQUIRED IN IBC SECTION 713.
- REFER TO A8.01 FOR DOOR SCHEDULE.

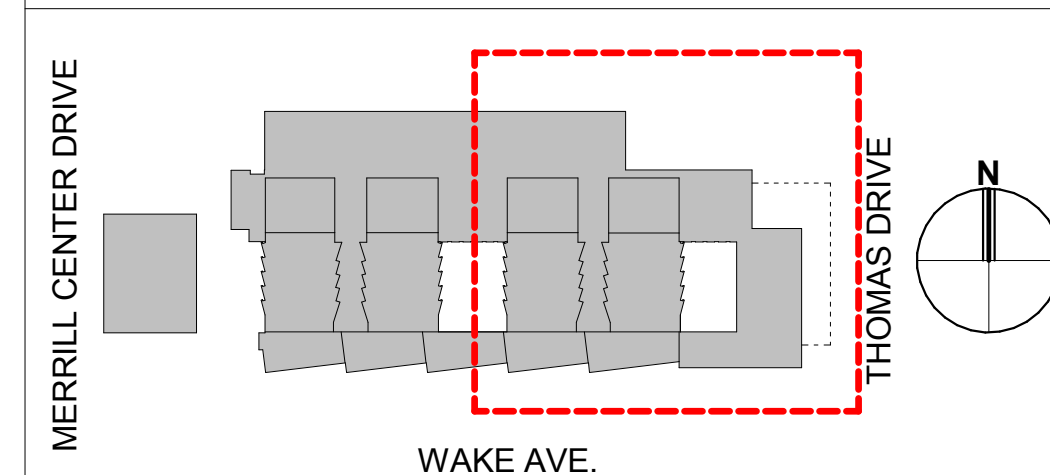
### LEGEND

- ◊ WALL TYPES, REF AXS
  - ◊ FR FIRE RESISTANT WALL, REF AXS
  - ◊ FP FIRE PARTITION WALL, REF AXS
  - ◊ FB FIRE BARRIER WALL, REF AXS
  - ◊ FLOOR TYPES, REF AXS
  - ◊ WINDOW TYPES, REF AXS
  - ◊ DOOR TYPES, REF AXS
  - ### ROOM NUMBER (REFER TO AXS SERIES SHEETS)
  - RETAIL UNIT TYPE (REFER TO AXS SERIES SHEETS)
  - ◆ KEYNOTE
- FEC** = RATED FIRE EXTINGUISHER CABINET (1 OR 2 HR FIRE RATED TO MATCH RATINGS OF WALL). REF TO DETAIL AXS FOR MORE INFORMATION. FIRE EXTINGUISHERS TO BE INSTALLED IN ACCORDANCE WITH CBC SECTION 906. EXTINGUISHER TYPE 2A10BC



1 FLOOR PLAN - LEVEL 1 - EAST  
1/8" = 1'-0"

### KEY PLAN



# NEW EL CENTRO COURTHOUSE

EL CENTRO, CALIFORNIA

CLIENT  
**Judicial Council of California,**  
*Administrative Office of the Courts*  
455 Golden Gate Ave  
San Francisco, CA 94102

ARCHITECT  
**Safdie Rabines Architects**  
925 Fort Stockton Drive  
San Diego, CA 92103  
(619) 297-6153  
www.safdiebabines.com

STRUCTURAL ENGINEER  
Thornton Tomasetti  
925 Fort Stockton Drive, Suite 200  
San Diego, CA 92103  
(619) 550-5900

MECHANICAL, ELECTRICAL, AND PLUMBING ENGINEER  
Slantec  
14130 Riverside Drive, Suite 201  
Sherman Oaks, CA 91423-2313  
(818) 305-3203

CIVIL ENGINEER  
RBF Consulting  
5050 Avenida Encinas, Suite 260  
Carlsbad, CA 92008-4386  
(760) 933-6243

LANDSCAPE ARCHITECT  
The Office of James Burnett  
550 Lomas Santa Fe, Suite A  
Solana Beach, CA 92075  
(858) 793-6970

SECURITY CONSULTING  
Kroll Advisory Solutions  
475 Sansome Street  
San Francisco, CA 94111  
(415) 743-4800

FIRE SPRINKLER DESIGN  
Protection Design & Consulting  
2951 Camino del Rio South, #400  
San Diego, CA 92108  
(858) 751-2930

DRY UTILITY CONSULTANT  
Bulsko Utility Design, Inc.  
28835 Jefferson Avenue, Suite A  
Murrieta, CA 92562  
(951) 834-9920

AUDIOVISUAL & ACOUSTICAL CONSULTANT  
Veneklassen Associates  
1711 Sutherland Street  
Santa Monica, CA 90404  
(310) 450-1733

LIGHTING DESIGN  
Lighting Design Alliance  
2830 Temple Avenue  
Long Beach, CA 90806  
(562) 989-3843

REVISIONS		
Number	Description	Date
01	100% SCHEMATIC DESIGN	05/14/2014
02	50% DESIGN DEVELOPMENT	06/18/2014

Issue Date: **06/18/14** Scale: \_\_\_\_\_  
SRA Project Number: **#0907**

## FLOOR PLAN LEVEL 2 - WEST

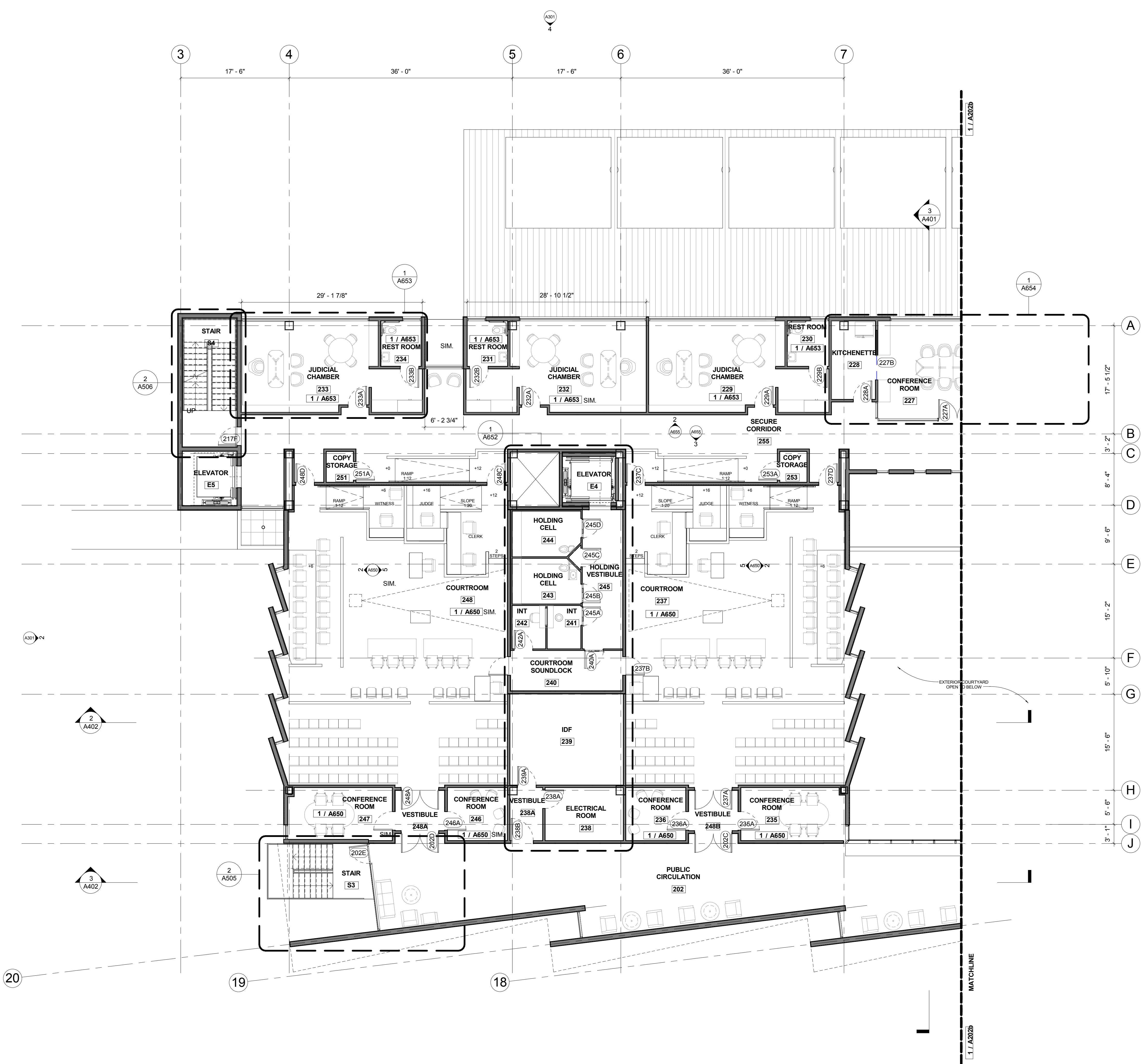
# A202a

### GENERAL NOTES

- KEYNOTES ON THESE SHEETS ARE AN ACCUMULATION OF ITEMS ON THE PLANS, SECTIONS & ELEVATIONS SHEETS, NOT ALL ITEMS ARE FOUND ON EACH SHEET.
- DIMENSIONS SHOWN ARE TYPICAL OF THIS SHEET ONLY, UNLESS NOTED OTHERWISE.
- GRIDLINES ARE SET TO THE CENTER LINE OF COLUMNS OR THE EXTERIOR FACE OF CMU / CONCRETE / WOOD STUDS.
- REFER TO SHEET G-XX FOR SITE ACCESSIBILITY AND EGRESS PLAN.
- REFER TO SHEETS G-0XX, G-0XX & G-0XX FOR EGRESS & LIFE SAFETY PLANS.
- REFER TO SHEETS G-0XX & G-0XX FOR GENERAL SITE & BUILDING ACCESSIBILITY GUIDELINES.
- REFER TO CIVIL DRAWINGS FOR ADDITIONAL GRADING & SITE UTILITY INFORMATION.
- REFER TO LANDSCAPE DRAWINGS FOR ADDITIONAL INFORMATION.
- REFER TO STRUCTURE DRAWINGS FOR ADDITIONAL INFORMATION.
- MECHANICAL UNITS & LAYOUTS SHOWN ARE FOR INFORMATION ONLY. REFER TO MECHANICAL DRAWINGS FOR ADDITIONAL INFORMATION.
- REFER TO PLUMBING DRAWINGS FOR ADDITIONAL INFORMATION.
- REFER TO ELECTRICAL DRAWINGS FOR ADDITIONAL INFORMATION.
- REFER TO AXX SERIES SHEETS FOR ENLARGED PLANS, REFLECTED CEILING PLANS, INTERIOR WALL DIMENSIONS, AND INTERIOR WALL TAGS.
- REFER TO WALL AND FLOOR TYPES FOR INSULATION R-VALUES AND FOR RATED ASSEMBLIES.
- REFER TO AXX SERIES SHEETS FOR STAIR, RAMP, AND ELEVATOR DRAWINGS.
- PENETRATIONS OF FIRE-RESISTIVE WALLS, FLOOR-CEILING AND ROOF-CEILING SHALL BE PROTECTED AS REQUIRED IN IBC SECTION 713.
- REFER TO A8.01 FOR DOOR SCHEDULE.

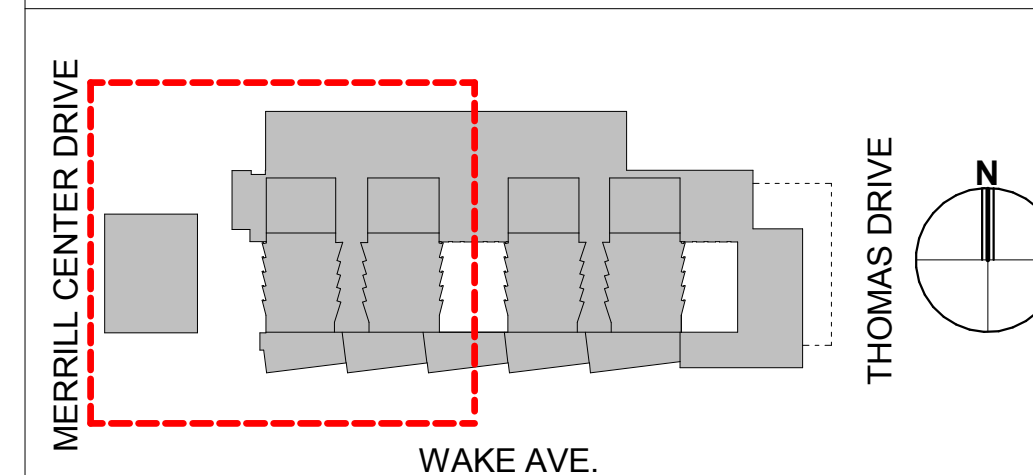
### LEGEND

- WALL TYPES, REF AXX
  - FR FIRE RESISTANT WALL, REF AXX
  - FP FIRE PARTITION WALL, REF AXX
  - FB FIRE BARRIER WALL, REF AXX
  - FLOOR TYPES, REF AXX
  - WINDOW TYPES, REF AXX
  - DOOR TYPES, REF AXX
  - ROOM NUMBER
  - UNIT TYPE (REFER TO AXX SERIES SHEETS)
  - KEYNOTE
- FEC** = RATED FIRE EXTINGUISHER CABINET (1 OR 2 HR FIRE RATED TO MATCH RATINGS OF WALL). REF TO DETAIL 4A712 FOR MORE INFORMATION. FIRE EXTINGUISHERS TO BE INSTALLED IN ACCORDANCE WITH CBC SECTION 906. EXTINGUISHER TYPE 2A10BC



1 FLOOR PLAN - LEVEL 2 - WEST  
1/8" = 1'-0"

### KEY PLAN



# NEW EL CENTRO COURTHOUSE

EL CENTRO, CALIFORNIA

CLIENT  
**Judicial Council of California,  
Administrative Office of the Courts**  
455 Golden Gate Ave.  
San Francisco, CA 94102

ARCHITECT  
**Saldie Rabines Architects**  
925 Fort Stockton Drive  
San Diego, CA 92103  
(619) 297-6153  
www.saldierabines.com

STRUCTURAL ENGINEER  
Thornton Tomasetti  
925 Fort Stockton Drive, Suite 200  
San Diego, CA 92103  
(619) 550-5800

MECHANICAL, ELECTRICAL, AND PLUMBING  
ENGINEER

Slantec  
14130 Riverside Drive, Suite 201  
Sherman Oaks, CA 91423-2313  
(818) 305-3203

CIVIL ENGINEER  
RBF Consulting  
5050 Avenida Encinas, Suite 260  
Carlsbad, CA 92008-4386  
(760) 933-6243

LANDSCAPE ARCHITECT  
The Office of James Burnett  
550 Lomas Santa Fe, Suite A  
Solana Beach, CA 92075  
(858) 793-6970

SECURITY CONSULTING  
Kroll Advisory Solutions  
475 Sansome Street  
San Francisco, CA 94111  
(415) 743-4800

FIRE SPRINKLER DESIGN  
Protection Design & Consulting  
2951 Camino del Rio South, #400  
San Diego, CA 92108  
(858) 751-2930

DRY UTILITY CONSULTANT  
Busko Utility Design, Inc.  
28835 Jefferson Avenue, Suite A  
Murrieta, CA 92562  
(951) 834-9920

AUDIO/VISUAL & ACOUSTICAL CONSULTANT  
Veneklassen Associates  
1711 Sutherland Street  
Santa Monica, CA 90404  
(310) 450-1733

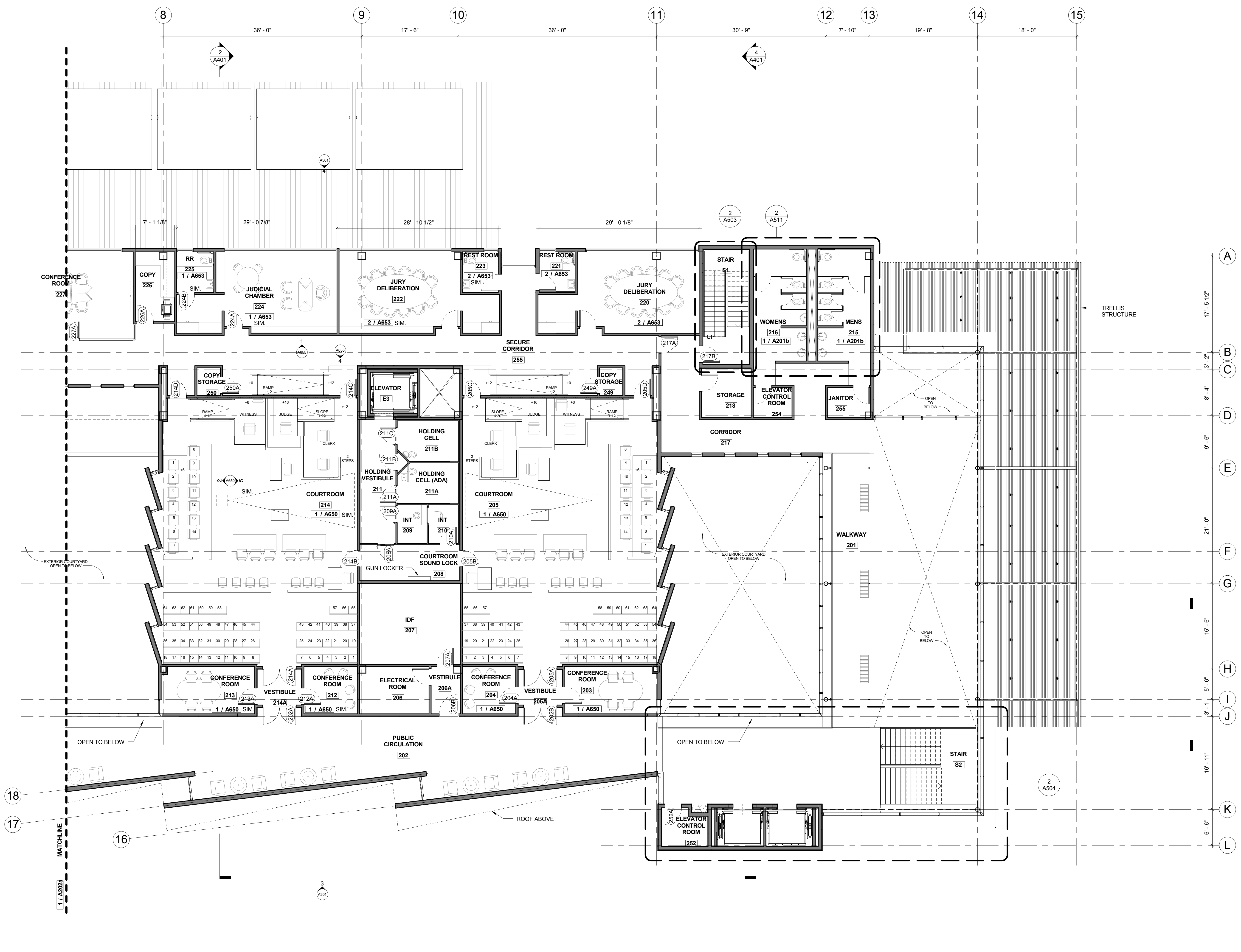
LIGHTING DESIGN  
Lighting Design Alliance  
2530 Temple Avenue  
Long Beach, CA 90806  
(562) 989-3843

## GENERAL NOTES

- KEYNOTES ON THESE SHEETS ARE AN ACCUMULATION OF ITEMS ON THE PLANS, SECTIONS & ELEVATIONS SHEETS, NOT ALL ITEMS ARE FOUND ON EACH SHEET.
- DIMENSIONS SHOWN ARE TYPICAL OF THIS SHEET ONLY, UNLESS NOTED OTHERWISE.
- GRIDLINES ARE SET TO THE CENTER LINE OF COLUMNS OR THE EXTERIOR FACE OF CMU / CONCRETE / WOOD STUDS.
- REFER TO SHEET G-XX FOR SITE ACCESSIBILITY AND EGRESS PLAN.
- REFER TO SHEETS G-0XX, G-0XX & G-0XX FOR EGRESS & LIFE SAFETY PLANS.
- REFER TO SHEETS G-0XX & G-0XX FOR GENERAL SITE & BUILDING ACCESSIBILITY GUIDELINES.
- REFER TO CIVIL DRAWINGS FOR ADDITIONAL GRADING & SITE UTILITY INFORMATION.
- REFER TO LANDSCAPE DRAWINGS FOR ADDITIONAL INFORMATION.
- REFER TO STRUCTURE DRAWINGS FOR ADDITIONAL INFORMATION.
- MECHANICAL UNITS & LAYOUTS SHOWN ARE FOR INFORMATION ONLY. REFER TO MECHANICAL DRAWINGS FOR ADDITIONAL INFORMATION.
- REFER TO ELECTRICAL DRAWINGS FOR ADDITIONAL INFORMATION.
- REFER TO AX SERIES SHEETS FOR ENLARGED PLANS, REFLECTED CEILING PLANS, INTERIOR WALL DIMENSIONS, AND INTERIOR WALL TAGS.
- REFER TO WALL AND FLOOR TYPES FOR INSULATION R-VALUES AND FOR RATED ASSEMBLIES.
- REFER TO AX SERIES SHEETS FOR STAIR, RAMP, AND ELEVATOR DRAWINGS.
- PENETRATIONS OF FIRE-RESISTIVE WALLS, FLOOR-CEILINGS AND ROOF-CEILINGS SHALL BE PROTECTED AS REQUIRED IN IBC SECTION 713.
- REFER TO A8.01 FOR DOOR SCHEDULE.

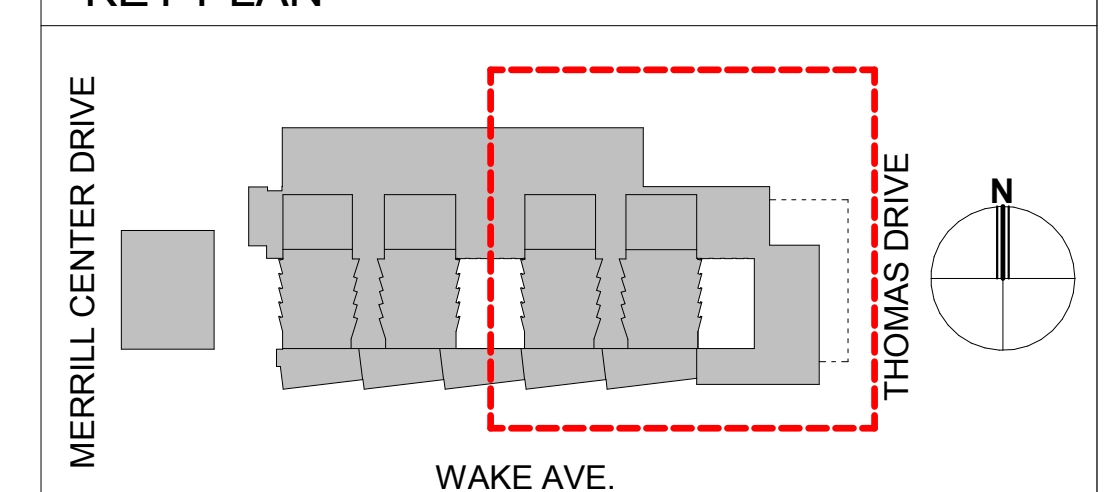
## LEGEND

- WALL TYPES, REF AXX
  - FIRE RESISTANT WALL, REF AXX
  - FIRE PARTITION WALL, REF AXX
  - FIRE BARRIER WALL, REF AXX
  - FLOOR TYPES, REF AXX
  - WINDOW TYPES, REF AXX
  - DOOR TYPES, REF AXX
  - ROOM NUMBER (REF AXX)
  - RETAIL UNIT TYPE (REF AXX)
  - KEYNOTE
- FEC** = RATED FIRE EXTINGUISHER CABINET (1 OR 2 HR FIRE RATED TO MATCH RATINGS OF WALL). REF TO DETAIL 4A712 FOR MORE INFORMATION. FIRE EXTINGUISHERS TO BE INSTALLED IN ACCORDANCE WITH CBC SECTION 906. EXTINGUISHER TYPE 2A10BC



1 FLOOR PLAN - LEVEL 2 - EAST  
1/8" = 1'-0"

## KEY PLAN



### REVISIONS

Number	Description	Date
01	100% SCHEMATIC DESIGN	05/14/2014
02	50% DESIGN DEVELOPMENT	06/18/2014

Issue Date: 06/18/14  
Scale: \_\_\_\_\_  
SRA Project Number: #0907

## FLOOR PLAN LEVEL 2 - EAST

# A202b

# NEW EL CENTRO COURTHOUSE

EL CENTRO, CALIFORNIA

CLIENT  
**Judicial Council of California,**  
*Administrative Office of the Courts*  
455 Golden Gate Ave  
San Francisco, CA 94102

ARCHITECT  
**Safdie Rabines Architects**  
825 Fort Stockton Drive  
San Diego, CA 92103  
(619) 297-6153  
www.safdiearabines.com

STRUCTURAL ENGINEER  
Thornton Tomasetti  
925 Fort Stockton Drive, Suite 200  
San Diego, CA 92103  
(619) 550-5900

MECHANICAL, ELECTRICAL, AND PLUMBING ENGINEER  
Slantec  
14130 Riverside Drive, Suite 201  
Sherman Oaks, CA 91423-2313  
(818) 305-3203

CIVIL ENGINEER  
RBF Consulting  
5050 Avenida Encinas, Suite 260  
Carlsbad, CA 92008-4386  
(760) 933-6243

LANDSCAPE ARCHITECT  
The Office of James Burnett  
550 Lomas Santa Fe, Suite A  
Solana Beach, CA 92075  
(858) 793-6970

SECURITY CONSULTING  
Kroll Advisory Solutions  
475 Sansome Street  
San Francisco, CA 94111  
(415) 743-4800

FIRE SPRINKLER DESIGN  
Protection Design & Consulting  
2951 Camino del Rio South, #400  
San Diego, CA 92108  
(858) 751-2930

DRY UTILITY CONSULTANT  
Bulsko Utility Design, Inc.  
28835 Jefferson Avenue, Suite A  
Murreta, CA 92562  
(951) 834-9920

AUDIOVISUAL & ACOUSTICAL CONSULTANT  
Veneklassen Associates  
1711 Sixteenth Street  
Santa Monica, CA 90404  
(310) 450-1733

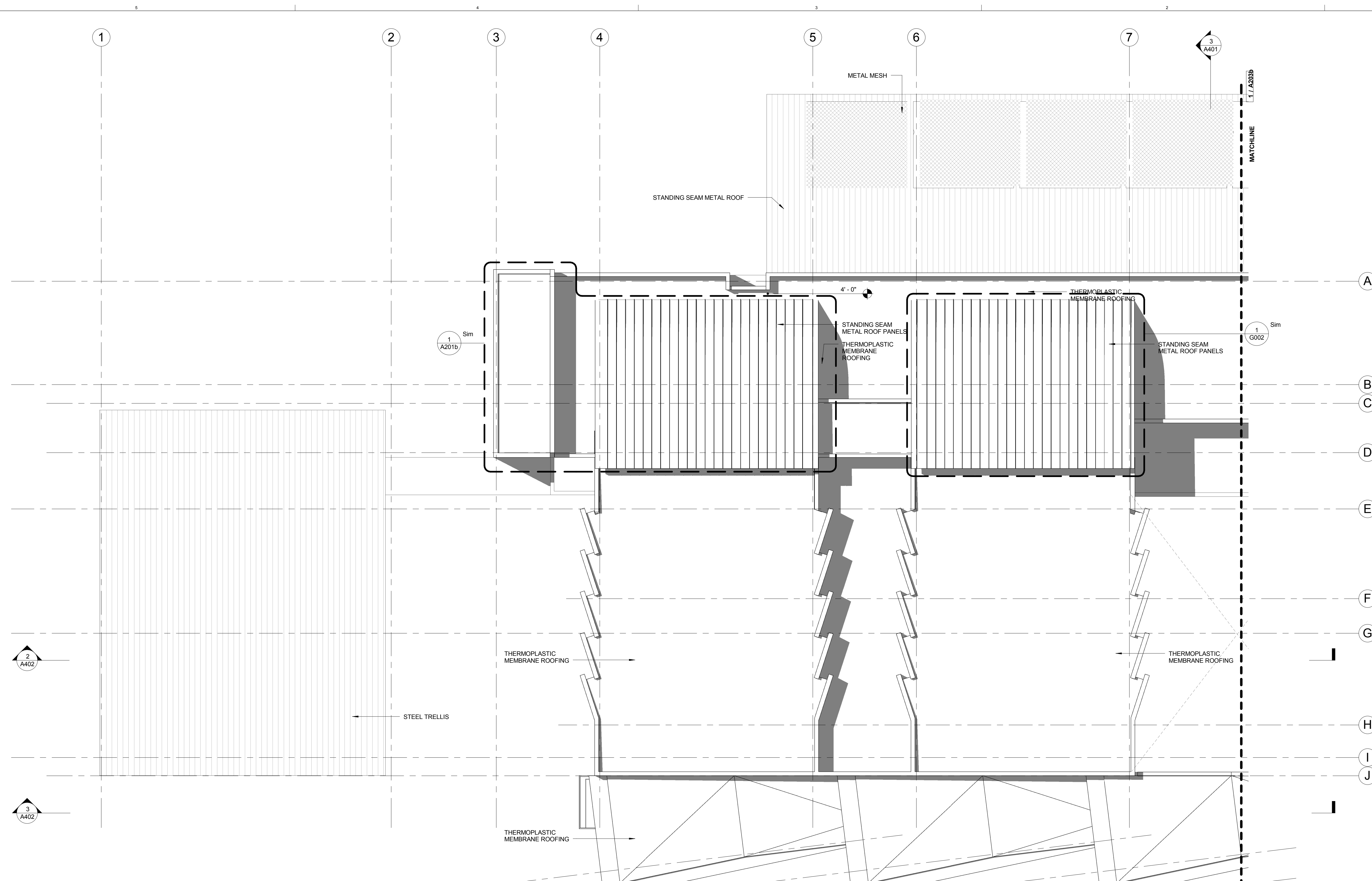
LIGHTING DESIGN  
Lighting Design Alliance  
2630 Temple Avenue  
Long Beach, CA 90806  
(562) 989-3843

## GENERAL NOTES

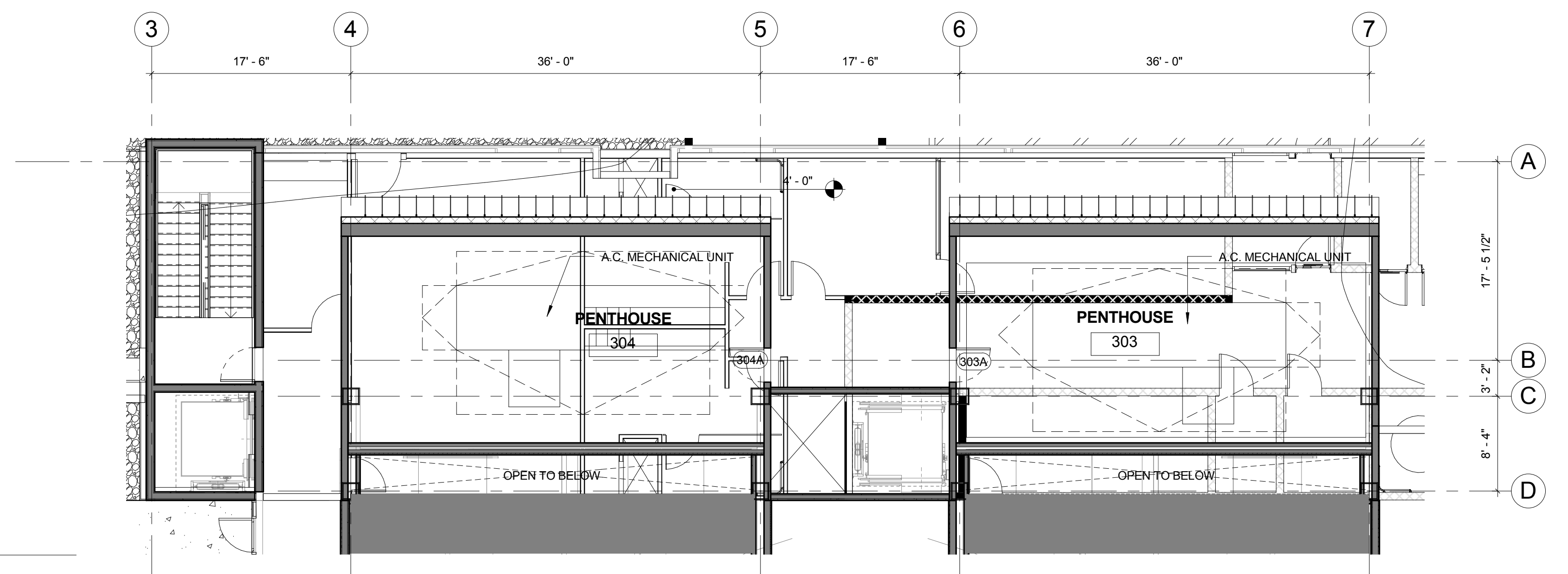
- KEYNOTES ON THESE SHEETS ARE AN ACCUMULATION OF ITEMS ON THE PLANS, SECTIONS & ELEVATIONS SHEETS. NOT ALL ITEMS ARE FOUND ON EACH SHEET.
- DIMENSIONS SHOWN ARE TYPICAL OF THIS SHEET ONLY, UNLESS NOTED OTHERWISE.
- GRIDLINES ARE SET TO THE CENTER LINE OF COLUMNS OR THE EXTERIOR FACE OF CMU / CONCRETE / WOOD STUDS.
- REFER TO SHEET G-XX FOR SITE ACCESSIBILITY AND EGRESS PLAN.
- REFER TO SHEETS G-0XX, G-0XX & G-0XX FOR EGRESS & LIFE SAFETY PLANS.
- REFER TO SHEETS G-0XX & G-0XX FOR GENERAL SITE & BUILDING ACCESSIBILITY GUIDELINES.
- REFER TO CIVIL DRAWINGS FOR ADDITIONAL GRADING & SITE UTILITY INFORMATION.
- REFER TO LANDSCAPE DRAWINGS FOR ADDITIONAL INFORMATION.
- REFER TO STRUCTURE DRAWINGS FOR ADDITIONAL INFORMATION.
- MECHANICAL UNITS & LAYOUTS SHOWN ARE FOR INFORMATION ONLY. REFER TO MECHANICAL DRAWINGS FOR ADDITIONAL INFORMATION.
- REFER TO PLUMBING DRAWINGS FOR ADDITIONAL INFORMATION.
- REFER TO ELECTRICAL DRAWINGS FOR ADDITIONAL INFORMATION.
- REFER TO AXX SERIES SHEETS FOR ENLARGED PLANS, REFLECTED CEILING PLANS, INTERIOR WALL DIMENSIONS, AND INTERIOR WALL TAGS.
- REFER TO WALL AND FLOOR TYPES FOR INSULATION R-VALUES AND FOR RATED ASSEMBLIES.
- REFER TO AXX SERIES SHEETS FOR STAIR, RAMP, AND ELEVATOR DRAWINGS.
- PENETRATIONS OF FIRE-RESISTIVE WALLS, FLOOR-CEILINGS AND ROOF-CEILINGS SHALL BE PROTECTED AS REQUIRED IN IBC SECTION 713.
- REFER TO A8.01 FOR DOOR SCHEDULE.

## LEGEND

- WALL TYPES, REF AXX
- FR FIRE RESISTANT WALL, REF AXX
- FP FIRE PARTITION WALL, REF AXX
- FB FIRE BARRIER WALL, REF AXX
- FLOOR TYPES, REF AXX
- WINDOW TYPES, REF AXX
- DOOR TYPES, REF AXX
- ### ROOM NUMBER
- RETAIL UNIT TYPE (REFER TO AXX SERIES SHEETS)
- KEYNOTE
- FEC = RATED FIRE EXTINGUISHER CABINET (1 OR 2 HR FIRE RATED TO MATCH RATINGS OF WALL). REF TO DETAIL 4A712 FOR MORE INFORMATION. FIRE EXTINGUISHERS TO BE INSTALLED IN ACCORDANCE WITH CBC SECTION 906. EXTINGUISHER TYPE 2A10BC

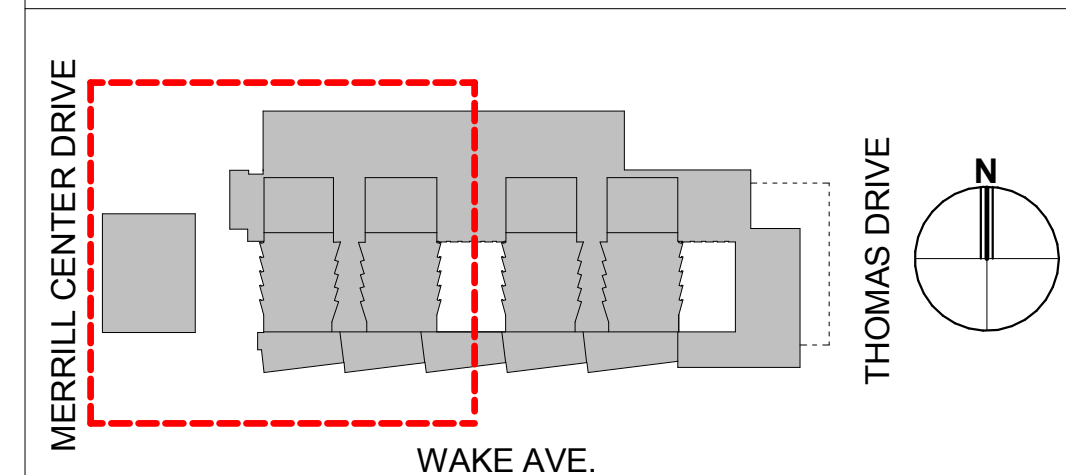


20  
1 ROOF PLAN - WEST  
1/8" = 1'-0"



3 PENTHOUSE PLAN WEST  
1/8" = 1'-0"

## KEY PLAN



REVISIONS		
Number	Description	Date
01	100% SCHEMATIC DESIGN	05/14/2014
02	50% DESIGN DEVELOPMENT	06/18/2014

Issue Date  
**06/18/14**  
Scale  
SRA Project Number  
**#0907**

## ROOF PLAN WEST

A203a



# NEW EL CENTRO COURTHOUSE

EL CENTRO, CALIFORNIA

CLIENT  
**Judicial Council of California,**  
 Administrative Office of the Courts  
 455 Golden Gate Ave  
 San Francisco, CA 94102

ARCHITECT  
**Safdie Rabines Architects**  
 925 Fort Stockton Drive  
 San Diego, CA 92103  
 (619) 297-6153  
 www.safdie-rabines.com

STRUCTURAL ENGINEER  
 Thornton Tomasetti  
 925 Fort Stockton Drive, Suite 200  
 San Diego, CA 92103  
 (619) 550-5900

MECHANICAL, ELECTRICAL, AND PLUMBING ENGINEER  
 Stantec  
 14130 Riverside Drive, Suite 201  
 Sherman Oaks, CA 91423-2313  
 (818) 305-3203

CIVIL ENGINEER  
 RBF Consulting  
 5050 Avenida Encinas, Suite 260  
 Carlsbad, CA 92008-4386  
 (760) 933-6243

LANDSCAPE ARCHITECT  
 The Office of James Burnett  
 550 Lomas Santa Fe, Suite A  
 Solana Beach, CA 92075  
 (858) 793-6970

SECURITY CONSULTING  
 Kroll Advisory Solutions  
 475 Sansome Street  
 San Francisco, CA 94111  
 (415) 743-4800

FIRE SPRINKLER DESIGN  
 Protection Design & Consulting  
 2951 Camino del Rio South, #400  
 San Diego, CA 92108  
 (858) 751-2930

DRY UTILITY CONSULTANT  
 Bulsko Utility Design, Inc.  
 28835 Jefferson Avenue, Suite A  
 Murrieta, CA 92562  
 (951) 834-9920

AUDIO/VISUAL & ACOUSTICAL CONSULTANT  
 Veneklassen Associates  
 1711 Sutherland Street  
 Santa Monica, CA 90404  
 (310) 450-1733

LIGHTING DESIGN  
 Lighting Design Alliance  
 2830 Temple Avenue  
 Long Beach, CA 90806  
 (562) 989-3843

## GENERAL NOTES

- KEYNOTES ON THESE SHEETS ARE AN ACCUMULATION OF ITEMS ON THE PLANS, SECTIONS & ELEVATIONS SHEETS, NOT ALL ITEMS ARE FOUND ON EACH SHEET.
- DIMENSIONS SHOWN ARE TYPICAL OF THIS SHEET ONLY, UNLESS NOTED OTHERWISE.
- GRIDLINES ARE SET TO THE CENTER LINE OF COLUMNS OR THE EXTERIOR FACE OF CMU/CONCRETE/WOOD STUDS.
- REFER TO SHEET G-XX FOR SITE ACCESSIBILITY AND EGRESS PLAN.
- REFER TO SHEETS G-0XX, G-0XX & G-0XX FOR EGRESS & LIFE SAFETY PLANS.
- REFER TO SHEETS G-0XX & G-0XX FOR GENERAL SITE & BUILDING ACCESSIBILITY GUIDELINES.
- REFER TO CIVIL DRAWINGS FOR ADDITIONAL GRADING & SITE UTILITY INFORMATION.
- REFER TO LANDSCAPE DRAWINGS FOR ADDITIONAL INFORMATION.
- REFER TO STRUCTURE DRAWINGS FOR ADDITIONAL INFORMATION.
- MECHANICAL UNITS & LAYOUTS SHOWN ARE FOR INFORMATION ONLY. REFER TO MECHANICAL DRAWINGS FOR ADDITIONAL INFORMATION.
- REFER TO PLUMBING DRAWINGS FOR ADDITIONAL INFORMATION.
- REFER TO ELECTRICAL DRAWINGS FOR ADDITIONAL INFORMATION.
- REFER TO AXX SERIES SHEETS FOR ENLARGED PLANS, REFLECTED CEILING PLANS, INTERIOR WALL DIMENSIONS, AND INTERIOR WALL TAGS.
- REFER TO WALL AND FLOOR TYPES FOR INSULATION R-VALUES AND FOR RATED ASSEMBLIES.
- REFER TO AXX SERIES SHEETS FOR STAIR, RAMP, AND ELEVATOR DRAWINGS.
- PENETRATIONS OF FIRE-RESISTIVE WALLS, FLOOR-CEILINGS AND ROOF-CEILINGS SHALL BE PROTECTED AS REQUIRED IN IBC SECTION 713.
- REFER TO A8.01 FOR DOOR SCHEDULE.

## LEGEND

- WALL TYPES, REF AXX
  - FR FIRE RESISTANT WALL, REF AXX
  - FP FIRE PARTITION WALL, REF AXX
  - FB FIRE BARRIER WALL, REF AXX
  - FLOOR TYPES, REF AXX
  - W-XX WINDOW TYPES, REF AXX
  - D-XX DOOR TYPES, REF AXX
  - ### ROOM NUMBER
  - RETAIL UNIT TYPE (REFER TO AXX SERIES SHEETS)
  - KEYNOTE
- FEC** = RATED FIRE EXTINGUISHER CABINET (1 OR 2 HR FIRE RATED TO MATCH RATINGS OF WALL). REF TO DETAIL 4A712 FOR MORE INFORMATION. FIRE EXTINGUISHERS TO BE INSTALLED IN ACCORDANCE WITH CBC SECTION 906. EXTINGUISHER TYPE 2A10BC

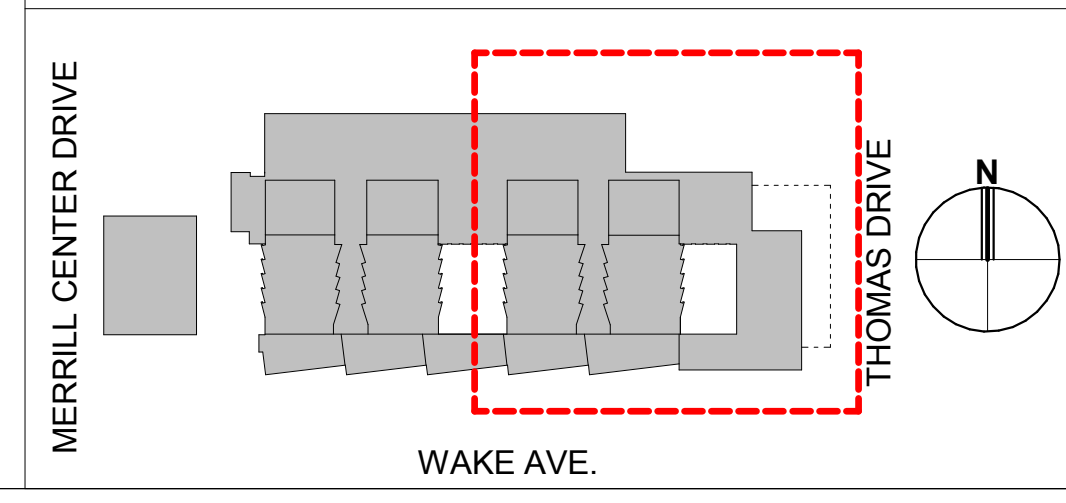
## REVISIONS

Number	Description	Date
01	100% SCHEMATIC DESIGN	05/14/2014
02	50% DESIGN DEVELOPMENT	06/18/2014

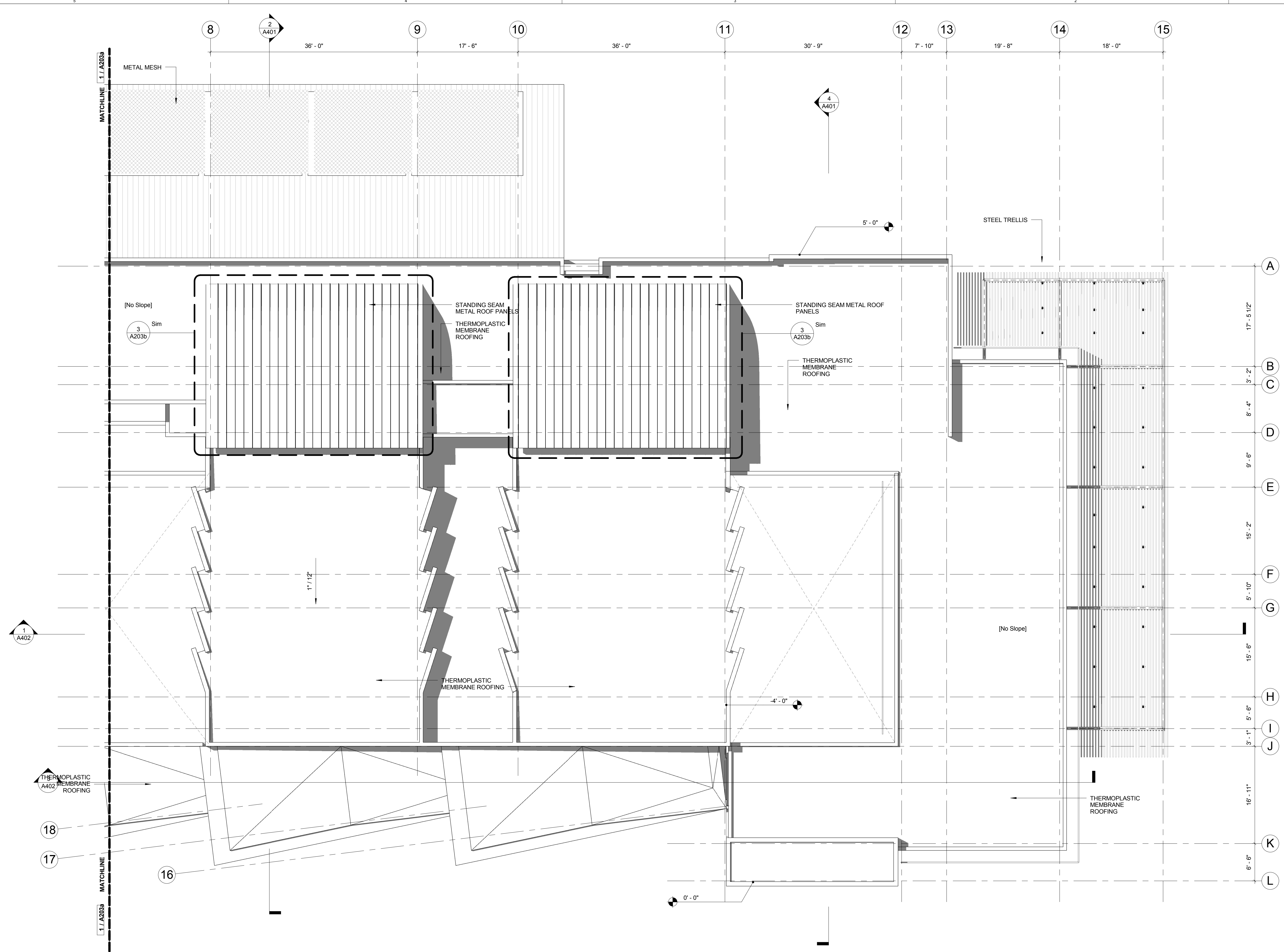
Issue Date: **06/18/14** Scale: \_\_\_\_\_  
 SRA Project Number: **#0907**

## ROOF PLAN EAST

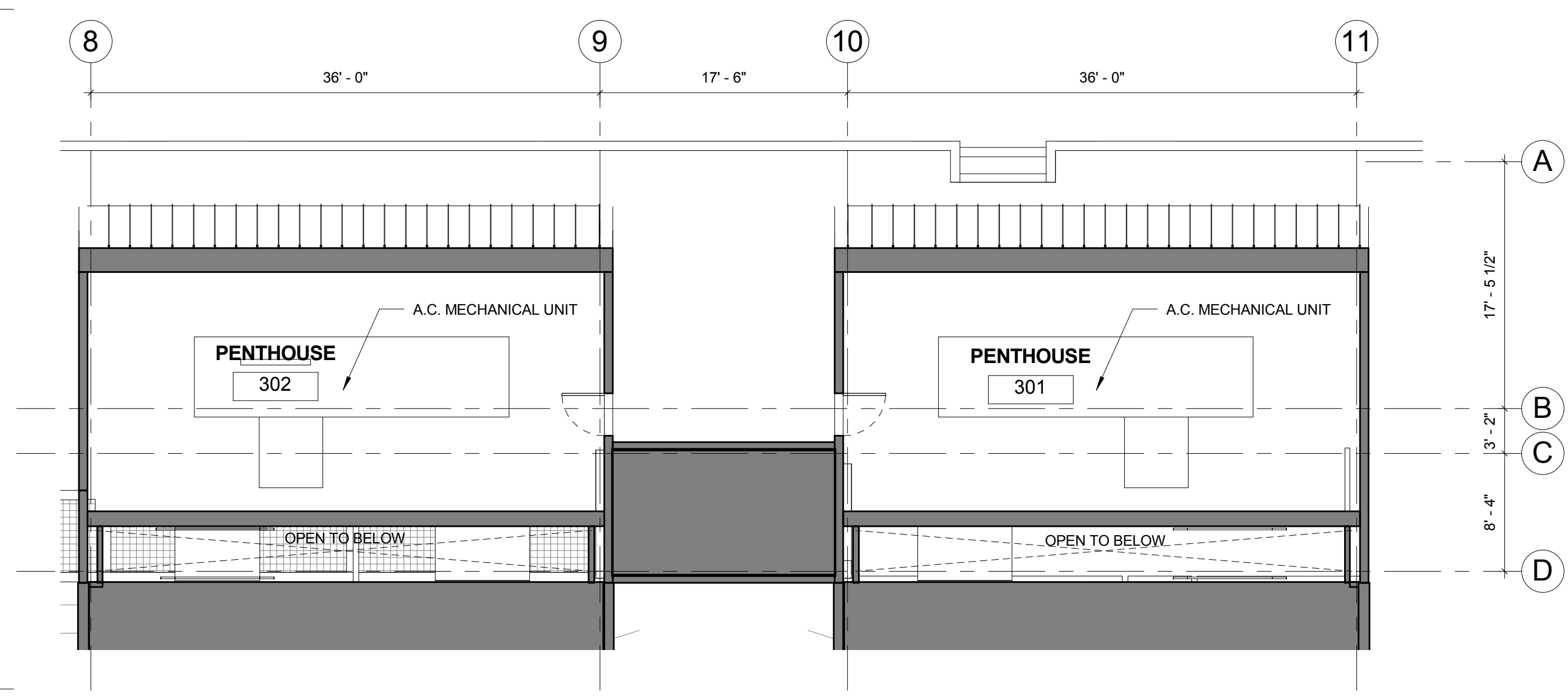
## KEY PLAN



# A203b



1 ROOF PLAN - EAST  
 1/8" = 1'-0"



3 PENTHOUSE PLAN EAST  
 1/8" = 1'-0"