

# Attachment B

## **Building Information**

---

### New Yuba City Courthouse

Superior Court of California

County of Sutter



ADMINISTRATIVE OFFICE  
OF THE COURTS

---

JUDICIAL AND COURT OPERATIONS  
SERVICES DIVISION

JUDICIAL BRANCH CAPITAL PROGRAM OFFICE

## **1.0 Project Description**

The new Courthouse for the Superior Court of California, Sutter County, will be situated in Yuba City . The courthouse is sited on approximately 4.1 acres and is located at the South East corner of Civic Center Blvd. and Veterans Memorial Circle. The site is situated in a municipal center including Yuba City Hall to the north, Sutter County Jail to the south and Sutter County Public Health to the east.

This facility will consist of six multi-use courtrooms, along with support spaces, and totals approximately 73,326 square feet. The courthouse will be three stories in height plus a basement -for an in-custody holding area. The structure is a steel moment frame system on spread footings, complying with the 'progressive collapse' design guidelines.

Exterior finishes include thin set porcelain tile, cement plaster, glazed windows and glazed aluminum curtain wall. The exterior focal point of the New Yuba City Courthouse is its North West Courtyard and three-story entry and the open stair that connects the public activities on the first floor with the courtrooms and waiting areas on the second floor. The third floor is accessed by either elevator or stairwell.

The main entry, staff entry, public counters, court clerks, family court services, administrative services, , and jury assembly areas are located on the first floor. Security screening occurs within the main entry. The six courtrooms (including support spaces such as witness rooms, in-custody holding spaces, jury deliberation rooms), and Judges' chambers are located on the second and third floors. Associated with the courtrooms are in-custody holding spaces that will house defendants for court appearances. There is a secure defendant transfer area and a secure elevator adjacent each courtroom. The secure elevators connect to the secure basement holding area .

Complete electrical, mechanical, plumbing, AV, access control, CCTV and security systems shall be installed. Some systems, such as the IT infrastructure (telephone/data) and network systems may be installed by another contractor. AOC will generally be responsible for furniture fixtures and equipment (FFE) but will require contractor to coordinate power and data service that serves the FFE. Some of the FFE such as modular furniture will be delivered during the construction duration for contractor to install power and data cabling. Contractor will need to coordinate with Yuba City and other utilities to provide services to the project. The project is designed to achieve LEED Certified. ,

It is the intention of the AOC to begin construction in summer 2013, and continue for 20 months. The main telecom rooms will need to be operational before construction ends to allow IT equipment to be installed in the time necessary for building system testing and start-up.

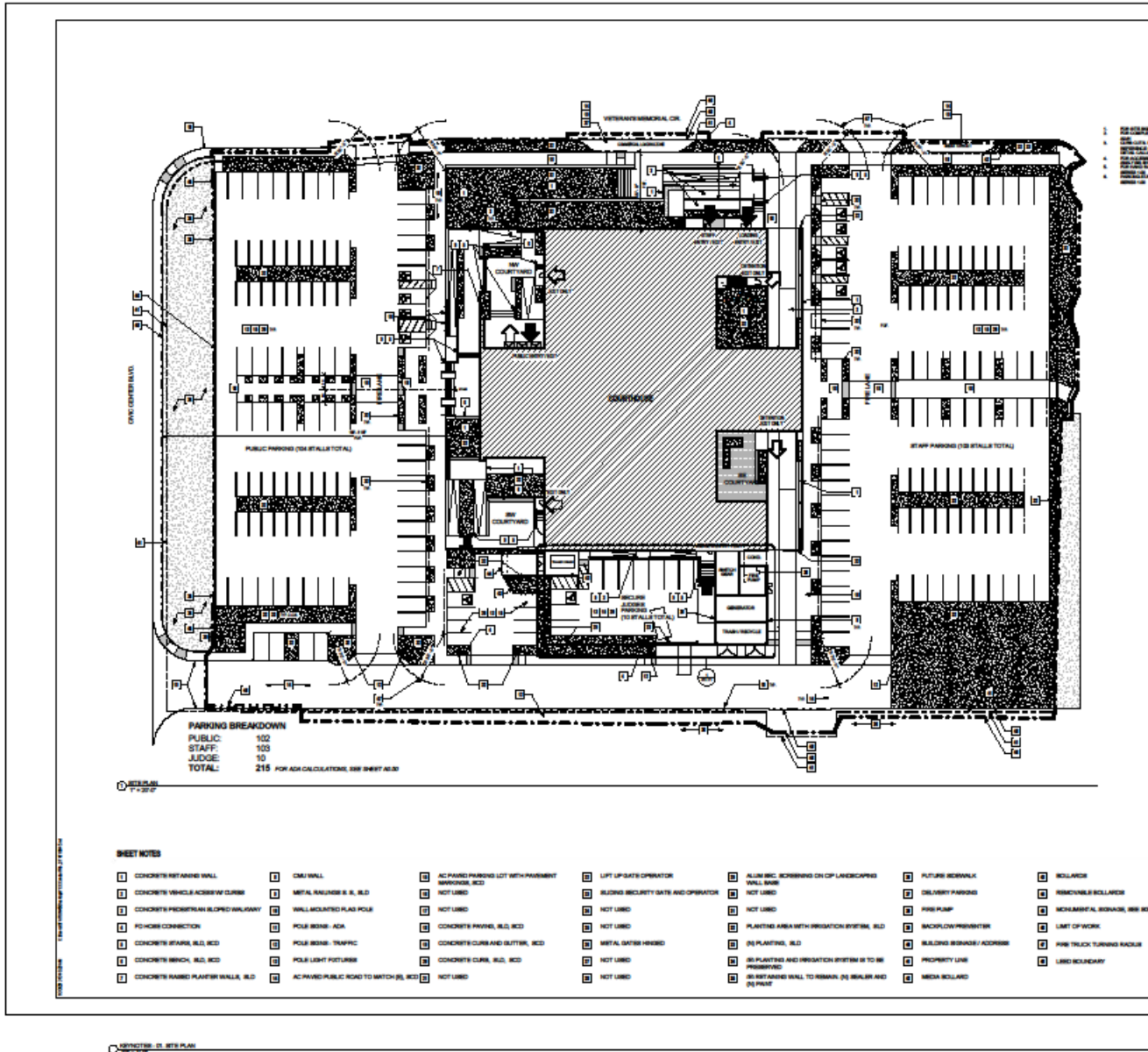
The AOC may enlist the services of a Construction Manager to assist during the construction of the Courthouse in schedule evaluation, document management, issue tracking, meeting facilitation, and other tasks.

The AOC's Estimate of the Value of Construction of this Project is approximately \$43,000,000.

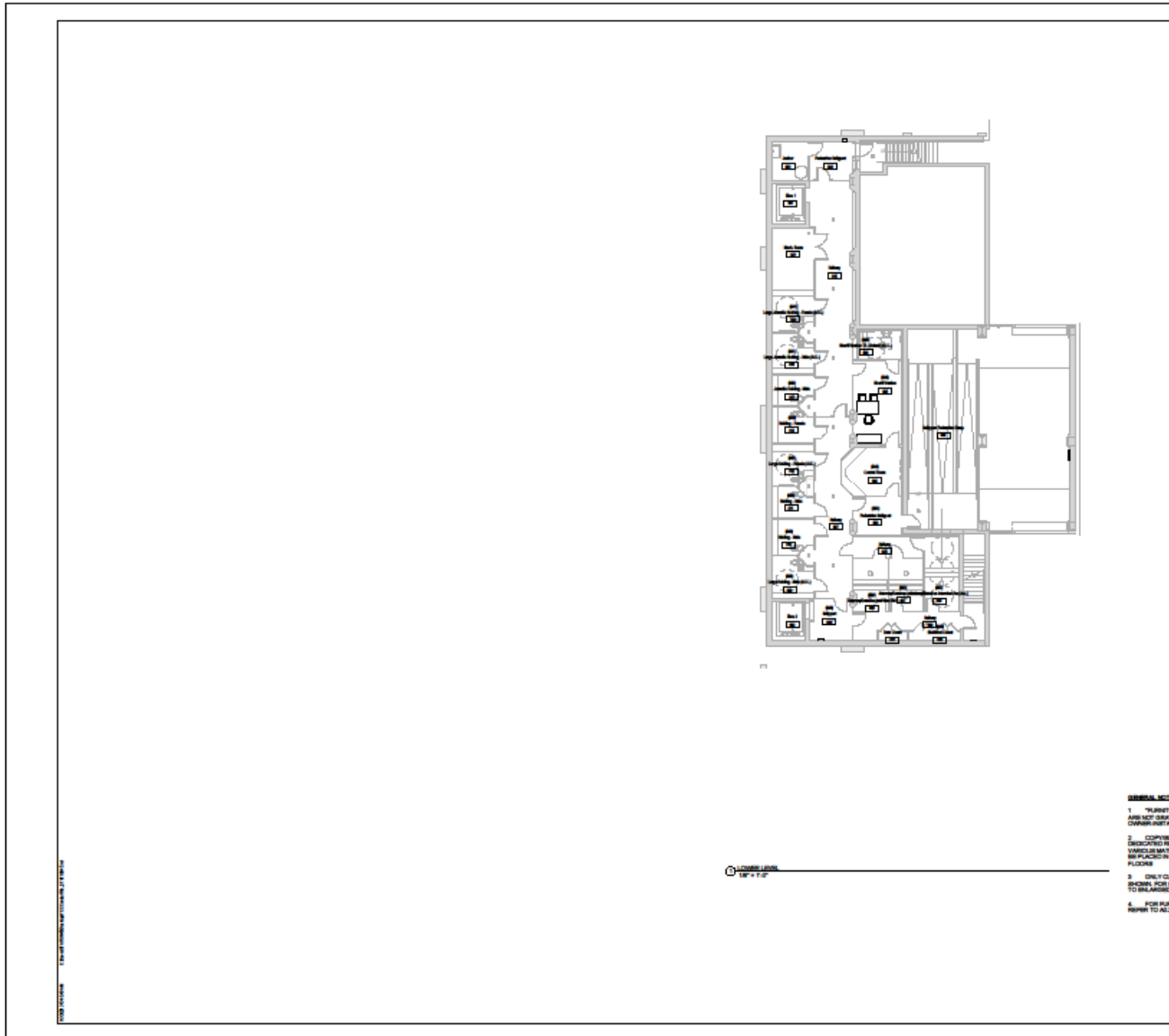
See below for plans, sections and elevations.



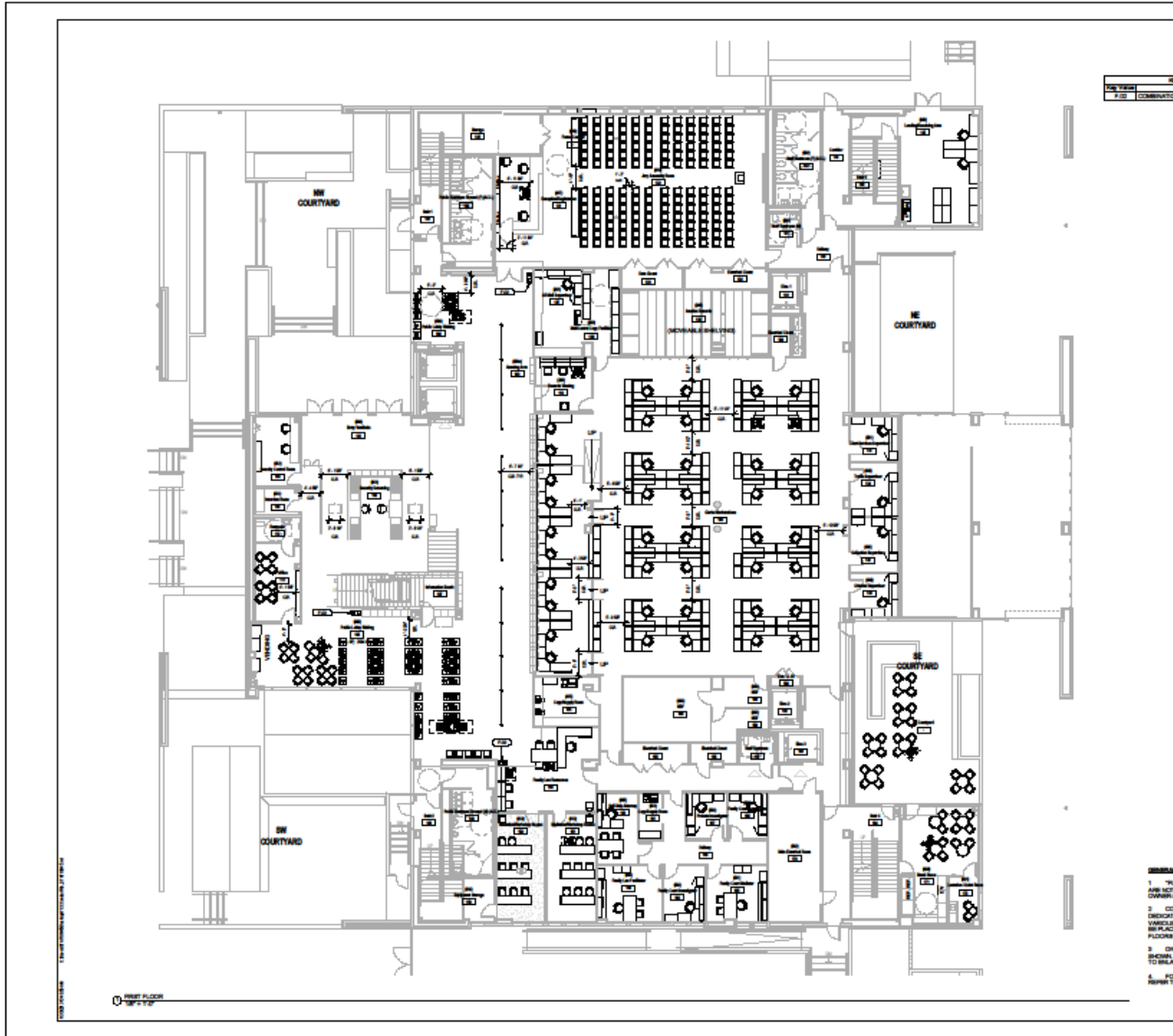
ATTACHMENT B  
Building Information



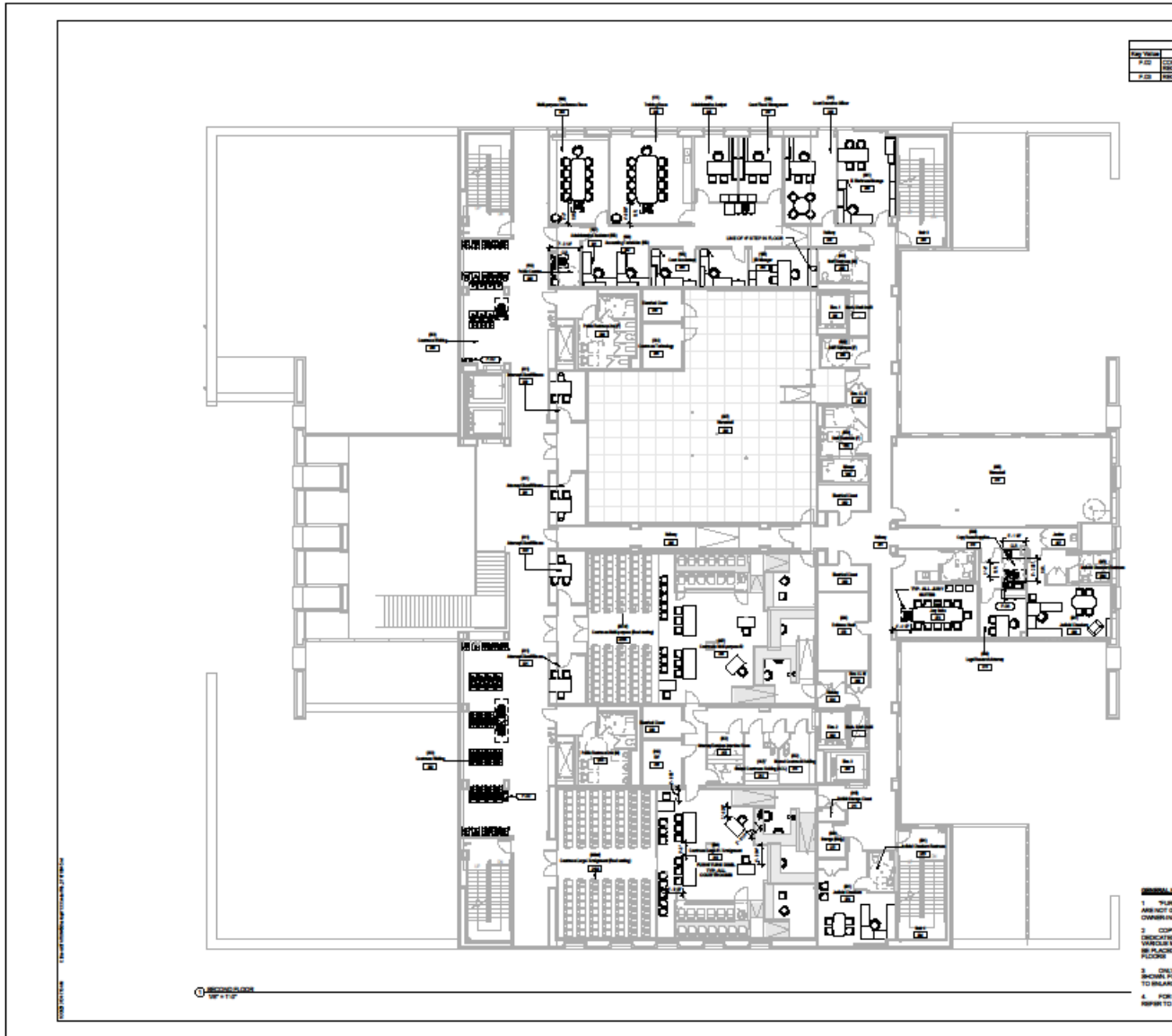
ATTACHMENT B  
Building Information



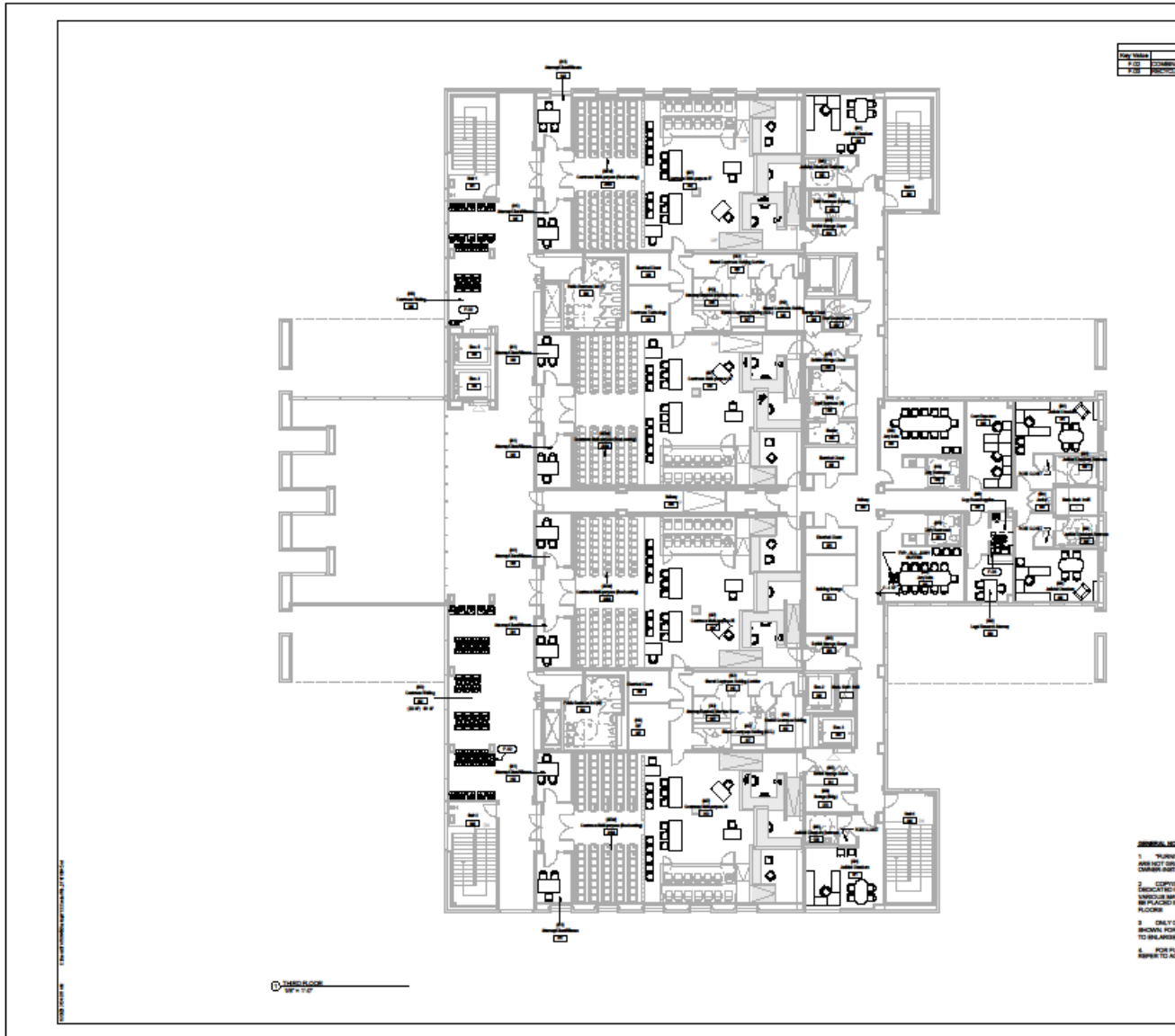
ATTACHMENT B  
 Building Information



ATTACHMENT B  
Building Information

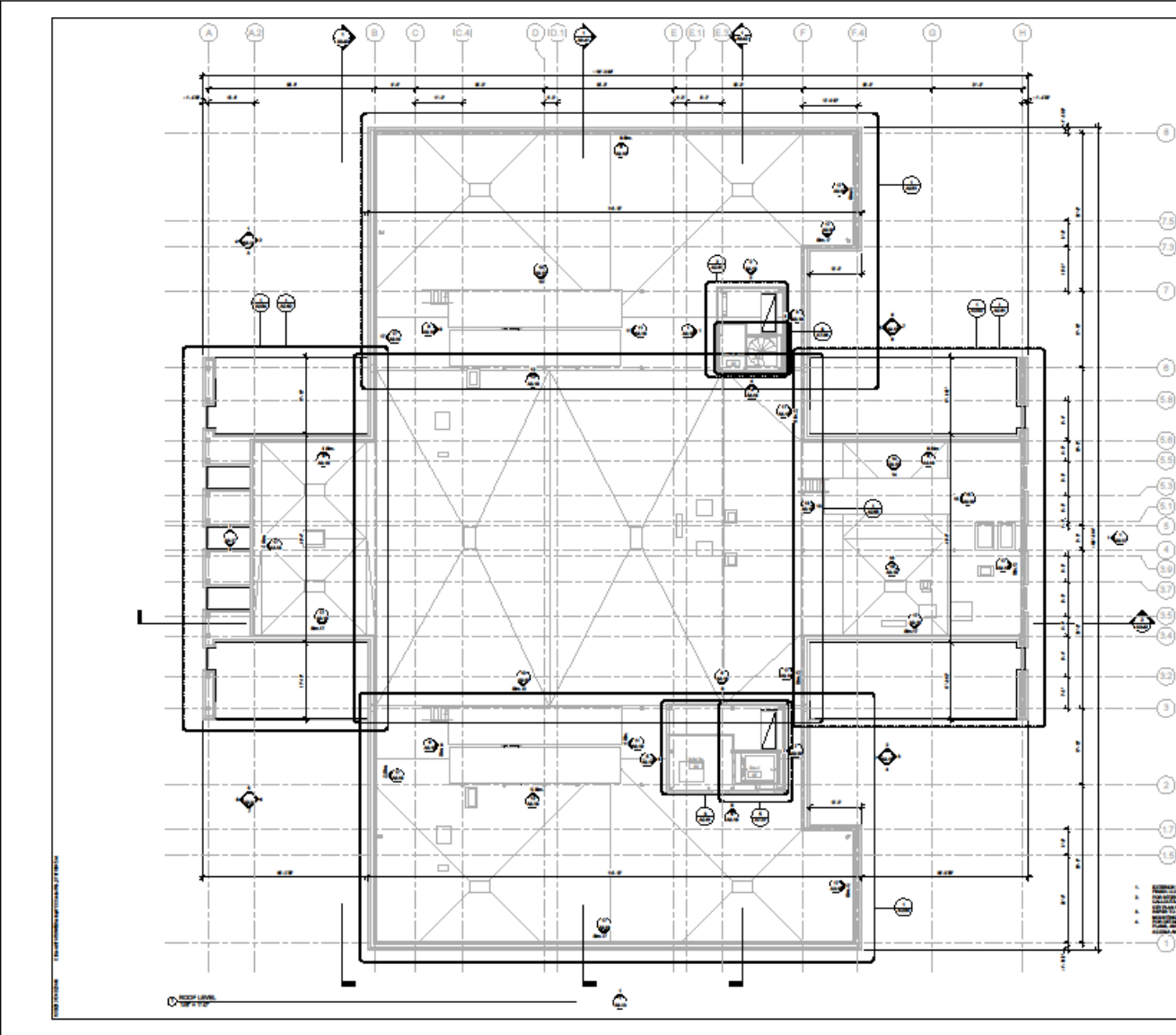


ATTACHMENT B  
Building Information

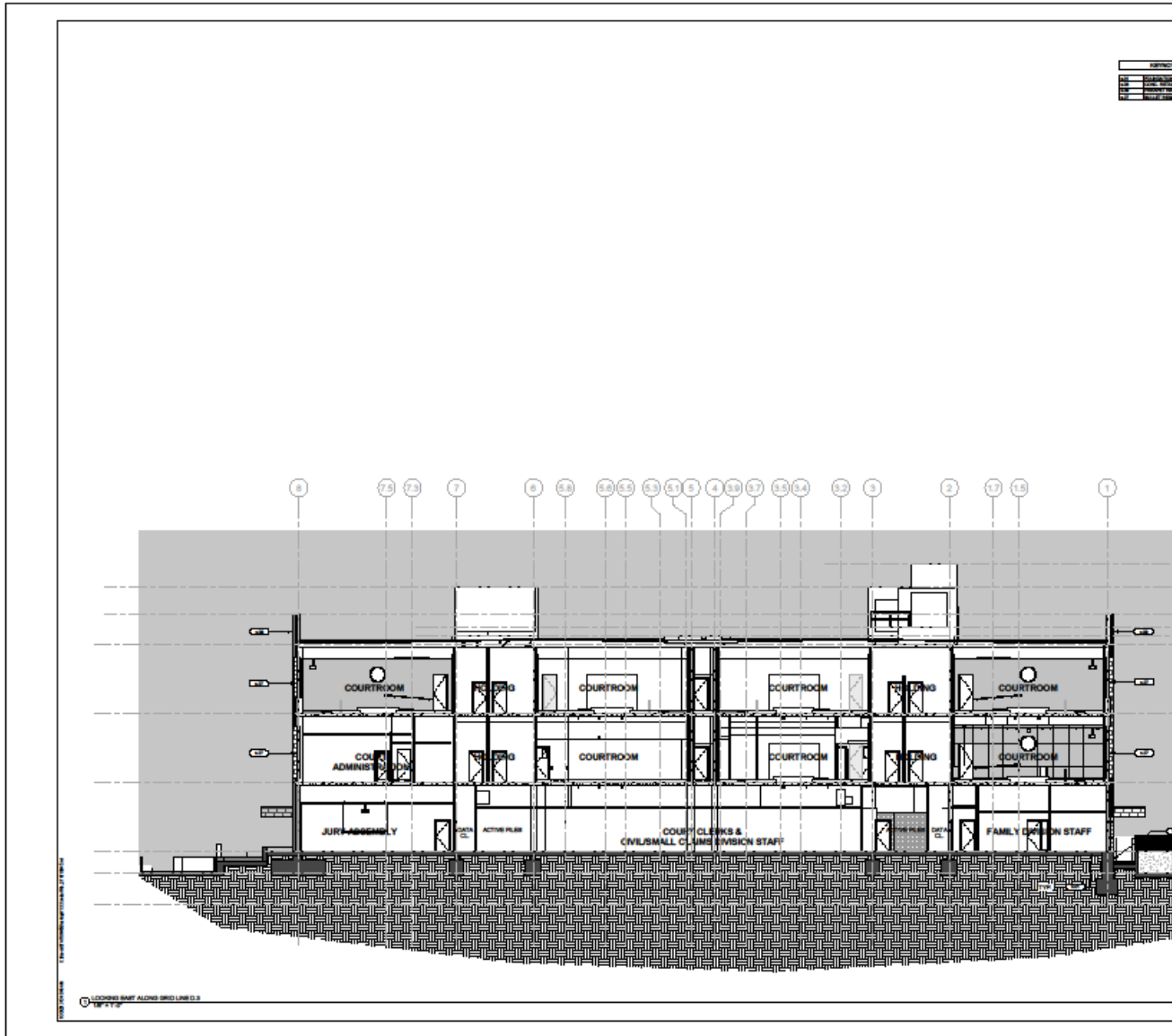




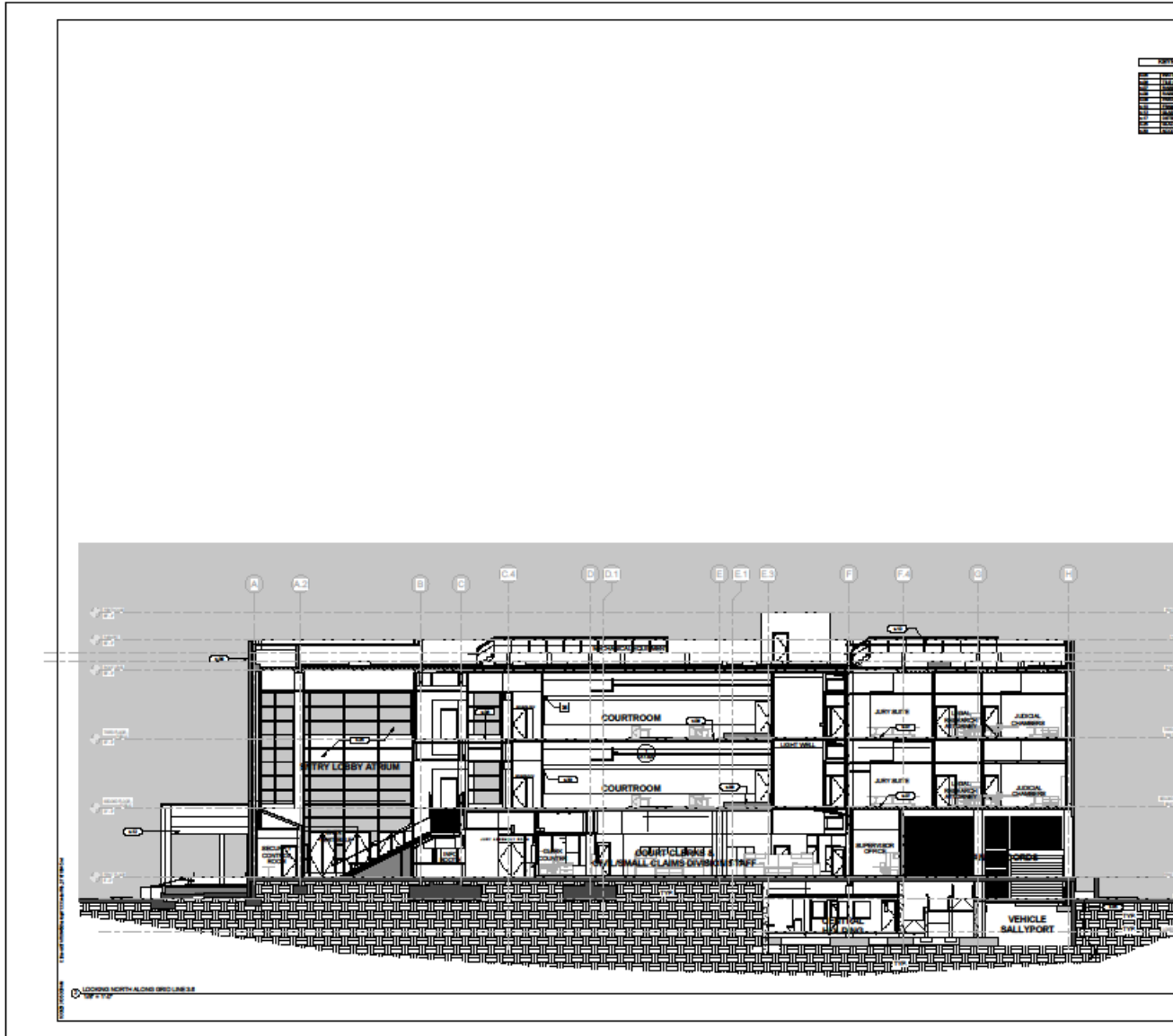
ATTACHMENT B  
Building Information



ATTACHMENT B  
Building Information



ATTACHMENT B  
Building Information





ATTACHMENT B  
Building Information





