

## **Summary of Inventory Resources**

The following inventory summary itemizes the in-scope assets to be considered for support. The JCC has several Microsoft Azure and Amazon Web Services (AWS) tenants, as well as a legacy on-premises data center at the JCC office in San Francisco. In all cases, there are a variety of resources requiring operational support including applications, storage solutions, databases, software/middleware, and various other systems.

Several diagrams including the JCC internal Wide Area Network (WAN), San Francisco Local Area Network (LAN), and JCC branch wide network overview are included. In the summary of resources for the branch wide network there are components for the two Equinix facilities. Equinix is the infrastructure that provides interconnection solutions for secure access to applications hosted in our cloud-based platforms.

### JCC Operationally Supported Resources Inventory - Data Center

Vendor	Version	Quantity	Notes
Rubrik	Cloud Hosted	1	Manage back ups of our CALJC Microsoft 365 (email, SharePoint, OneDrive, Teams)
NetApp / NAS	Netbackup 8.2	2	
NetApp / NAS	Netbackup 10.0.0.1	2	
Windows / File Svr	File Server	2	
SUN PHYS Host	RHEL	2	
VMWare Host	Windows	25	
VMWare VM	RHEL 5	2	
VMWare VM	RHEL 6	13	
VMWare VM	RHEL 7	10	
VMWare VM	RHEL 8	6	
VMWare VM	UBUNTU 18	0	
VMWare VM	Windows	23	
VMWare VM	RHEL 5	0	
VMWare VM	RHEL 6	48	
VMWare VM	RHEL 7	22	
VMWare VM	RHEL 8	43	
VMWare VM	UBUNTU 18	2	
VMWare VM	Windows	117	
HPE DL385P-G8	WINDOWS 2012	4	
HPE DL360-G7	WINDOWS 2012	4	
HYPER-V	WINDOWS 2012	2	
HPE DL365-G1	WINDOWS 2012	1	

### JCC Operationally Supported Resources Inventory - Network

Vendor	Version	Quantity	Notes
AT&T ASE Circuit	N/A	13	
AT&T Opt-e-MAN	N/A	1	
AT&T MIS	N/A	2	
AT&T Opt-e-MAN	N/A	2	
AT&T MIS	N/A	1	
Cisco 3750 Stackable Switches	12.2(25)SEE2	2	
Cisco 3750 Stackable Switches	12.2(35)SE5	4	
Cisco 3945E Integrated Services	15.4(3)M2	1	
Cisco 4431 Integrated Services R	15.4(3)S2	2	
Cisco 4431 Integrated Services R	16.6.4	1	
Cisco 5508 Wireless LAN Control	8.2.151.0	1	
Cisco ASR 1001-X Router	Router	2	
Cisco CallManager	N/A	1	
Cisco Catalyst 3560X-24T-L,S Swi	15.0(2)SE6	1	
Cisco Catalyst 4507R plus E Switc	03.02.04.SG	11	
Cisco Catalyst 4948 Switch	12.2(31)SGA4	1	
Cisco Catalyst 6500 Virtual Switc	15.2(1)SY5	1	
Cisco Catalyst 6509 Switch	15.2(1)SY4	1	
Cisco Catalyst 9300 Switch	16.9.2	4	
Cisco Catalyst 9300 Switch	16.9.3	6	
Cisco Catalyst 9800-40 Wireless	17.3.4c	1	
Cisco Catalyst38xx stack-able eth	03.06.08E	3	
Cisco Catalyst38xx stack-able eth	16.6.1	6	
Cisco ME 3400EG-12CS-M Switch	12.2(50)SE4	1	
Cisco Nexus 5672UP Switch	7.3(3)N1(1)	3	

## Summary of Azure Resources

Type	Count
API Connection	24
API Management service	2
App Service	188
App Service (Slot)	3
App Service plan	70
Application gateway	9
Application group	7
Application Insights	66
Application security group	65
Automation Account	19
Availability set	111
Availability test	2
Azure AD Domain Services	2
Azure Cache for Redis	18
Azure Cosmos DB account	8
Azure Cosmos DB for MongoDB account	14
Azure Data Box	7
Azure Database for MariaDB server	20
Azure Database for MySQL single server	1
Azure DevOps organization	1
Azure Load Testing	3
Azure Workbook	17
B2C Tenant	1
Backup vault	1
Bastion	34
Cloud service (classic)	1
Connection	7
Container registry	7
Container registry replication	2
Data collection rule	12
Disk	826
Disk Access	1
DNS zone	1
Event Grid System Topic	4
Event Hubs Namespace	2
ExpressRoute circuit	3
Firewall	3
Firewall Policy	1
Front Door and CDN profiles	9
Front Door WAF policy	6
Function App	24
Guest Usage	2
Host pool	6
Image	1

Key vault	27
Language	1
Language understanding	9
Load balancer	4
Local network gateway	6
Log Analytics query pack	10
Log Analytics workspace	68
Logic app	85
Managed Identity	8
Network Interface	664
Network security group	162
Network Watcher	39
NSG Flow log	25
Private DNS zone	57
Private endpoint	234
Public IP address	66
QnA maker	2
Recovery Services vault	50
Resource Graph query	4
Restore Point Collection	232
Route table	57
Runbook	95
SaaS	1
Scaling plan	1
Search service	2
Service Bus Namespace	7
Services Hub Connector	1
Shared dashboard	9
SignalR	10
Snapshot	163
Solution	132
Speech service	1
SQL database	5
SQL server	5
SQL virtual machine	1
SSH key	5
Static Web App	18
Storage account	318
Template spec	11
Traffic Manager profile	1
Translator	6
Virtual machine	403
Virtual network	51
Virtual network gateway	5
Web App Bot	1
Workspace	6
Grand Total	4679

## Azure Virtual Machine's

Row Labels	Count of TYPE
<b>Virtual machine</b>	<b>403</b>
<b>Linux</b>	<b>152</b>
Standard_B2s	3
Standard_D1	1
Standard_D16s_v3	2
Standard_D16s_v4	6
Standard_D2_v3	1
Standard_D2s_v3	29
Standard_D2s_v4	5
Standard_D2s_v5	1
Standard_D4ds_v5	3
Standard_D4s_v3	4
Standard_D4s_v4	5
Standard_D8s_v3	7
Standard_D8s_v4	2
Standard_DS1_v2	22
Standard_DS12_v2	2
Standard_DS2_v2	7
Standard_E2ds_v4	17
Standard_E2s_v3	1
Standard_E4-2ds_v5	7
Standard_E4s_v3	15
Standard_E8-4s_v3	1
Standard_E8s_v3	3
Standard_F16s_v2	2
Standard_M32ls	1
Standard_M32ms	3
Standard_M64ls	1
Standard_M64ms	1
<b>Windows</b>	<b>251</b>
Standard_B2ms	3
Standard_B4ms	2
Standard_D2ads_v5	1
Standard_D2as_v4	13
Standard_D2ds_v4	2
Standard_D2s_v3	94
Standard_D2s_v4	10
Standard_D4ds_v4	2
Standard_D4s_v3	1
Standard_D4s_v4	2
Standard_D8s_v3	1
Standard_DS1_v2	4
Standard_E2ds_v4	21

Standard_E2s_v3	68
Standard_E2s_v4	17
Standard_E2s_v5	5
Standard_E4-2as_v5	2
Standard_E4-2ds_v4	1
Standard_E4-2ds_v5	1
Standard_E4s_v4	1
<b>Grand Total</b>	<b>403</b>

## Summary of AWS Resources

Type	Vendor	Version	Quantity
AWS	VM	RHEL 8	6
AWS	VM	RHEL 6	1
AWS	VM	UBUNTU 14	2
AWS	VPN	Dir Conn	2
AWS	Axway ST VM	RHEL	3
AWS	Axway Edge VM	RHEL	3
AWS	Pilot Light VM	RHEL	2
AWS	Bastion VM	Windows	3
AWS	Router	N/A	3
AWS	VPN Gateway	N/A	3

<b>Oracle Databases</b>	
<b>Row Labels</b>	<b>Count of No of DB Instances</b>
<b>AWS</b>	<b>6</b>
19.3	5
12.2.0.1	1
<b>Azure</b>	<b>14</b>
19.3	14
<b>On-Prem</b>	<b>56</b>
19.3	26
11.2.0.4	2
12.1.0.1	2
12.1.0.2	18
12.2.0.1	7
18c	1
<b>Grand Total</b>	<b>76</b>

<b>Azure Database Accounts</b>	
<b>Row Labels</b>	<b>Count of STATUS</b>
<b>Azure Cosmos DB account</b>	<b>8</b>
West US	7
West US 2	1
<b>Azure Cosmos DB for MongoDB account</b>	<b>13</b>
West US	13
<b>Online</b>	<b>1</b>
West US	1
<b>Grand Total</b>	<b>22</b>

<b>Azure MariaDB Database</b>	
<b>Row Labels</b>	<b>Count of RESOURCE TYPE</b>
Azure Database for MariaDB server	20
<b>Grand Total</b>	<b>20</b>



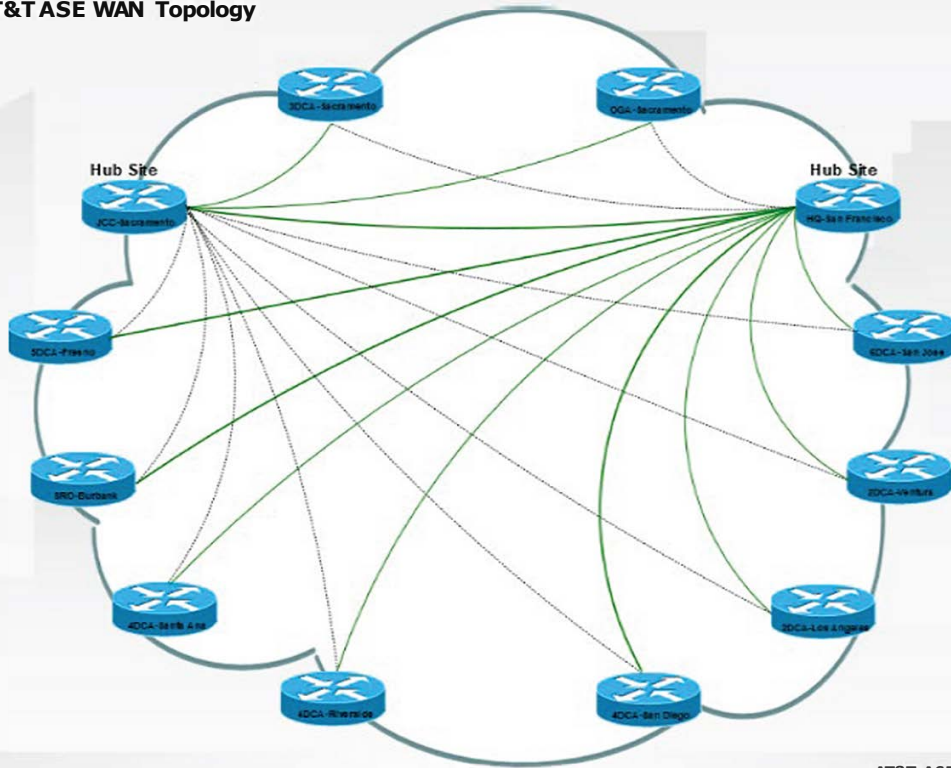
MiddleWare Software	Version	Total
.NET Framework	4.5.1	1
ActiveMatrix Businessworks	5.12	1
ActiveMatrix Businessworks	5.13.0	1
ActiveMatrix Businessworks	5.14	1
Ancile RWD App/Web	5.4	1
Ancile RWD Search Index	1	1
Apache	2.4.41	1
Apache	2.4.52	4
Business Objects XI	4.1_SP2	1
Business Objects XI	4.1_SP7_Patch 5	2
Business Objects XI	4.2_SP7_Patch 1	1
ColdFusion	11.0_0007	1
Datamaxx	3.2.5.0	1
FileNet	P8	1
Helicon isapi/rewrite/3		1
Helicon isapi/rewrite/3 upgrade license	3	1
Internet Information Services	7.0.6000.16386	1
Internet Information Services	7.5	1
isapi/rewrite/3	e	1
isapi/rewrite/3 new license		1
Java Development Kit	1.7	1
Java Development Kit	1.7.0_45	1
Java Development Kit	1.7.0_67	1
Java Development Kit	1.7.0_80	1
Java Development Kit	1.8.0_152	1
Java Development Kit	1.8.0_162	1
Java Runtime Environment	1.6.0_38	1
Java Runtime Environment	1.7.0_171	1
OMNIXX Enterprise Edition	5.3.4.7	1
OpenSSL	1.0.1_e	3
OpenSSL	1.0.1_u	1
OpenSSL	1.0.2_k	1
OpenSSL	1.0.2_n	1
Oracle Client	11.2.0.1.0	1
Oracle Client	11.2.0.3.0	1
Oracle Client	12.1.0.2	1
Oracle Database	11.2.0.4.0	1
Oracle Database	12.1.0.2	1
Oracle Directory Server Enterprise Edition	11.1.1	1
SiteMinder Administrative UI	12.52.108.2504	2
SiteMinder Policy Server	12.52.108.2504	1
SiteMinder Policy Server	12.80.300.2138	1
SiteMinder Web Agent	12.52.108.2504	7
SiteMinder Web Logic Agent	12	1

Sun Java System Directory Server Enterpr		1
Syslog-ng	5.0.10	1
Tomcat	7.0.55	1
Tomcat	7.0.68	1
Tomcat	7.0.85	1
Tomcat	8.5.24	1
Tomcat	8.5.32	1
Tririga	10_P3.6.0.6	1
Web Output Pak	5.7.1.16179	1
WebLogic	12.1.2.0.0	1
WebLogic	12.1.3.0.0	2
WebLogic	12.2.1.3.0	1
WebSpellChecker	1.5.0.6	1
<b>Total</b>		<b>71</b>

## Branchwide Network

Row Labels	Sum of Quantity
<b>Equinix Los Angeles</b>	<b>14</b>
Concentrator	1
Firepower Threat Defense	2
Firewall Management Center	1
Router	4
Switch	4
VPN Xpress Rt	2
<b>Equinix San Jose</b>	<b>14</b>
Concentrator	1
Firepower Threat Defense	2
Firewall Management Center	1
Router	4
Switch	4
VPN	2
<b>MPLS WAN</b>	<b>72</b>
Circuits	36
Routers	36
<b>VPN</b>	<b>47</b>
Site-to-Site	47
<b>Grand Total</b>	<b>147</b>

# JCC AT&TASE WAN Topology

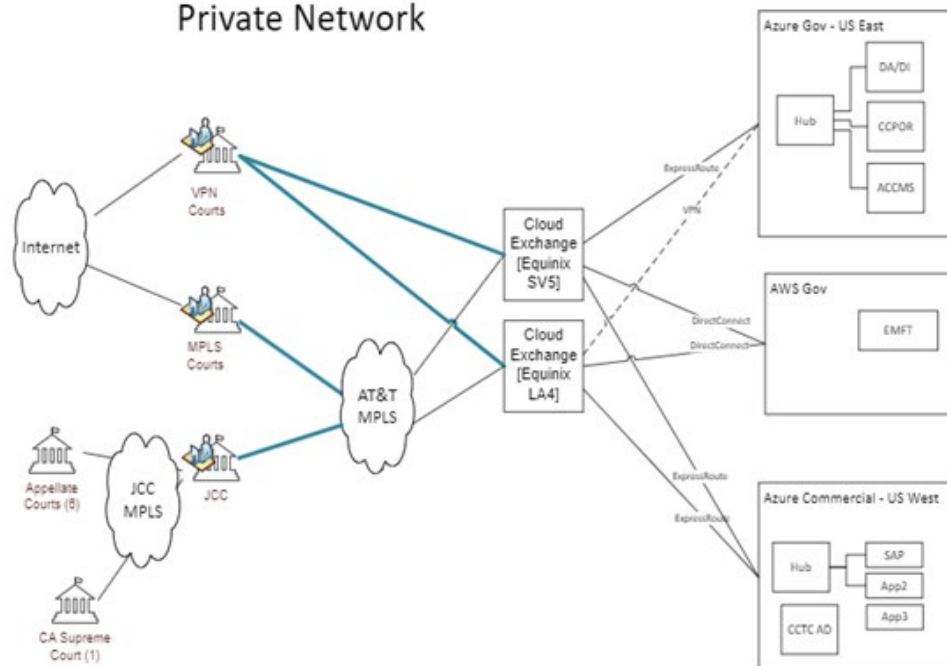


AT&T ASE Network





# Judicial Branch Private Network



## Overview:

- Courts are our customers
- JCC hosts applications in the cloud for the Courts
- 58 independently owned and operated Courts
- Courts connect via:
  - o MPLS
  - o Site-site IPSEC VPN
  - o Client VPN
- Connectivity trend is moving away from MPLS in favor of VPN
- Some Courts have multiple sites
- Some Courts have their own datacenters
- Every Court has it's own Internet access
- JCC has no 'authority' over Courts
- Equinix is our 'cloud exchange' solution
- Most courts have Fortigate firewalls managed by SoD
- Most courts have JCC/MSP managed Cisco WAN routers
- Cloud exchange has Cisco routers