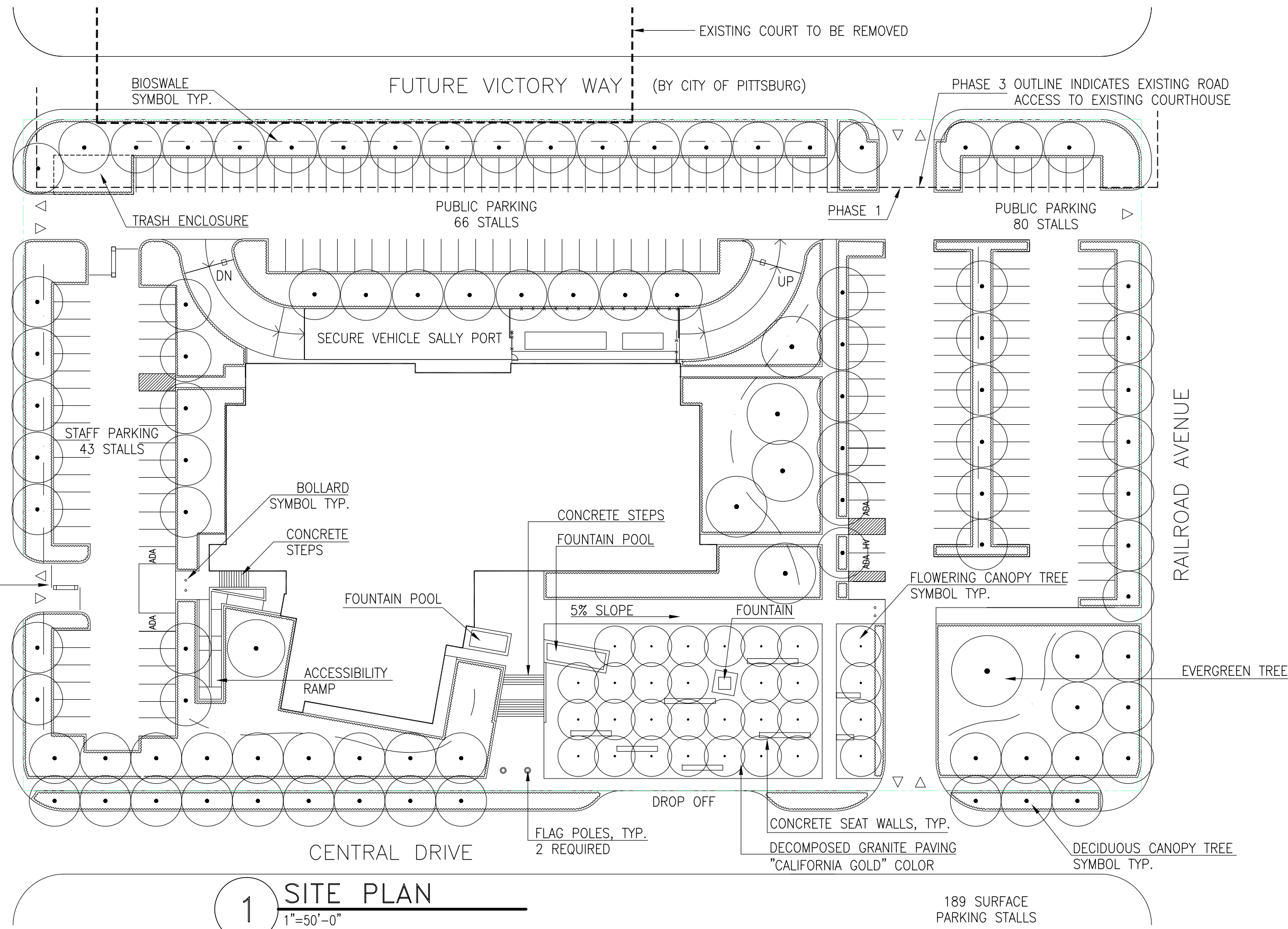




EAST CONTRA COSTA COURTHOUSE  
100% SCHEMATIC DESIGN

SITE PLAN  
JUNE 14, 2007





1 SITE PLAN  
1"=50'-0"

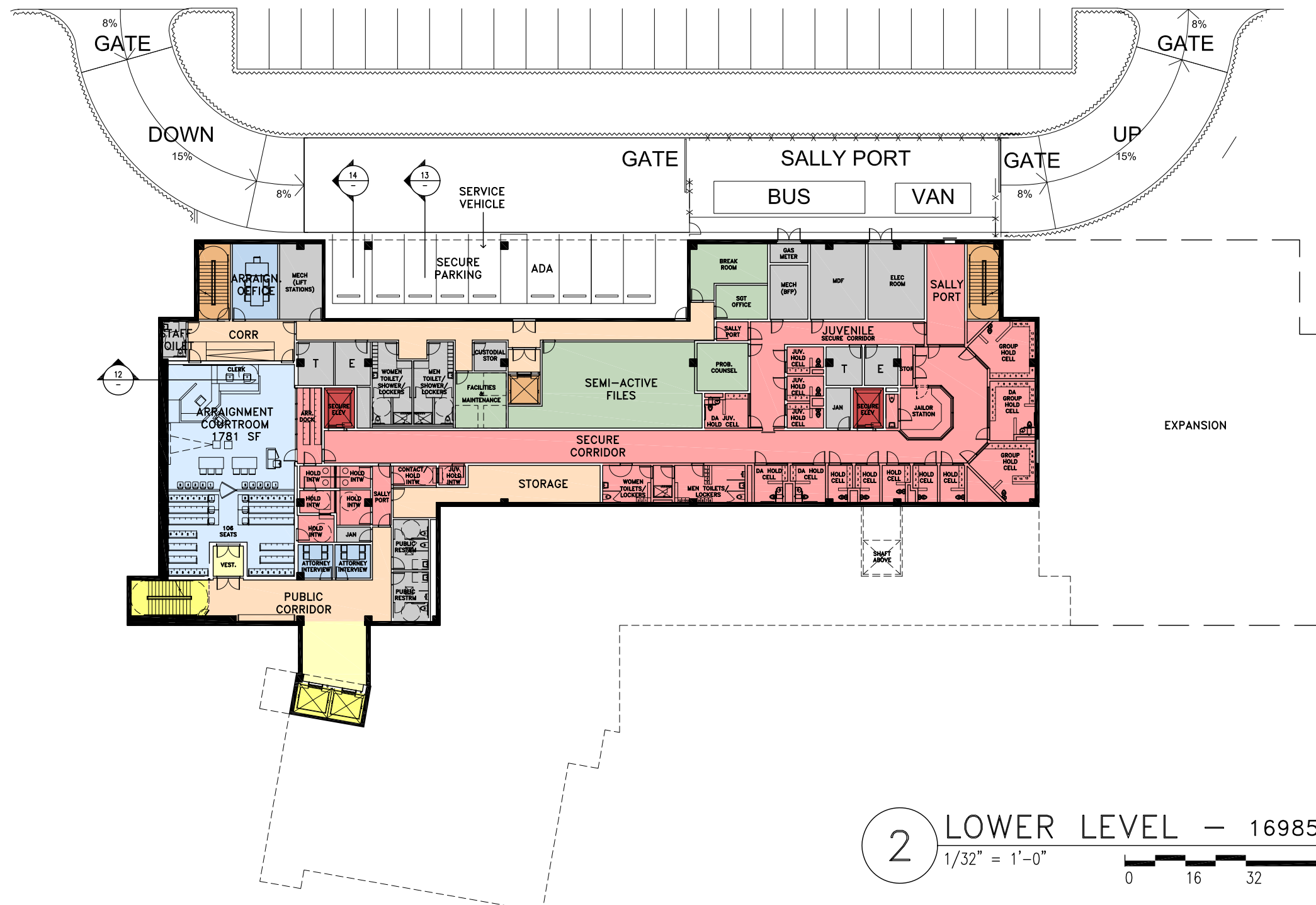
189 SURFACE PARKING STALLS

EAST CONTRA COSTA COURTHOUSE  
PROGRESS

# ANNOTATED SITE PLAN

JUNE 22, 2007





2 LOWER LEVEL — 16985 SF  
 1/32" = 1'-0"  
 0 16 32 64 FT



EAST CONTRA COSTA COURTHOUSE  
 100% SCHEMATIC DESIGN

# LEVEL ONE FLOOR PLAN

JUNE 14, 2007



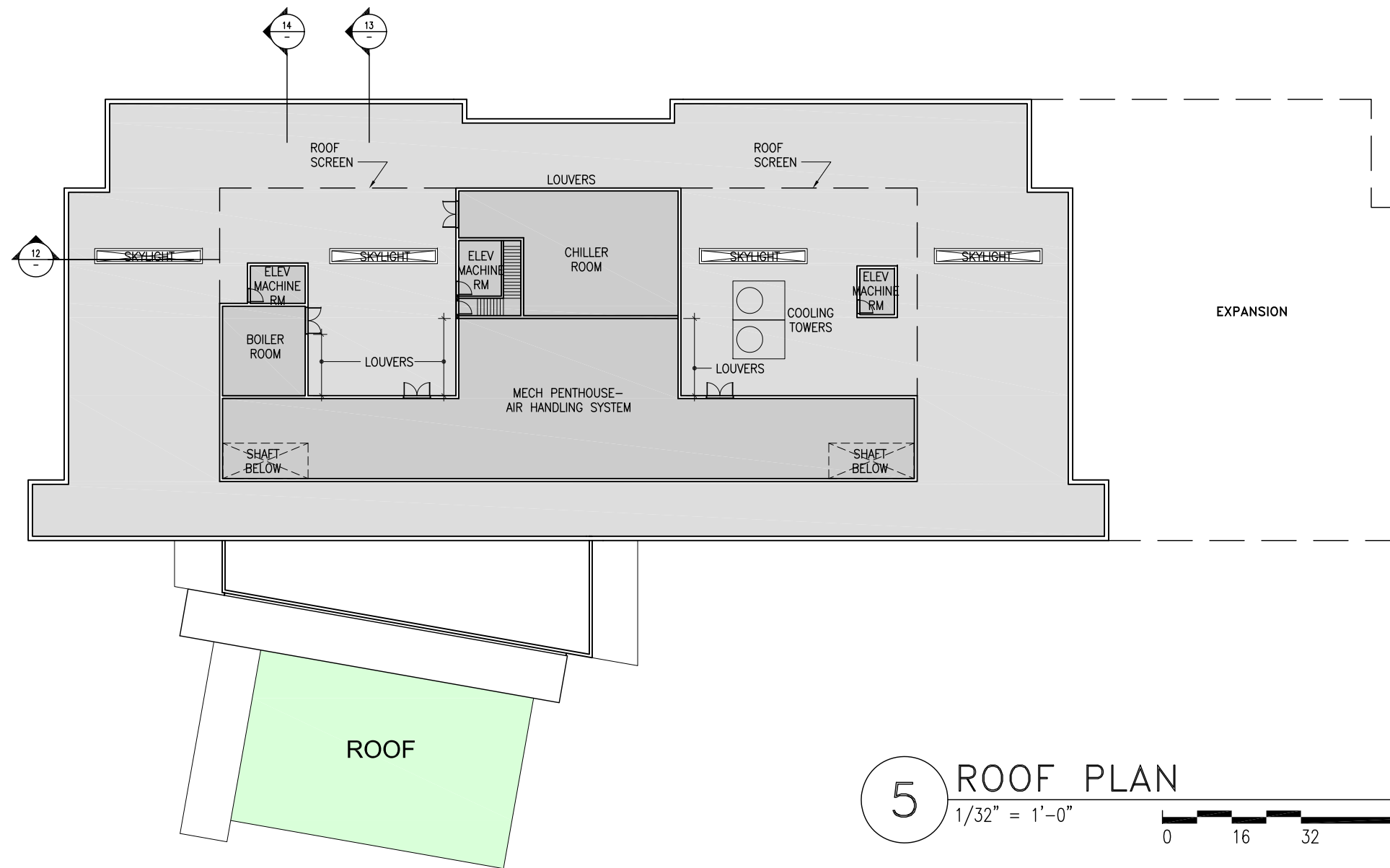


EAST CONTRA COSTA COURTHOUSE  
100% SCHEMATIC DESIGN

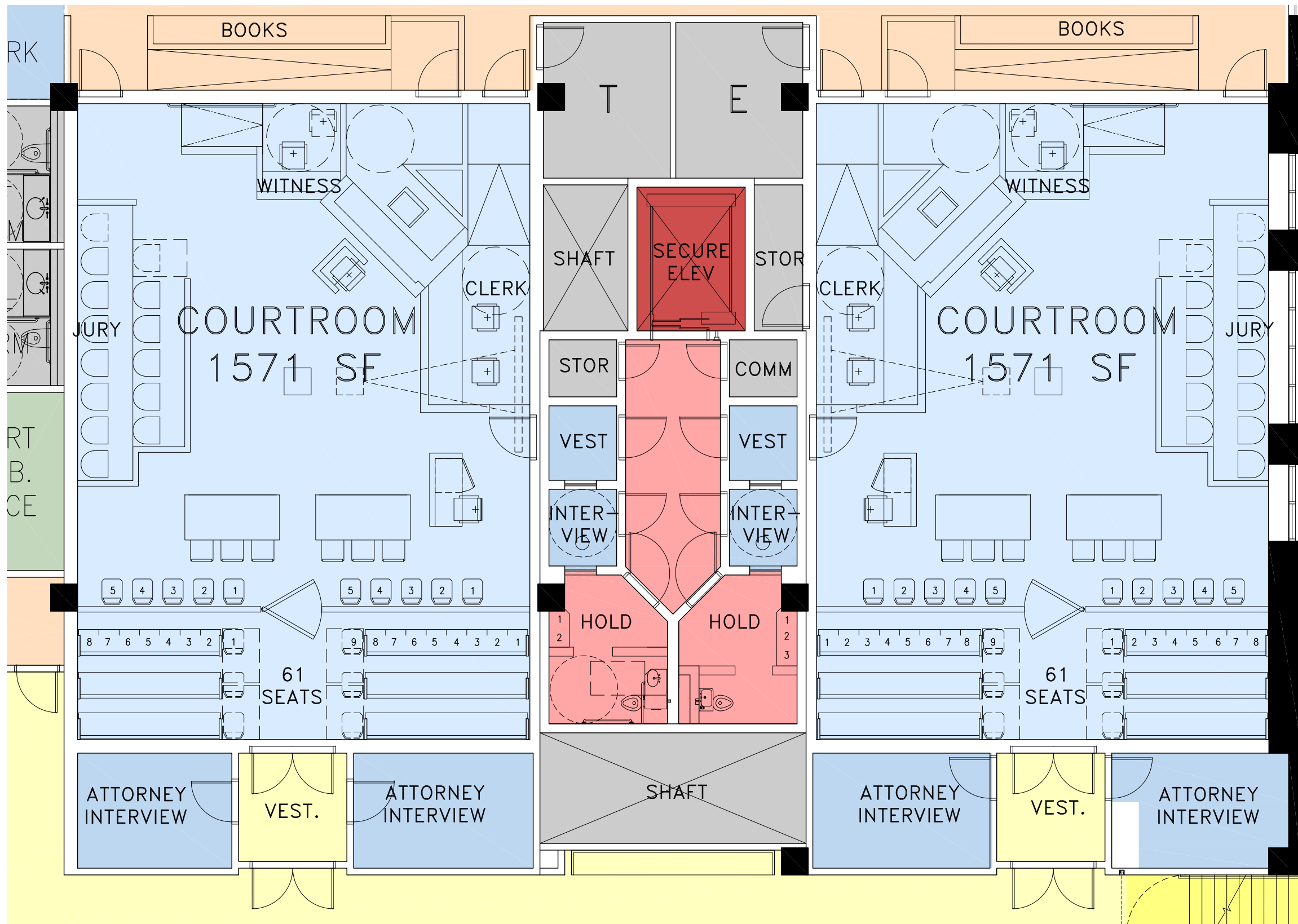
# LEVEL TWO FLOOR PLAN

JUNE 14, 2007

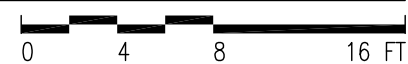


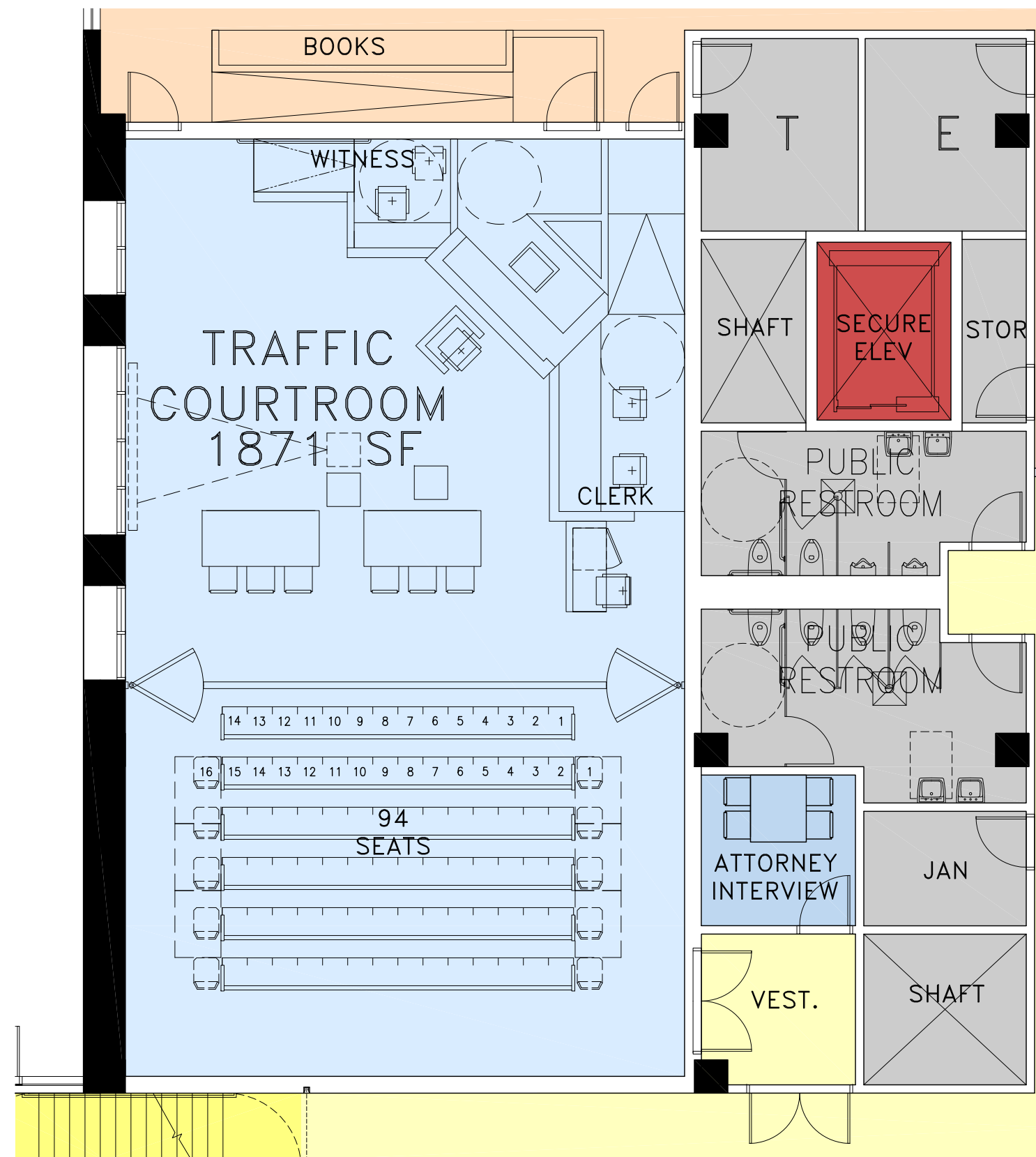


5 ROOF PLAN  
 1/32" = 1'-0"  
 0 16 32 64 FT



6 ENLARGED PLAN – MP COURTROOMS  
 1/8" = 1'-0"

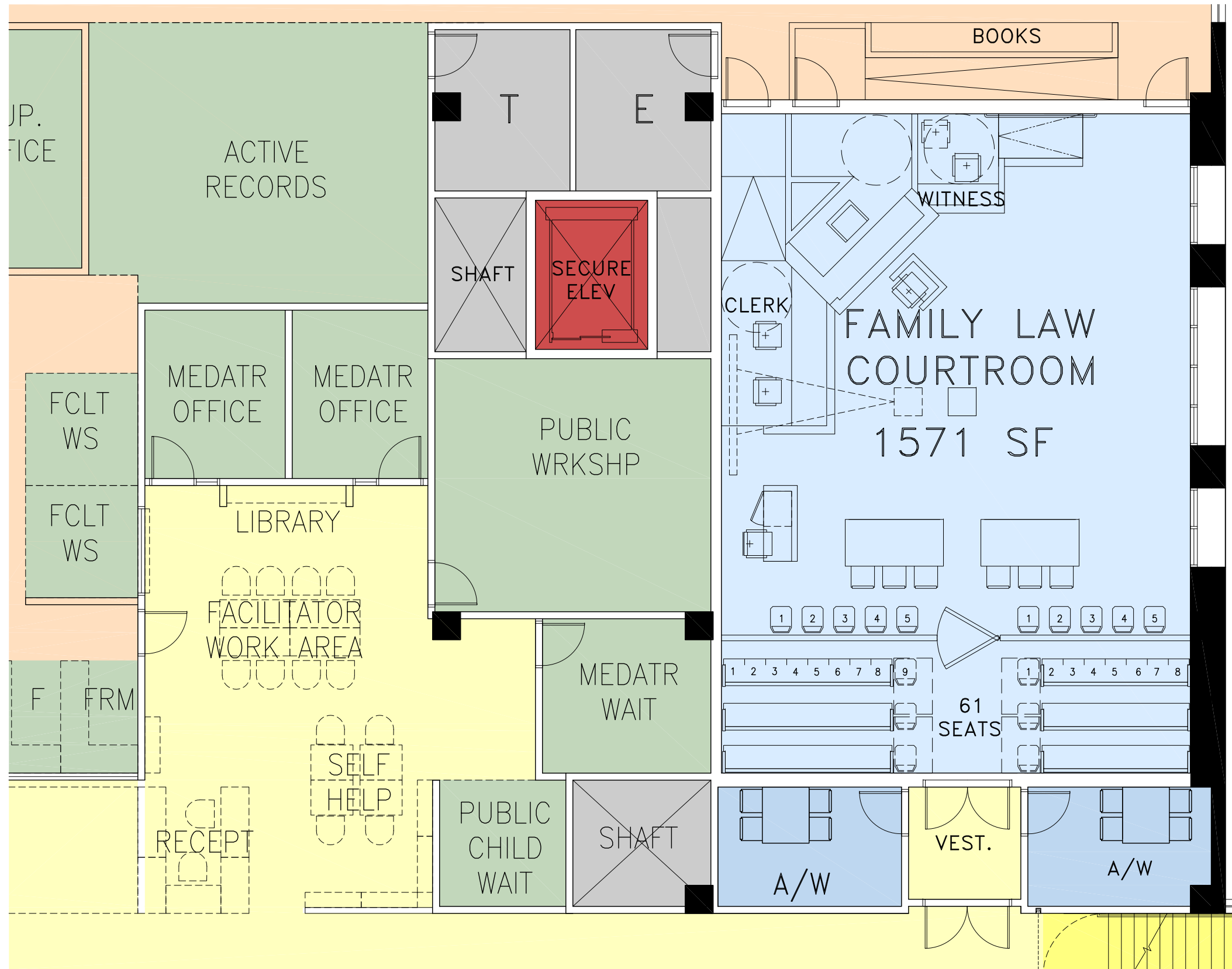




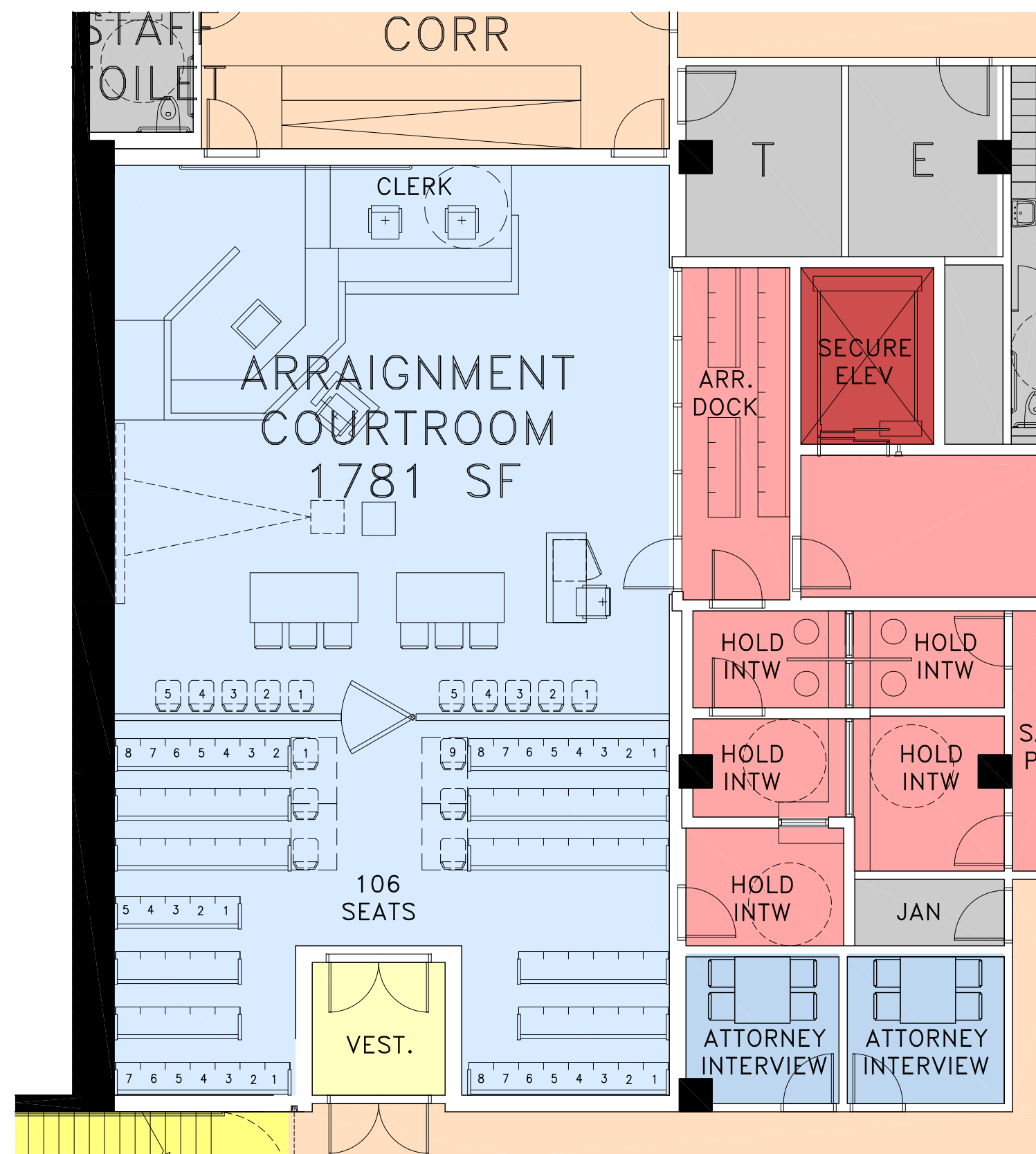
7 ENLARGED PLAN – TRAFFIC COURTROOM  
 1/8" = 1'-0"



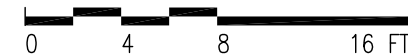


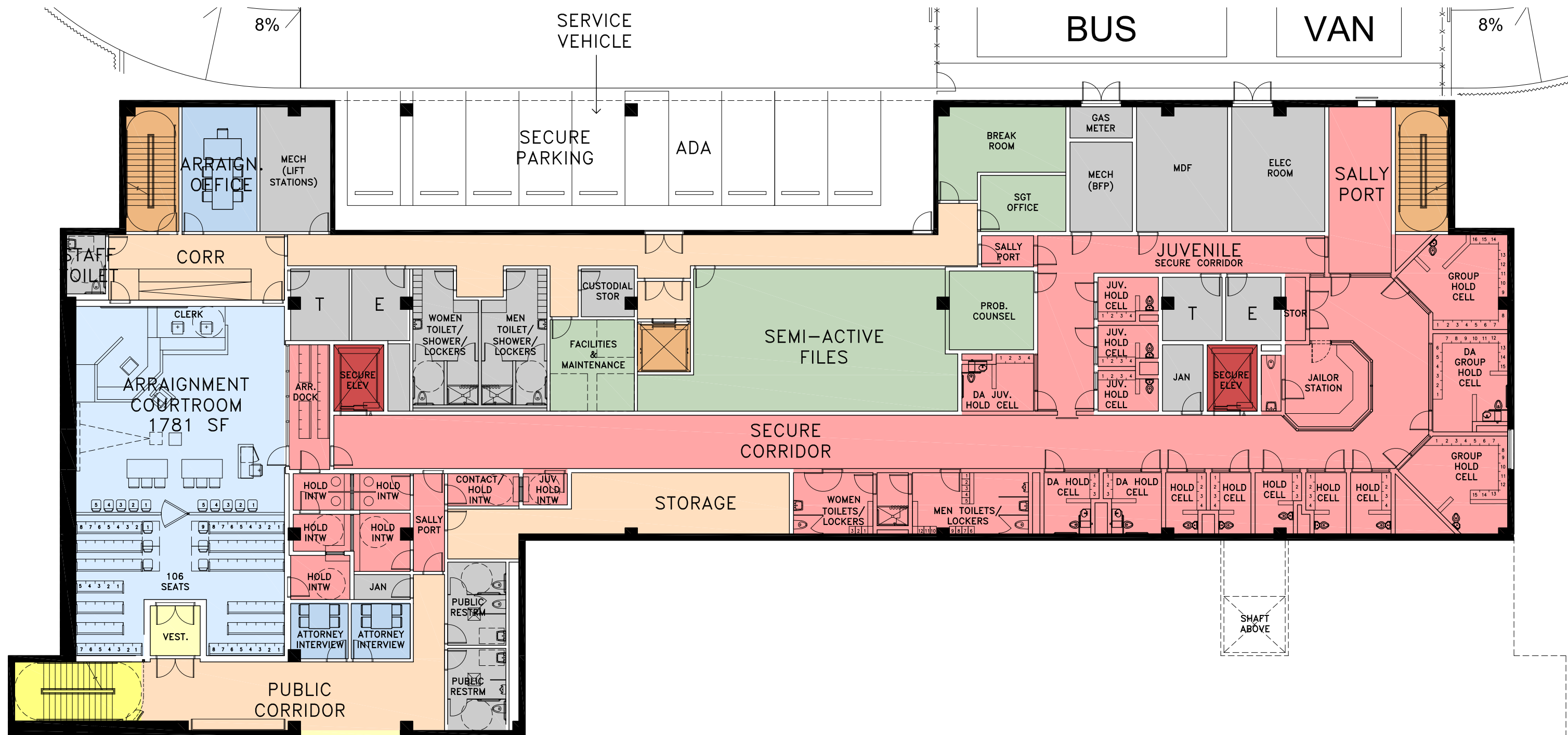


8 ENLARGED PLAN – FAMILY LAW  
 1/8" = 1'-0"  
 0 4 8 16 FT



9 ENLARGED PLAN – ARRAIGNMENT COURTROOM  
 1/8" = 1'-0"



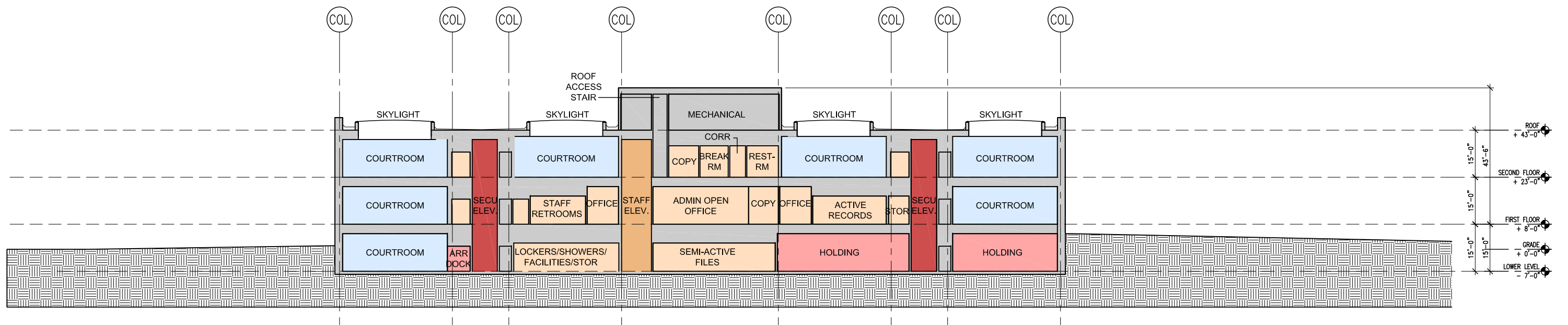


11 ENLARGED PLAN - LOWER LEVEL  
 1/16" = 1'-0"  
 0 8 16 32 FT

EAST CONTRA COSTA COURTHOUSE  
 100% SCHEMATIC DESIGN

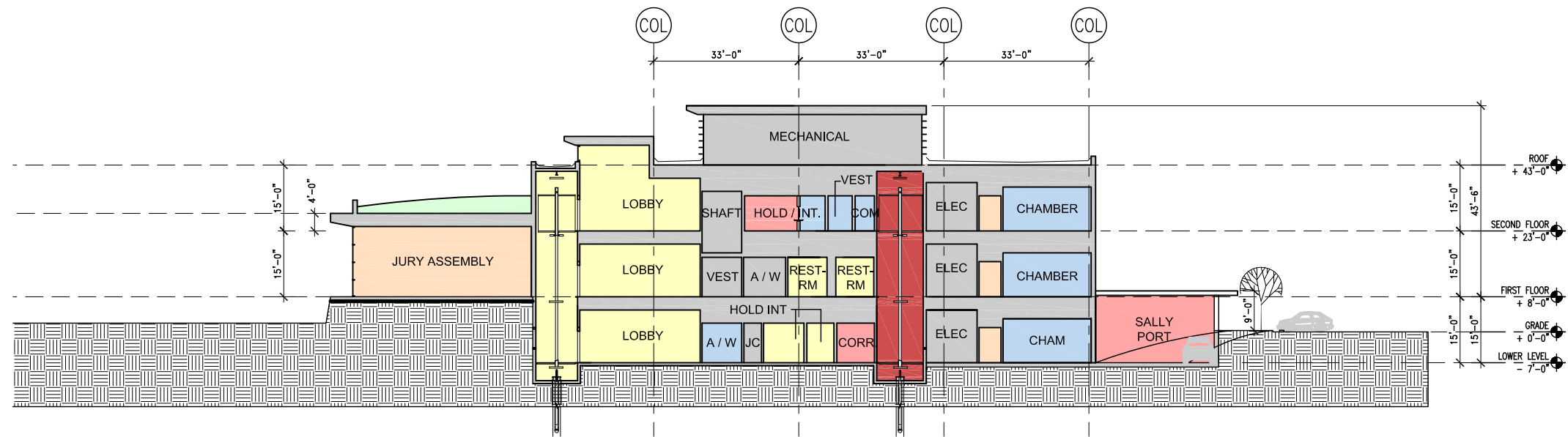
CENTRAL HOLDING / ARRAIGNMENT  
 JUNE 14, 2007



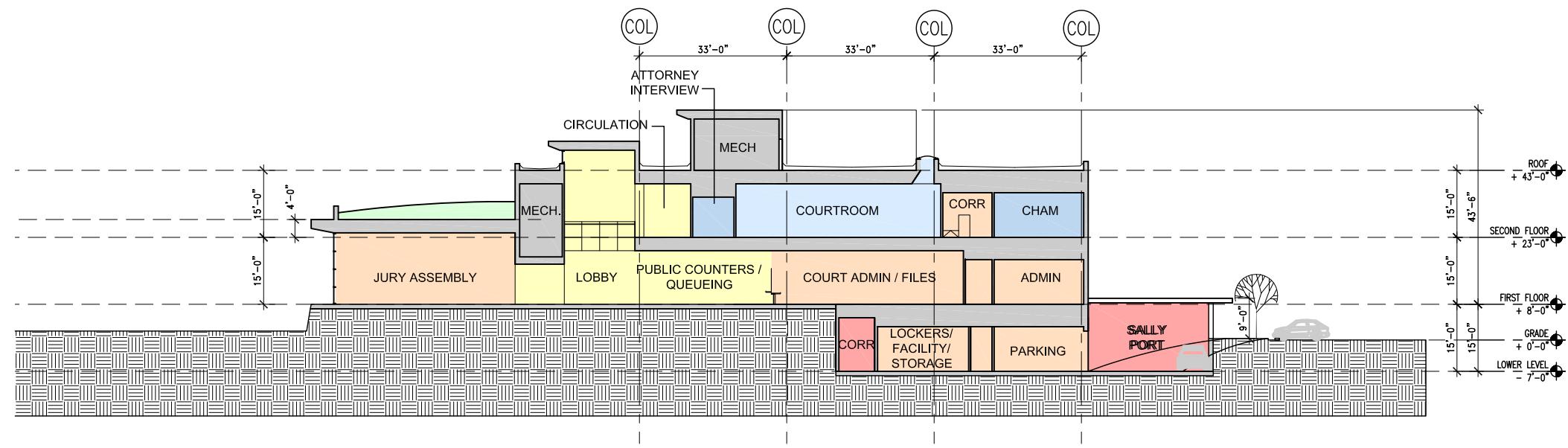


12 BUILDING SECTION  
 1/32" = 1'-0"

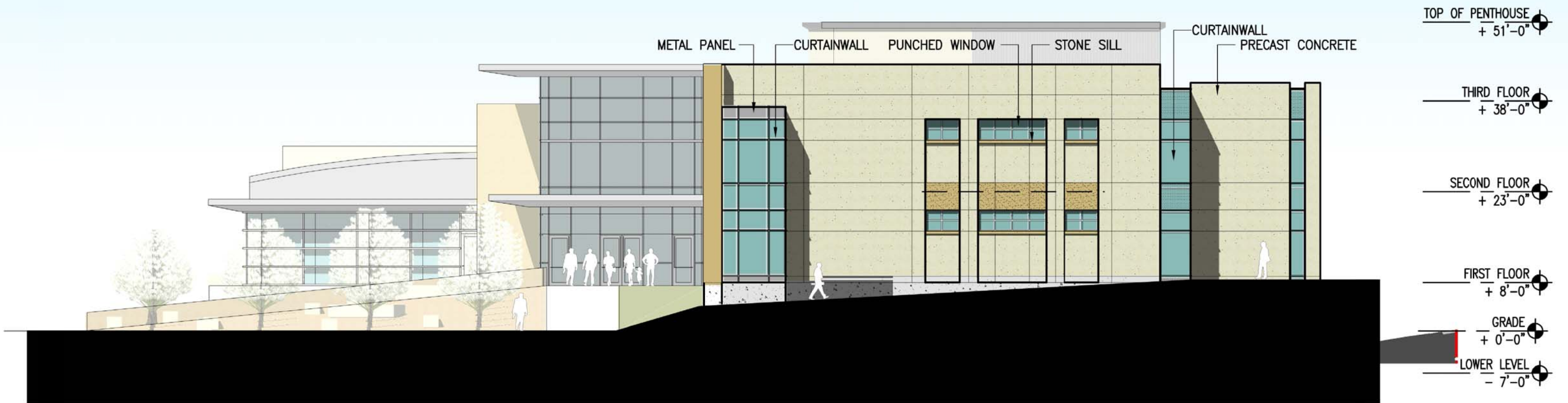




14 BUILDING SECTION  
 1/32" = 1'-0"



13 BUILDING SECTION  
 1/32" = 1'-0"



2 EAST ELEVATION  
 1/16" = 1'-0"

EAST CONTRA COSTA COURTHOUSE  
 100% SCHEMATIC DESIGN

ELEVATION  
 JUNE 14, 2007



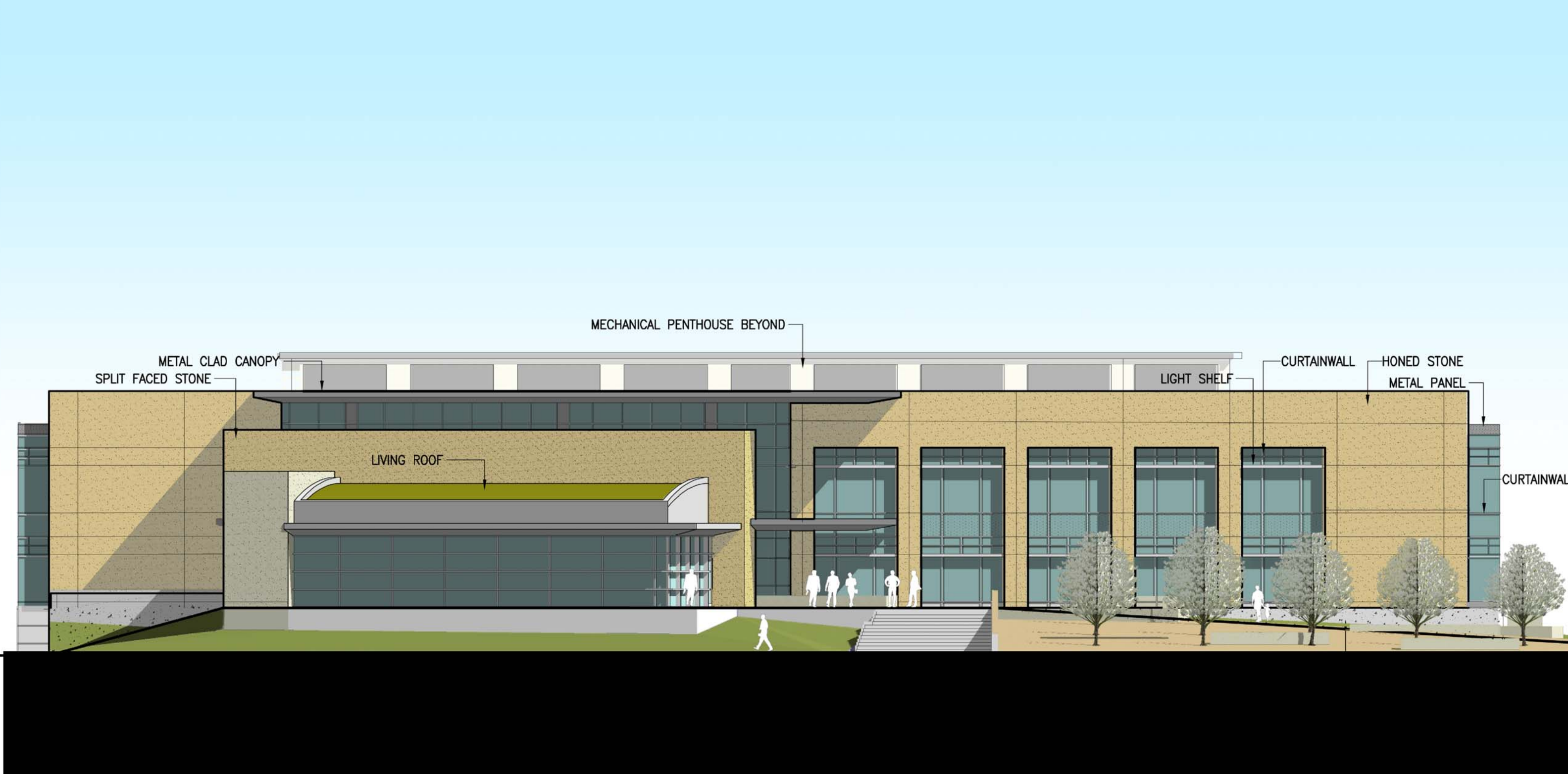


3 NORTH ELEVATION  
1/16" = 1'-0"

EAST CONTRA COSTA COURTHOUSE  
100% SCHEMATIC DESIGN

ELEVATION  
JUNE 14, 2007





1 SOUTH ELEVATION  
 1/16" = 1'-0"

EAST CONTRA COSTA COURTHOUSE  
 100% SCHEMATIC DESIGN

ELEVATION  
 JUNE 14, 2007





TOP OF PENTHOUSE  
 + 51'-0"  
 THIRD FLOOR  
 + 38'-0"  
 SECOND FLOOR  
 + 23'-0"  
 FIRST FLOOR  
 + 8'-0"  
 GRADE  
 + 0'-0"  
 LOWER LEVEL  
 - 7'-0"



4  $\frac{1}{16}'' = 1'-0''$   
 WEST ELEVATION

EAST CONTRA COSTA COURTHOUSE  
 100% SCHEMATIC DESIGN

ELEVATION  
 JUNE 14, 2007





EAST CONTRA COSTA COURTHOUSE  
100% SCHEMATIC DESIGN

PERSPECTIVE  
JUNE 14, 2007

