

# Scoping Meeting

## New Fresno Courthouse Environmental Impact Report

Fresno, California

---

Thursday, December 11, 2025



# Our Team



Alexandra Cervantes  
Sr. Facilities Analyst,  
Environmental Health & Safety  
Judicial Council

Tim Murchison  
Sr. Project Manager,  
Facilities Services  
Judicial Council



Houry A. Sanderson  
Presiding Judge  
Fresno County Superior Court

Jeffrey Y. Hamilton  
Assistant Presiding Judge  
Fresno County Superior Court



StephAnnie Roberts, Principal  
Environmental Planner  
Environmental Consultant  
Stantec

# Meeting Objectives

- Provide an overview of the Proposed Project
- Summarize the California Environmental Quality Act process
- Inform participants how to access Project documents
- Invite input on the scope of analysis for this EIR

# Meeting Agenda

- Project information
- Environmental subject areas
- Environmental review process
- How to provide input

# Project Location

- Fresno County
- City of Fresno (Intersection of M Street and Fresno Street within Courthouse Park)
- Fresno County Owned, approximately 2.09-acre project footprint.
- South Annex Jail and Fresno County Sheriff's Office buildings (2200 Fresno Street) to be demolished
- Within the Fulton Corridor Specific Plan area. Has both a Zoning and Land Use designation of Downtown General
- Connection with other Fresno County Facilities (Hall of Records, Underground parking facility)





# Location, Zoning, and Surrounding Land Uses

## **Courthouse Site Location**

The courthouse will be situated on a 2.09-acre portion within the 13.94-acre Courthouse Park at 2200 Fresno Street.

## **Zoning Designation**

Site is zoned Downtown General (DTG) supporting high-density civic and mixed-use development under the Fulton Corridor Specific Plan.

## **Surrounding Land Uses**

Nearby land uses include government offices, judicial facilities, public green spaces, and important civic institutions.

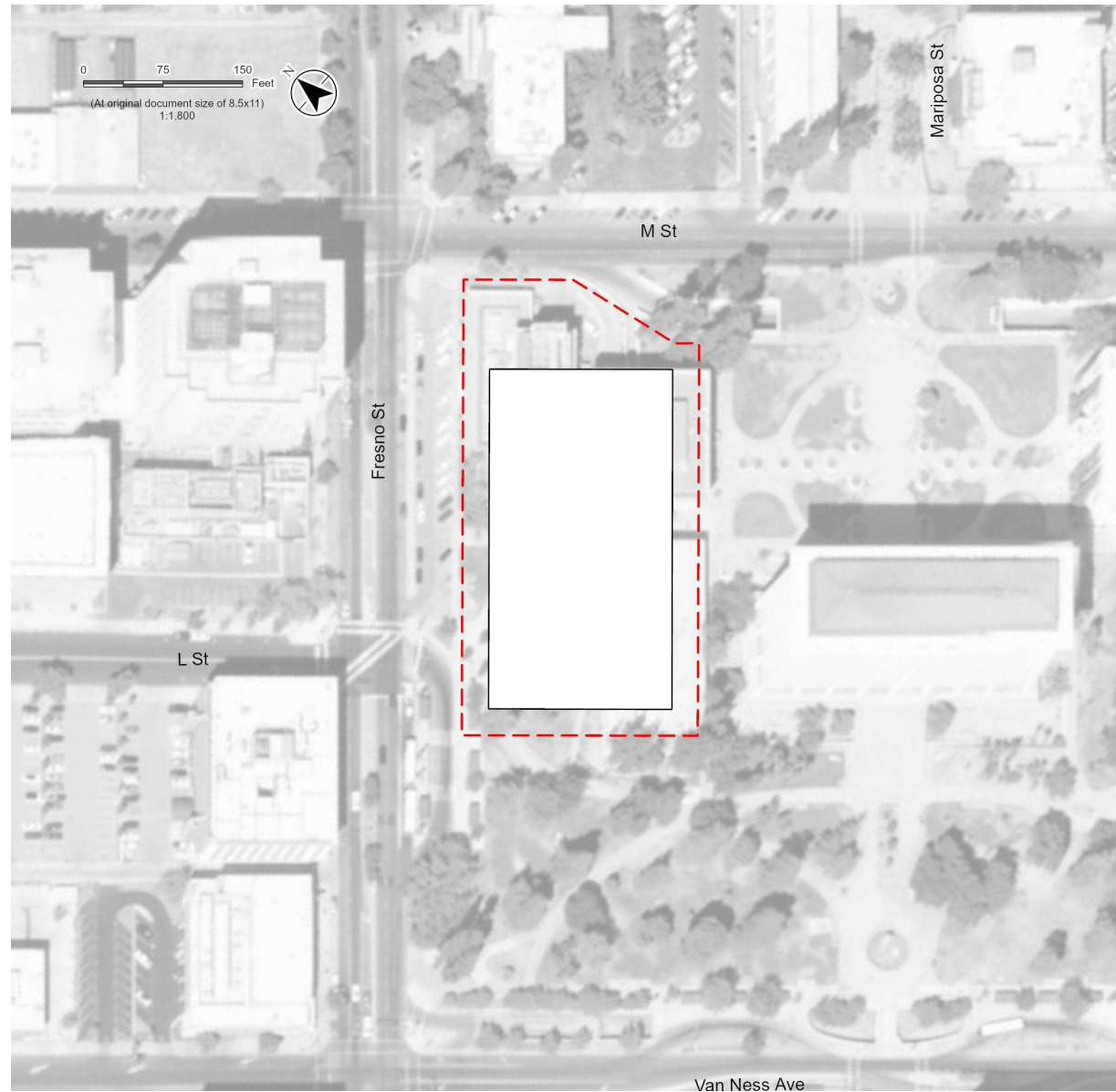
## **Accessibility and Proximity**

The site's adjacency to major streets and civic institutions enhances courthouse operational efficiency and public accessibility.

# Project Description

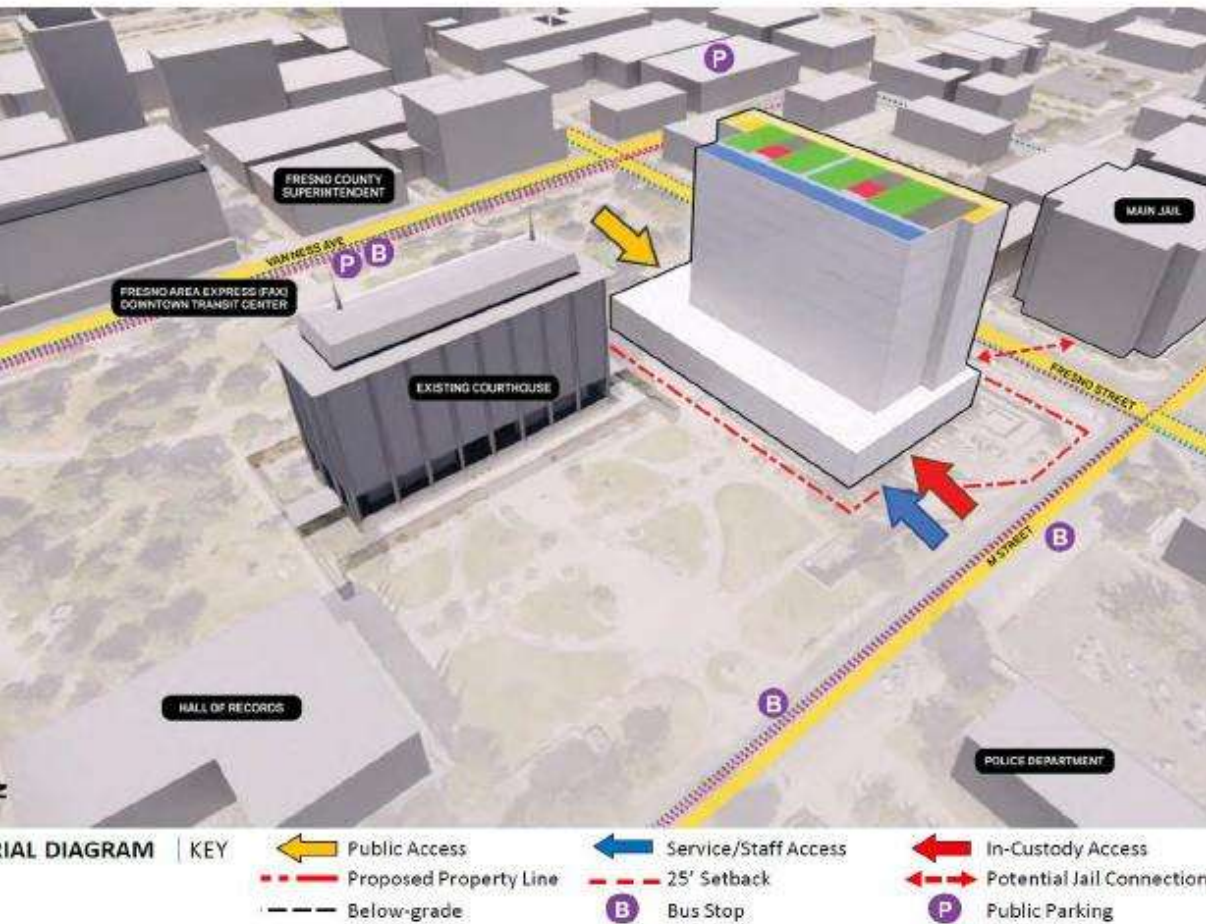
- Anticipated Design Build project
- Demolition of existing structures
  - (South Annex Jail and Fresno County Sheriff's Office)
- Construction of 11-story courthouse, including a basement level
  - Approx. 413,000 square feet
- Features:
  - 36 Courtrooms
  - Judicial Chambers
  - Clerks' Offices
  - Jury Rooms
  - Administrative areas
  - Secure Parking for Judges and Staff
  - Sallyport and tunnel linking to the Fresno County Jail for secure in-custody transport

# Conceptual Site Plan – Site 1A





## Site 1A - Preferred



## Conceptual Map – Site 1A

# Project Purpose and Objectives

- The project consolidates court operations from multiple locations to reduce space shortages and improve efficiency.
- Outdated buildings are replaced with new facilities meeting current safety and accessibility standards.
- New holding areas and secure circulation paths improve safety for in-custody defendants and staff.

# Environmental Review Process

## *California Environmental Quality Act (CEQA)*

- Basic Purposes of CEQA are to:
- Inform stakeholders/public about the potential significant environmental effects of proposed activities.
- Identify ways environmental impacts could be avoided or significantly reduced, including by considering project alternatives.
- Avoid or minimize significant impacts by incorporating feasible project changes and mitigation.

# Environmental Review Process



# Environmental Resource Categories

- Aesthetics
- Agriculture and Forestry Resources
- Air Quality
- Biological Resources
- Cultural, Historical, and Tribal Cultural Resources
- Energy
- Geology, Soils, and Paleontological Resources
- Greenhouse Gas Emissions
- Hazards and Hazardous Materials
- Hydrology and Water Quality
- Land Use and Planning
- Noise and Vibration
- Mineral Resources
- Population and Housing
- Public Services
- Recreation
- Transportation
- Utilities and Service Systems
- Wildfire Hazards

# Your Input

## Scope of Environmental Analysis

- What should we include?

## Mitigation Measures

- What mitigation measures should be considered?

## Alternatives

- What alternatives should we study?

## Interested Parties

- Who should we reach out to for input?



# Ways to Provide Comments

1) Utilize Comment Cards provided tonight.

2) Mail written comments to:

Alex Cervantes, Senior Facilities Analyst  
Judicial Council of California  
Facilities Services  
2860 Gateway Oaks Drive, 4th Floor  
Sacramento, California 95835-4336

3) E-mail comments to the Judicial Council of California:

Alexandra.Cervantes@jud.ca.gov

**Submit written comments by: December 29, 2025 @ 5:00 p.m.**

Information related to this Project is available for review on the Judicial Council's website at:

<https://courts.ca.gov/facilities/fresno-county-new-fresno-courthouse>