

Meeting Materials for the Court Facilities Advisory Committee

OPEN PUBLIC MEETING

SEPTEMBER 25, 2025



Judicial Council of California
Court Facilities Advisory Committee



Court Facilities Advisory Committee
Open Public Meeting via Videoconference

September 25, 2025

CONTENTS

1	Agenda
OPEN MEETING MATERIALS:	
2	Draft CFAC Meeting Minutes: ➤ May 23, 2025 Draft CCRS Meeting Minutes: ➤ September 22, 2025
3	Capital Outlay Projects Review: ➤ PowerPoint Slides ➤ Draft Kern–New East County Courthouse Space Program ➤ Draft Orange–New Orange County Collaborative Courthouse Space Program
4	Court Facilities Advisory Committee Roster



Judicial Council of California

Court Facilities Advisory Committee

www.courts.ca.gov/cfac.htm
cfac@jud.ca.gov

Request for ADA accommodations should be made at least three business days before the meeting and directed to:
JCCAccessCoordinator@jud.ca.gov

COURT FACILITIES ADVISORY COMMITTEE

NOTICE AND AGENDA OF OPEN MEETING

Open to the Public (Cal. Rules of Court, rule 10.75(c)(1) and (e)(1))

THIS MEETING IS BEING CONDUCTED BY VIDEOCONFERENCE

THIS MEETING IS BEING RECORDED

Date: September 25, 2025
Time: 12:00 p.m. – 1:00 p.m.
Public Videocast: <https://jcc.granicus.com/player/event/4678>

Meeting materials will be posted on the advisory body web page on the California Courts website at least three business days before the meeting.

Members of the public seeking to make a recording of the meeting must submit a written request at least two business days before the meeting. Requests can be e-mailed to cfac@jud.ca.gov.

Agenda items are numbered for identification purposes only and will not necessarily be considered in the indicated order.

I. OPEN MEETING (CAL. RULES OF COURT, RULE 10.75(c)(1))

Call to Order and Roll Call

Approval of Minutes

Approve the minutes of the Court Facilities Advisory Committee (CFAC) meeting held on May 23, 2025, and the minutes of the CFAC Courthouse Cost Reduction Subcommittee (CCRS) meeting held on September 22, 2025.

II. PUBLIC COMMENT (CAL. RULES OF COURT, RULE 10.75(k)(1))

This meeting will be conducted by videoconference with a livestream available for the public. As such, the public may submit comments for this meeting only in writing. In accordance with California Rules of Court, rule 10.75(k)(1), written comments pertaining to any agenda item of a regularly noticed open meeting can be submitted up to one complete business day before the meeting. For this specific meeting, comments should be e-mailed to cfac@jud.ca.gov or mailed or delivered to 455 Golden Gate Avenue, San Francisco, CA 94102, attention: Chris Magnusson. Only written comments received by 12:00 PM on September 24, 2025, will be provided to advisory body members prior to the start of the meeting.

III. DISCUSSION AND POSSIBLE ACTION ITEMS (ITEM 1)

Item 1

Capital Outlay Projects Review (Action Required)

Review of the reduced building sizes to reduce costs for the Kern–New East County Courthouse and Orange–New Orange County Collaborative Courthouse projects. This is a follow-up item from the CFAC’s March 2025 meeting, when the reduction of these projects was determined to assist smaller courthouse projects in the range of 1–4 courtrooms to become more cost-effective on a cost-per-square-foot basis to improve likelihood of funding.

Presenters: Mr. Tamer Ahmed, Director, Judicial Council Facilities Services

Mr. Chris Magnusson, Supervisor, Judicial Council Facilities Services

IV. ADJOURNMENT

Adjourn



Judicial Council of California

Court Facilities Advisory Committee

<https://courts.ca.gov/advisory-body/court-facilities-advisory-committee>
cfac@jud.ca.gov

COURT FACILITIES ADVISORY COMMITTEE

MINUTES OF OPEN MEETING

May 23, 2025

12:00 PM – 1:00 PM

Public Videocast

Advisory Body Members Present: Hon. Eric J. Wersching, Vice-Chair
Hon. JoAnn M. Bicego
Mr. Anthony P. Capozzi
Ms. Melissa Fowler-Bradley
Hon. William F. Highberger
Hon. Steven E. Jahr (Ret.)
Hon. Patricia L. Kelly
Hon. Elaine Lu
Ms. Kyria Martinez
Hon. David Edwin Power (Ret.)
Mr. Lee Seale
Mr. Thomas J. Warwick, Jr.

Advisory Body Members Absent: Hon. Brad R. Hill, Chair
Hon. Donald Cole Byrd
Ms. Krista LeVier
Hon. Gary R. Orozco
Hon. Sergio C. Tapia II

Others Present: The following Judicial Council staff were present:

Mr. Tamer Ahmed, Director, Judicial Council Facilities Services
Mr. Robert Carlson, Manager, Judicial Council Facilities Services
Mr. Zulqar Helal, Manager, Judicial Council Facilities Services
Mr. Chris Magnusson, Supervisor, Judicial Council Facilities Services
Ms. Fran Mueller, Deputy Director, Judicial Council Budget Services
Ms. Deepika Padam, Manager, Judicial Council Facilities Services
Ms. Michelle Petrushka, Senior Facilities Analyst, Judicial Council Facilities Services
Ms. Akilah Robinson, Associate Analyst, Judicial Council Facilities Services
Mr. Jagandeep Singh, Deputy Director, Judicial Council Facilities Services
Ms. Peggy Symons, Manager, Judicial Council Facilities Services
Ms. Sadie Varela, Facilities Analyst, Judicial Council Facilities Services

OPEN MEETING

Call to Order and Roll Call

In the chair's absence, the vice-chair called the meeting to order at 12:00 p.m., roll was taken, and opening remarks were made.

Public Videocast

A live videocast of the meeting was made available to the public through the Court Facilities Advisory Committee (CFAC) web page on the California Courts website listed above.

Approval of Minutes

The advisory committee voted—with abstention of Judge William F. Highberger, Ex-Officio non-voting member—to approve the minutes of the CFAC meeting held on March 12, 2025.
(*Motion: Kelly; Second: Fowler-Bradley*)

DISCUSSION AND ACTION ITEMS (ITEMS 1–2)

Item 1

Director's Report (No Action Required – Information Only)

Summary: The CFAC received an update from Mr. Tamer Ahmed on the following topics:

Shasta Courthouse Leak and Closure:

- On Saturday, May 10, 2025, a major water intrusion incident occurred at the New Redding Courthouse in Shasta County, caused by a broken coupling in the chilled water loop that allowed water to flood the second-floor ceiling down to the basement level:
 - Impacted areas included the clerk's office, elevator shafts, information technology room, and second-floor courtrooms and chambers.
 - A command center response team was established that included the court's presiding judge and court executive officer and Judicial Council Facility Operations and Pride, the building's service provider.
 - Initial remediation efforts included water extraction with use of blowers and dehumidifiers for drying affected spaces and inspection of plumbing system couplers.
 - Insurance providers were notified, and inspections/investigations are ongoing.
 - Court operations resumed on Tuesday, May 20th, excluding use of the second floor

Fiscal Year 2025–26 May Revise Budget Update:

- The May Revision to the Governor's Budget withdrew \$500,000 for statewide planning and studies and deferred starting the New Tracy Courthouse (\$2.9 million) for the Superior Court of San Joaquin County but did not alter proposed funding for active capital projects as follows:
 - \$5.2 million for working drawings and construction for the Butte County Juvenile Hall Addition and Renovation.
 - \$18.1 million for performance criteria for the New Fresno Courthouse.

- \$7.8 million for performance criteria for the New San Luis Obispo Courthouse.
- \$5.1 million for performance criteria for the New Solano Hall of Justice (Fairfield).

Judicial Branch Budget Committee (JBBC) Actions:

- On May 16, 2025, the JBBC recommended the following capital outlay-related Budget Change Concepts (BCCs) to the Judicial Council for development as 2026–27 Budget Change Proposals:
 - Capital outlay funding for fiscal years 2026–27 through 2030–31 (aka, Capital Outlay Budget Change Proposals (COBCPs) for the projects proposed in the five-year plan under agenda Item 2 below); and
 - Capital outlay projects reassessment and prioritization.

Action: The advisory committee took no action, as this item had only been presented for informational purposes.

Item 2

Draft Judicial Branch Five-Year Infrastructure Plan and Capital Outlay Budget Change Proposals for Fiscal Year 2026–27

Summary: The CFAC received a presentation on the capital projects proposed in the draft *Judicial Branch Five-Year Infrastructure Plan* and COBCPs for fiscal year 2026–27. This plan informs capital project funding requests for upcoming and outlying fiscal years. For consideration of funding in the 2026 Budget Act (FY 2026–27), submission of the plan and COBCPs are required in advance of the California Department of Finance’s early-August 2025 deadline.

Consistent with the [materials](#) (Tabs 3A–C.9 for agenda Item 2), which were posted online for public viewing in advance of the meeting, Mr. Chris Magnusson presented all slides.

In addition, the following comments were made:

1. Reassessments of all capital projects have been planned for every 10 years. Since the last reassessment in 2019, Judicial Council Facilities Services’ aim is to request funding in fiscal year 2026–27 to complete the next reassessment by 2029.
2. The *San Joaquin–New Tracy Courthouse* project is the only small project within Budget Year 1 of the five-year plan that has not yet received direction from the committee to reduce cost, and its number of courtrooms is consistent (at two courtrooms) with number of courtrooms of the *Plumas–New Quincy Courthouse* project. The committee and Judicial Council Facilities Services has struggled in keeping small courthouses cost effective, compared to planning for larger courthouses that are more cost effective, and must continue to do everything it can as stewards of the scarce public funds.

Action 1: The advisory committee—with abstention of Judge William F. Highberger, Ex-Officio non-voting member—voted to approve the following motion:

1. The *San Joaquin–New Tracy Courthouse* project is reduced from 28,000 gross square feet (GSF) to approximately 23,000 GSF and the costs of its phases adjusted accordingly in its COBCP and in the five-year plan that move forward, along with the other projects' COBCPs, to the Judicial Council for review and consideration of approval.

(Motion: Highberger; Second: Warwick)

Action 2: The advisory committee—with abstention of Judge William F. Highberger, Ex-Officio non-voting member—voted to approve the following motion:

2. Approve the delegation of the review of the committee's report to the Judicial Council to the CFAC Chair and Vice-chair.

(Motion: Kelly; Second: Highberger)

A D J O U R N M E N T

There being no further business, the meeting was adjourned at 1:00 p.m.

Approved by the advisory body on _____.



Judicial Council of California

Court Facilities Advisory Committee

<https://courts.ca.gov/advisory-body/court-facilities-advisory-committee>
cfac@jud.ca.gov

COURT FACILITIES ADVISORY COMMITTEE: COURTHOUSE COST REDUCTION SUBCOMMITTEE

MINUTES OF OPEN MEETING

September 22, 2025

12:15 PM – 1:05 PM

Public Videocast

Subcommittee Members Present: Hon. Steven E. Jahr (Ret.), CCRS Chair
Hon. Donald Cole Byrd
Ms. Melissa Fowler-Bradley
Hon. William F. Highberger
Hon. Gary R. Orozco
Mr. Thomas J. Warwick, Jr.
Hon. Eric J. Wersching, CFAC Vice-Chair

Subcommittee Members Absent: None

Others Present: The following Judicial Council staff/others were present:

Ms. Tara Leal, Court Executive Officer, Superior Court of Kern County
Mr. Randy Allenbaugh, Deputy Court Executive Officer of Facilities, Superior Court of Kern County

Hon. Scott B. Cooper, Collaborative Courts Supervising Judge, Superior Court of Orange County
Mr. David H. Yamasaki, Court Executive Officer, Superior Court of Orange County
Ms. Jeanne Chen, FAIA, Principal, Moore Ruble Yudell | Architects & Planners
Mr. Bob Dolbinski, AIA, Associate Principal, Moore Ruble Yudell | Architects & Planners
Mr. Don Yamami, AIA, Associate Principal, Moore Ruble Yudell | Architects & Planners
Mr. Charles J. Short, Courts Planner and President, CTS Business Solutions, LLC
Ms. Danielle Short, Courts Planner, CTS Business Solutions, LLC

Ms. Laila Waheed, Court Executive Officer and CJER Liaison, Superior Court of Nevada County

Mr. Tamer Ahmed, Director, Judicial Council Facilities Services
Mr. Robert Carlson, Manager, Judicial Council Facilities Services
Ms. Salena Chow, Chief Operating Officer, Judicial Council Executive Officer
Mr. Jack Collins, Manager, Judicial Council Facilities Services
Mr. Chris Magnusson, Supervisor, Judicial Council Facilities Services
Mr. Harry O'Hagin, Principal Manager, Judicial Council Facilities Services
Ms. Deepika Padam, Manager, Judicial Council Facilities Services
Mr. Troy Pennington, Architect, Judicial Council Facilities Services
Ms. Michelle Petrushka, Senior Facilities Analyst, Judicial Council Facilities Services
Ms. Akilah Robinson, Associate Analyst, Judicial Council Facilities Services
Mr. Jagandeep Singh, Deputy Director, Judicial Council Facilities Services
Ms. Erin Stagg, Attorney II, Judicial Council Legal Services
Ms. Maggie Stern, Attorney II, Judicial Council Legal Services
Ms. Sadie Varela, Facilities Analyst, Judicial Council Facilities Services

OPEN MEETING

Call to Order and Roll Call

In the subcommittee chair's absence at the start of the meeting, the CFAC Vice-Chair called the meeting to order at 12:15 p.m., roll was taken, and opening remarks were made.

Public Videocast

A live videocast of the meeting was made available to the public through the Court Facilities Advisory Committee (CFAC) web page on the California Courts website listed above.

DISCUSSION AND ACTION ITEMS (ITEM 1)

Item 1**Capital Outlay Projects Review**

Summary: The CFAC Courthouse Cost Reduction Subcommittee (CCRS) received a presentation on the reduced building sizes to reduce costs for the Kern–New East County Courthouse and Orange–New Orange County Collaborative Courthouse projects. This was a follow-up item from the CFAC's March 2025 meeting, when the reduction of these projects was determined to assist smaller courthouse projects in the range of 1–4 courtrooms to become more cost-effective on a cost-per-square-foot basis to improve likelihood of funding.

Mr. Tamer Ahmed introduced the item, stating that Judicial Council Facilities Services staff has worked with the superior courts of Kern and Orange counties in developing the reduced building sizes. He indicated the long-term aim is to improve the facilities standards for smaller courthouse projects in the range of 1–4 courtrooms. Consistent with the [materials](#) (Tabs 2A–C for agenda Item 1), which were posted online for public viewing in advance of the meeting, Mr. Chris Magnusson presented all slides.

In addition, the following comments were made:

1. The targeted area for siting the *Kern–New East County Courthouse* project is trending toward the east part of the county between Mojave and Rosamond for long-term staffing of the facility. Rosamond seems to be the fastest growing area owing to persons relocating from north Los Angeles County. The targeted service area for the new courthouse are the surrounding communities from Tehachapi to Rosamond.
2. The *New Orange County Collaborative Courthouse* project is likely to need more individual holding cells owing to the need to separate the various in-custody classifications and could benefit from an understanding of the operations/holding facilities lessons learned at the existing Hollywood Courthouse, which houses the Superior Court of Los Angeles County's Mental Health Court.

3. There is concern that in the effort to reduce the building size to reduce cost for the *Kern–New East County Courthouse* project, combining the jury assembly function into the public lobby may not work well practically for administering jury services, such as for juror orientation or to adequately separate prospective jurors from the general public, victims, witnesses, families, etc. With future consideration being that one of the project’s three courtrooms serve as the a trial courtroom, a dedicated space for all jury services makes the most sense to incorporate into the existing draft space program to assist the superior court in avoiding future operational issues with administering jury services.

Action: The subcommittee—with abstentions of judges Donald Cole Byrd and William F. Highberger, Ex-Officio non-voting members—voted to approve the following motion:

1. Approve the updated projects’ sizes and budgets of the *Kern–New East County Courthouse* and *Orange–New Orange County Collaborative Courthouse* projects—including amending the *Kern–New East County Courthouse* project’s building size from approximately 24,000 to 26,000 GSF for purposes of including an additional 2,000 SF in the project’s draft space program for space dedicated to jury services and with the project budget adjusted accordingly—to proceed to the CFAC for review and to consider approval for updating the five-year plan and the projects’ budget documents for Department of Finance review.

(Motion: Fowler-Bradley; Second: Warwick)

A D J O U R N M E N T

There being no further business, the meeting was adjourned at 1:05 p.m.

Approved by the subcommittee on _____.

Capital Outlay Projects Review

Kern–New East County Courthouse and Orange–New Orange County Collaborative Courthouse

Court Facilities Advisory Committee Meeting
September 25, 2025



Overview

- **March 2025** – The Court Facilities Advisory Committee (CFAC) reviewed the draft *Judicial Branch Five-Year Infrastructure Plan for Fiscal Year 2026–27*, discussing that on a cost-per-square-foot basis and involving the CFAC’s Courthouse Cost Reduction Subcommittee (CCRS), project scopes of smaller courthouses in the range of 1–4 courtrooms should be developed more cost-effectively to improve likelihood of funding.
- **CFAC’s Direction:** Refer the **Kern–New East County Courthouse** and **Orange–New Orange County Collaborative Courthouse** projects for CCRS review to be more cost-effective and report back to the CFAC by October 2025.

Overview, *continued*

- **May 2025** – The CFAC approved the five-year plan to proceed to the Judicial Council with cost-placeholders for these projects.
- **July 2025** – The Judicial Council approved the five-year plan and Capital Outlay Budget Change Proposals (COBCPs) for submission to the Department of Finance (DOF).
- **August 2025** – The five-year plan and COBCPs were submitted with cost-placeholders to meet DOF's deadline.
- **September 22, 2025** – The CCRS reviewed and approved the projects' updated sizes and budgets to proceed to the CFAC including an additional 2,000 SF for Kern's jury services.

Kern–New East County Courthouse

Project Overview

The new courthouse will consolidate all Mojave court operations into a single building for criminal, civil, family law, traffic, and small claims case types, vacating three county-owned facilities in Mojave: Main Court Facility, County Administration Building, and Court Modular.

No. of Courtrooms:	3 (replaces 3 existing courtrooms assigned to 3 judges)
Site Area:	Approx. 3.6-acres; secure parking for judicial officers and parking for public/jurors/staff
Proposed Site Location:	Mojave area
Service Area Population:	Approx. 75,000 (surrounding communities from Tehachapi to Rosamond)
Planned Number of Stories:	1
Delivery Method:	Design-Build
Project Status:	Unfunded and projected for initial funding in FY 2026–27

Orange–New Orange County Collaborative Courthouse Project Overview

The new courthouse will consolidate all Collaborative court operations/services into a single building, vacating the county-owned Central Justice Center Annex and consolidating multiple calendars in the Central Justice Center and Men’s Jail as well as expanding services countywide.

No. of Courtrooms:	4 (increased from 3, based on growing caseload— SEE SLIDE 6)
Site Area:	Approx. 3.3-acres; secure parking for judicial officers and parking for the public to be determined
Proposed Site Location:	State-owned Flower Street Parking Lot in Santa Ana (adjacent to the Central Justice Center; court-funded site feasibility study underway for test-fit — SEE SLIDES 7–12)
Service Area Population:	Countywide
Planned Number of Stories:	2
Delivery Method:	Design-Build
Project Status:	Unfunded and projected for initial funding in FY 2027–28

Orange–New Orange County Collaborative Courthouse Project Overview, *continued*

NOTE: These calendars are proposed in addition to Prop. 36-related cases, which continue to increase and particularly the number of arraignments.



SUD = Substance Use Diversion
DUI = Driving Under Influence

WIT = Whatever It Takes

LPS = Lanterman-Petris-Short Act

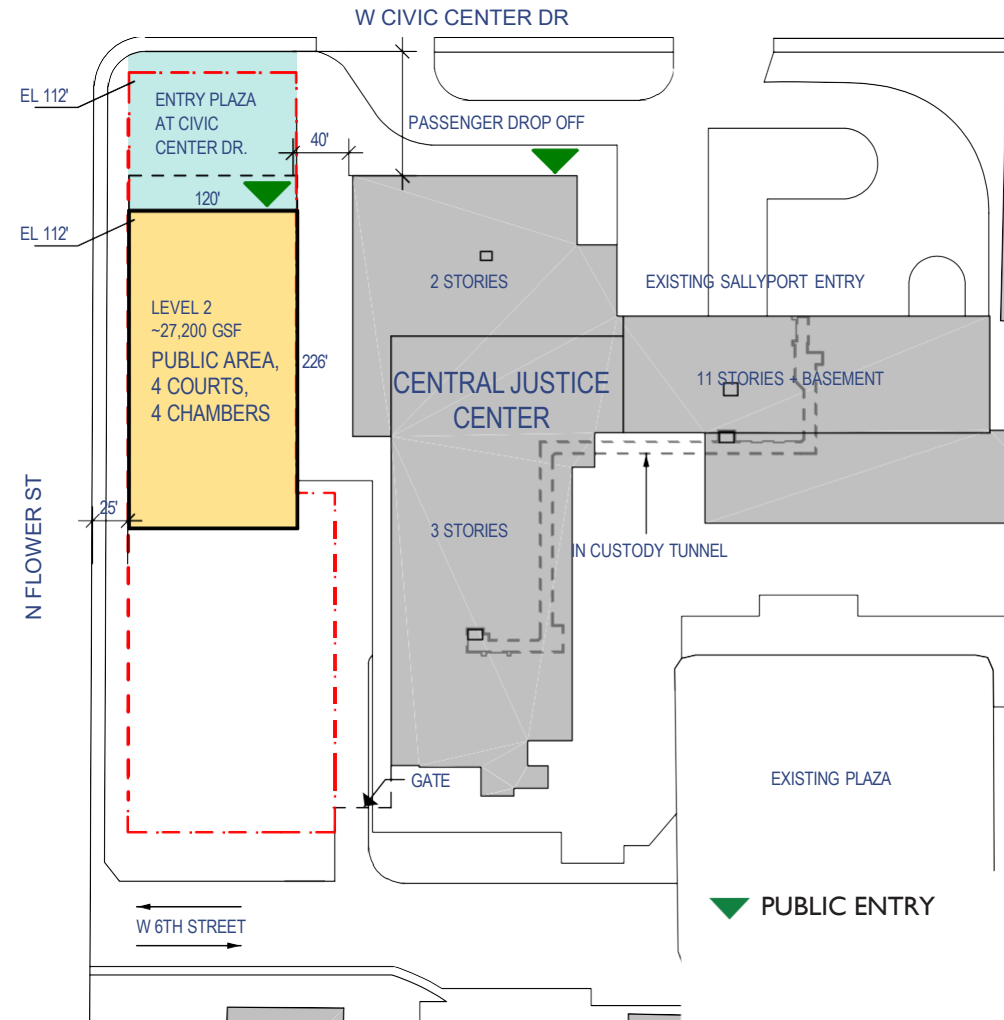
IST = Incompetent to Stand Trial

Orange–New Orange County Collaborative Courthouse Project Overview, *continued*



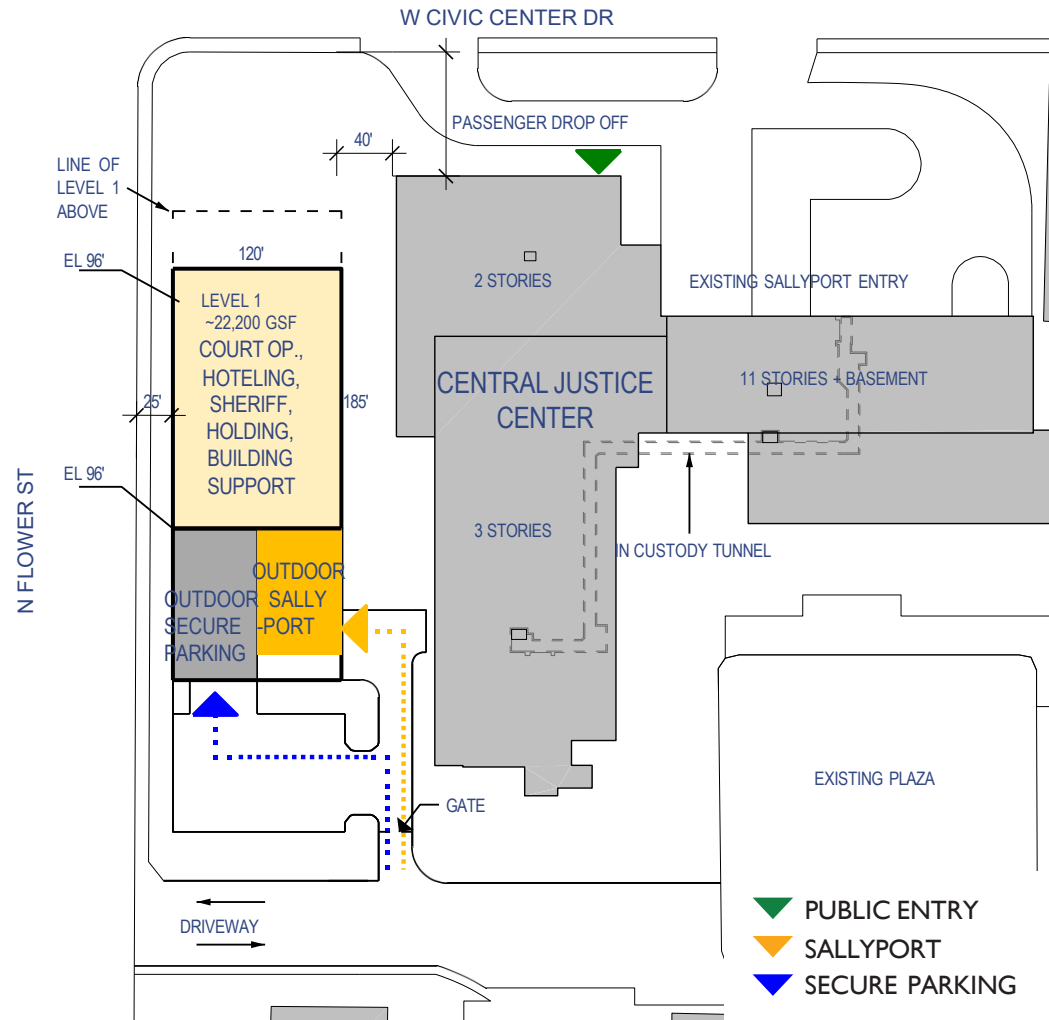
Aerial Photo - Flower Street Parking Lot Site

Orange–New Orange County Collaborative Courthouse Project Overview, *continued*



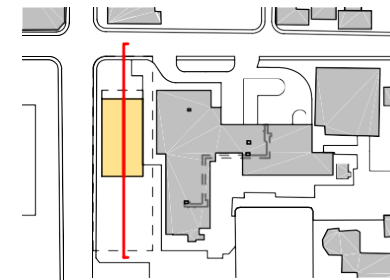
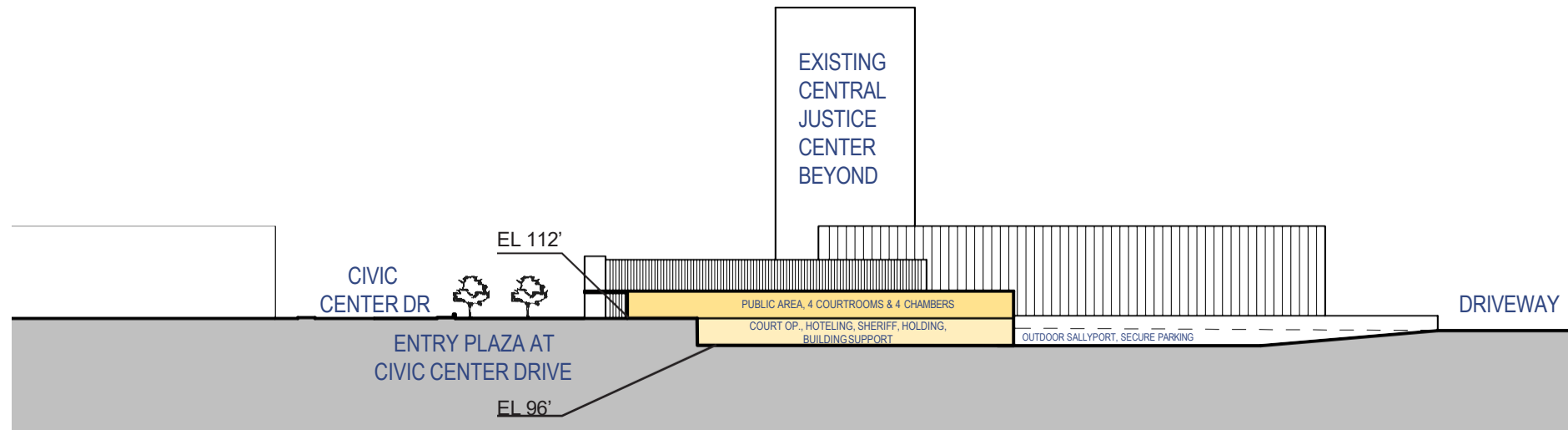
Level 2 - Flower Street Parking Lot Site

Orange–New Orange County Collaborative Courthouse Project Overview, *continued*



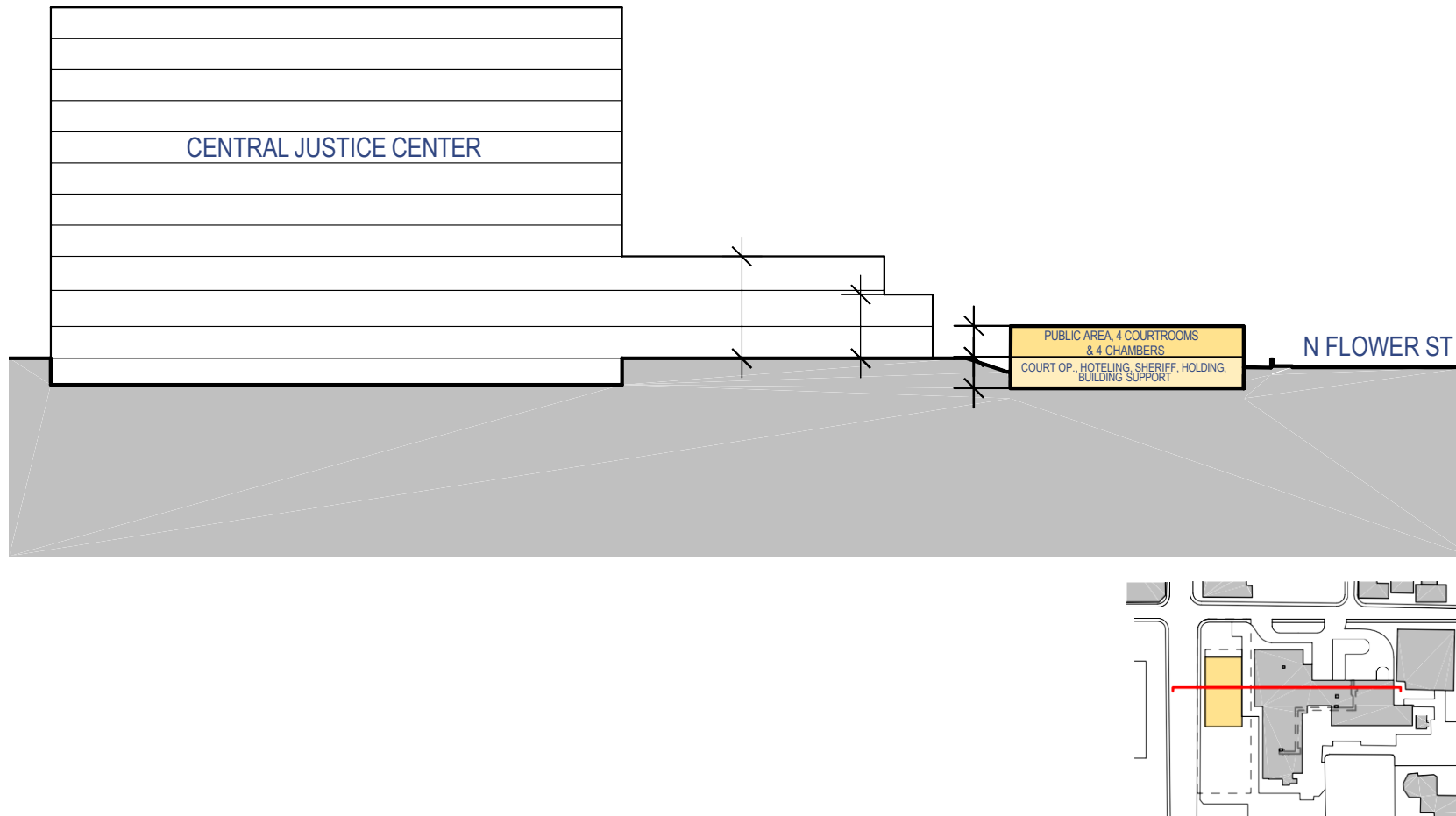
Level 1 - Flower Street Parking Lot Site

Orange–New Orange County Collaborative Courthouse Project Overview, *continued*



Section 1 - Flower Street Parking Lot Site

Orange–New Orange County Collaborative Courthouse Project Overview, *continued*



Section 2 - Flower Street Parking Lot Site

Orange–New Orange County Collaborative Courthouse Project Overview, *continued*



Projected Massing - Flower Street Parking Lot Site

Project Size and Cost Reductions

County	Capital Project Name	Building Size (approx. GSF)		Total Project Budget ¹	
		March 2025	September 2025	March 2025	September 2025
Kern	New East County Courthouse ²	45,000	26,000	\$ 84,519	\$ 70,422
Orange	New Orange County Collaborative Courthouse	82,000	50,000	\$ 205,876	\$ 130,159

Table Footnotes:

- 1. Dollars are in thousands.
- 2. At its meeting on September 22, 2025, the CFAC Courthouse Cost Reduction Subcommittee (CCRS) approved an additional 2,000 SF for dedicated jury services space, and the building size and project budget increased accordingly from 24,000 to 26,000 GSF and from \$65.3 to \$70.4 million.

Draft space program for
**Kern–New East County
 Courthouse project at
 approx. 26,000 GSF is Tab 3B
 of meeting materials.**

Superior Court of California, County of Kern
 New East County Courthouse
 DRAFT Projected Staff and Space Requirements Summary
 GSF Reduction per Mar. 12, 2025 CFAC Direction/Sept. 22, 2025 CCRS Adjustment
 September 25, 2025

<u>Space Program Summary</u>		CURRENT NEED			
Division/Functional Area		Courtrooms	Total Staff	Total NSF ³	Total CGSF ⁴
1.0	Public Area - Lobby/Security Screening	-	2	1,092	1,310
2.0	Court Sets	3	3	6,940	8,328
3.0	Chambers & Courtroom Support	-	9	1,838	2,206
4.0	Court Operations	-	5	548	548
5.0	Clerk's Office	-	15	1,574	1,968
6.0	Self-Help Center/Family Court Services	-	2	730	876
7.0	Sheriff	-	-	294	338
8.0	Central In-Custody Holding	-	-	570	770
9.0	Staff Support	-	-	720	864
10.0	Building Support	-	2	1,210	1,513
11.0	Jury Services	-	-	1,601	2,000
Subtotal		3	38	17,117	20,719
Grossing Factor ¹					1.24
Total Gross Square Feet (GSF)²					25,692
GSF per Courtroom					8,564

Table Footnotes:

1. The Grossing Factor includes space for staff and public restrooms, janitor's closets, electrical closets, circulation, etc.
2. The building's size has been reduced from approx. 45,000 GSF per CFAC's direction on March 12, 2025.
3. NSF = Net Square Feet.
4. CGSF = Component Gross Square Feet.

Draft space program for
**Orange–New Orange County
 Collaborative Courthouse**
 project at approx. 50,000 GSF
 is **Tab 3C** of meeting materials.

Superior Court of California, County of Orange New Orange County Collaborative Courthouse DRAFT Projected Staff and Space Requirements Summary GSF Reduction per Mar. 12, 2025 CFAC Direction September 22, 2025				
Parking at Grade: Two Levels; Secure Parking & Central Holding's Sallyport at grade directly adjacent to the building. Four Courtrooms on the Second Floor with Chambers/Court Support.				
Space Program Summary		CURRENT NEED		
Division / Functional Area	Courtrooms	Total Staff	Total NSF ² Permanent	Total CGSF ³
1.0 Public Area - Lobby, Security Screening	-	3	1,890	2,268
2.0 Court Sets	4	20	10,712	13,926
3.0 Chambers & Courtroom Support	-	5	2,498	3,247
4.0 Court Operations	-	16	2,056	2,776
5.0 District Attorney (Hoteling)	-	5	832	1,082
6.0 Public Defender (Hoteling)	-	5	564	733
7.0 Probation (Hoteling)	-	7	828	1,076
8.0 Community Non-Profits Partner Offices (Hoteling)	-	10	2,160	2,808
9.0 Sheriff	-	1	1,055	1,372
10.0 Central In-Custody Holding (Assumes Secure Exterior Vehicle Sallyport)	-	3	1,295	1,943
11.0 Building Support	-	0	3,396	4,152
12.0 Secure Parking (Site Requirement with Direct Access to Restricted Building Circulation)			N/A	N/A
Subtotal	4	75	27,286	35,382
Building Grossing Factor = 40% of the CGSF ¹				1.40
Total Gross Square Feet (GSF)				49,534
GSF per Courtroom				
Table Footnotes: 1. The Grossing Factor includes space for staff and public restrooms, janitor's closets, electrical closets, mechanical shafts, circulation, etc. 2. NSF = Net Square Feet. 3. CGSF = Component Gross Square Feet.				

Requested Action

1. Based on the CFAC Courthouse Cost Reduction Subcommittee's recommendation, approve the updated projects' sizes and budgets for updating the five-year plan and the projects' budget documents for Department of Finance review.

Questions?

Superior Court of California, County of Kern
New East County Courthouse
DRAFT Projected Staff and Space Requirements Summary
GSF Reduction per Mar. 12, 2025 CFAC Direction/Sept. 22, 2025 CCRS Adjustment
September 25, 2025

<u>Space Program Summary</u>		CURRENT NEED			
Division/Functional Area		Courtrooms	Total Staff	Total NSF ³	Total CGSF ⁴
1.0	Public Area - Lobby/Security Screening	-	2	1,092	1,310
2.0	Court Sets	3	3	6,940	8,328
3.0	Chambers & Courtroom Support	-	9	1,838	2,206
4.0	Court Operations	-	5	548	548
5.0	Clerk's Office	-	15	1,574	1,968
6.0	Self-Help Center/Family Court Services	-	2	730	876
7.0	Sheriff	-	-	294	338
8.0	Central In-Custody Holding	-	-	570	770
9.0	Staff Support	-	-	720	864
10.0	Building Support	-	2	1,210	1,513
11.0	Jury Services	-	-	1,601	2,000
Subtotal		3	38	17,117	20,719
Grossing Factor ¹					1.24
Total Gross Square Feet (GSF)²					25,692
GSF per Courtroom					8,564

Table Footnotes:

1. The Grossing Factor includes space for staff and public restrooms, janitor's closets, electrical closets, circulation, etc.
2. **The building's size has been reduced from approx. 45,000 GSF per CFAC's direction on March 12, 2025.**
3. NSF = Net Square Feet.
4. CGSF = Component Gross Square Feet.

Superior Court of California, County of Kern
New East County Courthouse
DRAFT Space Program Detail
September 25, 2025

Space/Component		Unit/Area Std.	No. of Staff	No. of Spaces	NSF	Comments
1.0	Public Area - Lobby/Security Screening					
1.1.1	Entry Vestibule	100	-	1	100	One set of double doors, revolving door, or similar.
1.1.2	Security Screening Queuing	252	-	1	252	Sized for 18 persons; staff to be badged/enter front door.
1.1.3	Weapons Screening Station	200	2	1	200	2 Security Staff. Locate between lobby and queuing.
1.1.4	<i>x-ray machines</i>	80				One machine
1.1.5	<i>metal detectors</i>	70				One machine
1.1.6	<i>retrieval</i>	50				
1.1.7	Security Staff Storage	40	-	1	40	Storage room, secure gun lockers on wall.
1.1.8	Secure Public Lobby	600	-	1	500	
1.1.9	Vending Area	12	-	3	-	3 machines @ 12 NSF each included in Grossing Factor.
1.1.10	Information Kiosk	48	-	1	-	In lobby/included in Grossing Factor.
	Total Staff and NSF		2		1,092	
	Grossing Factor	20%			218	Large open space with few interior walls.
	Total CGSF				1,310	

Superior Court of California, County of Kern
New East County Courthouse
DRAFT Space Program Detail
September 25, 2025

Space/Component		Unit/Area Std.	No. of Staff	No. of Spaces	NSF	Comments
2.0	Court Sets					
2.1.1	Courtroom, Multipurpose (Group 1 - Typical Center Bench A)	1,850	-	3	5,550	48 seats gallery, 74 total (Voir Dire), includes ramp
2.1.2	Courtroom Clerk Workstation	-	-	6	-	2 stations in each courtroom. For use by 3.1.2 Judicial Ctrm. Assistants.
2.1.3	Bailiff (CSO) Workstation	-	3	3	-	Located in courtrooms. Chair and moveable lectern.
2.1.4	Courtroom Clerk Copy/Supply/Workroom	35	-	1	35	Niche on secure corridor with cabinets above.
2.1.5	Exhibit/Evidence Storage	50	-	2	100	Two shared rooms, or one combined/shared room.
2.1.6	Courtroom A/V Closet	30	-	-	-	Deleted. Design the technology in. No mobile carts. Wiring accessible from secure circulation.
2.1.7	Courtroom Holding/Attorney Interview (Holding Core B)	605	-	-	-	2 deleted. Use Central Holding as court holding adjacent to courtrooms.
2.1.8	Attorney/Client Conference Room	80	-	6	480	2 per courtroom.
2.1.9	Entry Vestibule	45	-	3	135	1 per ea. Multipurpose courtroom.
2.1.10	Jury Deliberation Suite	400	-	1	400	
2.1.11	Courtroom Waiting	80	-	3	240	Open seating outside courtrooms.
	Total Staff and NSF		3		6,940	
	Grossing Factor	20%			1,388	
	Total CGSF				8,328	
3.0	Chambers & Courtroom Support					
3.1.1	Judicial Chambers (includes restroom, closet)	400	3	3	1,200	
3.1.2	Judicial Courtroom Assistant Workstation	48	6	6	288	Group together off secure corridor.
3.1.3	Judicial Conference Room	350	-	1	350	Seats 10-15.
3.1.4	Copy/Supply Alcove	80	-	-	-	Removed. Share with 2.1.4 Copy/Supply/Workroom.
3.1.5	Coffee Alcove	80	-	1	-	Place along corridor outside judicial conference room. NSF in circulation.
	Total Staff and NSF		9		1,838	
	Grossing Factor	20%			368	
	Total CGSF				2,206	

Superior Court of California, County of Kern
 New East County Courthouse
 DRAFT Space Program Detail
 September 25, 2025

Space/Component		Unit/Area Std.	No. of Staff	No. of Spaces	NSF	Comments
4.0	Court Operations					
	4.1 Court Reporters/Interpreters					
4.1.1	Staff Office	80	3	3	240	For privacy for contract staff and employees.
	4.2 Other Staff					
4.2.1	Building Services Worker Workstation	48	1	1	48	
4.2.2	IT Staff Office	120	1	1	120	Open work space.
4.2.3	IT Work Room/Storage Room	140		1	140	Includes workbenches and tool cabinets.
	Total Staff and NSF		5		548	
	Grossing Factor	0%		1	-	Locate with Clerk's Office or other.
	Total CGSF				548	

Superior Court of California, County of Kern
New East County Courthouse
DRAFT Space Program Detail
September 25, 2025

Space/Component		Unit/Area Std.	No. of Staff	No. of Spaces	NSF	Comments
5.0	Clerk's Office					
	5.1 Service Counter - Public					
5.1.1	Public Queuing Area	80	-	1	80	Sized for 10 persons.
5.1.2	Public Seating Area	36	-	1	36	Sized for 6 persons. Use 6 NSF per person for bench seating.
5.1.3	Copier/Drop Box/Forms Counter	30	-	-	-	In lobby grossing factor.
5.1.4	Public Records/Computer terminals	9	-	2	-	In lobby grossing factor. Plan for 9 NSF ea. - 3' x 3' carrels with baffles/screen diffusers.
	5.2 Service Counter - Staff					
5.2.1	Counter Workstation - Assigned	48	3	3	144	3 Court Services Specialists assigned to workstations. NOTE: Currently 5 windows/explore need to increase to 6 in design.
5.2.2	Work Counter/Forms Storage	4	-	-	-	Include in counter station (underneath).
5.2.3	Network Printer/Fax/Copier Alcove	15	-	1	-	In Clerk's Office grossing factor.
	5.3 Staff					
5.3.1	Court Supervisor Office	150	1	1	150	
5.3.2	Assistant Court Supervisor Office	120	3	3	360	
5.3.3	Court Services Specialist Workstation	48	8	8	384	
	5.4 Shared Functions					
5.4.1	Small Conference Room	140	-	1	140	Seats 4.
5.4.2	Copy/Work Room	100	-	1	100	
5.4.3	Cash Safe	10	-	1	-	Locate inside exhibits storage.
5.4.4	Exhibits Storage	100	-	1	100	Include equipment storage. Use storage by courtrooms.
5.4.5	Mail Room	80	-	1	80	Entry door access and screened.
	Total Staff and NSF		15		1,574	
	Grossing Factor	25%			394	
	Total CGSF				1,968	

Superior Court of California, County of Kern
New East County Courthouse
DRAFT Space Program Detail
September 25, 2025

Space/Component		Unit/Area Std.	No. of Staff	No. of Spaces	NSF	Comments
6.0	Self-Help Center/Family Court Services					Self-Help/Family Court Services Within Shared Space
	6.1 Public Area					
6.1.1	Staff Office/Small Meeting Room	140	1	1	140	For Contract Staff (e.g., Family Law Facilitator).
6.1.2	Court Services Specialist Workstation	48	1	1	48	
6.1.3	Waiting Area	64	-	1	64	
6.1.4	Computer Workstations	9	-	6	54	Public use; includes printers; Carrel style (3' wide x 3' deep w/ chair); located with 6.1.3 Waiting Area.
6.1.5	Work Area/Tables	40	-	4	160	Public use. Four tables.
6.1.6	Form Display	25	-	1	-	Use wall display with NSF in circulation in front.
	6.2 Staff Support					
6.2.1	Copy/Printer/Supply Area	24	-	1	24	8' x 3' deep counter with cabinets above/below.
6.2.2	Shared Conference Room	240	-	1	240	Seats 8. Dual-purpose mediation space.
	6.3 Children's Waiting Room					Room not required by the Court. Child waiting in ctrm. waiting area.
6.3.1	Play Area	150	-	-	-	
6.3.2	Restroom	60	-	-	-	
Total Staff and NSF			2		730	
Grossing Factor		20%			146	
Total CGSF					876	

Superior Court of California, County of Kern
New East County Courthouse
DRAFT Space Program Detail
September 25, 2025

Space/Component	Unit/Area Std.	No. of Staff	No. of Spaces	NSF	Comments
7.0 Sheriff					Assumes Sheriff's Staff Begin Shift at Sheriff's Mojave Substation
7.1 Support					Locate Adjacent to Security Screening at Entry
7.1.1 Central Security Office	150	-	1	150	Combined for building security and in-custody holding areas.
7.1.2 Security Equipment Closet	80	-	1	80	Includes equipment racks and gun safe.
7.1.3 Men's Toilet Room	64	-	-	-	Use 7.1.4 Unisex Toilet.
7.1.4 Unisex Toilet Room	64	-	1	64	Single toilet; locate next to 7.1.1 Security Office.
7.1.5 Break Room/Officer Waiting	400	-	-	-	Share 9.1.1 Staff Break Room; use 9.1.4 Staff Lockers.
Total Staff and NSF		-		294	
Grossing Factor	15%			44	
Total CGSF				338	
8.0 Central In-Custody Holding					Use as Courtroom Holding and Locate with 2.0 Court Sets
8.1 In-Custody Movement					
8.1.1 Vehicular Sally Port/Patrol Vehicle Parking	1,200	-	1	-	Exterior sallyport. 2 Econoline vans.
8.1.2 Pedestrian Sally Port	80	-	1	80	
8.1.3 Detainee Staging	80	-	1	-	Included in circulation.
8.2 Central Holding, Adult		Total Cells	3		ADT: 12 / Total Rated Capacity: 16
					Transport is 1x Day (Tues.-Fri.) from Lerdo Jail 75 Miles Away
8.2.1 Large Holding Cell - Male	110	-	1	110	Total rated capacity: 8
8.2.2 Small Holding Cell - Male	70	-	1	70	Total rated capacity: 4
8.2.3 Small Holding Cell - Female	70	-	1	70	Total rated capacity: 4
8.3 Attorney Visitation Areas					
8.3.1 Attorney Vestibule/Waiting	80	-	-	-	Controlled access from public corridor/lobby. Waiting is in lobby.
8.3.2 Attorney-Client Interview Room	90	-	1	90	
8.4 Holding Support					
8.4.1 Food Storage - In-custodies	6	-	1	6	Minifridge for lunches.
8.4.2 Storage Room	40	-	1	40	
8.4.3 Staff Restroom	64	-	1	64	ADA compliant.
8.4.4 Janitor Closet	40	-	1	40	
Total Staff and NSF		-		570	
Grossing Factor	35%			200	
Total CGSF				770	

Superior Court of California, County of Kern
 New East County Courthouse
DRAFT Space Program Detail
 September 25, 2025

Space/Component		Unit/Area Std.	No. of Staff	No. of Spaces	NSF	Comments
9.0	Staff Support					
	9.1 Staff Support					
9.1.1	Staff Break Room	350	-	1	350	Kitchenette including sink, microwave, refrigerator, and seating.
9.1.2	Staff Toilet Room	60	-	2	120	2 within secure corridor.
9.1.3	Staff Lactation Room	50	-	1	50	
9.1.4	Staff Lockers	10	-	12	120	Locate along corridors in staff secure area. Also for Sheriff Deputies.
9.1.5	Staff Shower/Restroom	80	-	1	80	Unisex for LEED Rating Credits.
	Total Staff and NSF		-		720	
	Grossing Factor	20%			144	
	Total CGSF				864	

Superior Court of California, County of Kern
New East County Courthouse
DRAFT Space Program Detail
September 25, 2025

Space/Component		Unit/Area Std.	No. of Staff	No. of Spaces	NSF	Comments
10.0	Building Support					
	10.1 Public Area Support					
10.1.1	Public Vending Alcove	80	-	-	-	Located in lobby.
10.1.2	Public Lactation Room	50	-	1	50	Locate for easy public access.
	10.2 Related Justice Agency Space					
10.2.1	Multipurpose Room (Hoteling)	150	-	1	150	Day use by justice partners; dual purpose for media.
	10.3 Building Operations					
10.3.1	Loading/Receiving Area	40	-	1	40	Apron off of panel truck loading area.
10.3.2	Trash/Recycling Collection Area	80	-	-	-	In exterior space.
10.3.3	Mailroom	80	-	-	-	In Clerk's Office.
10.3.4	General Building Storage Area (Building Maintenance and Court)	200	-	1	200	For building maintenance equipment and materials, Court's furniture, etc.
10.3.5	UPS Room	100	-	1	100	Per CTCFS Sect. 17.B.1 (p. 17.4): UPS Room should not adjoin MDF Room.
10.3.6	Main Electrical Room	140	-	1	140	
10.3.7	Main Telecommunications/MDF/IDF Room	150	-	1	150	Near loading dock; room size per CTCFS Figure 17.2.
10.3.8	Custodian Staff Office/Storage Room	140	-	1	140	
10.3.9	JCC Facilities/Service Provider Office	140	2	1	140	Shared office.
10.3.10	Fire Control Room	100	-	1	100	Required per CTCFS Sect. 10.H (p. 10.4).
	10.4 Secure Parking					
10.4.1	Secured Judges Parking	325	-	3	-	Use secure exterior space.
10.4.2	Secured Court Management Staff Parking	325	-	2	-	Use secure exterior space.
10.4.3	Secured Law Enforcement Staff Parking	325	-	-	-	Use exterior sally port.
Total Staff and NSF			2		1,210	
Grossing Factor		25%			303	
Total CGSF					1,513	

Superior Court of California, County of Kern
New East County Courthouse
DRAFT Space Program Detail
September 25, 2025

Space/Component		Unit/Area Std.	No. of Staff	No. of Spaces	NSF	Comments
11.0	Jury Services					Multipurpose Room for Jury Assembly/Other Functions
	11.1 Jury Processing					
11.1.1	Queuing Area	150	-	1	150	
11.1.2	Check-in Counter Station	48	-	2	96	1 station can address hardships.
11.1.3	Copy/Printer/Supply Room/Forms Storage	100	-	1	100	
	11.2 Jury Assembly/Waiting					Total Jury Call: Assumes 120.
11.2.1	General Seating	730	-	1	730	Seats 120
	11.3 Juror Support					
11.3.1	Vending Area	55	-	1	55	
11.3.2	Storage Room	150	-	1	150	For chairs, tables, equipment.
11.3.3	Women's Restroom	160	-	1	160	3 toilets.
11.3.4	Men's Restroom	100	-	1	100	1 toilet and urinals.
11.3.5	Unisex Restroom	60	-	1	60	
	Total Staff and NSF		-		1,601	
	Grossing Factor	25%			399	
	Total CGSF				2,000	

Superior Court of California, County of Orange
New Orange County Collaborative Courthouse
DRAFT Projected Staff and Space Requirements Summary
GSF Reduction per Mar. 12, 2025 CFAC Direction
September 22, 2025

Parking at Grade: Two Levels; Secure Parking & Central Holding's Sallyport at grade directly adjacent to the building. Four Courtrooms on the Second Floor with Chambers/Court Support.

Space Program Summary		CURRENT NEED			
Division / Functional Area		Courtrooms	Total Staff	Total NSF ² Permanent	Total CGSF ³
1.0	Public Area - Lobby, Security Screening	-	3	1,890	2,268
2.0	Court Sets	4	20	10,712	13,926
3.0	Chambers & Courtroom Support	-	5	2,498	3,247
4.0	Court Operations	-	16	2,056	2,776
5.0	District Attorney (Hoteling)	-	5	832	1,082
6.0	Public Defender (Hoteling)	-	5	564	733
7.0	Probation (Hoteling)	-	7	828	1,076
8.0	Community Non-Profits Partner Offices (Hoteling)	-	10	2,160	2,808
9.0	Sheriff	-	1	1,055	1,372
10.0	Central In-Custody Holding (Assumes Secure Exterior Vehicle Sallyport)	-	3	1,295	1,943
11.0	Building Support	-	0	3,396	4,152
12.0	Secure Parking (Site Requirement with Direct Access to Restricted Building Circulation)			N/A	N/A
Subtotal		4	75	27,286	35,382
Building Grossing Factor = 40% of the CGSF ¹					1.40
Total Gross Square Feet (GSF)					49,534
GSF per Courtroom					

Table Footnotes:

1. The Grossing Factor includes space for staff and public restrooms, janitor's closets, electrical closets, mechanical shafts, circulation, etc.
2. NSF = Net Square Feet.
3. CGSF = Component Gross Square Feet.

Superior Court of California, County of Orange
New Orange County Collaborative Courthouse
DRAFT Projected Staff and Space Requirements Summary
GSF Reduction per Mar. 12, 2025 CFAC Direction
September 22, 2025

Parking at Grade: Two Levels; Secure Parking & Central Holding's Sallyport at grade directly adjacent to the building.
Four Courtrooms on the Second Floor with Chambers/Court Support.

Space Program Summary		CURRENT NEED			Level 1	Level 2	Total
Division / Functional Area		Courtrooms	Total Staff	Total CGSF ³	CGSF ³ by Floor		Total CGSF ³
1.0	Public Area - Lobby, Security Screening	-	3	2,268		2,268	2,268
2.0	Court Sets	4	20	13,926		13,926	13,926
3.0	Chambers & Courtroom Support	-	5	3,247		3,247	3,247
4.0	Court Operations	-	16	2,776	2,776		2,776
5.0	District Attorney (DA) Hoteling	-	5	1,082	1,082		1,082
6.0	Public Defender (PD) Hoteling	-	5	733	733		733
7.0	Probation (Hoteling)	-	7	1,076	1,076		1,076
8.0	Community Non-Profits Partner Offices (Hoteling)	-	10	2,808	2,808		2,808
9.0	Sheriff	-	1	1,372	1,372		1,372
10.0	Central In-Custody Holding (Vehicle Sallyport is at grade and adjacent to the building)	-	3	1,943	1,943		1,943
11.0	Building Support	-	0	4,152	4,152		4,152
12.0	Secure Parking (This area is at grade and adjacent to the building)						
Subtotal		4	75	35,382	-	15,941	19,441
Grossing Factor ¹ = 40% of the CGSF							1.40
Total Gross Square Feet (GSF)					-	22,317	27,217
GSF per Courtroom							

Table Footnotes:

1. The Grossing Factor includes space for staff and public restrooms, janitor's closets, electrical closets, mechanical shafts, circulation, etc.
2. NSF = Net Square Feet.
3. CGSF = Component Gross Square Feet.

Superior Court of Orange County

New Orange County Collaborative Courthouse

Space Program Detail

Space / Component	Room Type	Unit / Area Std.	No. of Staff	No. of Spaces	NSF	Comments
1.0 - Public Area - Lobby, Security Screening						
1.1 - Entry Vestibule						
1.1.01 Entry Vestibule	Entry Vestibule	180		1	180	Area for approx. 25 persons - was 250 now reduced to support 15 to 18 persons
1.1.02 Lockers (Public Use/Storage Room - Staff)	Storage Room	100		1	100	Storage for skateboards, wheelchairs, etc.
1.2 - Security Screening Queuing						
1.2.01 Security Screening Queuing	Public Queuing Area	14		25	350	Area for 25 persons
1.3 - Weapons Screening Station						
1.3.01 Weapons Screening Station	Security Screening Station	270	3	1	270	3 OCSD Deputies. Includes staging/line, x-ray machines, magnetometers, retrieval, and secondary screening/recovery area.
1.4 - Secure Public Lobby						
1.4.01 Lobby		14		60	840	Area for 60 persons or 600 NSF -
1.4.02 Information Desk		36			0	Locate in Public Lobby square footage
1.4.03 Public Lactation Room	Lactation Room	50		1	50	Locate in proximity to 1st Floor Public Restrooms
1.4.04 Secured Outdoor Waiting Space	Site Requirement	500		0	0	Locate near public entrance and secure for court users/smokers. External to building/no NSF included in program.
1.5 - Security Staff Storage						
1.5.01 Security Staff Room		100		1	100	For OCSD Deputy use for reports on incidents, etc.
Subtotal			3			
1.0 Public Area - Lobby, Security Screening Total Staff and NSF						
			3		1,890	
Component Grossing Factor			20%		378	
Total CGSF					2,268	

Superior Court of Orange County

New Orange County Collaborative Courthouse

Space Program Detail:

At initial occupancy the Large and three (3) Standard Courtrooms will be built-out.

Space / Component	Room Type	Unit / Area Std.	No. of Staff	No. of Spaces	NSF	Comments
2.0 - Collaborative Court Sets/Courtroom Holding						
2.1 - Court Sets (Refer to the San Diego Central Courthouse Arraignment - Center Bench Courtroom)						
2.1.01 Courtroom Non Jury	Courtroom, Large (Center, U-Shaped Bench)	1,800		1	1,800	In-custody dock for 12; seating for 98. PD File Cabinet. See Arraignment Ctrm. layout (Standards Fig. 22.16), which requires test fit modification.
2.1.02 Courtroom Non Jury	Courtroom, Standard (Center, U-Shaped Bench)	1,600		3	4,800	In-custody dock for 12; seating for 60. PD File Cabinet. See Arraignment Ctrm. layout (Standards Fig. 22.16), which requires test fit modification.
2.1.03 Bailiff and Court Security Officer	Workstation		8	8	0	Located in courtrooms for two bailiff
2.1.04 Courtroom Clerk	Workstation		8	8	0	Located in courtrooms (2 per courtroom)
2.1.05 Court Coordinators	Workstation		4	4	0	Located in courtrooms (1 per courtroom)
2.1.06 Exhibit/Evidence Storage Room	Storage Room	25		4	100	Locate directly accessible from the courtroom
Subtotal			20		6,700	
2.2 - Courtroom Support Spaces						
2.2.01 Entry Vestibule	Courtroom Entry Vestibule	64		4	256	
2.2.02 Attorney/Client Conference Room	Attorney Interview Room	100		8	800	For confidential discussions with out of custody clients
2.2.03 Courtroom Waiting	Courtroom Public Waiting	220		4	880	Non-confidential fixed seating/waiting (Increased from 200 to 220 each for 2023 CTCFS Update)
2.2.04 Courtroom Equipment Room	Storage Room	80		1	80	Storage for child play materials, etc. Co-locate as accessible to all courtrooms
2.2.05 Courtroom A/V Server Closet	Telecommunications Equipment Room	30		4	120	If needed, group A/V servers into one room on floor.
Subtotal Staff and NSF					8,836	

Component Grossing Factor		30%	2651		
Subtotal CGSF		11,487			
2.3 - Courtroom Holding/Attorney Interview		Rated Capacity for 9 per pair of Courtrooms			
2.3.01 Holding Core B—Modified	Holding Core	See <i>Typical Holding Core—6" CMU Walls</i> layout (Standards Fig. T2.21), which requires modification to include all components listed below in conjunction with modified San Diego Arraignment Courtroom Layout (Standards Fig. T2.18).			
<i>In-Custody Dock</i>	Holding Core	160	4	0	In-Custody Dock included in the courtroom layout. Capacity for 12 individuals.
<i>Holding Cells ADA (5 Persons)</i>	Holding Core	85	6	510	Three (3) cells per core; Total rated capacity = 30 (Revised from 55 NSF each per 2023 CTCFS Update now ADA)
<i>Holding Cells (5 Persons)</i>	Holding Core	83	0	0	Included in Holding Cells count above.
<i>Secure Interview Room</i>	Holding Core	42	8	336	Four (4) rooms per core; each courtroom has access to a pair of rooms (Revised from 89 NSF each per 2023 CTCFS Update).
<i>Secure Interview Room Vestibule</i>	Holding Core	50	4	200	To connect each pair of rooms within the holding core; provides access from within the courtroom.
<i>Holding Elevator</i>	Holding Core Elevator	65	2	130	1 per holding core (Revised from 88 NSF per 2023 CTCFS Update)
<i>Holding Vestibule</i>	Holding Core	175	2	350	1 per holding core (Revised per 2023 CTCFS)
<i>Sound Lock Vestibule</i>	Holding Core	175	2	350	1 per holding core (Revised per 2023 CTCFS)
Subtotal Staff and NSF		1,876			
Component Grossing Factor		30%	563		
Subtotal CGSF		2,439			
2.0 Collaborative Court Sets Total Staff and NSF		20	10,712		
Total Departmental CGSF		13,926			

Superior Court of Orange County

New Orange County Collaborative Courthouse

Space Program Detail

Space / Component	Room Type	Unit / Area Std.	No. of Staff	No. of Spaces	NSF	Comments
3.0 - Chambers & Courtroom Support						
3.1 - Judicial Chambers						
3.1.01 Judicial Chambers (Includes restroom, closet)	Judicial Chambers	400	4	4	1,600	
3.1.02 Judicial Assistant	Workstation - Standard	48	1	1	48	
3.1.03 Chambers Waiting	Waiting	100		0	0	
3.1.04 Judicial Conference Room	Large Conference Room (15 people)	375		2	750	3 Rooms -Locate adjacent to chambers; used for Staffing Meetings with Justice Partners; size for 15 persons (Reduced to 2)
Subtotal			5		2,398	
3.2 - Courtroom Support						
3.2.01 Clerk Copy/Supply Workroom	Copy/Workroom/Supply Room	100		1	100	Located on restricted circulation in proximity to the courtrooms
3.2.02 Staff Break Room	Staff Break Area	150		1	150	Locate on 2nd Floor; sized for 6 staff/judges located on 2nd floor; includes Kitchen Area.
3.2.03 Staff Toilet Room	Staff Toilet Room	60			0	Included in GSF Factor - (2) per floor within secure corridor/staff circulation
Subtotal					100	
3.0 Chambers & Courtroom Support Total Staff and NSF			5		2,498	
Component Grossing Factor			30%		749	
Total CGSF					3,247	

Superior Court of Orange County

New Orange County Collaborative Courthouse

Space Program Detail

Space / Component	Room Type	Unit / Area Std.	No. of Staff	No. of Spaces	NSF	Comments
4.0 - Court Operations						
4.1 - Service Counter - (public)						
4.1.01 Waiting area	Public Waiting	60		1	60	Entry space not separate room - Open area
4.2 - Service Counter - (Staff)						
4.2.01 Public Counter	Workstation - unassigned	48		1	48	Case processing area with access to public window, closable to public as needed
4.3 - Operations Staff Offices & Workstations						
4.3.01 Manager	Private Office - Large	200	1	1	200	
4.3.02 Deputy Manager	Private Office - Large	180	1	1	180	
4.0.03 Office	Private Office - Medium	120	1	1	120	Hoteling Office for Zoom Confidential Calls by Coordinators
4.3.04 Senior Admin Analyst	Private Office - Medium	120	1	1	120	
4.3.05 Collaborative Court Coordinator	Large Workstation	64	5	5	320	
4.3.06 Clerk Court III	Large Workstation	64	1	1	64	
4.3.07 Clerk Court II	Standard Workstation	48	2	2	96	
4.3.08 Administrative Assistant II	Standard Workstation	48	0	0	0	Relocated to Chamber & Courtroom Support
4.3.09 Program Coordinator Specialist	Standard Workstation	48	1	1	48	
4.4 - Court Reporters						
4.4.01 Court Reporter	Reporters - Shared Office	200	3	1	200	Room to Support Remote Reporting. Spaces require sound buffer. Locate in advantageous way for alternative/flexible use. Includes three 48 SF Workstations
4.5 - Interpreters						
4.5.01 Interpreter Lounge	Area	160		1	160	Hoteling Space

4.6 - Court Operations (staff support)					
4.6.01 Conference Room	Room	300	1	300	Sized for 15 persons at 20 NSF each
4.6.02 Supply Copy Storage Room	Room	120	1	120	
4.6.03 Coffee Counter	Area	20	1	20	Provide sink, counter
4.0 Court Operations Total Staff and NSF		16		2,056	
Component Grossing Factor		35%		720	
Total CGSF				2,776	

DRAFT

Superior Court of Orange County

New Orange County Collaborative Courthouse

Space Program Detail

Space / Component	Room Type	Unit / Area Std.	No. of Staff	No. of Spaces	NSF	Comments
5.0 - District Attorney					All spaces are Hoteling	
5.1 - Service Counter - District Attorney (public)						
5.1.01 Waiting area	Public Queuing Area	60		1	60	Entry space not separate room - Open area
5.2 - Service Counter - (Staff side in Restricted Circulation)						
5.2.01 Standing Counter	Area	20		1	20	
5.3 - District Attorney (Staff Areas)						
5.3.01 Deputy District Attorney	Private Office - Medium	140	1	1	140	Reduced from 2 to 1 office
5.3.02 Administrative Staff Workstations	Workstation - Standard	48	4	4	192	
5.3.03 Intern Workstations	Workstation - Standard	48			0	Locate 1 workstation near Standing Service Counter - Reduced from 2 to no Intern Wks
5.4 - Shared Staff Support Areas (District Attorney & Public Defender need proximity and staff circulation access to these spaces.)						
5.4.01 File Storage Room	Room	100		1	100	
5.4.02 Copy/Printer/Supply (staff support)	Copy/Workroom/Supply Area	100		1	100	Includes Bulk Form Storage (Shared with Public Defender staff)
5.4.03 Coffee Counter	Area	20		1	20	Provide sink, counter (Shared with Public Defender staff)
5.4.04 Conference Room	Room	200		1	200	Shared with Public Defender staff
5.0 District Attorney Total Staff and NSF			5		832	
Component Grossing Factor			30%		250	
Total CGSF					1,082	

Superior Court of Orange County

New Orange County Collaborative Courthouse

Space Program Detail

Space / Component	Room Type	Unit / Area Std.	No. of Staff	No. of Spaces	NSF	Comments
6.0 - Public Defender					All spaces are Hoteling	
6.1 - Service Counter - Public Defender (public)						
6.1.01 Waiting area	Public Queuing Area	4		15	60	Entry, space not separate room - Open area; Reduced from 6 to 4 persons
Subtotal					60	
6.2 - Service Counter - (staff)						
6.2.01 Standing Counter	Area	20		1	20	
Subtotal					20	
6.3 - Public Defender (Staff Areas)						
6.3.01 Deputy Public Defender	Private Office - Medium	140	1	1	140	Reduced from 2 to 1 office
6.3.02 Investigator Office	Private Office - Medium	100	1	1	100	
6.3.03 Paralegal Workstations	Workstation - Standard	48	2	2	96	
6.3.04 Administrative Workstations	Workstation - Standard	48	1	1	48	Reduced by 1 Workstation
6.3.05 Intern Workstations	Workstation - Standard	48			0	Locate 1 workstation near Standing Service Counter - Reduced from 2 to no Intern Wks
Subtotal			5		384	
6.4 - Public Defender (staff support)						
6.4.01 Secure File Storage Room	Room	100		1	100	
6.4.02 Copy/Printer/Supply (staff support)	Copy/Workroom/Supply Area	100		0	0	Includes Bulk Form Storage (See District Attorney's Office for shared space)
6.4.03 Coffee Counter	Area	20		0	0	See District Attorney Office for shared space
6.4.04 Conference Room	Room	200		0	0	See District Attorney' Office for shared space
Subtotal		885			100	
6.0 Public Defender Total Staff and NSF			5		564	
Component Grossing Factor			30%		169	
Total CGSF					733	

Superior Court of Orange County

New Orange County Collaborative Courthouse

Space Program Detail

Space / Component	Room Type	Unit / Area Std.	No. of Staff	No. of Spaces	NSF	Comments
7.0 - Department of Probation					All spaces are Hoteling	
7.1 - Service Counter - Probation (public)						
7.1.01 Waiting area	Public Queuing Area	12		8	96	Entry, space not separate room - Open area: Reduced from 15 to 8 persons
7.2 - Service Counter - (staff)						
7.2.1 Standing Counter	Area	20		1	20	
7.3 - Probation (Staff Areas)						
7.3.01 Probation Officer Offices	Private Office - Medium	140	3	3	420	Reduced from 12 to 3 and increased square footage by 20 to 140 NSF
7.3.02 Probation Clerk Workstations	Workstation - Standard	48	4	4	192	Locate 1 workstation near Standing Service Counter
7.4 - Staff Support - Probation & Community Non-profits will share Copy, Coffee Counter & Conference Room spaces (See 8.8 Areas)						
7.4.01 File Storage Room	Room	100		1	100	
7.4.02 Copy/Printer/Supply (staff support)	Copy/Workroom/Supply Area	100		0	0	See Sect. 8.8 Community Non-Profits for shared space.
7.4.03 Coffee Counter	Area	20		0	0	See Sect. 8.8 Community Non-Profits for shared space.
7.4.04 Conference Room	Room	300		0	0	See Sect. 8.8 Community Non-Profits for shared space.
7.0 Probation Total Staff and NSF				7	828	
Component Grossing Factor				30%	248	
Total CGSF					1,076	

Superior Court of Orange County

New Orange County Collaborative Courthouse

Space Program Detail

Space / Component	Room Type	Unit / Area Std.	No. of Staff	No. of Spaces	NSF	Comments
8.0 - Community Non-Profit Services					All spaces are Hoteling	
8.1 - Service Counter - Non-profits (Public)						
8.1.02 Public Waiting	Waiting	150		2	300	2 areas for 25 persons ea. One area designated Mental Health waiting. Reduced to 2 areas for 15 persons each
8.1.03 Public Computer Carrels	Waiting	25		2	50	With printers for VA clients, etc.
8.2 - Service Counter - (staff)						
8.2.01 Standing Counter	Area	20		1	20	
8.3 to 8.7 Non-Profit Services (Veteran Services, Social Services, Heath Care & Behavior Health Services, Other Services)						
8.3 - Veteran Services Office - Staff						
8.3.01 Veteran Services Offices	Private Office	140	2	2	280	
8.4 - Social Service Agency - Staff						
8.4.01 Social Service Office	Private Office	140	1	1	140	
8.5 - Health Care Agency- Staff & Direct Support Spaces						
8.5.01 Health Care Staff Office	Private Office	140	1	1	140	Reduced from 2 to 1 offices
8.5.02 Support Staff Workstations	Workstation - Standard	48	3	3	144	
8.5.03 File Storage Room	Storage Room	100		1	100	
8.6 - Behavior Health Services Staff						
8.6.01 Behavior Health Staff Office	Private Office	140	1	1	140	
8.7 - Other Services Staff						
8.7.01 Staff Office	Private Office	140	2	2	280	Reduced from 3 to 2 offices
8.8 - Shared Staff Support Areas with Probation (Community Non-Profits & Probation need proximity and staff circulation access to these spaces.)						
8.8.01 File Room		150		1	150	Storage for All Non-profits Services

8.8.02 Copy/Work Room		120	1	120	Copy/Work Room for All Non-profits Services
8.8.03 Medical Examination Room	Room	100	2	200	For medical needs
8.8.04 Urine Sample Toilet Room	Room	75	1	75	Drug testing location.
8.8.05 Conference Room	Room	200	1	1	Sized to seat 8 persons
8.8.06 Coffee Counter		20	1	20	Need Hot/Cold Water Plumbing, sink & Electrical at this location
8.0 Community Non-Profit Services Total Staff and NSF		10		2,160	
Component Grossing Factor		30%		648	
Total CGSF				2,808	

Superior Court of Orange County

New Orange County Collaborative Courthouse

Space Program Detail

Space / Component	Room Type	Unit / Area Std.	No. of Staff	No. of Spaces	NSF	Comments
9.0 - Sheriff						
9.1 - Staff (Sheriff Supervisor, 6 Bailiffs & Holding Assigned Staff)						Locate in proximity to the building entrance
9.1.01 Management Office (Lieut., Sergeant)	Private Office - Medium	100	1	1	100	
9.1.02 Deputy Work Area	Carrel Workstations	25		0	0	Provide in Ready Room - 3 Work Carrels in this space at 25 NSF each.
9.1.03 Copy/Supply Alcove	Copy/Workroom/Supply Area	80		1	80	Combine with Deputy Work Area - Include Counter for Deputy radio charging stations.
9.2 - Staff Support						
9.2.01 Security Equipment Closet	Security Equipment Closet	80		1	80	
9.2.02 Staff Toilet Room		60		2	120	
9.2.03 Men's Locker/Shower/Toilet Room		300		1	300	
9.2.04 Women's Locker/Shower/Toilet Room		150		1	150	
9.2.05 Ready/Break Room		225		1	225	Room is intended for briefings, breaks plus 3 hoteling work carrels at 25 square feet each.
Subtotal					1,055	
9.0 Sheriff Total Staff and NSF			1		1,055	
Component Grossing Factor			30%		317	
Total CGSF					1,372	

Superior Court of Orange County

New Orange County Collaborative Courthouse

Space Program Detail

Space / Component	Room Type	Unit / Area Std.	No. of Staff	No. of Spaces	NSF	Comments
10.0 - Central In-Custody Holding						
10.1 - Holding Intake						
Site Requirement						
10.1.01 Secured Van Stall Waiting/Parking	Sally Port - Vans			1		Located at grade to accommodate Passenger Vans and possibly the OCSD's bus plus 2 patrol vehicles; morning and afternoon transports
10.1.02 Vehicular Sallyport Loading Staging area						
Interior Space Requirements						
10.A15:J35+A15:J342.01 Pedestrian	Pedestrian Sally Port	80		1	80	
10.2.02 Detainee Staging		100		1	0	NSF in circulation.
10.2.03 Remand Booking Station		80		1	0	NSF in circulation.
10.2.04 Remand Holding Cell	Individual Holding	50		1	50	Total Rated Capacity: 2 - was 70
Subtotal					130	
10.3 - Central Holding, Adult						
				Total Cells: 9	ADT 42/Total Rated Capacity 47	
10.3.01 Large Holding Cell - Male	Large Holding	110		3	330	Total Rated Capacity: 24
10.3.02 Large Holding Cell - Female	ADA Holding	85		1	85	Total Rated Capacity: 5
10.3.03 Small Holding Cell - Male	Small Holding	70		3	210	Total Rated Capacity: 12
10.3.04 Small Holding Cell - Female	Small Holding	70		1	70	Total Rated Capacity: 4
10.3.05 Individual Holding - Male	Individual Holding - HC	50		1	50	Total Rated Capacity: 2
10.3.06 Individual Holding - Female	Individual Holding - HC	50		0	0	Total Rated Capacity: 0
Subtotal					745	
10.4 - Central Holding, Juvenile (with sight/sound separation)						
				Total Cells: 0	No In-Custody Juvenile transportation to this facility.	
10.4.01 Small Holding Cell - Male	Small Holding	70		0	0	No In-Custody Juveniles in Program
10.4.02 Small Holding Cell - Female	Small Holding	70		0	0	No In-Custody Juveniles in Program
10.4.03 Individual Holding	Individual Holding	50		0	0	No In-Custody Juveniles in Program
Subtotal					0	
10.5 - Attorney Visitation Areas						
				Not Required - All Attorney Client Interviews to be Held Adjacent to Courtrooms.		
10.5.01 Attorney Vestibule/Waiting		80		0	0	

10.5.02 Attorney-Client Interview Room	Attorney Interview Booth	80	0	0	
Subtotal				0	
10.6 - Holding Support					
10.6.01 Building Security/Detention Control Room		200	2	1	200 Combined for building security and in-custody holding areas
10.6.02 Storage Room	Storage Rooms	60		1	60
10.6.03 Medical Exam Evaluation		100		1	100
10.6.04 Staff Restroom	Staff Toilet Room	60		1	60
10.6.05 Janitor Closet	Janitor Closet	40		1	0 NSF in circulation..
10.6.06 Food Storage - In-custodies		20		1	0 NSF in circulation.
Subtotal				420	
10.0 Central In-Custody Holding Total Staff and NSF					
		3			1,295
Component Grossing Factor		50%			648
Total CGSF				1,943	

Superior Court of Orange County

New Orange County Collaborative Courthouse

Space Program Detail

Space / Component	Room Type	Unit / Area Std.	No. of Staff	No. of Spaces	NSF	Comments
11.0 - Building Support						
11.1- Children's Waiting Room (Children's Chamber)						Childcare provider is Catalyst Family, Inc.; locate adjacent to Public Lobby
11.1.01 Secure Check-in Station	Reception/Sign-In	60		1	60	
11.1.02 Child Care Staff Station	Workstation	48	1	1	48	Catalyst Staff
11.1.03 Play Area	Child Waiting	400		1	400	Area for Reading, provide a TV & Computer
11.1.04 Supply/Toy Storage		30		1	30	
11.1.05 Restroom		64		1	64	
11.1.06 Kitchenette		24		1	24	
Subtotal Staff and Net Area			1		626	
Grossing Factor		15%			94	
Total Children's Chamber Departmental Gross Square					720	
11.2 - Staff Support						
11.2.01 Conference/Training Room	Large Conference Room	300		0	0	One room For Justice Partner/Community Partner use. Eliminated as Justice Partners can schedule training in an empty courtroom or 1 of the court set conference rooms
11.2.02 Staff Break Room	Staff Break Area	400		1	400	Centrally locate on 1st floor; sized for 16; includes Kitchen Area.
11.2.03 Staff Lactation Room	Lactation Room	50		1	50	Locate on Staff Restricted Circulation
11.2.04 Staff Shower/Restroom	Staff Toilet with Shower	80		2	160	
Subtotal Staff and Net Area			1,130	6	610	
Grossing Factor		20%			122	
Total Staff Support Departmental Gross Square Feet					732	
11.3 - Public Area Support						
11.3.01 Vending Machine Area		100		1	0	NSF in circulation.
Grossing Factor		20%			0	

Total Public Area Departmental Gross Square Feet				0	
11.4 - Building Operations					
11.4.01 Loading/Receiving Area		100	1	100	
11.4.02 Trash/Recycling Collection Area		80	1	80	
11.4.03 Mailroom	Mailroom	80	1	80	Location in building to be confirmed by court
11.4.04 General Building Storage (Court)		250	1	250	
11.4.05 IDF Rooms	Telecommunications Room	140	2	280	See CTCFS - 17.3 Maybe 140 NSF
11.4.06 Central Computer Room		120	1	120	
11.4.07 IT Work Room		100	1	100	Locate adjacent to Central Computer Room
11.4.08 IT Storage Room		100	1	100	Provide direct access to the IT Work Room
11.4.09 Main Telecommunications/MDF Room	Telecommunications Equipment Room	200	1	200	
11.4.10 Main Electrical Room	Electrical Room	150	1	150	
11.4.11 UPS Room		100	1	100	Required per 2020 CTCFS
11.4.12 Elevator Equipment Rooms		100	5	0	Added per CTCFS 2020 Update - Deviation from CTCFS to be absorbed in the 40% building grossing factor
11.4.13 Fire Control Room		100	1	100	Required per CTCFS 10.H Locate adjacent to Main Building Entry
11.4.14 Custodian Staff Area		100	1	100	Contracted Vendor
11.4.15 Housekeeping Storage		150	1	150	
11.4.16 Housekeeping Closet		40	2	0	Added - Deviation from CTCFS to be absorbed in the 40% building grossing factor
11.4.17 JCC Facilities/Service Provider Office		100	1	100	
11.4.18 Building Maintenance Storage		150	1	150	
Subtotal Staff and Net Area			0	2,160	
Grossing Factor		25%		540	
Total Building Operations Departmental Gross Square Feet				2,700	
Total Net Area Square Feet				3,396	
11.0 Building Support Total Gross Square Feet				4,152	

Superior Court of Orange County

New Orange County Collaborative Courthouse

Space Program Detail

Space / Component	Room Type	Unit / Area Std.	No. of Staff	No. of Spaces	NSF	Comments
12.0 - Parking - Per Space Square Footage Assumes at grade parking see CTCFS 3.2 b & c						
Site Requirement						
12.4 - Secure Parking (Secure - On the exterior with direct access to restricted building circulation)						
12.4.1 Secured Judges Parking		420		4	1,680	Space increased from 3 to 4
12.4.2 Secured Court Management Staff Parking		420		3	1,260	Space reduced from 6 to 3
12.4.3 Secured Law Enforcement Staff Parking		420		0	0	Space reduced from 6 to 0
Subtotal Parking Spaces and Net Area				7	N/A	
Division Grossing Factor		25%			N/A	
12.0 Parking Area Total Gross Square Feet					N/A	

Court Facilities Advisory Committee

As of September 15, 2025

Hon. Brad R. Hill, Chair

Administrative Presiding Justice of the
Court of Appeal, Fifth Appellate District

Hon. Eric J. Wersching, Vice-Chair

Judge of the Superior Court of California,
County of Orange

Hon. JoAnn M. Bicego

Judge of the Superior Court of California,
County of Siskiyou

Hon. Donald Cole Byrd

Presiding Judge of the
Superior Court of California,
County of Glenn

Mr. Anthony P. Capozzi

Attorney at Law

Ms. Melissa Fowler-Bradley

Former Court Executive Officer
Superior Court of California,
County of Shasta

Hon. William F. Highberger

Judge of the Superior Court of California,
County of Los Angeles

Hon. Harry E. Hull, Jr.

Associate Justice of the Court of Appeal
Third Appellate District

Hon. Steven E. Jahr (Ret.)

Judge of the Superior Court of California,
County of Shasta

Hon. Patricia L. Kelly

Presiding Judge of the
Superior Court of California,
County of Santa Barbara

Ms. Krista LeVier

Court Executive Officer
Superior Court of California,
County of Lake

Hon. Elaine Lu

Judge of the Superior Court of California,
County of Los Angeles

Ms. Kyria Martinez

County Administrative Officer,
County of Kings

Hon. Gary R. Orozco

Judge of the Superior Court of California,
County of Fresno

Hon. David Edwin Power (Ret.)

Judge of the Superior Court of California,
County of Solano

Hon. Lisa M. Rogan

Presiding Judge of the
Superior Court of California,
County of San Bernardino

Hon. Sergio C. Tapia II

Presiding Judge of the
Superior Court of California,
County of Los Angeles

Mr. Thomas J. Warwick, Jr.

Attorney at Law

Court Facilities Advisory Committee

As of September 15, 2025

SUBCOMMITTEES

Courthouse Cost Reduction Subcommittee

Hon. Steven E. Jahr (Ret.), Chair
Hon. Donald Cole Byrd
Ms. Melissa Fowler-Bradley
Hon. William F. Highberger
Hon. Gary R. Orozco
Mr. Thomas J. Warwick, Jr.
Hon. Eric J. Wersching

Independent Outside Oversight Consultant Subcommittee

Vacant, Chair
Hon. Gary R. Orozco
Hon. David Edwin Power (Ret.)
Mr. Thomas J. Warwick, Jr.

Subcommittee on Courthouse Names

Vacant, Chair
Hon. Donald Cole Byrd
Mr. Anthony P. Capozzi
Hon. Gary R. Orozco
Hon. David Edwin Power (Ret.)
Mr. Thomas J. Warwick, Jr.