

# ALTA/ACSM LAND TITLE SURVEY WHITTIER PARKING STRUCTURE

PORTIONS OF LOTS 3 AND 4, BLOCK J,  
JOHN M. THOMAS RANCH, 21 MR 53  
CITY OF WHITTIER, COUNTY OF LOS ANGELES  
STATE OF CALIFORNIA  
SHEET 2 OF 2 SHEET

## MONUMENT LEGEND

○ INDICATES SET NAIL AND TAG "LS 5134" IN PAVEMENT.

● INDICATES FOUND MONUMENT AS DESCRIBED BELOW.

1101 FOUND MAG NAIL AND WASHER STAMPED "LS 7707" FLUSH IN ASPHALT. ACCEPTED AS THE CENTERLINE INTERSECTION OF PAINTER AVE. AND PENN ST. SEE SPIKE AND WASHER FOUND PER PWFB 1027, PAGE 476.

1102 FOUND MAG NAIL AND WASHER STAMPED "LS 7707" FLUSH IN ASPHALT. ACCEPTED AS THE CENTERLINE INTERSECTION OF PAINTER AVE. AND WALNUT AVE. SEE SPIKE FOUND PER PWFB 1027, PAGE 535.

1103 CENTERLINE INTERSECTION OF WASHINGTON AVE. AND WALNUT ST. ESTABLISHED FROM TIES FOUND PER LA COUNTY FB 1583, PAGE 36. SEE LEAD AND TACK PER ROS BOOK 119, PAGE 87.

1104 FOUND PUNCHED SPIKE. ACCEPTED AS THE CENTERLINE INTERSECTION OF WASHINGTON ST. AND PENN ST. FITS THE REMAINING TIE TO THE NW PER COUNTY OF LA TIE SHEET W.S. 37, B-5 FB 1583, PAGE 32, AND FITS RECORD DISTANCES TO 1101 AND 1109 PER (R1) LA COUNTY SURVEYORS MAP NO. B-2357. SEE SPIKE NOTED AS 0.04 NLY OF INTERSECTION PER COUNTY OF LA TIE SHEET W.S. 37, B-5 FB 1583, PAGE 32.

1109 FOUND PUNCHED SPIKE. ACCEPTED AS THE CENTERLINE INTERSECTION OF WASHINGTON ST. AND MAR VISTA ST. FITS RECORD DISTANCES AND LINE BETWEEN 1104 AND 1103 PER LA COUNTY SURVEYORS MAP NO. B-2357. SEE SPIKE NOTED AS 0.07 ELY OF INTERSECTION PER COUNTY OF LA TIE SHEET W.S. 37, B-5 FB 1583, PAGE 32.

1117 FOUND LEAD PLUG AND BRASS TACK FLUSH IN ASPHALT. NO PUBLIC RECORD FOUND. ACCEPTED AS POINT ON THE CENTERLINE OF PAINTER AVE 10.00' NORTH OF THE CENTERLINE OF MAR VISTA ST.

1119 FOUND LEAD PLUG AND BRASS TACK FLUSH IN ASPHALT. ACCEPTED AS THE CENTERLINE INTERSECTION OF PAINTER AVE. AND MAR VISTA ST. SEE SPIKE PER (R1) LA COUNTY SURVEYORS MAP NO. B-2357 AND COUNTY OF LA TIE SHEET W.S. 37, C-6, FB 1583, PAGE 82.

NOTE:  
CENTERLINE OF MAR VISTA ST. ESTABLISHED BY PROPORTION OF THE RECORD ANGLES AND DISTANCES BETWEEN POINTS 1109 AND 1119 PER (R1) LA COUNTY SURVEYORS MAP NO. B-2357. SEARCHED FOR CENTERLINE MONUMENTS PER COUNTY OF LA TIE SHEET W.S. 37, C-6, FB 1583, PAGES 82 AND 83, NOTHING FOUND.

## SYMBOL LEGEND

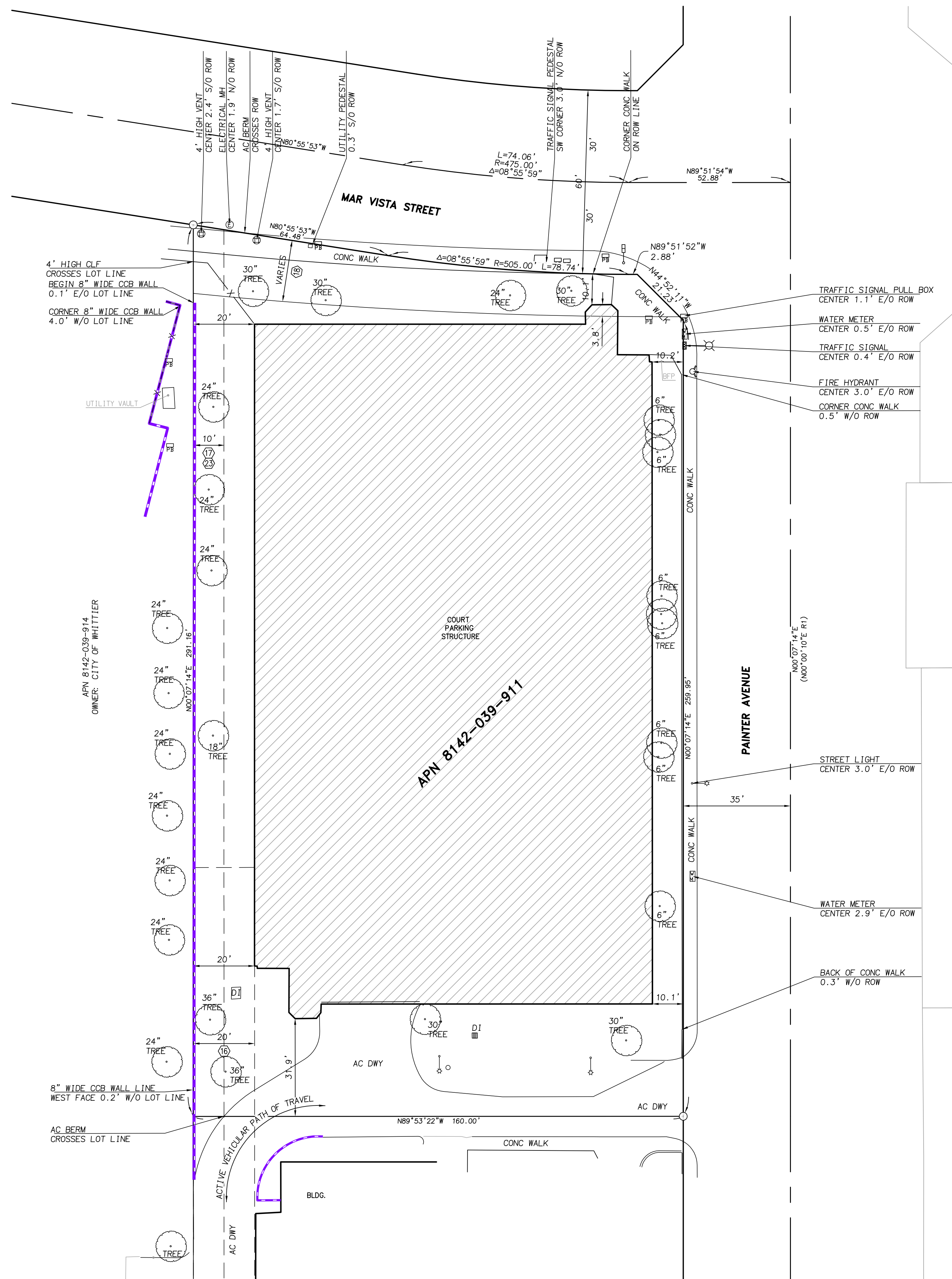
WATER METER	VENT
TRAFFIC SIGNAL/STREET LIGHT	TRAFFIC SIGNAL
DROP INLET	PULLBOX
STREET LIGHT	SEWER CLEANOUT
TREE	FIRE HYDRANT
ELECTRIC MANHOLE	

## REFERENCE LEGEND

R1 INDICATES LA COUNTY SURVEYORS MAP NO. B-2357, SURVEYED FEBRUARY 1954 IN COUNTY OF LA FB1583, PAGES 75-80

## ABBREVIATION LEGEND

AC	ASPHALTIC CONCRETE
BLDG	BUILDING
CCB	CONCRETE BLOCK
CF	CALCULATED FROM
CONC	CONCRETE
COR	CORNER
DIA	DIAMETER
DWY	DRIVEWAY
FD	FOUND
ICV	IRRIGATION CONTROL VALVE
IP	IRON PIPE
M	MEASURED
NE	NORTHEAST
NFNS	NOTHING FOUND, NOTHING SET
NW	NORTHWEST
ROW	RIGHT-OF-WAY
SE	SOUTHEAST
SW	SOUTHWEST
VCSM	VENTURA COUNTY STANDARD MONUMENT
N/O	NORTH OF
S/O	SOUTH OF
E/O	EAST OF
W/O	WEST OF



## EASEMENT LEGEND

- ① INDICATES EASEMENT PER TITLE REPORT ITEM
- ② AN EASEMENT TO THE CITY OF WHITTIER FOR PUBLIC UTILITIES PURPOSES AND RIGHTS INCIDENTAL THERETO AS SET FORTH IN A DOCUMENT RECORDED DECEMBER 13, 1957 AS INSTRUMENT NO. 2660 AND RE-RECORDED FEBRUARY 5, 1970 AS INSTRUMENT NO. 2187 BOTH OF OFFICIAL RECORDS. (NO REPRESENTATION IS MADE AS TO THE PRESENT OWNERSHIP OF SAID EASEMENT)
- ③ AN EASEMENT TO THE CITY OF WHITTIER FOR PUBLIC UTILITIES PURPOSES AND RIGHTS INCIDENTAL THERETO AS SET FORTH IN A DOCUMENT RECORDED MAY 9, 1957 AS INSTRUMENT NO. 4043 OF OFFICIAL RECORDS
- ④ AN EASEMENT TO SOUTHERN CALIFORNIA EDISON COMPANY, A CORPORATION FOR POLE LINES, CONDUITS AND INCIDENTAL PURPOSES AND RIGHTS INCIDENTAL THERETO AS SET FORTH IN A DOCUMENT RECORDED JANUARY 7, 1960 AS INSTRUMENT NO. 3030 OF OFFICIAL RECORDS. (NO REPRESENTATION IS MADE AS TO THE PRESENT OWNERSHIP OF SAID EASEMENT)
- ⑤ AN EASEMENT TO THE CITY OF WHITTIER FOR PUBLIC ROAD AND HIGHWAY PURPOSES AND RIGHTS INCIDENTAL THERETO AS SET FORTH IN A DOCUMENT RECORDED DECEMBER 17, 1973 AS INSTRUMENT NO. 2398 OF OFFICIAL RECORDS. (NO REPRESENTATION IS MADE AS TO THE PRESENT OWNERSHIP OF SAID EASEMENT)
- ⑥ RIGHT OF WAY FOR STORM WATERS, AS RECITED IN THE DECREE ENTERED IN SUPERIOR COURT CASE NO. LR288.
- ⑦ AN EASEMENT TO SOUTHERN CALIFORNIA EDISON COMPANY, A CORPORATION FOR PUBLIC UTILITIES PURPOSES SHOWN BELOW AND RIGHTS INCIDENTAL THERETO AS SET FORTH IN A DOCUMENT RECORDED JANUARY 7, 1960 AS INSTRUMENT NO. 3030 OF OFFICIAL RECORDS. (NO REPRESENTATION IS MADE AS TO THE PRESENT OWNERSHIP OF SAID EASEMENT)

NOTE: SEE SHEET ONE FOR BOUNDARY CONTROL AND OTHER NOTES.